



Cook, Flatt & Strobel
ENGINEERS, P.A.

CFS PROJECT NO:
10-5048

E. HARRY ST. & WOODLAWN ST. INTERSECTION

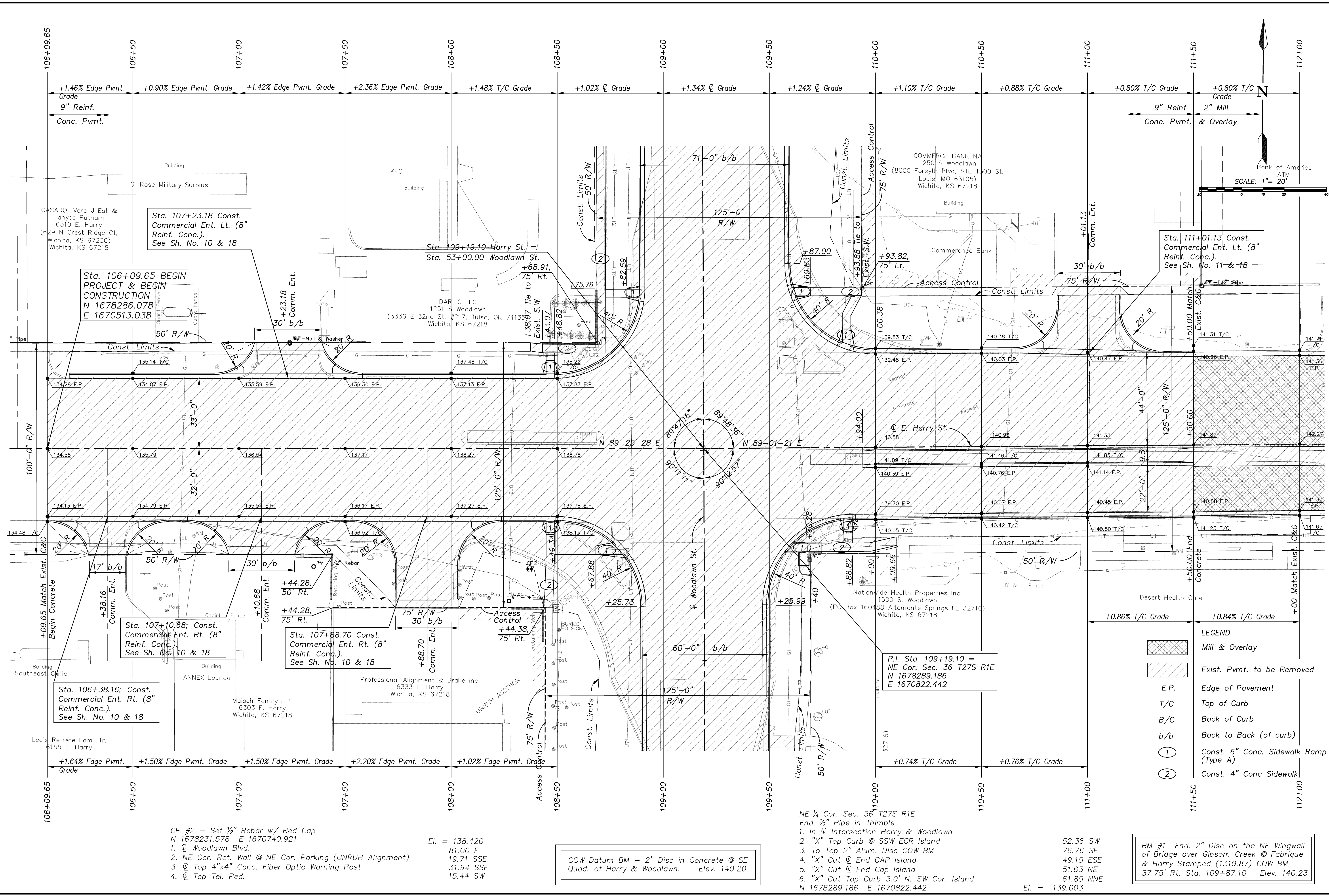
DESIGNED BY: KKH DRAWN BY: BMG CHECKED BY: KWB

SHEET TITLE:
SITE PLAN

PROJECT NUMBER:
87N-0494-01

FINAL
PLANS

SHEET NUMBER:
6 of 69



CP #2 - Set 1/2" Rebar w/ Red Cap
N 1678231.578 E 1670740.921

1. ☉ Woodlawn Blvd.
2. NE Cor. Ret. Wall @ NE Cor. Parking (UNRUH Alignment)
3. ☉ Top 4"x4" Conc. Fiber Optic Warning Post
4. ☉ Top Tel. Ped.

El. = 138.420
81.00 E
19.71 SSE
31.94 SSE
15.44 SW

COW Datum BM - 2" Disc in Concrete @ SE
Quad. of Harry & Woodlawn. Elev. 140.20

NE 1/4 Cor. Sec. 36 T27S R1E
Fnd. 1/2" Pipe in Thimble

1. In ☉ Intersection Harry & Woodlawn
2. "X" Top Curb @ SSW ECR Island
3. To Top 2" Alum. Disc COW BM
4. "X" Cut ☉ End CAP Island
5. "X" Cut ☉ End Cap Island
6. "X" Cut Top Curb 3.0' N. SW Cor. Island
N 1678289.186 E 1670822.442

52.36 SW
76.76 SE
49.15 ESE
51.63 NE
61.85 NNE
El. = 139.003

BM #1 Fnd. 2" Disc on the NE Wingwall
of Bridge over Gipsom Creek @ Fabrique
& Harry Stamped (1319.87) COW BM
37.75' Rt. Sta. 109+87.10 Elev. 140.23