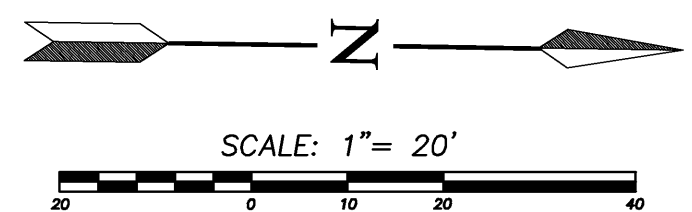
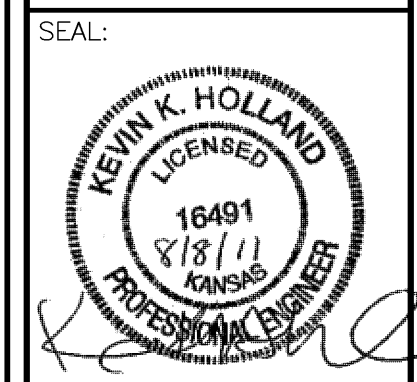


E¼ Cor. Sec. 36 T27S R1E
 Fnd. ½" Pipe in 0.3' Deep
 1. In ½" N-S Asphalt Rd. (Woodlawn)
 2. ½" Asphalt Rd. to W. (Mt. Vernon)
 3. "±" Top W. Face Curb
 4. 3 Nails in Power Pole

E¼ Cor. Sec. 36 T27S R1E (cont.)
 5. "±" Cut Top Curb 33.05 NE
 6. "±" Cut Top Curb 49.67 SW
 7. "±" Cut Top Curb 44.10 NW
 N 1675640.484 E 1670857.661 El. = 137.426



REVISED
 Added Ex. Water Line



Cook, Flatt & Strobel
 ENGINEERS, P.A.

CFS PROJECT NO:
 10-5048

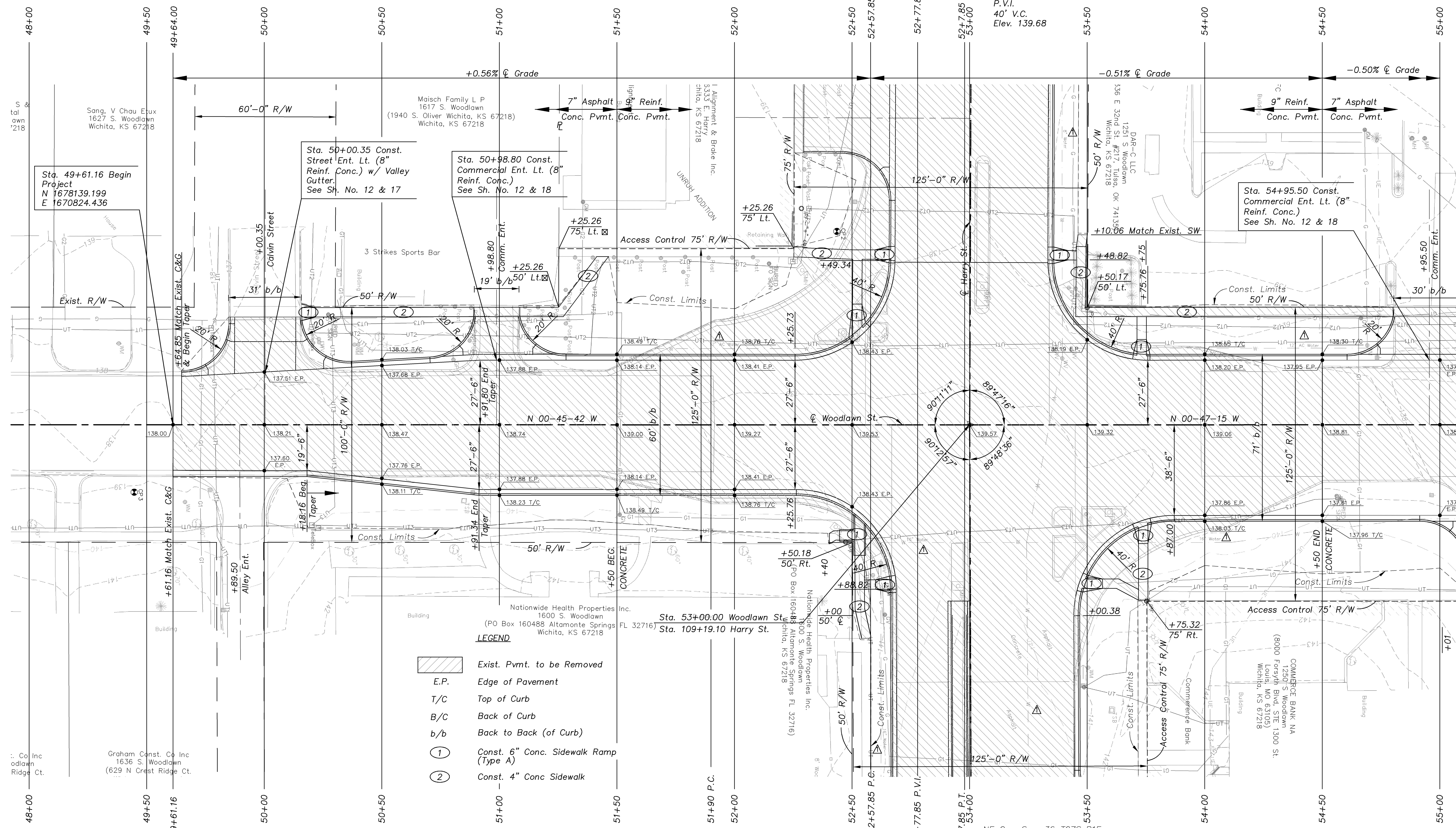
CITY OF WICHITA, KANSAS
**E. HARRY ST. & WOODLAWN ST.
 INTERSECTION**
 DESIGNED BY: KKH DRAWN BY: BMG CHECKED BY: KWB

SHEET TITLE:
SITE PLAN

PROJECT NUMBER
 87N-0494-01

**FINAL
 PLANS**

SHEET NUMBER:
8 of 69



BM #4 "±" Cut Top Curb @ SW Cor. Sidewalk
 @ the NE Quad. of Woodlawn & Osie
 43.63' Rt. Sta. 45+23.88 Elev. 138.79

CP #3 - Set ½" Rebar w/ Red Cap
 N 1677934.26 E 1670855.83 El. = 139.26
 1. ½" Woodlawn Blvd. 29.50 W
 2. ½" Calvin St. to W. 55.60 N
 3. ½" Conc. Drove between Apt. 1630
 & 1636 Woodlawn 28.00 S
 4. WSW Cor Apt. Bldg. #1630 30.91 ENE

CP #2 - Set ½" Rebar w/ Red Cap
 N 1678231.58 E 1670740.92 El. = 138.42
 1. ½" Woodlawn Blvd. 81.00 E
 2. NE Cor. Ret. Wall @ NE Cor. Parking
 (Unruh Alignment) 19.71 SSE
 3. ½" Top 4"x4" Conc. Fiber Optic
 Warning Post 31.94 SSE
 4. ½" Top Tel. Ped. 15.44 SW

NE Cor. Sec. 36 T27S R1E
 Fnd. ½" Pipe in Thimble
 1. In ½" Intersection Harry & Woodlawn
 2. "X" Top Curb @ SSW ECR Island
 3. To Top 2" Alum. Disc. COW BM
 4. "X" Cut @ End Cap Island
 5. "X" Cut @ End Cap Island
 6. "X" Cut Top Curb 3.0' N SW Cor. Island
 N 1678289.186 E 1670822.442 El. = 139.003

- LEGEND**
- Exist. Pvmt. to be Removed
 - Edge of Pavement
 - Top of Curb
 - Back of Curb
 - Back to Back (of Curb)
 - Const. 6" Conc. Sidewalk Ramp (Type A)
 - Const. 4" Conc Sidewalk

J:\2010\10\10\WOODLAWN ST. PLAN SHEET.dwg, WOODLAWN1, 10/24/2011 8:28:08 AM