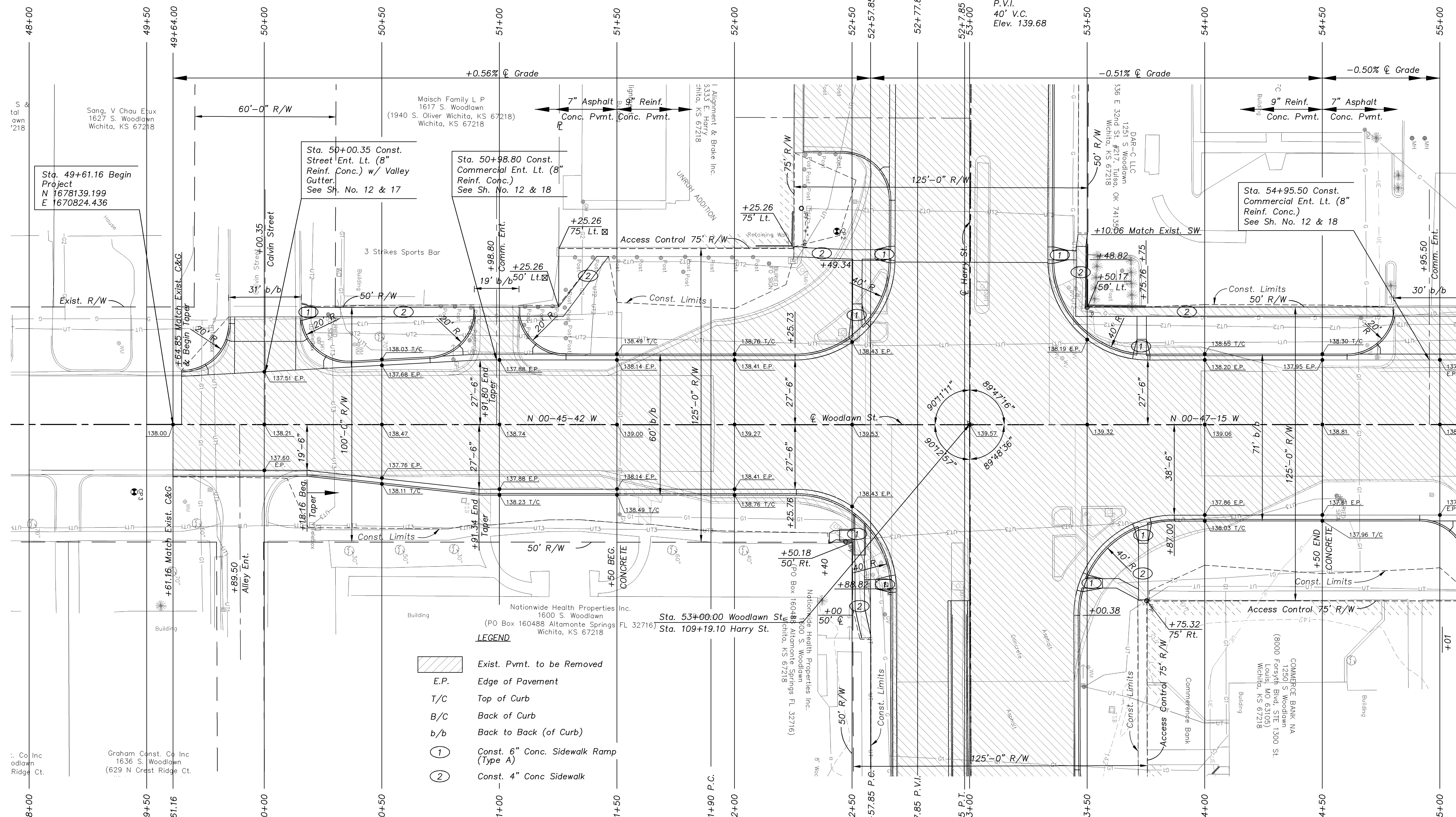
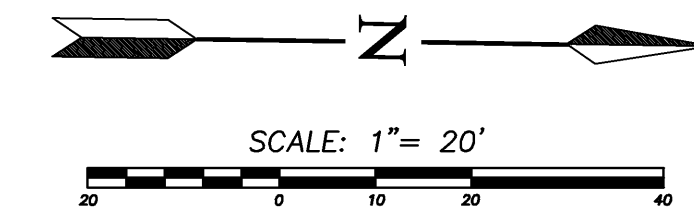


E1/4 Cor. Sec. 36 T27S R1E  
 Fnd. 1/2" Pipe in 0.3' Deep  
 1. In  $\phi$  N-S Asphalt Rd. (Woodlawn)  
 2.  $\phi$  Asphalt Rd. to W. (Mt. Vernon)  
 3. "+" Top W. Face Curb  
 4. 3 Nails in Power Pole

E1/4 Cor. Sec. 36 T27S R1E (cont.)  
 5. "+" Cut Top Curb 33.05 NE  
 6. "+" Cut Top Curb  $\phi$  Curb Radius SW Quad 49.67 SW  
 7. "+" Cut Top Curb  $\phi$  Curb Radius NW Quad 44.10 NW  
 N 1675640.484 E 1670857.661 El. = 137.426

P.V.I.  
 40' V.C.  
 Elev. 139.68



- LEGEND**
- Exist. Pvmt. to be Removed
  - E.P. Edge of Pavement
  - T/C Top of Curb
  - B/C Back of Curb
  - b/b Back to Back (of Curb)
  - ① Const. 6" Conc. Sidewalk Ramp (Type A)
  - ② Const. 4" Conc. Sidewalk

BM #4 "X" Cut Top Curb @ SW Cor. Sidewalk @ the NE Quad. of Woodlawn & Osie 43.63' Rt. Sta. 45+23.88 Elev. 138.79

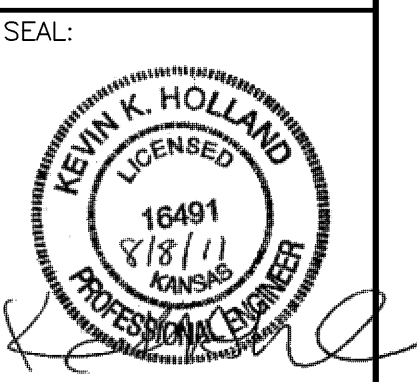
CP #3 - Set 1/2" Rebar w/ Red Cap  
 N 1677934.26 E 1670855.83 El. = 139.26  
 1.  $\phi$  Woodlawn Blvd. 29.50 W  
 2.  $\phi$  Calvin St. to W. 55.60 N  
 3.  $\phi$  Conc. Drove between Apt. 1630 & 1636 Woodlawn 28.00 S  
 4. WSW Cor. Apt. Bldg. #1630 30.91 ENE

CP #2 - Set 1/2" Rebar w/ Red Cap  
 N 1678231.58 E 1670740.92 El. = 138.42  
 1.  $\phi$  Woodlawn Blvd. 81.00 E  
 2. NE Cor. Ret. Wall @ NE Cor. Parking (Unruh Alignment) 19.71 SSE  
 3.  $\phi$  Top 4"x4" Conc. Fiber Optic Warning Post 31.94 SSE  
 4.  $\phi$  Top Tel. Ped. 15.44 SW

NE Cor. Sec. 36 T27S R1E  
 Fnd. 1/2" Pipe in Thimble  
 1. In  $\phi$  Intersection Harry & Woodlawn  
 2. "X" Top Curb @ SSW ECR Island  
 3. To Top 2" Alum. Disc. COW BM  
 4. "X" Cut  $\phi$  End Cap Island  
 5. "X" Cut  $\phi$  End Cap Island  
 6. "X" Cut Top Curb 3.0' N SW Cor. Island  
 N 1678289.186 E 1670822.442 El. = 139.003

52.36 SW  
 76.76 SE  
 49.15 ESE  
 51.63 NE  
 61.85 NNE  
 El. = 139.003

REVISED



Cook, Flatt & Strobel  
 ENGINEERS, P.A.

CFS PROJECT NO:  
 10-5048

CITY OF WICHITA, KANSAS  
**E. HARRY ST. & WOODLAWN ST.  
 INTERSECTION**

DESIGNED BY: KKH DRAWN BY: BMG CHECKED BY: KWB  
 DATE: 08-01-11

SHEET TITLE:  
**SITE PLAN**

PROJECT NUMBER  
 87N-0494-01

**FINAL  
 PLANS**

SHEET NUMBER:  
**8 of 69**