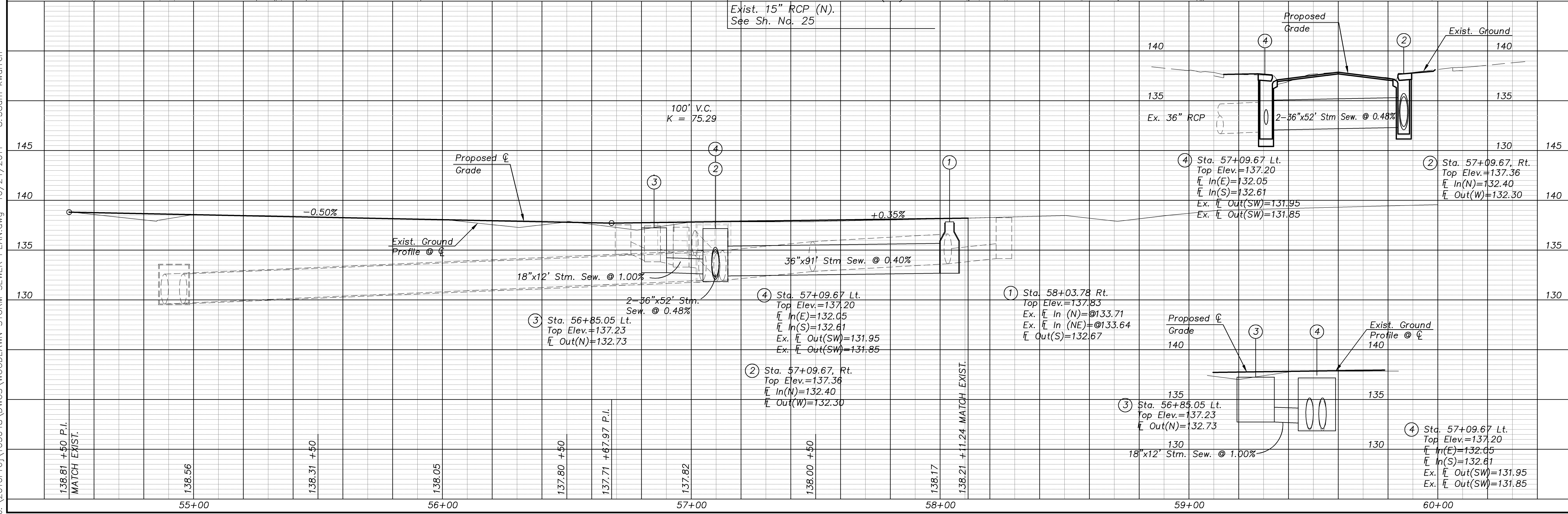
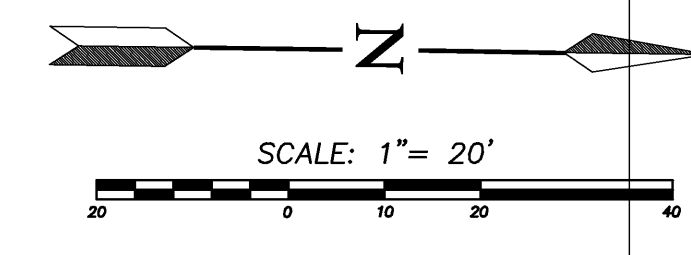
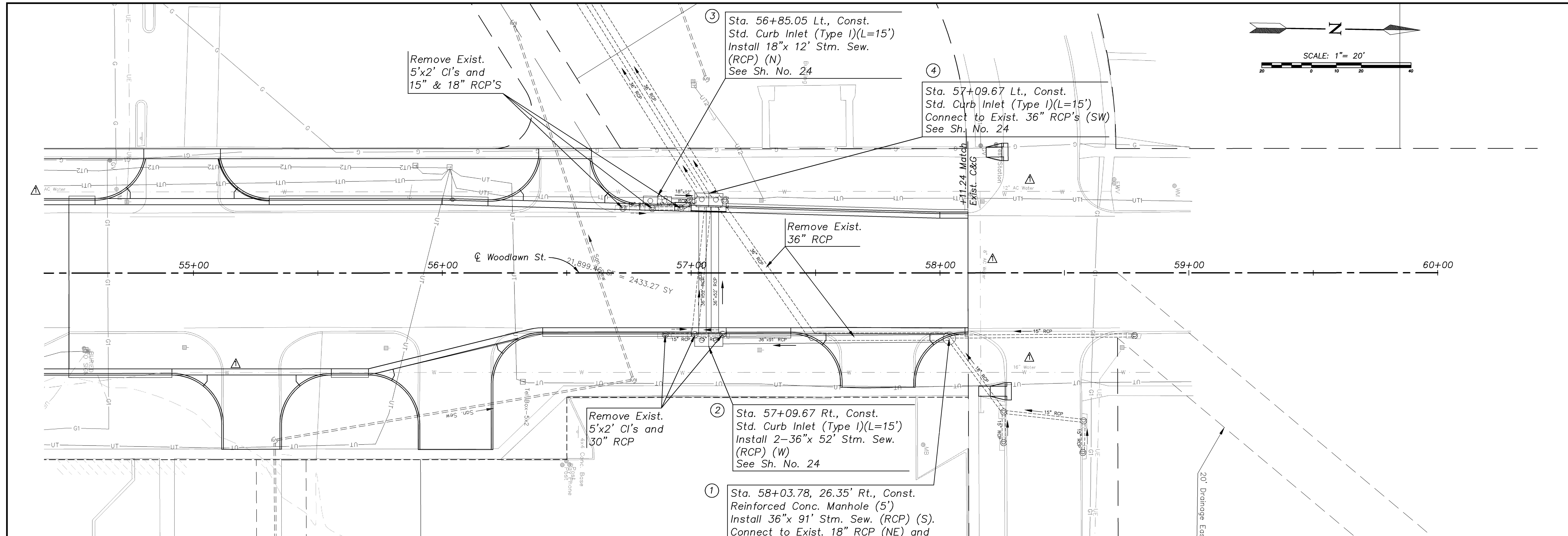
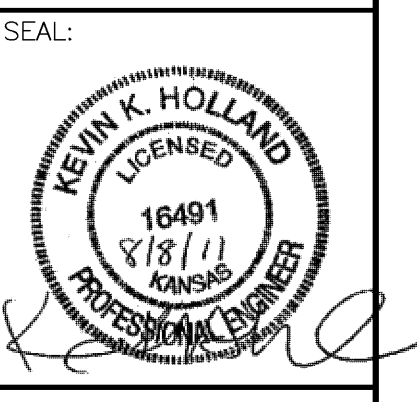


J:\2010Proj\105048\DWGS\WOODLAWN STORM SEWER PLAN.dwg 10/24/2011 - 8:38am kwarren



REVISED
 Added Ex. Water Line



Cook, Flatt & Strobel
 ENGINEERS, P.A.
CFS

CFS PROJECT NO:
 10-5048

CITY OF WICHITA, KANSAS
**E. HARRY ST. & WOODLAWN ST.
 INTERSECTION**
 DATE: 08-01-11 DESIGNED BY: KKH DRAWN BY: BMG CHECKED BY: KWB

SHEET TITLE:
STORM SEWER

PROJECT NUMBER
 87N-0494-01

FINAL PLANS

SHEET NUMBER:
23 of 69