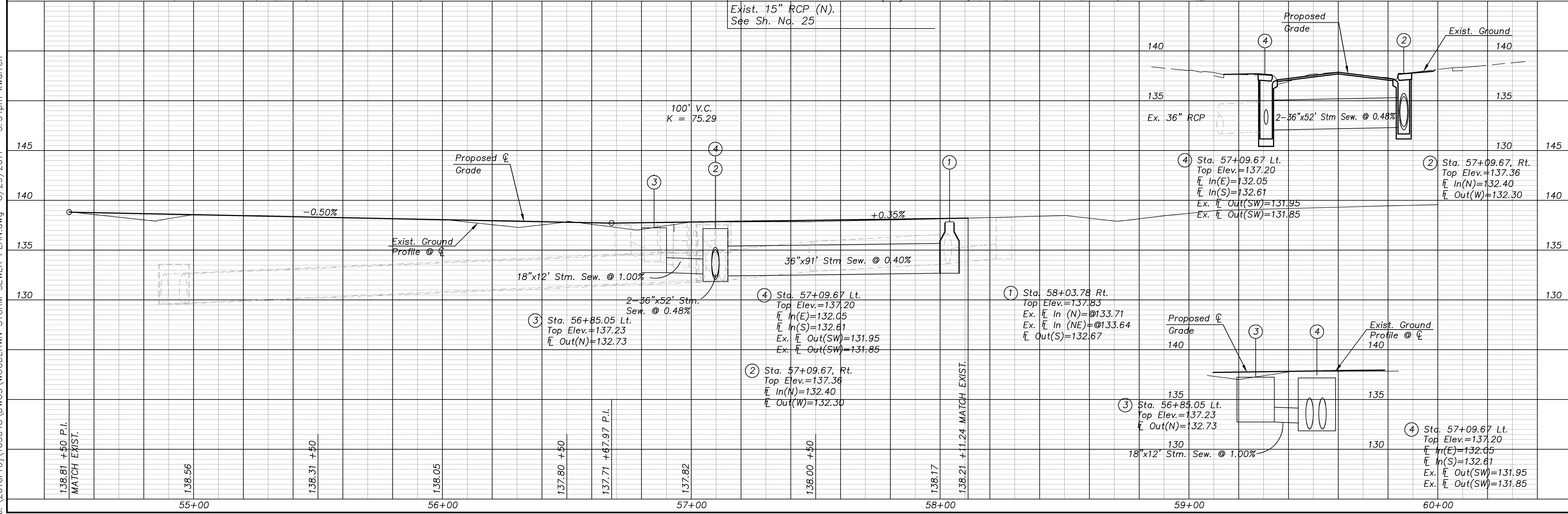
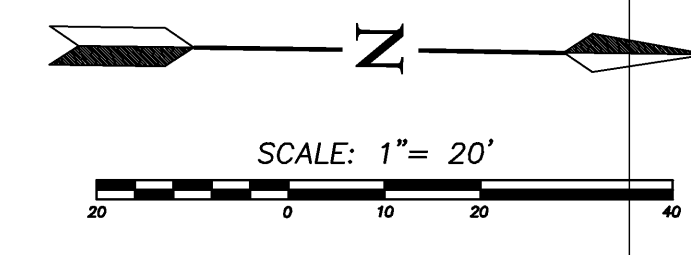
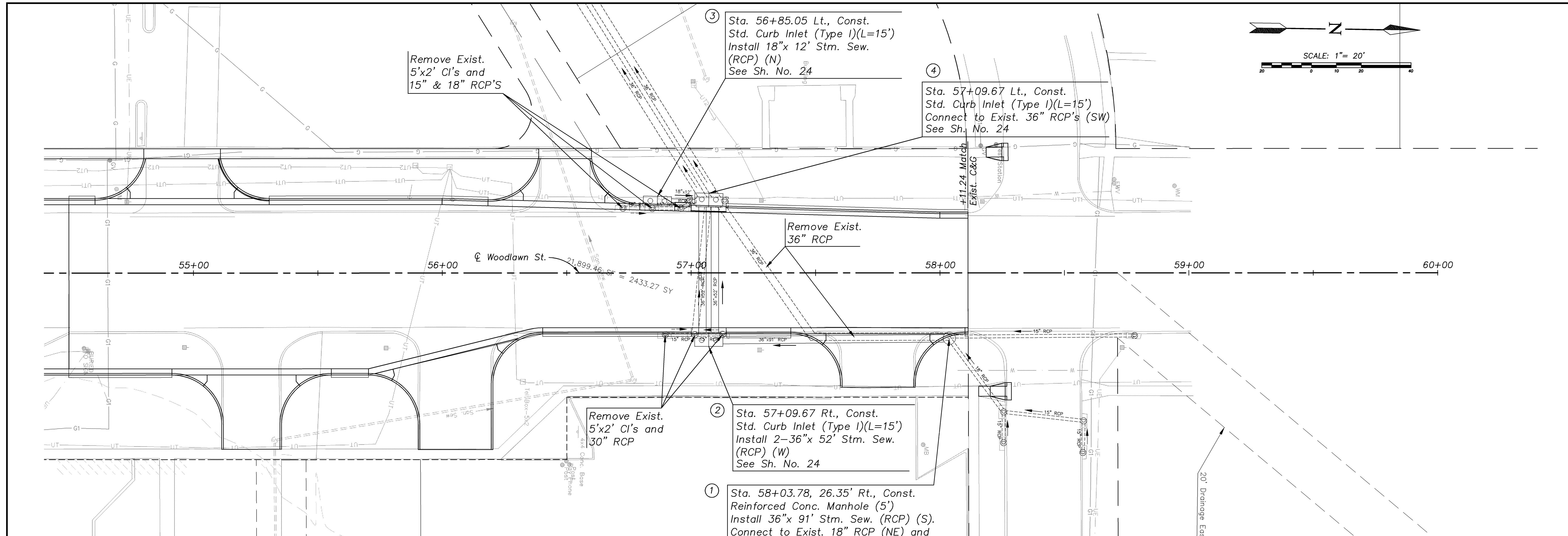
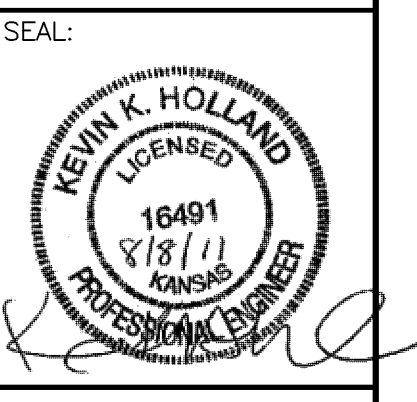


J:\2010Proj\105048\DWGS\WOODLAWN STORM SEWER PLAN.dwg 8/29/2011 - 3:34pm kwarren



REVISED



Cook, Flatt & Strobel
ENGINEERS, P.A.
CFS

CFS PROJECT NO:
10-5048

CITY OF WICHITA, KANSAS
**E. HARRY ST. & WOODLAWN ST.
INTERSECTION**

SHEET TITLE:
STORM SEWER

PROJECT NUMBER
87N-0494-01

FINAL PLANS

SHEET NUMBER:
23 of 69

DESIGNED BY: KKH DRAWN BY: BMG CHECKED BY: KWB