

Cook, Flatt & Strobel  
ENGINEERS, P.A.  
CFS

CFS PROJECT NO:  
10-5048

CITY OF WICHITA, KANSAS  
**E. HARRY ST. & WOODLAWN ST.  
INTERSECTION**  
DATE: 08-01-11 DESIGNED BY: KWB DRAWN BY: JR CHECKED BY: KKH

SHEET TITLE:  
**SIGNAL  
PLAN**

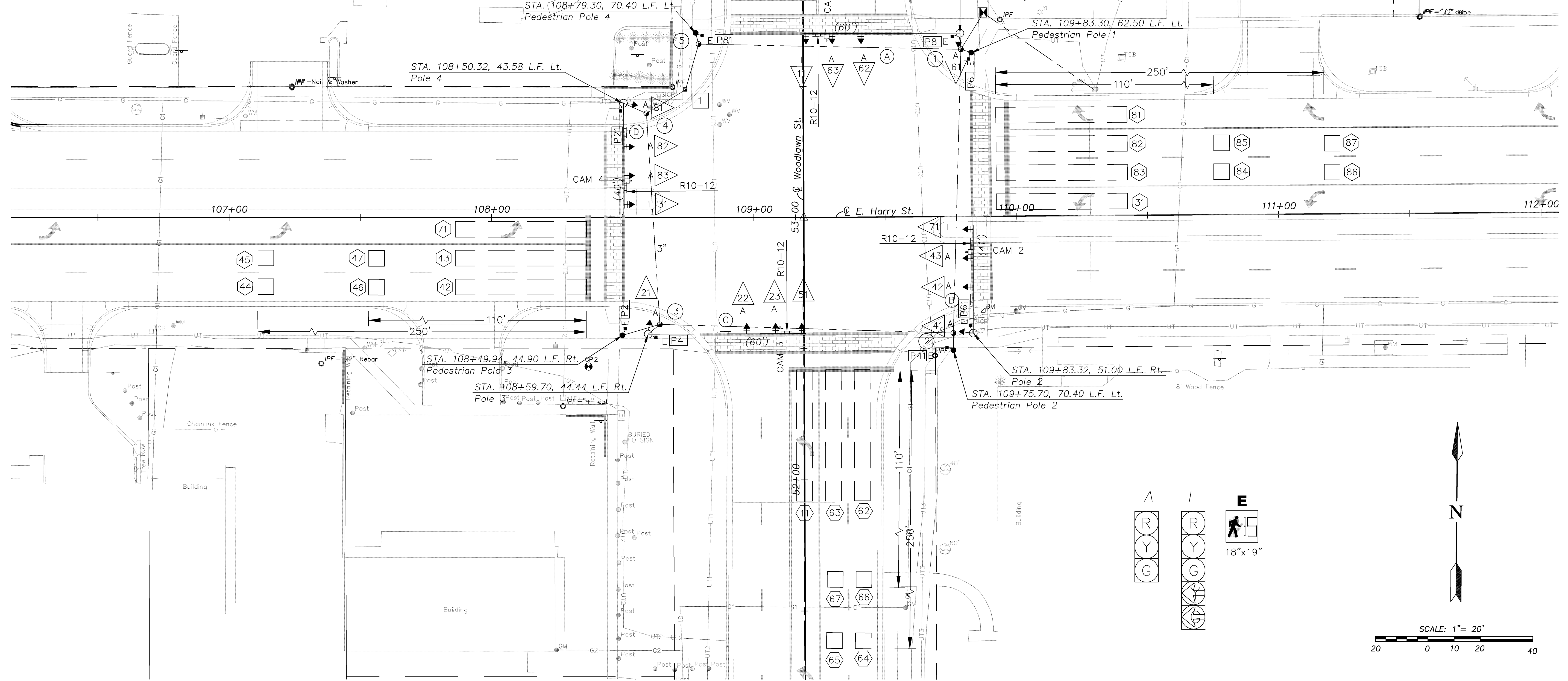
PROJECT NUMBER  
87N-0494-01

**FINAL  
PLANS**

SHEET NUMBER:  
**48 of 69**

- NOTES:
- The locations of existing underground utilities are shown in an approximate way only and have not been independently verified. The contractor shall be responsible for contacting all utility companies for locations of all underground lines prior to excavation and be fully responsible for any and all damages, which might be occasioned by the Contractor's failure to exactly locate and preserve any and all underground utilities. Contact information for the utility companies is listed on the General Notes Sheet (Sh. No. 4) of this plan set.
  - Detection zones shall be centered in their respective lanes.
  - All signal poles, cameras, detection zones, junction boxes, controllers and service boxes shall be field located by the contractor and verified by the Engineer prior to installation.
  - Any conduit to be installed under existing paved areas shall be bored.
  - Factory Conduit bends shall be installed into the service boxes, junction boxes and/or pole bases from conduit runs. Conduit entering service boxes, junction boxes and/or pole bases shall be continuous into the service box, junction box or pole base.
  - All work and equipment shall conform to the latest edition of the City of Wichita's Standard Specifications and standard details for traffic signals.
  - All areas disturbed by construction shall be sodded as directed by the construction representative.
  - Forms (including rebar cages, etc.), conduit and anchor bolts shall be installed and in place for review by the Engineer.
  - For stop bar locations, refer to the pavement marking plans.
  - All conduit for the traffic signals shall be rigid steel.
  - All poles are stationed off of the centerline of E. Harry St.
  - Cameras to be installed on Mast Arm with 5' Astro Bracket.

SYMBOLS		LEGEND	
1	- Junction Box Number		Mast Arm Mounted Traffic Signal w/Backplate
2	- Service Box Number		Vertical Bracket Mounted Traffic Signal
B	- Sign Letter		Luminaire
27	- Signal Head Number		Traffic Signal Pole
P03	- Pedestrian Head Number		Traffic Signal Pedestal
5	- Detection Zone		Traffic Signal Head w/Type Designation
			Pedestrian Head
			Controller
			Junction Box
			Service Box
			Vehicle Detector
			3 inch Conduit
			2 inch Conduit
			Video Camera
			Sign Mounted to Mast Arm
			Video Detection Zone



J:\2010\87N-0494\87N-0494-01\87N-0494-01-11-08-01.dwg