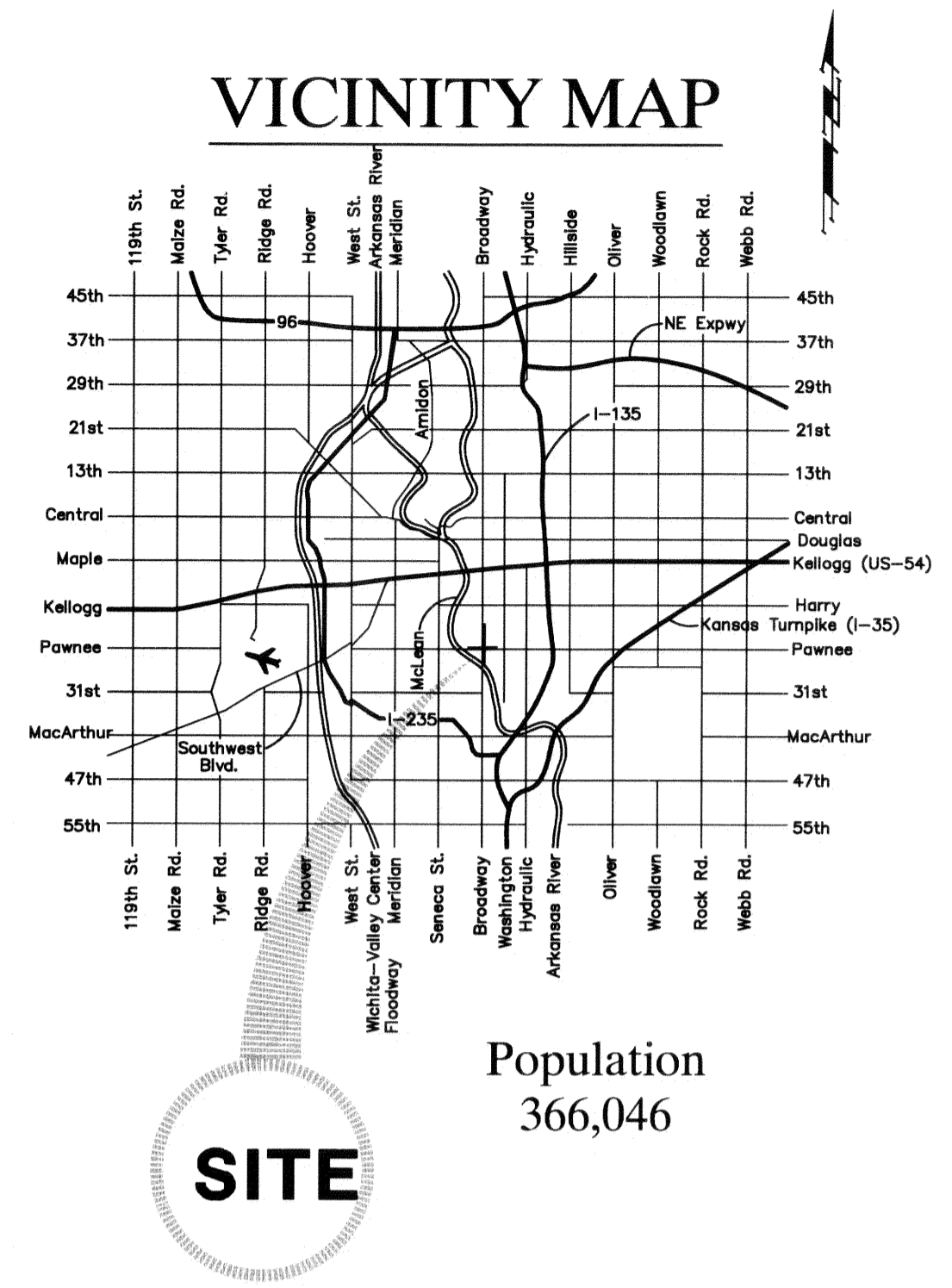


FHWA REGION NO.	STATE	PROJECT NO.	FISCAL YEAR	SHEET NO.	TOTAL SHEETS
7	KANSAS	87 N-0495-01	2011	1	64

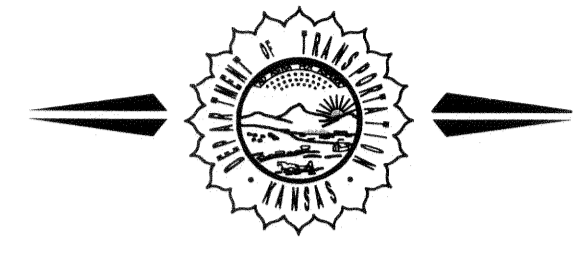
Index

1	Title Sheet	
2	Keysheet	
3	General Notes	GRADING
4-5	Typical Sections	SURFACING
6	Wheelchair Ramp Detail	STORM SEWER
7	Drive Detail	SEEDING
8	Pav Details	TRAFFIC SIGNALS
9	Joint Dowel Detail	
10-11	Pawnee Paving Plans	
12-14	Broadway Paving Plans	
15	V.G. Details	
16	Intersection Joint Plan	
17	Intersection Grading Plan	
18-22	Pavement Joint Plan	
23-24	SWS Plan/Profiles	
25-29	SWS Details	
30-34	Marking and Signing Plans	
35	Sign Details	
36-37	Signalization Details	
38-39	Signalization Plan	
40-41	Summary of Quantities	
42-46	Construction Sequence	
47-51C	Traffic Control Details	
52	Erosion Control Plan	
53	Sodding Plan	
54	Erosion Control BMP's	
55-57	Pawnee Cross Sections	
58-64	Broadway Cross Sections	



Population
366,046

STATE OF KANSAS
DEPARTMENT OF TRANSPORTATION



CONSTRUCTION PLANS FOR PROPOSED
PAWNEE & BROADWAY INTERSECTION

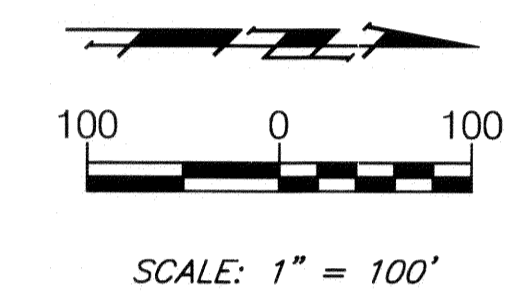
FEDERAL AID URBAN SYSTEM PROJECT

FOR
THE CITY OF WICHITA,
SEDGWICK COUNTY, KANSAS

James L. Armour, P.E., City Engineer

August, 2011

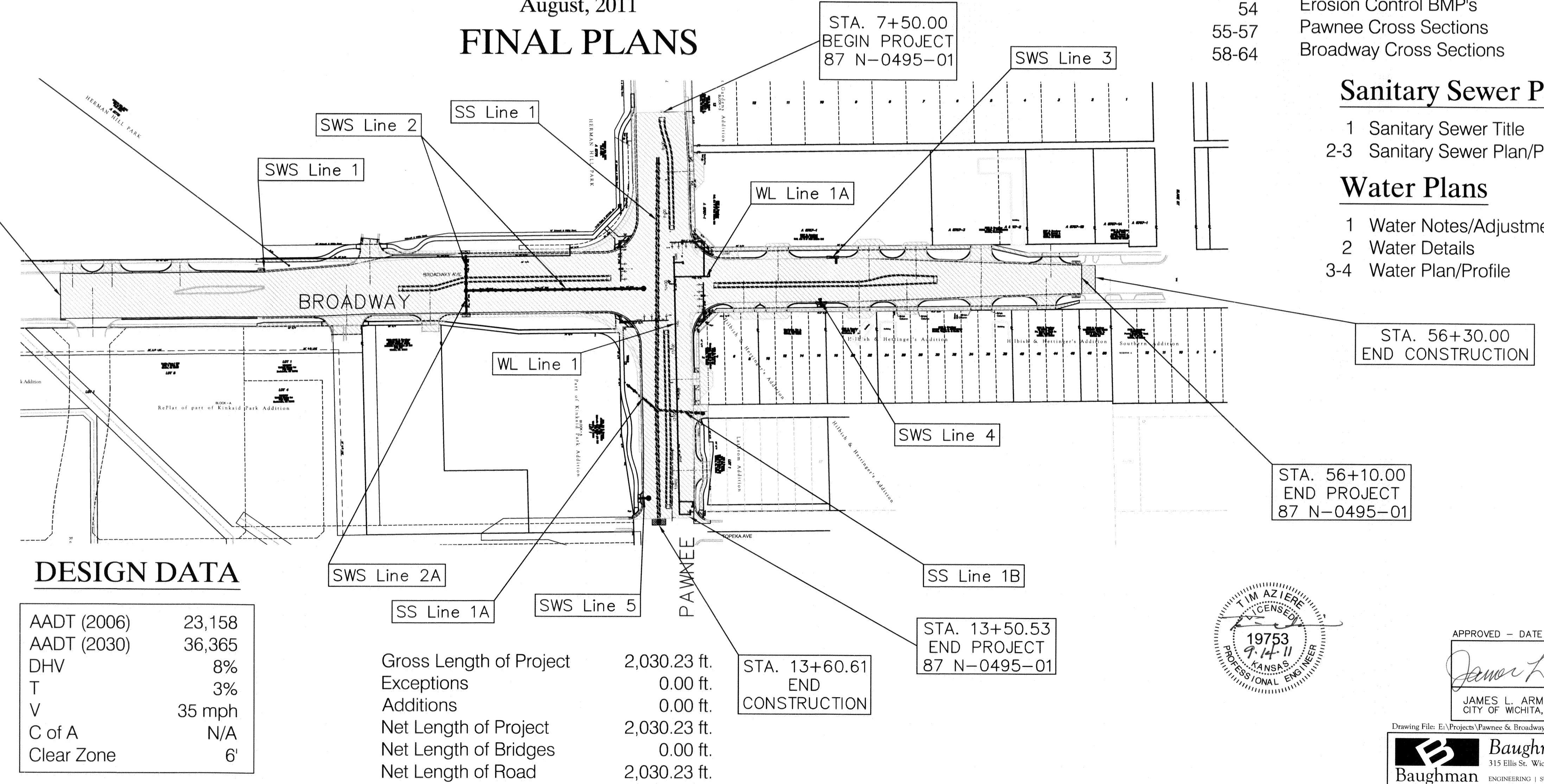
FINAL PLANS



Paving Project
City Project No. 472-84881
O.C.A. No. 707014

Water Project
City Project No. 448-90532
O.C.A. No. 636244

Sanitary Sewer Lines
City Project No. 468-84784
O.C.A. No. 620574



DESIGN DATA

AAADT (2006)	23,158
AAADT (2030)	36,365
DHV	8%
T	3%
V	35 mph
C of A	N/A
Clear Zone	6'

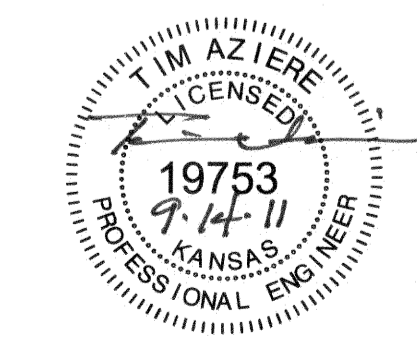
Gross Length of Project	2,030.23 ft.
Exceptions	0.00 ft.
Additions	0.00 ft.
Net Length of Project	2,030.23 ft.
Net Length of Bridges	0.00 ft.
Net Length of Road	2,030.23 ft.

Sanitary Sewer Plans

- 1 Sanitary Sewer Title
- 2-3 Sanitary Sewer Plan/Profiles

Water Plans

- 1 Water Notes/Adjustment Table
- 2 Water Details
- 3-4 Water Plan/Profile



APPROVED - DATE SEPT 15, 2011

James L. Armour
JAMES L. ARMOUR, P.E., CITY ENGINEER
CITY OF WICHITA, KANSAS