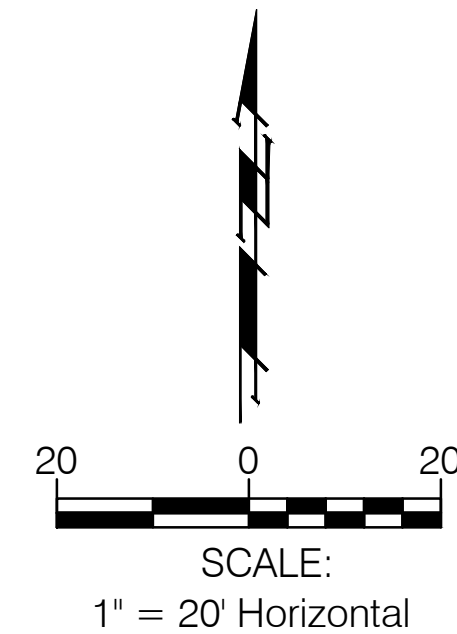
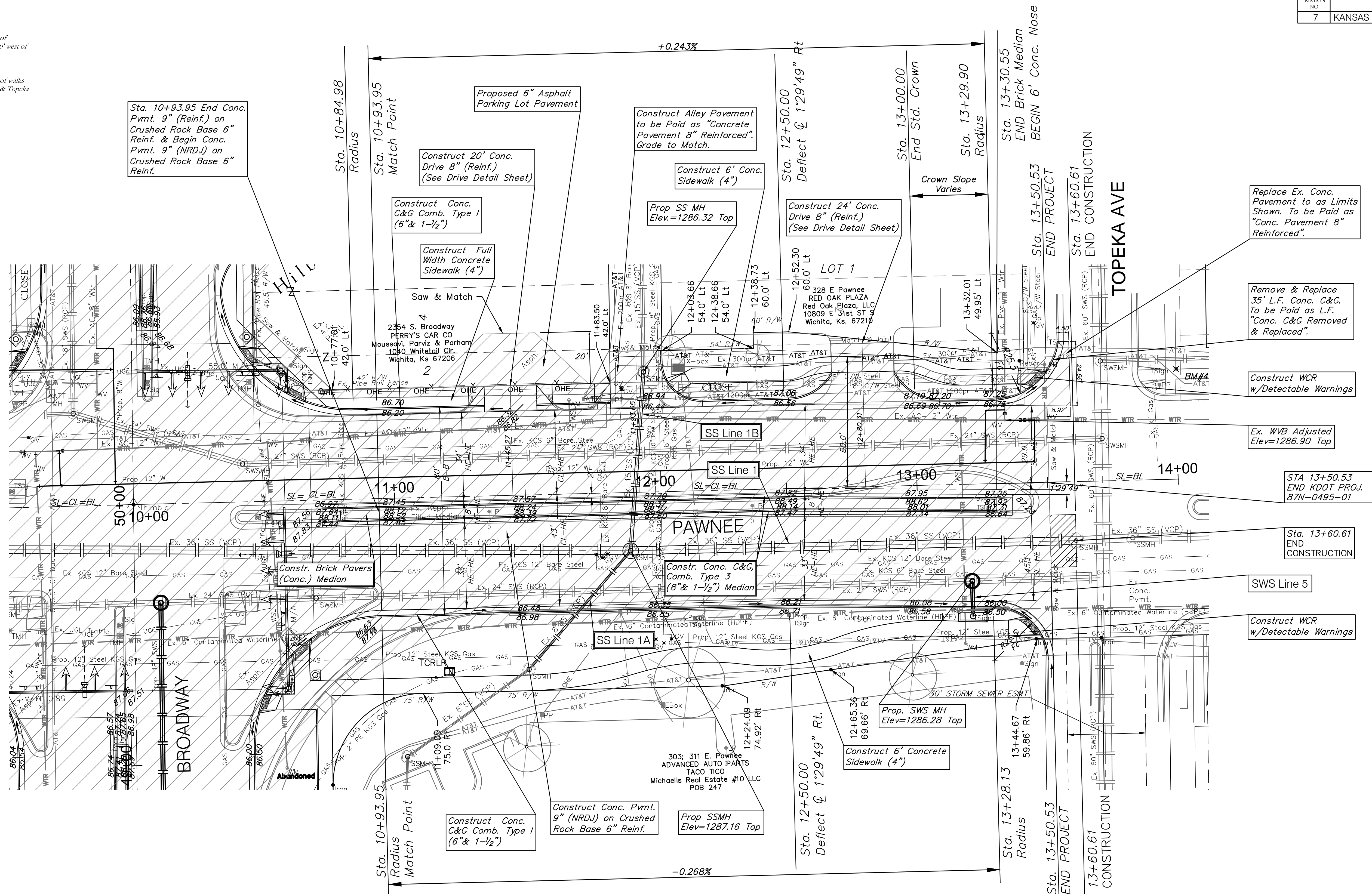


BM#2 - C.O.W. Disc located on the northwest corner of Pawnee & Broadway (52' north of CL Pawnee, 40' west of CL Broadway)  
Elev. = 1286.28 (NAVD 88)

BM#4 - "x" Cut on walk 0.1' south & 0.2' east of back of walks north & east at the northeast corner of Pawnee & Topeka  
Elev. = 1286.99 (NAVD 88)



<p><b>Note:</b> Trees/Shrubs to be removed are marked thus:</p>	<p><b>Note:</b> Mill &amp; Overlay are indicated by:</p>	<p><b>Note:</b> Pavement, Sidewalks, and Etc. To Be Removed Are Indicated By:</p>
---	--	---

Drawing File: E:\Projects\Pawnee & Broadway\Civil 3d\Base  
Project No. 09-12-E435  
Design: T. Aziere  
Drawn: JDM  
Approved: T. Aziere  
Scale: 1"=20'

CAPITAL IMPROVEMENT PROJECT  
**PAWNEE PAVING**  
Sta. 10+93.95 to Sta. 13+28.70  
PAWNEE / BROADWAY INTERSECTION

**Baughman Company, P.A.**  
315 Ellis St. Wichita, KS 67211 P 316-262-7271 F 316-262-0149  
ENGINEERING | SURVEYING | PLANNING | LANDSCAPE ARCHITECTURE