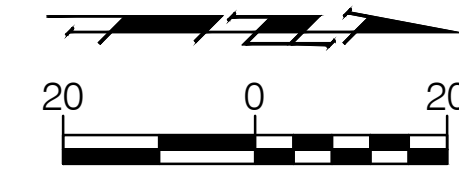


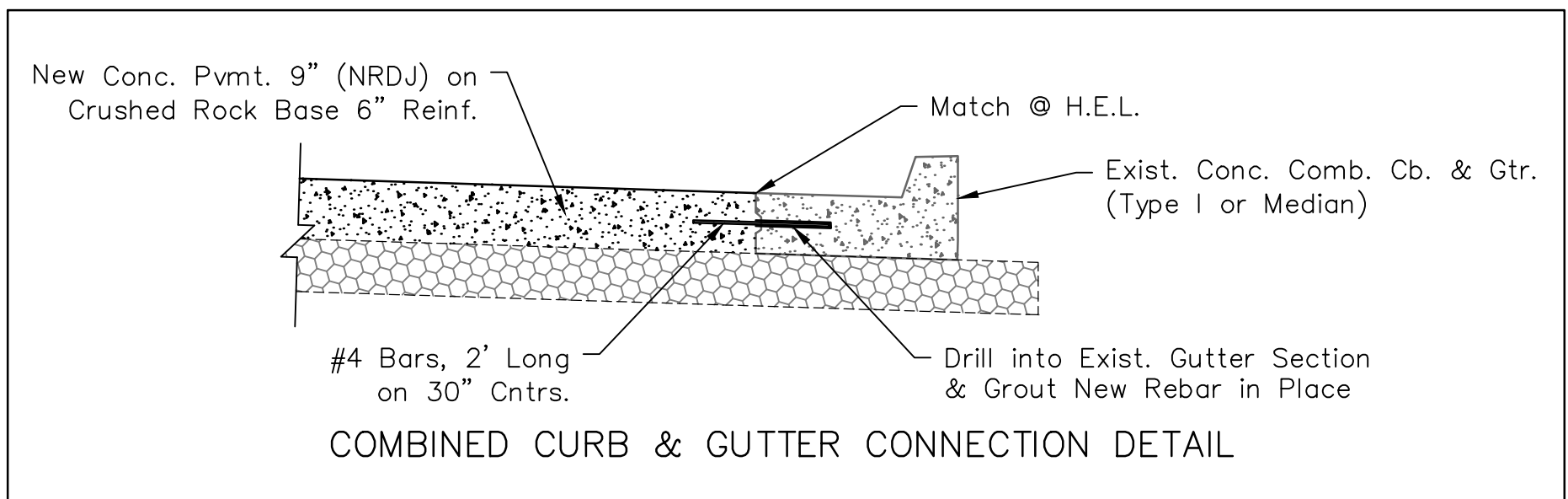
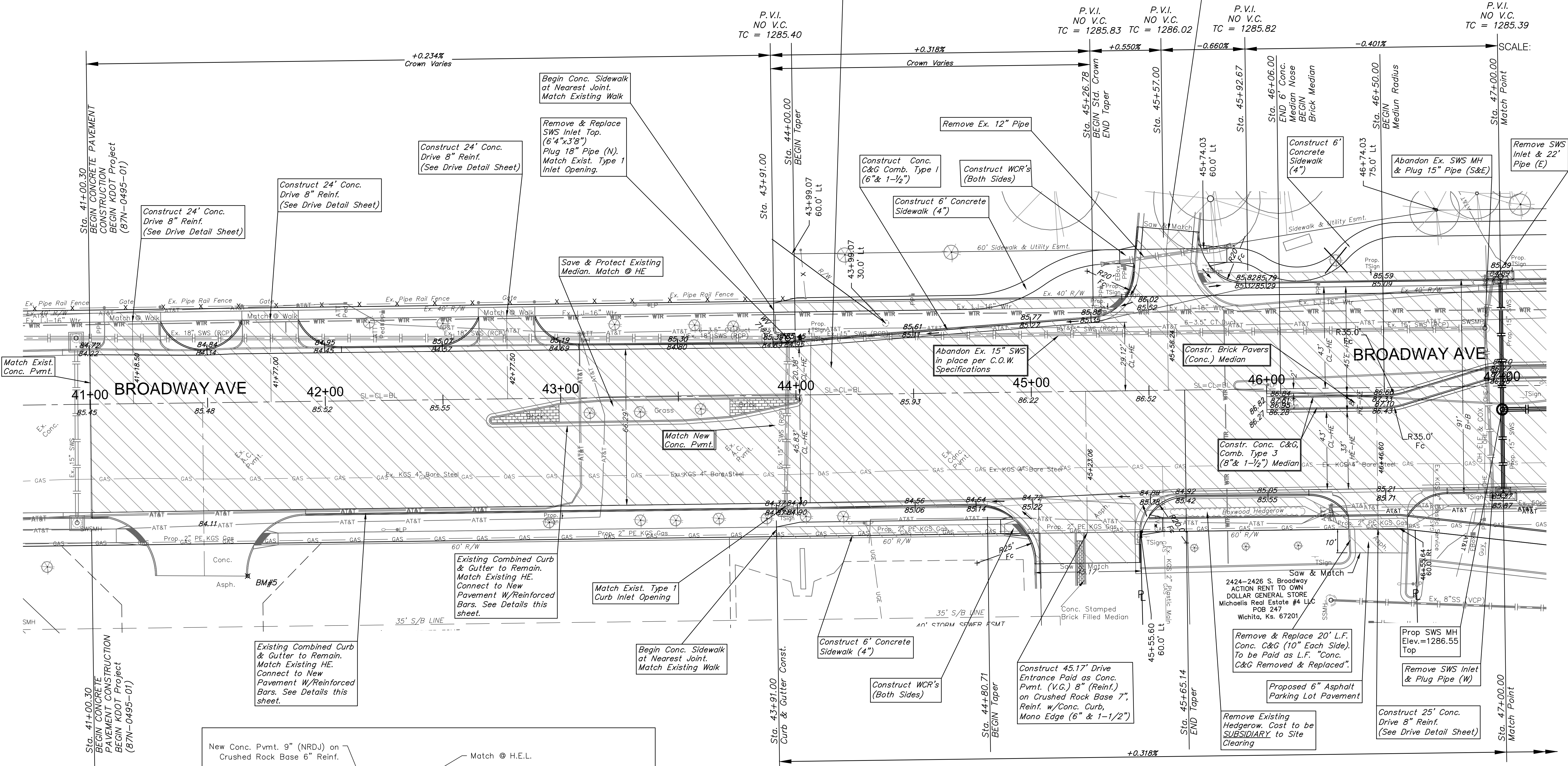
FHWA REGION NO.	STATE	PROJECT NO.	FISCAL YEAR	SHEET NO.	TOTAL SHEETS
7	KANSAS	87 N-0495-01	2011	12	64

HSIP-N049 (501)



BM#2 - C.O.W. Disc located on the northwest corner of Pawnee & Broadway (52' north of CL Pawnee, 40' west of CL Broadway)
Elev. = 1286.28 (NAVD 88)

BM#5 - "a" Cut on the top of the north curb of the south drive entrance to Walmart
Elev. = 1287.10 (NAVD 88)



- Note:** Trees/Shrubs to be removed are marked thus:
- Note:** Mill & Overlay are indicated by:
- Note:** Pavement, Sidewalks, and Etc. To Be Removed Are Indicated By:

Drawing File: E:\Projects\Pawnee & Broadway\Civil 3d\Base
Project No. 09-12-E435
CAPITAL IMPROVEMENT PROJECT
BROADWAY PAVING
Sta. 41+00.30 to Sta. 47+00.00
PAWNEE / BROADWAY INTERSECTION

Baughman Company, P.A.
315 Ellis St. Wichita, KS 67211 P 316-262-7271 F 316-262-0149
ENGINEERING | SURVEYING | PLANNING | LANDSCAPE ARCHITECTURE