

FWA REGION NO.	STATE	PROJECT NO.	FISCAL YEAR	SHEET NO.	TOTAL SHEETS
7	KANSAS	87 N-0495-01	2011	13	64

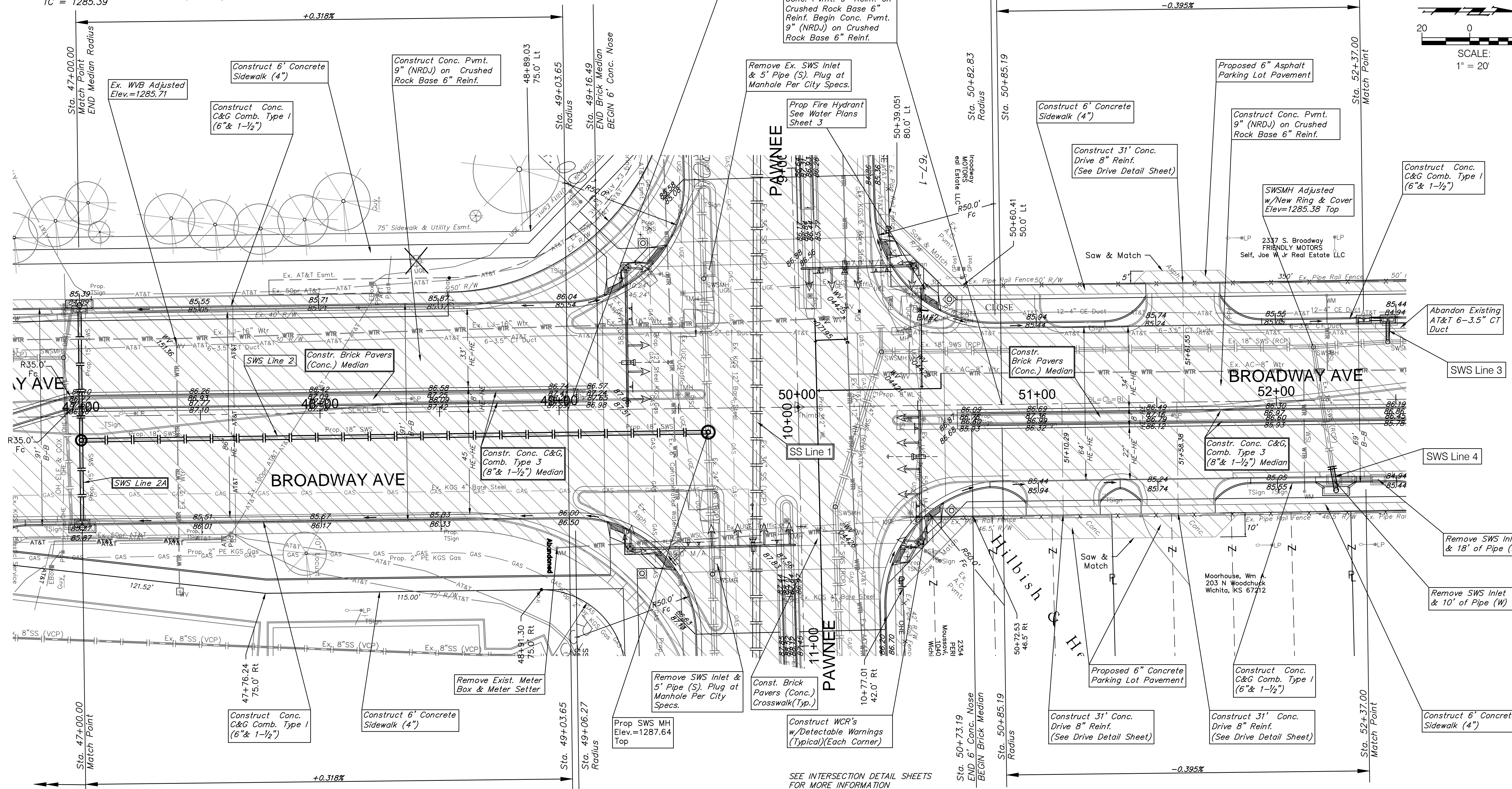
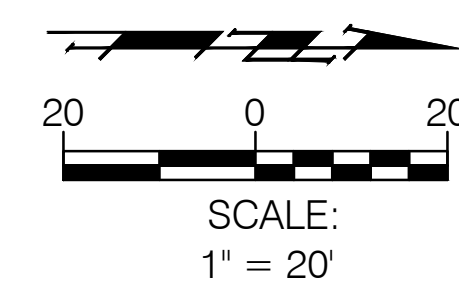
HSIP-N049 (501)

BM#2 - C.O.W. Disc located on the northwest corner of Pawnee & Broadway (52' north of CL Pawnee, 40' west of CL Broadway)
Elev. = 1286.28 (NAVD 88)

BM#3 - "x" Cut on top of curb located on the west curb to the sub-station entrance south of Pawnee across from Market St.
Elev. = 1283.89 (NAVD 88)

P.V.I. NO V.C.
TC = 1285.39

P.V.I. NO V.C.
TC = 1285.40



- Note:**
Trees/Shrubs to be removed are marked thus:
- Note:**
Mill & Overlay are indicated by:
- Note:**
Pavement, Sidewalks, and Etc. To Be Removed Are indicated by:

Drawing File: E:\Projects\Pawnee & Broadway\Civil 3d\Base
CAPITAL IMPROVEMENT PROJECT
BROADWAY PAVING
Sta. 47+00.00 to Sta. 52+37.00
PAWNEE / BROADWAY INTERSECTION
Scale: 1"=20'

Baughman Company, P.A.
315 Ellis St. Wichita, KS 67211 P 316-262-7271 F 316-262-0149
ENGINEERING | SURVEYING | PLANNING | LANDSCAPE ARCHITECTURE