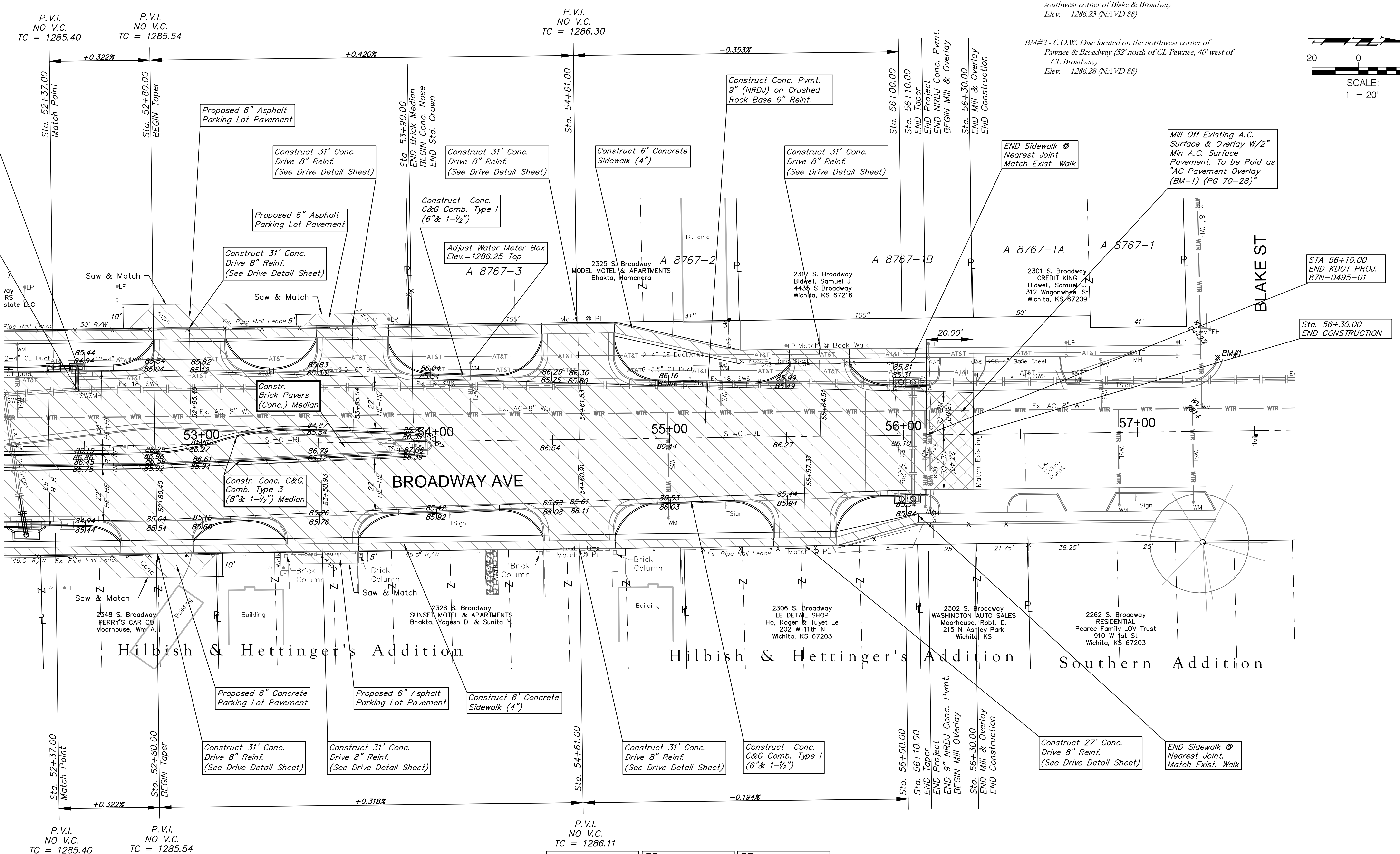
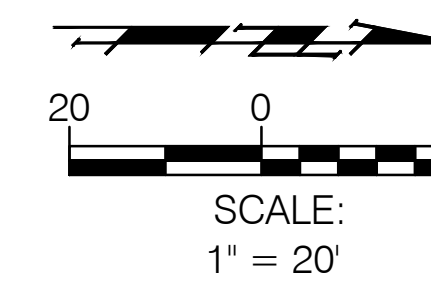


BM#1 - "a" Cut on top of curb located on west return on the southwest corner of Blake & Broadway  
Elev. = 1286.23 (NAVD 88)

BM#2 - C.O.W. Disc located on the northwest corner of Pawnee & Broadway (52' north of CL Pawnee, 40' west of CL Broadway)  
Elev. = 1286.28 (NAVD 88)



STA 56+10.00  
END KDOT PROJ.  
87N-0495-01

Sta. 56+30.00  
END CONSTRUCTION

**Note:**  
Trees/Shrubs to be removed are marked thus:

**Note:**  
Mill & Overlay are indicated by:

**Note:**  
Pavement, Sidewalks, and Etc. To Be Removed Are indicated by:

Drawing File: E:\Projects\Pawnee & Broadway\Civil 3d\Base  
Project No. 09-12-E435 CAPITAL IMPROVEMENT PROJECT  
BROADWAY PAVING  
Sta. 52+37.00 to Sta. 56+10.00  
PAWNEE / BROADWAY INTERSECTION