

| FHWA REGION NO. | STATE | PROJECT NO. | FISCAL YEAR | SHEET NO. | TOTAL SHEETS |
|-----------------|--------|--------------|-------------|-----------|--------------|
| 7 | KANSAS | 87 N-0495-01 | 2011 | 2 | 64 |

HSIP-N049 (501)

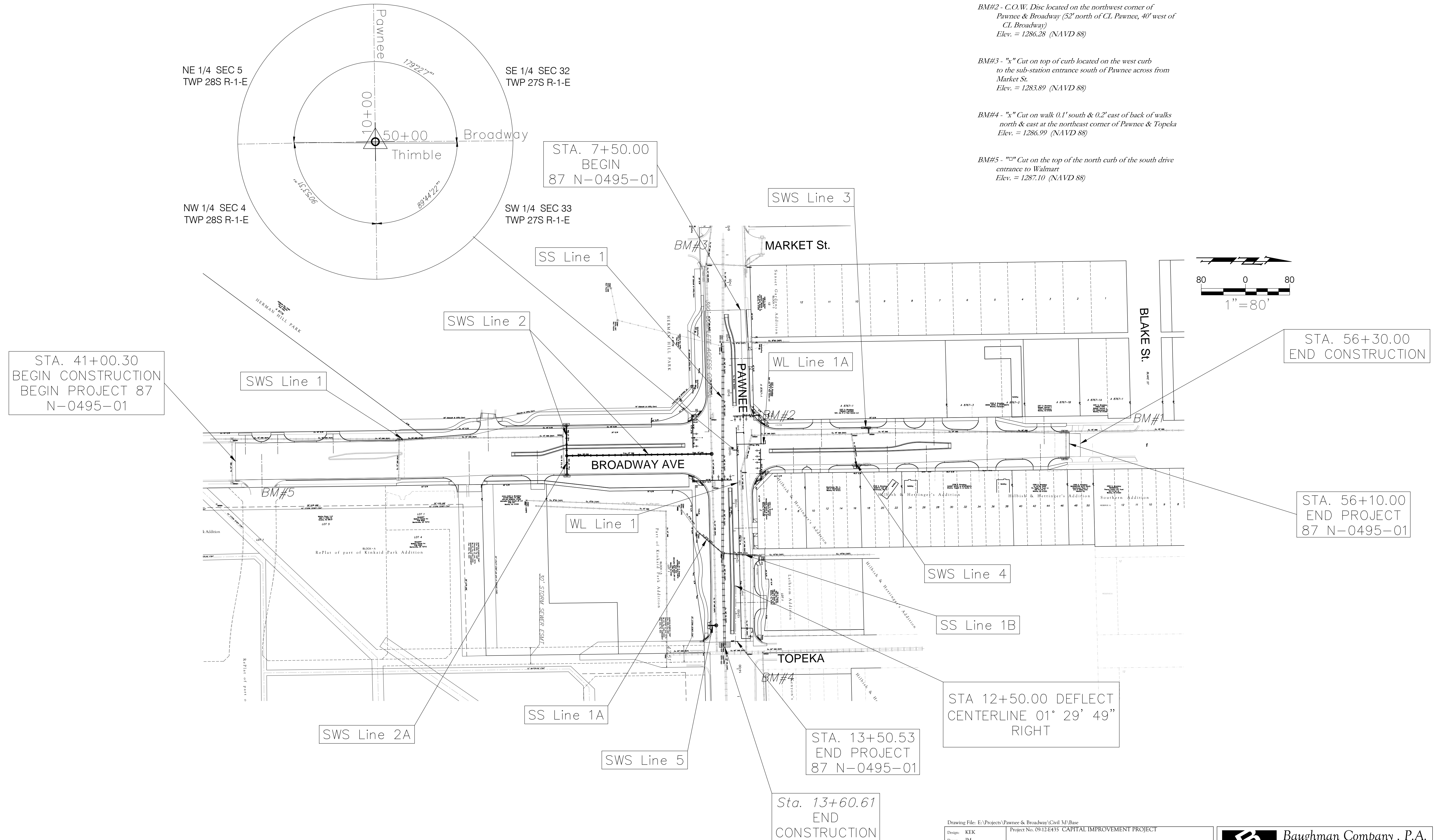
BM#1 - "□" Cut on top of curb located on west return on the southwest corner of Blake & Broadway
Elev. = 1286.23 (NAVD 88)

BM#2 - C.O.W. Disc located on the northwest corner of Pawnee & Broadway (52' north of CL Pawnee, 40' west of CL Broadway)
Elev. = 1286.28 (NAVD 88)

BM#3 - "x" Cut on top of curb located on the west curb to the sub-station entrance south of Pawnee across from Market St.
Elev. = 1283.89 (NAVD 88)

BM#4 - "x" Cut on walk 0.1' south & 0.2' east of back of walks north & east at the northeast corner of Pawnee & Topeka
Elev. = 1286.99 (NAVD 88)

BM#5 - "□" Cut on the top of the north curb of the south drive entrance to Walmart
Elev. = 1287.10 (NAVD 88)



Drawing File: E:\Projects\Pawnee & Broadway\Civil 3d\Base
 Design: KEK
 Drawn: JM
 Approved: T.Aliere
 Scale: NOTED
 Project No. 09-12-E435 CAPITAL IMPROVEMENT PROJECT
KEY SHEET
 PAWNEE / BROADWAY

Baughman Company, P.A.
 315 Ellis St. Wichita, KS 67211 P 316-262-7271 F 316-262-0149
 ENGINEERING | SURVEYING | PLANNING | LANDSCAPE ARCHITECTURE

July, 2011
 SHEET 2 OF 64