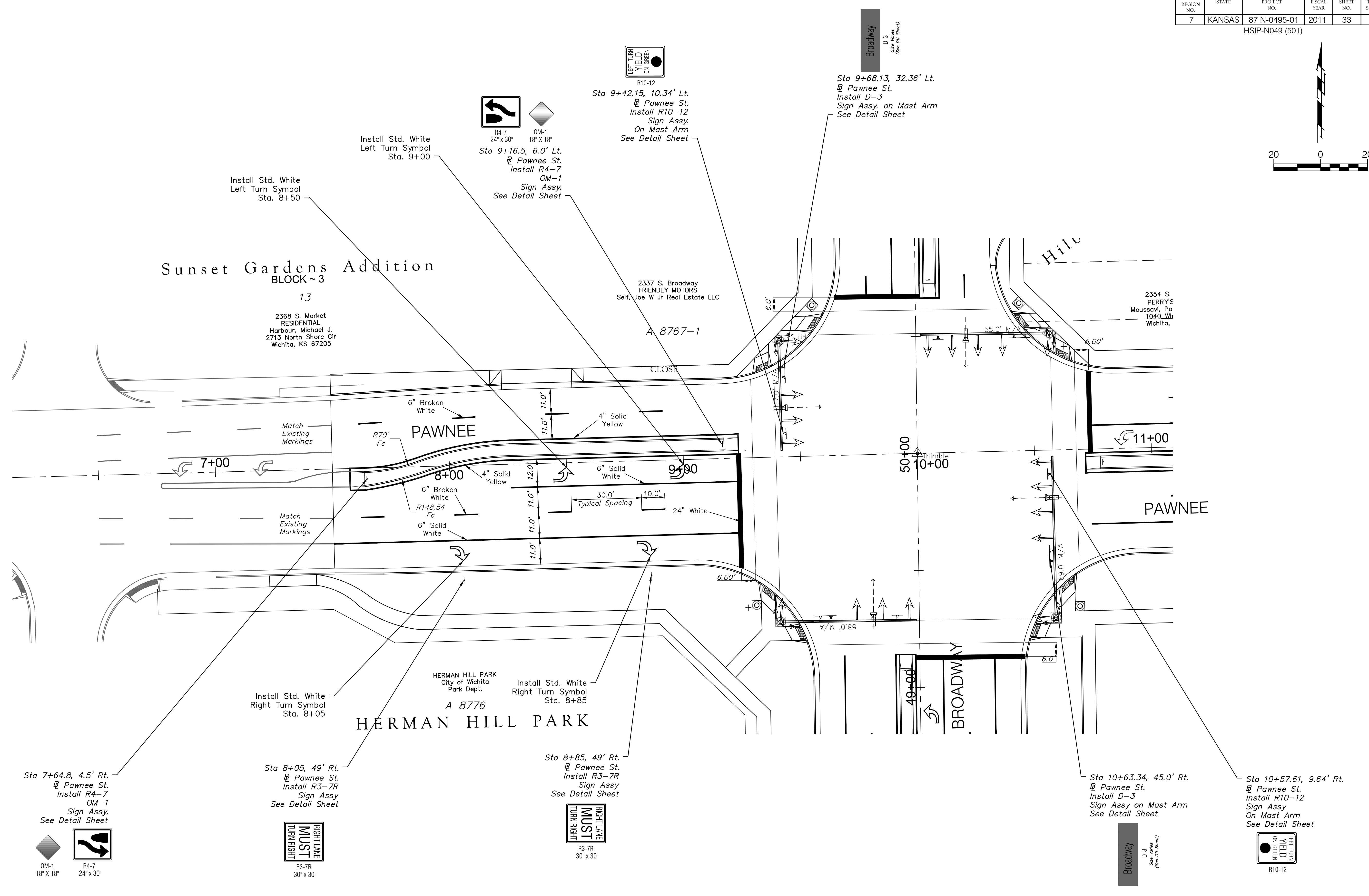
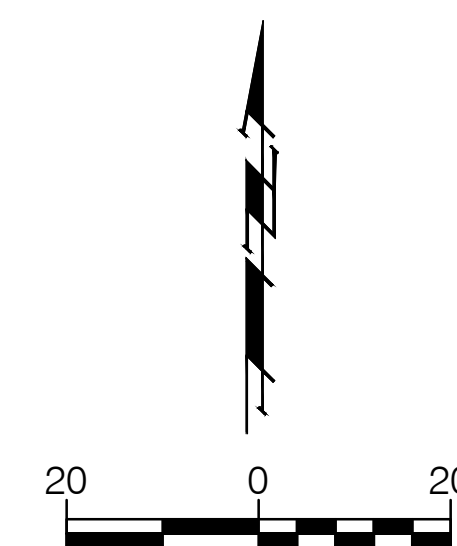
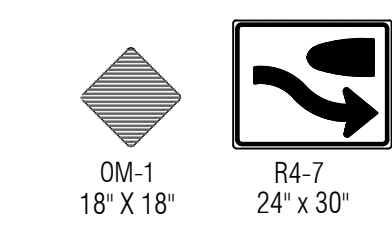


FHWA REGION NO.	STATE	PROJECT NO.	FISCAL YEAR	SHEET NO.	TOTAL SHEETS
7	KANSAS	87 N-0495-01	2011	33	64

HSIP-N049 (501)

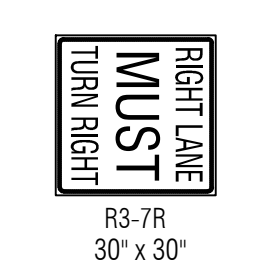


Sta 7+64.8, 4.5' Rt.
@ Pawnee St.
Install R4-7
OM-1
Sign Assy.
See Detail Sheet



Install Std. White
Right Turn Symbol
Sta. 8+05

Sta 8+05, 49' Rt.
@ Pawnee St.
Install R3-7R
Sign Assy
See Detail Sheet



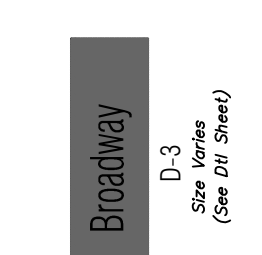
Install Std. White
Left Turn Symbol
Sta. 9+00

Sta 9+16.5, 6.0' Lt.
@ Pawnee St.
Install R4-7
OM-1
Sign Assy.
See Detail Sheet



Sta 9+42.15, 10.34' Lt.
@ Pawnee St.
Install R10-12
Sign Assy.
On Mast Arm
See Detail Sheet

Sta 9+68.13, 32.36' Lt.
@ Pawnee St.
Install D-3
Sign Assy. on Mast Arm
See Detail Sheet



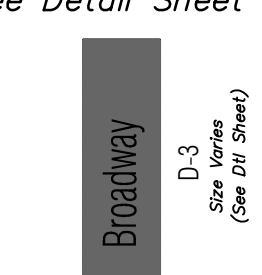
Install Std. White
Right Turn Symbol
Sta. 8+85

Install Std. White
Right Turn Symbol
Sta. 8+85

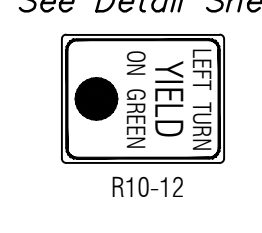
Sta 8+85, 49' Rt.
@ Pawnee St.
Install R3-7R
Sign Assy
See Detail Sheet



Sta 10+63.34, 45.0' Rt.
@ Pawnee St.
Install D-3
Sign Assy on Mast Arm
See Detail Sheet



Sta 10+57.61, 9.64' Rt.
@ Pawnee St.
Install R10-12
Sign Assy
On Mast Arm
See Detail Sheet



Drawing File: E:\Projects\Pawnee & Broadway\Civil 3d\Base

Design: T. Aziere
Drawn: JDM
Approved: T. Aziere
Scale: 1"=20'

Project No. 09-12-E435 CAPITAL IMPROVEMENT PROJECT
PAVEMENT MARKING
PAWNEE / BROADWAY INTERSECTION

Baughman Company, P.A.
315 Ellis St. Wichita, KS 67211 P 316-262-7271 F 316-262-0149
ENGINEERING | SURVEYING | PLANNING | LANDSCAPE ARCHITECTURE

July, 2011
SHEET 33 OF 64