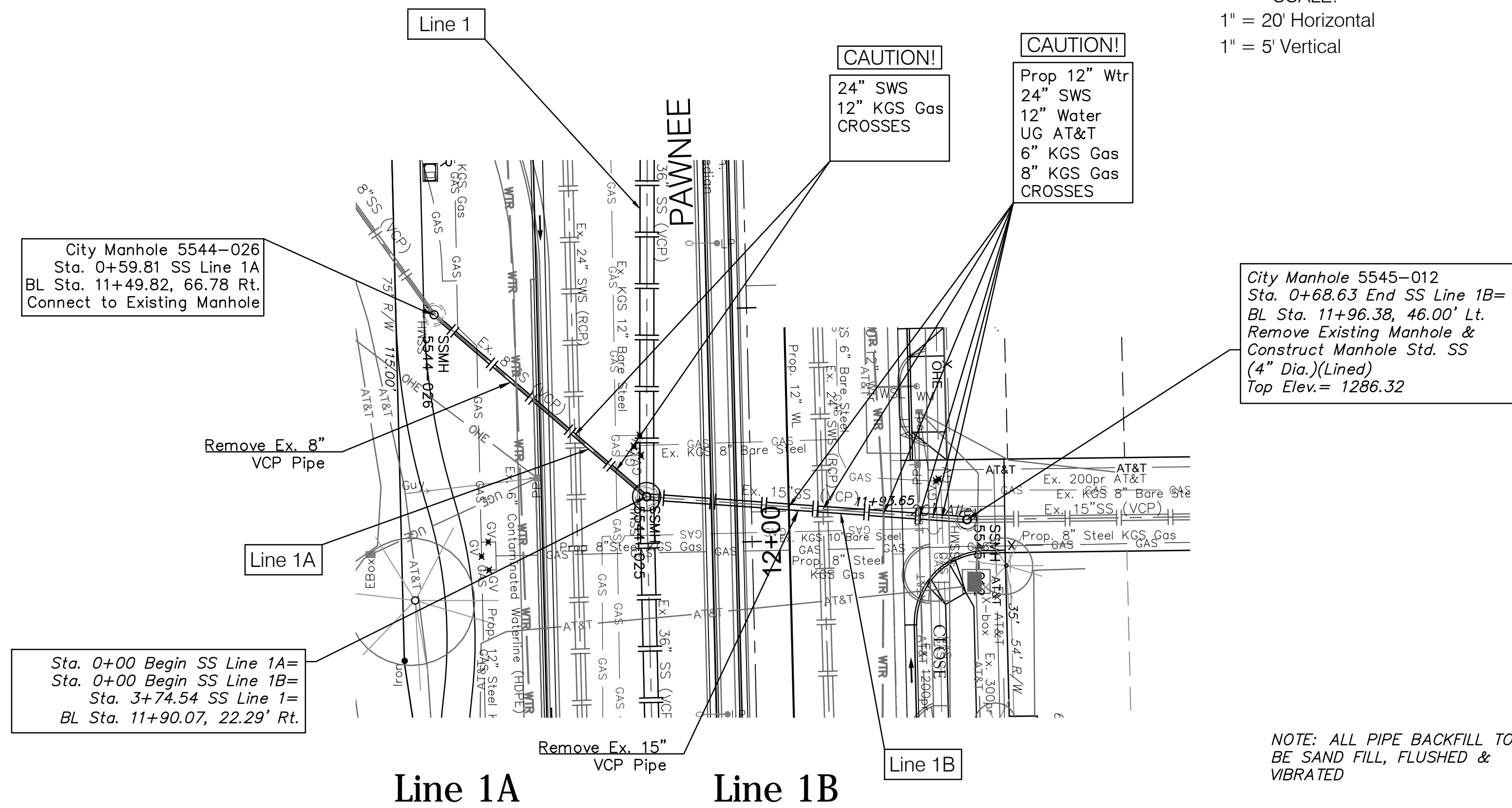
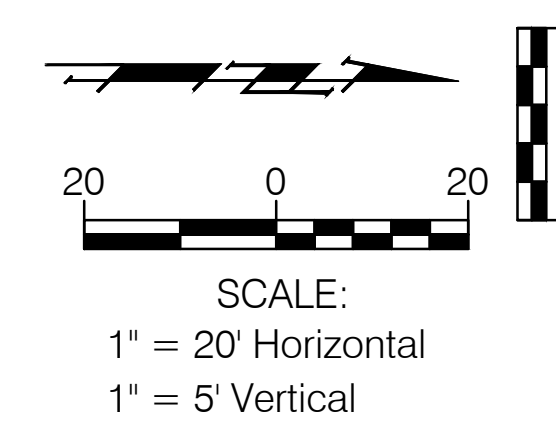


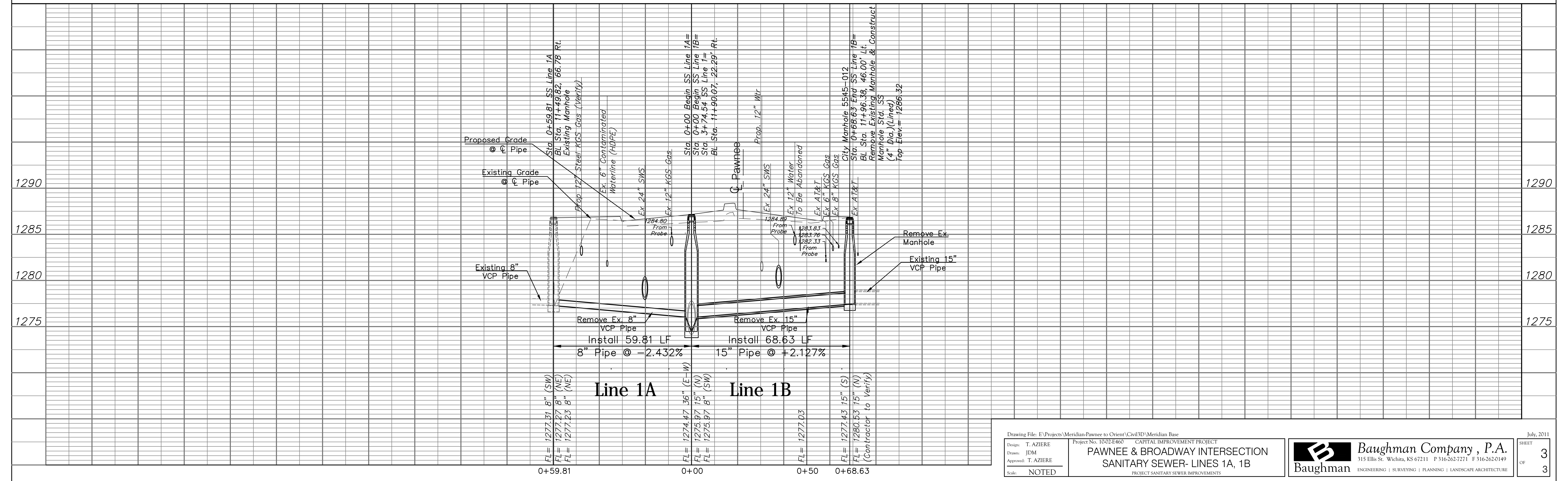
BM#2 - C.O.W. Disc located on the northwest corner of Pawnee & Broadway (52' north of CL Pawnee, 40' west of CL Broadway)
Elev. = 1286.28 (NAVD 88)

BM#4 - "x" Cut on walk 0.1' south & 0.2' east of back of walks north & east at the northeast corner of Pawnee & Topeka
Elev. = 1286.99 (NAVD 88)

FHWA REGION NO.	STATE	PROJECT NO.	FISCAL YEAR	SHEET NO.	TOTAL SHEETS
7	KANSAS	468-8466	2011	3	3



NOTE: ALL PIPE BACKFILL TO BE SAND FILL, FLUSHED & VIBRATED



Drawing File: E:\Projects\Meridian-Pawnee to Orient\Civil3D\Meridian Base

Design: T. AZIERE
Drawn: JDM
Approved: T. AZIERE
Scale: NOTED

Project No. 1002-E460 CAPITAL IMPROVEMENT PROJECT

**PAWNEE & BROADWAY INTERSECTION
SANITARY SEWER- LINES 1A, 1B**

PROJECT SANITARY SEWER IMPROVEMENTS

Baughman Company, P.A.
315 Ellis St. Wichita, KS 67211 P 316-262-7271 F 316-262-0149
ENGINEERING | SURVEYING | PLANNING | LANDSCAPE ARCHITECTURE

July, 2011

SHEET 3 OF 3