

STORM WATER SEWER NO. 662

TO SERVE

HAMPTON SQUARE SECOND ADDITION

PROJECT NO. 468-84773

THE CITY OF WICHITA, KANSAS
JAMES L. ARMOUR, P.E. - CITY ENGINEER

OCA NO. 751500

GENERAL NOTES

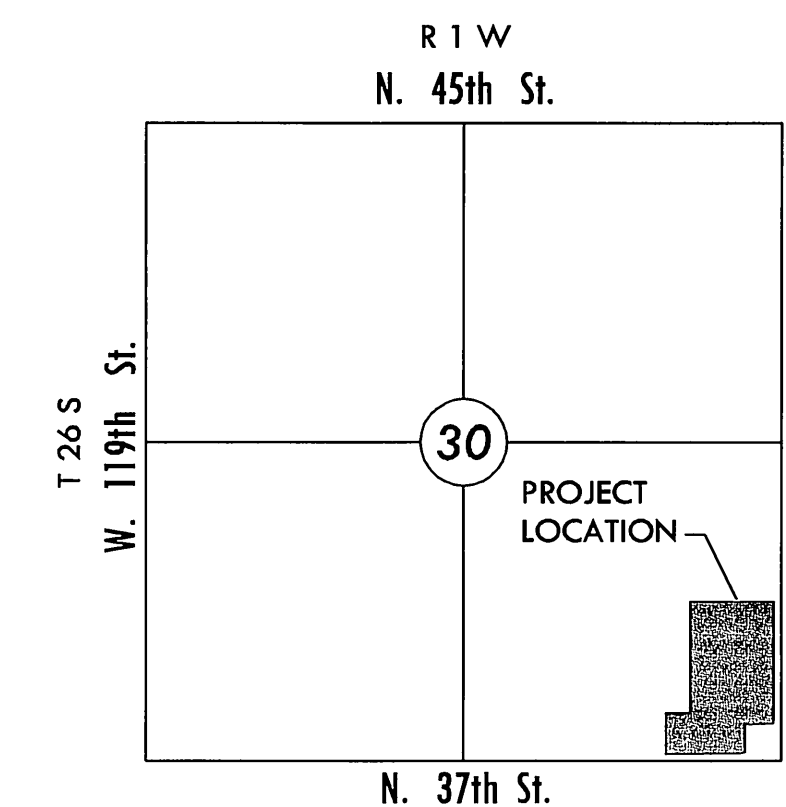
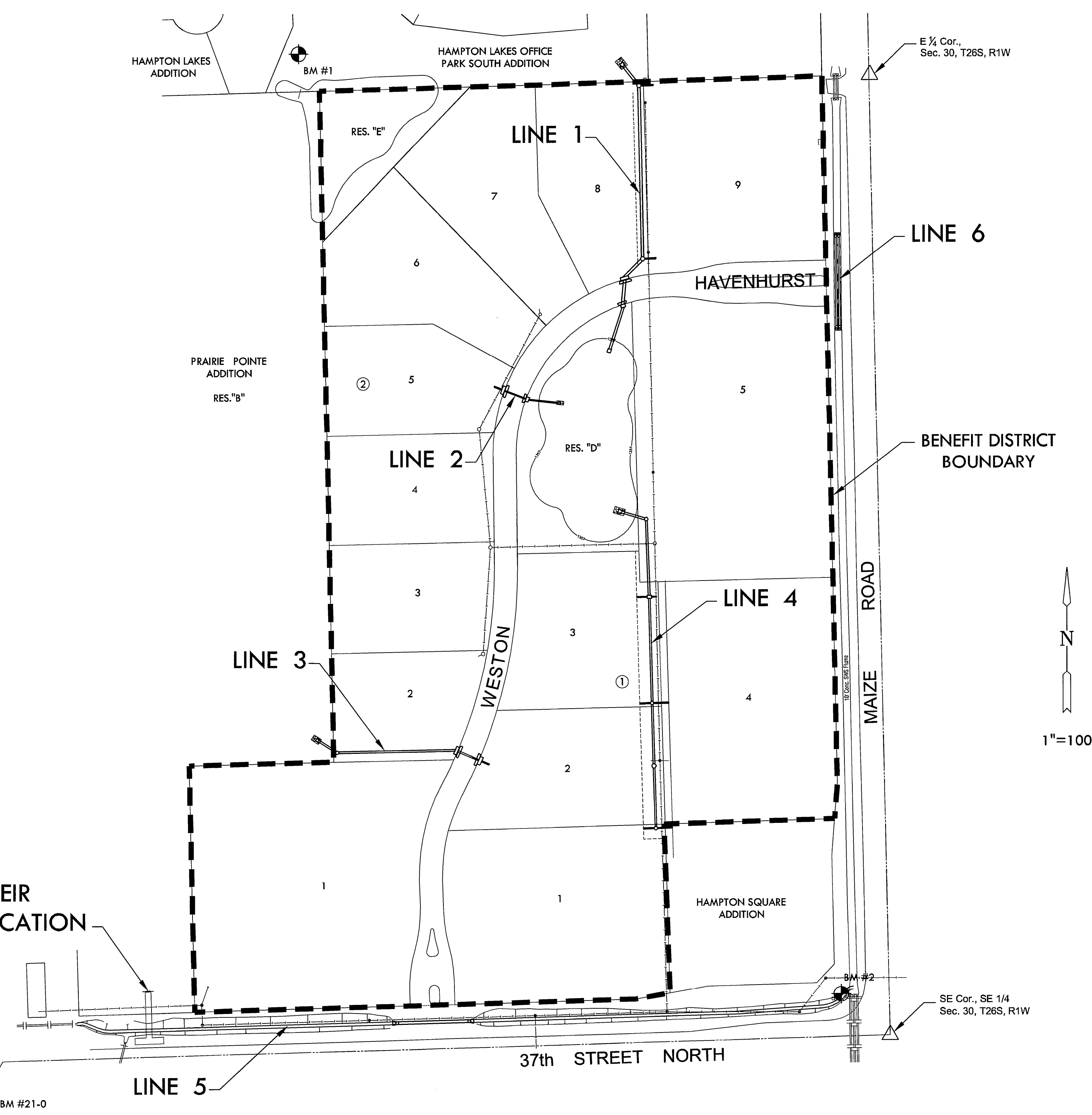
- UNLESS SHOWN OR OTHERWISE STATED ON THESE DRAWINGS, MATERIALS AND CONSTRUCTION SHALL BE IN ACCORDANCE WITH THE CITY OF WICHITA STANDARD SPECIFICATIONS.
- THE TOPS OF INLETS AND MANHOLES AS NOTED ON THE PLANS MAY VARY SO AS TO MEET PROPOSED TOP OF CURB ELEVATIONS OR PAVEMENT ELEVATIONS. THE FIELD ENGINEER SHALL LOCATE INLETS AND MANHOLES WITH REFERENCE TO PROPOSED PAVING PLANS OF THE PERTINENT STREETS.
- ALL CONCRETE SHALL BE STANDARD PAVING MIX UNLESS OTHERWISE NOTED.
- THE CONTRACTOR SHALL BE RESPONSIBLE FOR PRESERVING PROPERTY IRONS. THE CONTRACTOR SHALL BE REQUIRED TO RE-ESTABLISH ANY PROPERTY IRONS WHICH ARE DAMAGED OR DESTROYED BY HIS CONSTRUCTION OPERATIONS. SUCH IRONS SHALL BE RE-ESTABLISHED BY A LICENSED LAND SURVEYOR IN ACCORDANCE WITH STATE LAWS.
- TREES TO BE REMOVED ARE MARKED . ALL TREES WHICH IN THE OPINION OF THE FIELD ENGINEER CAN BE SAVED, SHALL BE SAVED.
- CONTRACTOR SHALL NOTIFY UTILITY COMPANIES OF CONSTRUCTION SCHEDULING.
- EXISTING UTILITIES AND THEIR LOCATIONS, AS SHOWN ON THE PLANS REPRESENT THE BEST INFORMATION OBTAINABLE FOR DESIGN. LOCATION INFORMATION HAS BEEN OBTAINED FROM THE VARIOUS COMPANIES AND IS EITHER FROM COMPANY UTILITY DRAWINGS OR COMPANY PROVIDED FIELD LOCATIONS. THE PLAN LOCATIONS SHOWN ARE NOT GUARANTEED. ADDITIONAL EXISTING UTILITIES MAY ALSO BE ENCOUNTERED.
- CONTRACTOR WILL BE REQUIRED TO PROVIDE A MINIMUM ADVANCE NOTICE OF SEVENTY-TWO (72) HOURS TO UTILITY COMPANIES TO STARTING ANY EXCAVATION AS FOLLOWS:

KANSAS ONE-CALL 800-344-7233
OR 687-2470 (LOCAL WICHITA)

THE CONTRACTOR MUST NOTIFY THE FOLLOWING IN CASE OF EMERGENCY:

COX COMMUNICATIONS (CABLE)	262-0661
WESTAR (ELECTRIC)	261-4512
KANSAS GAS SERVICE (GAS)	832-3101
SBC (TELEPHONE)	800-870-8390
CITY OF WICHITA WATER & SEWER	262-6000
BLACK HILLS ENERGY (GAS)	800-303-0357

- RUBBLE FROM THE REMOVAL OF MISCELLANEOUS STRUCTURES AND EXCESS EXCAVATION WHICH IS TO BE WASTED SHALL BE DISPOSED OF ON SITES TO BE PROVIDED BY THE CONTRACTOR. THESE SITES SHALL BE APPROVED BY THE ENGINEER AS TO SUITABILITY, APPEARANCE AND SITE LOCATION. LOCATIONS THAT, IN THE OPINION OF THE ENGINEER, WILL LEAVE AN UNSIGHTLY APPEARANCE WILL NOT BE APPROVED. ALL DISPOSAL SITES MUST BE APPROVED BY THE KANSAS DEPARTMENT OF HEALTH AND ENVIRONMENT. MATERIAL EITHER STOCKPILED OR DISPOSED OF IN A FLOOD PLAIN WOULD REQUIRE A KANSAS STATE BOARD OF AGRICULTURE PERMIT. ANY MATERIAL DUMPED IN WATERS OF THE UNITED STATES OR WETLANDS IS SUBJECT TO U.S. CORPS OF ENGINEERS PERMITTING REGULATIONS. ANY MATERIAL BURIED OR STOCKPILED BEYOND APPROVED CONSTRUCTION LIMITS WOULD REQUIRE ADDITIONAL ARCHAEOLOGICAL INVESTIGATIONS UNLESS BURIED IN A PREVIOUSLY APPROVED BORROW LOCATION.
- CONTRACTOR SHALL RESEED AND MULCH ALL DISTURBED AREAS. COST SHALL BE CONSIDERED SUBSIDIARY TO SITE RESTORATION.
- DEVELOPER FOR THIS PROJECT IS:
HAMPTON SQUARE, LLC
7926 WEST 21st STREET
WICHITA, KANSAS 67205
MARVIN L. SCHELLENBERG, MANAGER
PHONE NUMBER



VICINITY MAP

INDEX TO DRAWINGS

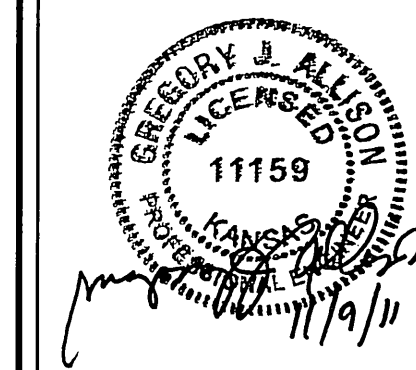
SHEET NO.	DESCRIPTION
1	TITLE SHEET
2-7	DETAILS
8-9	GRADING PLAN
10	LINE 1
11	LINE 2
12	LINE 3 & 4
13-14	LINE 5
15	LINE 5 & 6
16	WEIR MODIFICATION
17-21	DITCH CROSS SECTIONS
22	BUBBLE MAP
23	EROSION CONTROL PLAN
24-28	BMP DETAILS
29	LOT GRADING PLAN
30	PLAT

BENCHMARKS

BM#21-0	CHISELED SQUARE ON CONCRETE BASE OF BRICK FENCE POST ON SOUTH SIDE OF 37TH ST. 1573 FEET WEST OF MAIZE RD. ELEV. = 1356.01 NAVD 88
BM#1	CHISELED SQUARE ON TOP OF CURB AT SOUTH END OF ENTRANCE ISLAND AT HAMPTON LAKES ST. AND MANCHESTER ST. ELEV. = 1357.69 NAVD 88
BM#2	CHISELED SQUARE AT NORTHWEST CORNER OF PAD OF TRAFFIC SIGNAL MANHOLE AT NORTHWEST CORNER OF MAIZE RD. AND 37TH ST. ELEV. = 1354.49 NAVD 88

MKEC
ENGINEERING
CONSULTANTS, INC.

411 N. WEBB ROAD
WICHITA, KS. 67206
316-684-9600



STORM WATER SEWER NO. 662

HAMPTON SQUARE SECOND

TITLE SHEET

SHEET TITLE
468-84773
PROJECT NUMBER

DFL | KKL | GJA
DESIGNED | DRAWN | CHECKED

ISSUED
November 2011

REVISED

SHEET NO.

1 of 30