

MAIZE ROAD

HAVENHURST

WESTON

37TH STREET

Reserve "D"
NP=1354.4
100-YR=1356.5

Res. "C"
See Detail

Res. "B"
See Detail

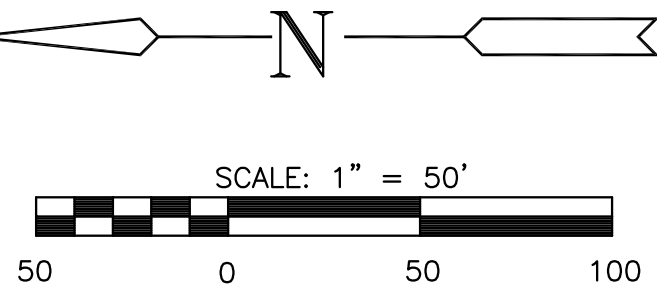
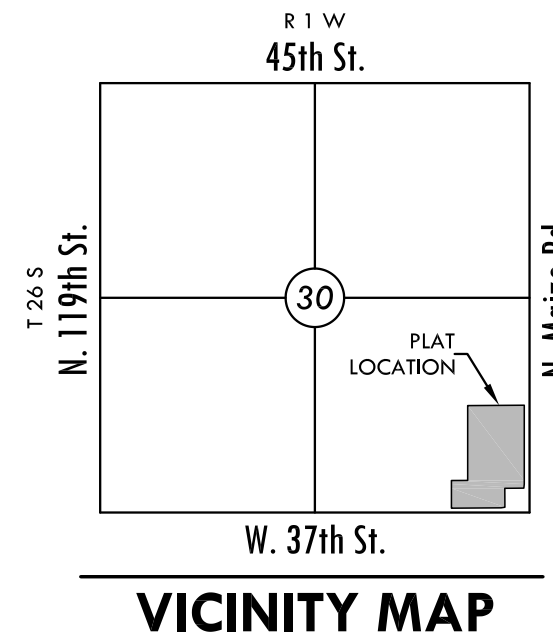
Res. "E"

PRAIRIE POINTE
HAMPTON LAKES
POND
BOTTOM=1350.0
OR BELOW
NORMAL
POOL=1354.4
100-YR=1356.5

MINIMUM PAD ELEVATIONS
LOWEST OPENINGS

LOTS (inclusive)	BLOCK	ELEVATION NAVD88
1 - 7	3	1360.1

- LEGEND**
- ⊙ - CONIFEROUS TREE
 - ⊙ - DECIDUOUS TREE
 - ⊙ - SIGN
 - ⊙ - POWER POLE
 - ⊙ - ELECTRIC BOX
 - ⊙ - LIGHT POLE
 - ⊙ - FIRE HYDRANT
 - ⊙ - WATER VALVE
 - ⊙ - WATER METER
 - ⊙ - SECTION CORNER
 - ⊙ - BENCHMARK
 - - - - - EASEMENT
 - - - - - BUILDING SETBACK
 - - - - - FENCE
 - - - - - STORM SEWER PIPE
 - - - - - WATER LINE
 - - - - - SANITARY SEWER LINE
 - - - - - GAS LINE
 - - - - - GAS PIPELINE
 - - - - - TELEPHONE LINE
 - - - - - UNDERGROUND ELEC.
 - - - - - OVERHEAD ELECTRIC
 - - - - - FIBER OPTIC CABLE
 - ⊙ - SPOT ELEVATIONS



MKEC
ENGINEERING
CONSULTANTS, INC.
411 N. WEBB ROAD
WICHITA, KS. 67206
316 - 684 - 9600

PRELIMINARY
NOT FOR
CONSTRUCTION

HAMPTON SQUARE 2ND
LOT GRADING PLAN

DATE
November 11

REVISED

DESIGN BY
KLA

DRAWN BY
CMJ

CHECKED BY
GJA

SHEET NUMBER
29 of 30

J:\Projects\2010\1001010582_Premier Hampton Square 2nd\5-Civil\CAD\Drainage\Drawing\10582_LGP.dwg