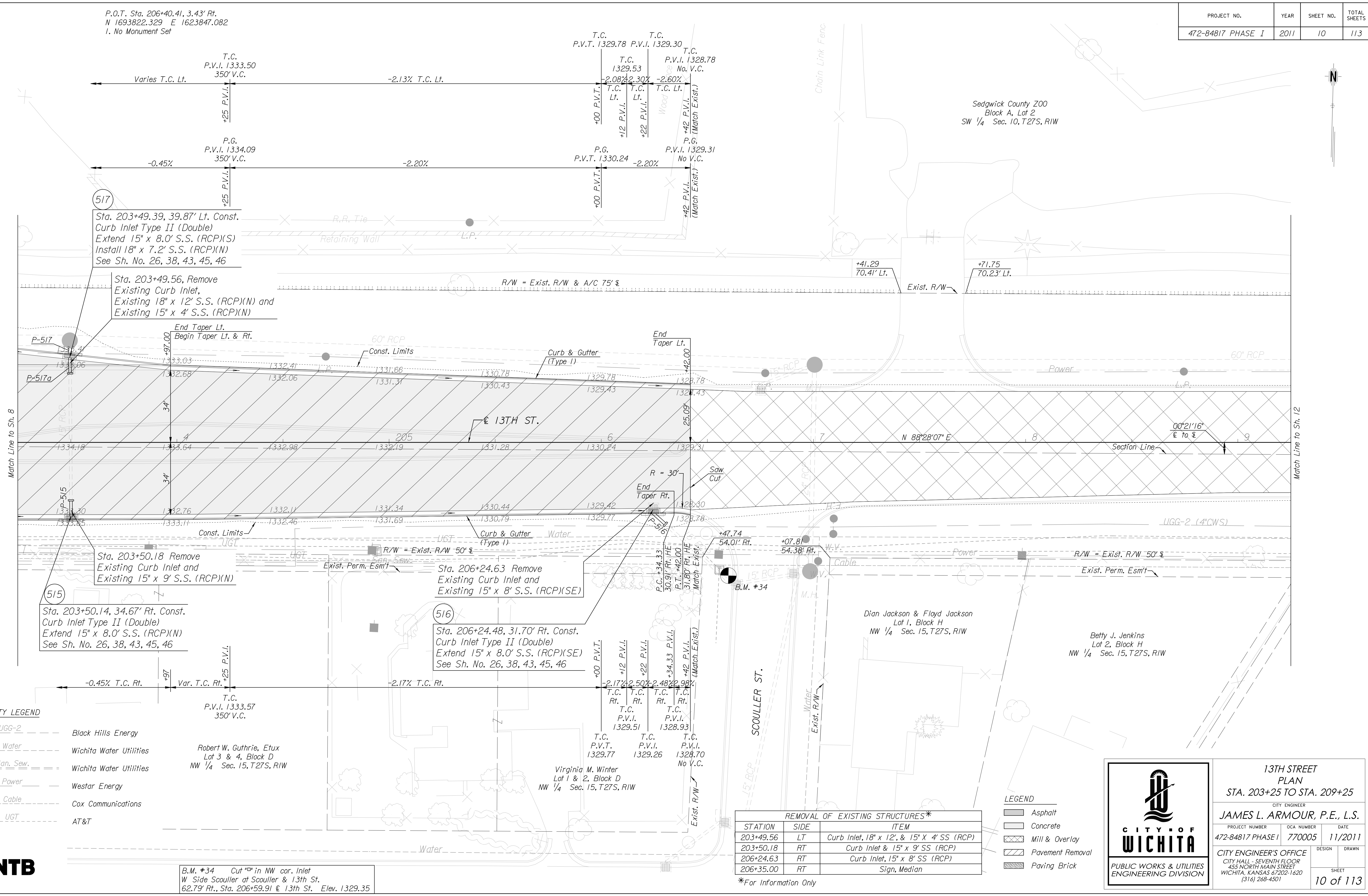


P.O.T. Sta. 206+40.41, 3.43' Rt.  
 N 1693822.329 E 1623847.082  
 I. No Monument Set



517  
 Sta. 203+49.39, 39.87' Lt. Const.  
 Curb Inlet Type II (Double)  
 Extend 15" x 8.0' S.S. (RCP)(S)  
 Install 18" x 7.2' S.S. (RCP)(N)  
 See Sh. No. 26, 38, 43, 45, 46

Sta. 203+49.56, Remove  
 Existing Curb Inlet,  
 Existing 18" x 12' S.S. (RCP)(N) and  
 Existing 15" x 4' S.S. (RCP)(N)

515  
 Sta. 203+50.18 Remove  
 Existing Curb Inlet and  
 Existing 15" x 9' S.S. (RCP)(N)

Sta. 203+50.14, 34.67' Rt. Const.  
 Curb Inlet Type II (Double)  
 Extend 15" x 8.0' S.S. (RCP)(N)  
 See Sh. No. 26, 38, 43, 45, 46

516  
 Sta. 206+24.63 Remove  
 Existing Curb Inlet and  
 Existing 15" x 8' S.S. (RCP)(SE)

Sta. 206+24.48, 31.70' Rt. Const.  
 Curb Inlet Type II (Double)  
 Extend 15" x 8.0' S.S. (RCP)(SE)  
 See Sh. No. 26, 38, 43, 45, 46

B.M. #34 Cut "D" in NW cor. Inlet  
 W Side Scouller at Scouller & 13th St.  
 62.79' Rt., Sta. 206+59.91 @ 13th St. Elev. 1329.35

**UTILITY LEGEND**

- UGG-2 Black Hills Energy
- Water Wichita Water Utilities
- San. Sew. Wichita Water Utilities
- Power Westar Energy
- Cable Cox Communications
- UGT AT&T

Robert W. Guthrie, Etux  
 Lot 3 & 4, Block D  
 NW 1/4 Sec. 15, T27S, R1W

Virginia M. Winter  
 Lot 1 & 2, Block D  
 NW 1/4 Sec. 15, T27S, R1W

Dian Jackson & Floyd Jackson  
 Lot 1, Block H  
 NW 1/4 Sec. 15, T27S, R1W

Betty J. Jenkins  
 Lot 2, Block H  
 NW 1/4 Sec. 15, T27S, R1W

REMOVAL OF EXISTING STRUCTURES*		
STATION	SIDE	ITEM
203+49.56	LT	Curb Inlet, 18" x 12', & 15" x 4' SS (RCP)
203+50.18	RT	Curb Inlet & 15" x 9' SS (RCP)
206+24.63	RT	Curb Inlet, 15" x 8' SS (RCP)
206+35.00	RT	Sign, Median

\*For Information Only

**LEGEND**

- Asphalt
- Concrete
- Mill & Overlay
- Pavement Removal
- Paving Brick



**13TH STREET PLAN**  
 STA. 203+25 TO STA. 209+25

CITY ENGINEER  
**JAMES L. ARMOUR, P.E., L.S.**

PROJECT NUMBER	OCA NUMBER	DATE
472-84817 PHASE I	770005	11/2011

CITY ENGINEER'S OFFICE  
 CITY HALL - SEVENTH FLOOR  
 455 NORTH MAIN STREET  
 WICHITA, KANSAS 67202-1620  
 (316) 268-4501

DESIGN DRAWN SHEET  
 10 of 113

Plotted on: Thursday September 29, 2011 04:27 PM  
 Plot Queue: \\ovp\00\PL\BWLIP  
 Plot Scale: 20.000000:000000 Pen Table: \\ovp\00\Jobs\4809\Highway\Library\lib\pen\CC-22x35.pen  
 Design Filename: \\ovp\00\Jobs\4809\Highway\CD\Plan\13th\Plan.dwg

