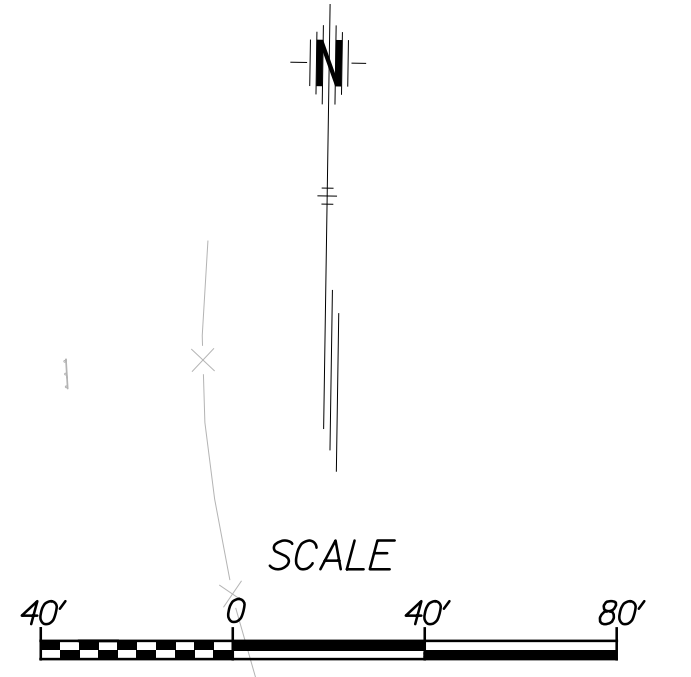
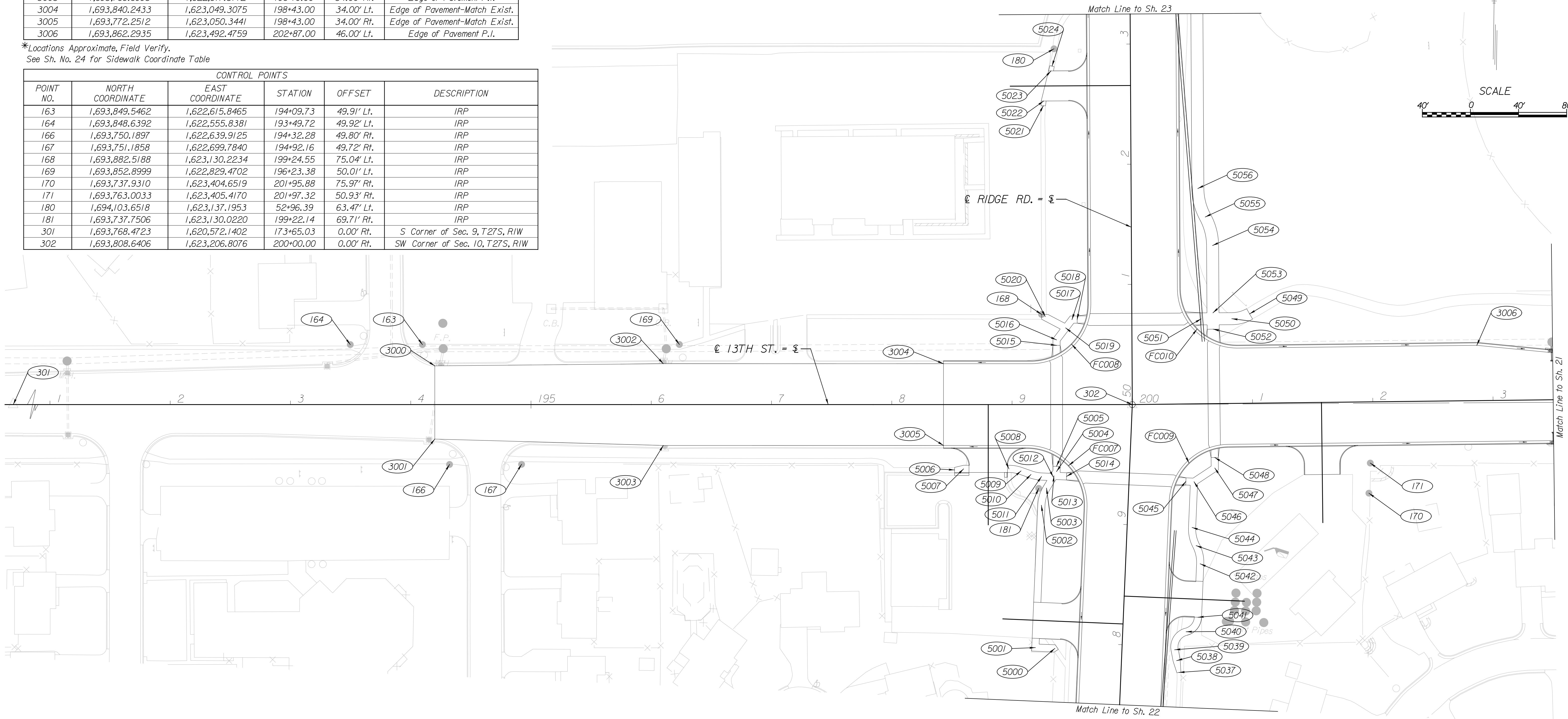


POINT NO.	NORTH COORDINATE	EAST COORDINATE	STATION	OFFSET	DESCRIPTION
*3000	1,693,831.9952	1,622,626.3841	194+20.00	32.20' Lt.	Edge of Pavement P.I.
*3001	1,693,771.1022	1,622,627.3125	194+20.00	28.70' Rt.	Edge of Pavement P.I.
*3002	1,693,836.6914	1,622,816.3346	196+10.00	34.00' Lt.	Edge of Pavement P.I.
*3003	1,693,768.6993	1,622,817.3712	196+10.00	34.00' Rt.	Edge of Pavement P.I.
3004	1,693,840.2433	1,623,049.3075	198+43.00	34.00' Lt.	Edge of Pavement-Match Exist.
3005	1,693,772.2512	1,623,050.3441	198+43.00	34.00' Rt.	Edge of Pavement-Match Exist.
3006	1,693,862.2935	1,623,492.4759	202+87.00	46.00' Lt.	Edge of Pavement P.I.

*Locations Approximate, Field Verify.
See Sh. No. 24 for Sidewalk Coordinate Table

POINT NO.	NORTH COORDINATE	EAST COORDINATE	STATION	OFFSET	DESCRIPTION
163	1,693,849.5462	1,622,615.8465	194+09.73	49.91' Lt.	IRP
164	1,693,848.6392	1,622,555.8381	193+49.72	49.92' Lt.	IRP
166	1,693,750.1897	1,622,639.9125	194+32.28	49.80' Rt.	IRP
167	1,693,751.1858	1,622,699.7840	194+92.16	49.72' Rt.	IRP
168	1,693,882.5188	1,623,130.2234	199+24.55	75.04' Lt.	IRP
169	1,693,852.8999	1,622,829.4702	196+23.38	50.01' Lt.	IRP
170	1,693,737.9310	1,623,404.6519	201+95.88	75.97' Rt.	IRP
171	1,693,763.0033	1,623,405.4170	201+97.32	50.93' Rt.	IRP
180	1,694,103.6518	1,623,137.1953	52+96.39	63.47' Lt.	IRP
181	1,693,737.7506	1,623,130.0220	199+22.14	69.71' Rt.	IRP
301	1,693,768.4723	1,620,572.1402	173+65.03	0.00' Rt.	S Corner of Sec. 9, T27S, R1W
302	1,693,808.6406	1,623,206.8076	200+00.00	0.00' Rt.	SW Corner of Sec. 10, T27S, R1W



NO.	Δ	R	T	L	E	P.C. COORDINATES		P.I. COORDINATES		P.T. COORDINATES		C.C. COORDINATES	
						NORTH	EAST	NORTH	EAST	NORTH	EAST	NORTH	EAST
FC007	92°25'08" Rt.	48.00'	50.07'	77.42'	21.36'	1,693,771.3090	1,623,119.7431	1,693,772.0723	1,623,169.8078	1,693,722.0200	1,623,168.4573	1,693,723.3146	1,623,120.4748
FC008	90°19'03" Lt.	48.00'	48.27'	75.66'	20.07'	1,693,843.3488	1,623,121.8018	1,693,844.0846	1,623,170.0630	1,693,892.3409	1,623,169.0597	1,693,891.3432	1,623,121.0701
FC009	86°55'23" Rt.	48.00'	45.49'	72.82'	18.13'	1,693,728.0925	1,623,240.6474	1,693,773.5651	1,623,241.8743	1,693,774.7807	1,623,287.3472	1,693,726.7979	1,623,288.6299
FC010	90°20'25" Lt.	48.00'	48.29'	75.68'	20.08'	1,693,905.9755	1,623,244.7927	1,693,857.7000	1,623,245.7963	1,693,858.9903	1,623,294.0650	1,693,906.9732	1,623,292.7823

FC denotes face of curb

CITY OF WICHITA
PUBLIC WORKS & UTILITIES
ENGINEERING DIVISION

**13TH STREET
COORDINATE GEOMETRY
PLAN**

CITY ENGINEER
JAMES L. ARMOUR, P.E., L.S.

PROJECT NUMBER	OCA NUMBER	DATE
472-84817 PHASE I	770005	11/2011

CITY ENGINEER'S OFFICE
CITY HALL - SEVENTH FLOOR
455 NORTH MAIN STREET
WICHITA, KANSAS 67202-1620
(316) 268-4501

DESIGN	DRAWN
SHEET	
20 of 113	

Plotted on: Thursday September 29, 2011 04:28 PM
 mbechtel
 Plot Queue: \\ovpww00\pl\TBWLP
 Plot Scale: 40,000.0000000000 Pen Table: \\ovpww00\jobs\4809\13th\CD\Detail\13th\Coordinate-geometry.dgn
 Design Filename: \\ovpww00\jobs\4809\13th\CD\Detail\13th\Coordinate-geometry.dgn



\\ovpww00\jobs\4809\13th\CD\Detail\13th\Coordinate-geometry.dgn