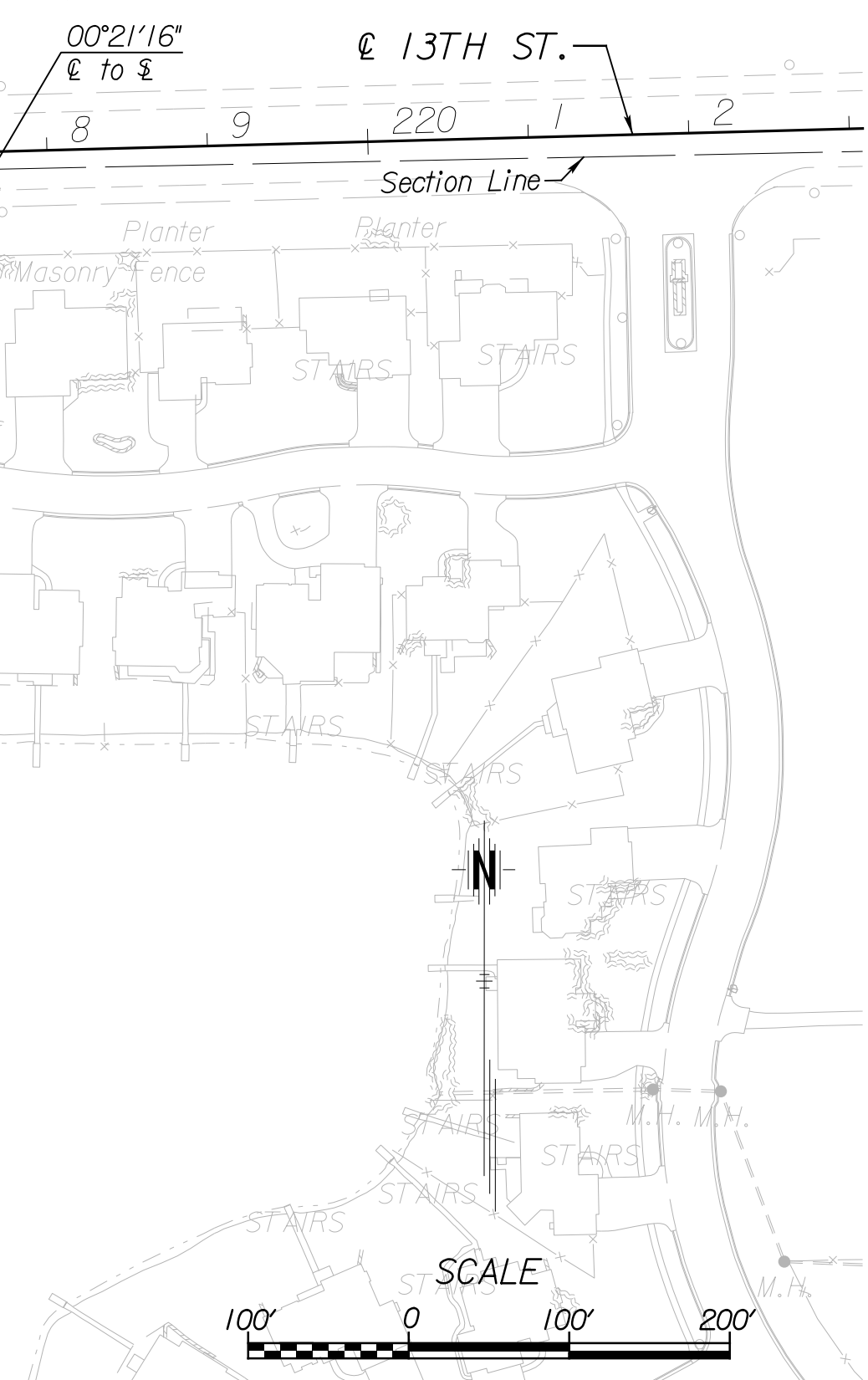


13TH ST. CENTERLINE DATA

POINT	STATION	NORTHING	EASTING	ELEMENT	LENGTH	BEARING
P.O.B.	173+65.03	1693768.4723	1620572.1402			
P.I.	200+00.00	1693808.6406	1623206.8076	STRAIGHT	2634.97	N 89°07'35.52" E
P.O.E.	230+00.15	1693888.8123	1626205.8862	STRAIGHT	3000.15	N 88°28'07.42" E


RIDGE ST. CENTERLINE DATA

POINT	STATION	NORTHING	EASTING	ELEMENT	LENGTH	BEARING
P.O.B.	23+81.94	1691191.5331	1623136.1938			
P.I.	50+00.00	1693808.6406	1623206.8076	STRAIGHT	2618.06	N 1°32'44.01" E
P.O.E.	76+21.08	1696429.1556	1623152.3280	STRAIGHT	2621.08	N 1°11'27.56" W



Plotted on: Tuesday, September 27, 2011 09:33 AM
 Plot Queue: \\ovp\00\PR\TBWLP
 Plot Scale: 100.000000d\000000 Pen Tables: \\ovp\00\Jobs\4809\Common\Highway\Library\lob\pen\CC-28x36.pen
 Design Filename: \\ovp\00\Jobs\4809\Ridge\CD\Detail\Ridge.dwg





CITY OF WICHITA
PUBLIC WORKS & UTILITIES
ENGINEERING DIVISION

ALIGNMENT DETAIL SHEET

CITY ENGINEER
JAMES L. ARMOUR, P.E., L.S.

PROJECT NUMBER 472-84817 PHASE I	OCA NUMBER 770005	DATE 11/2011
-------------------------------------	----------------------	-----------------

CITY ENGINEER'S OFFICE
CITY HALL - SEVENTH FLOOR
455 NORTH MAIN STREET
WICHITA, KANSAS 67202-1620
(316) 268-4501

DESIGN DRAWN
SHEET
3 of 113