

IN FILL

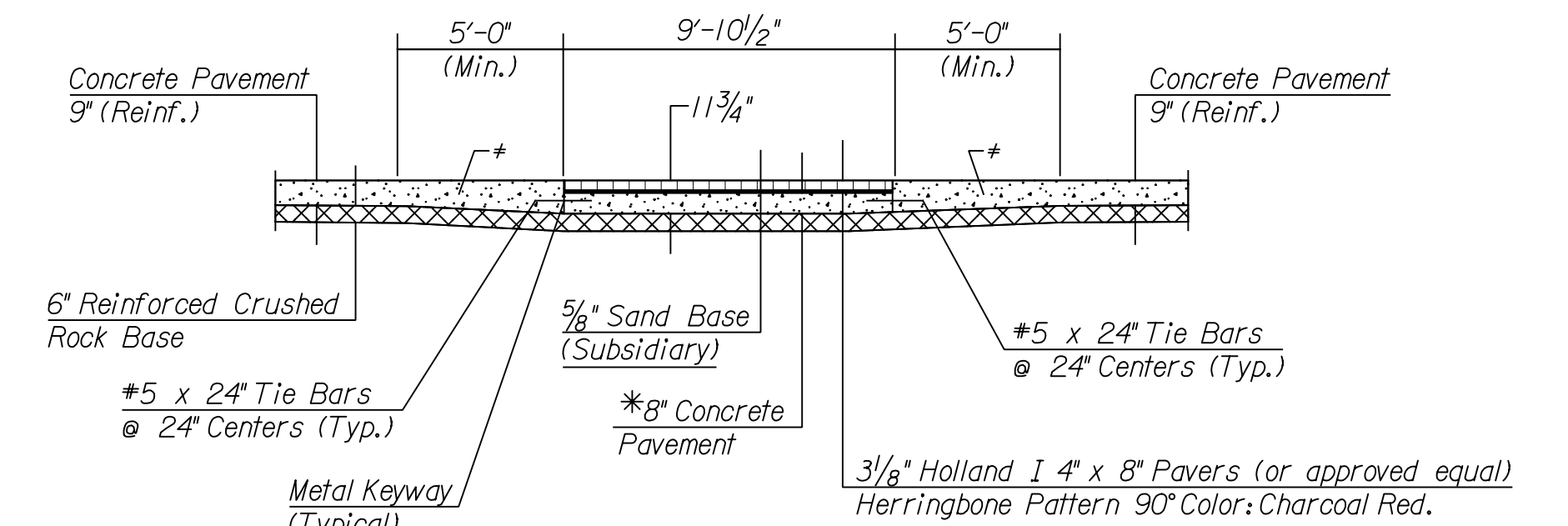
COMPACTION DIAGRAM

IN CUT

Note: All embankment, including side roads and driveways shall be compacted

■ If high plasticity soil is encountered near the proposed subgrade (LL = 45 to 53), over excavate the upper 6 inches of the subgrade and replace with granular fill. This work will be Subsidiary to "Fill, Compacted (95% Density)".

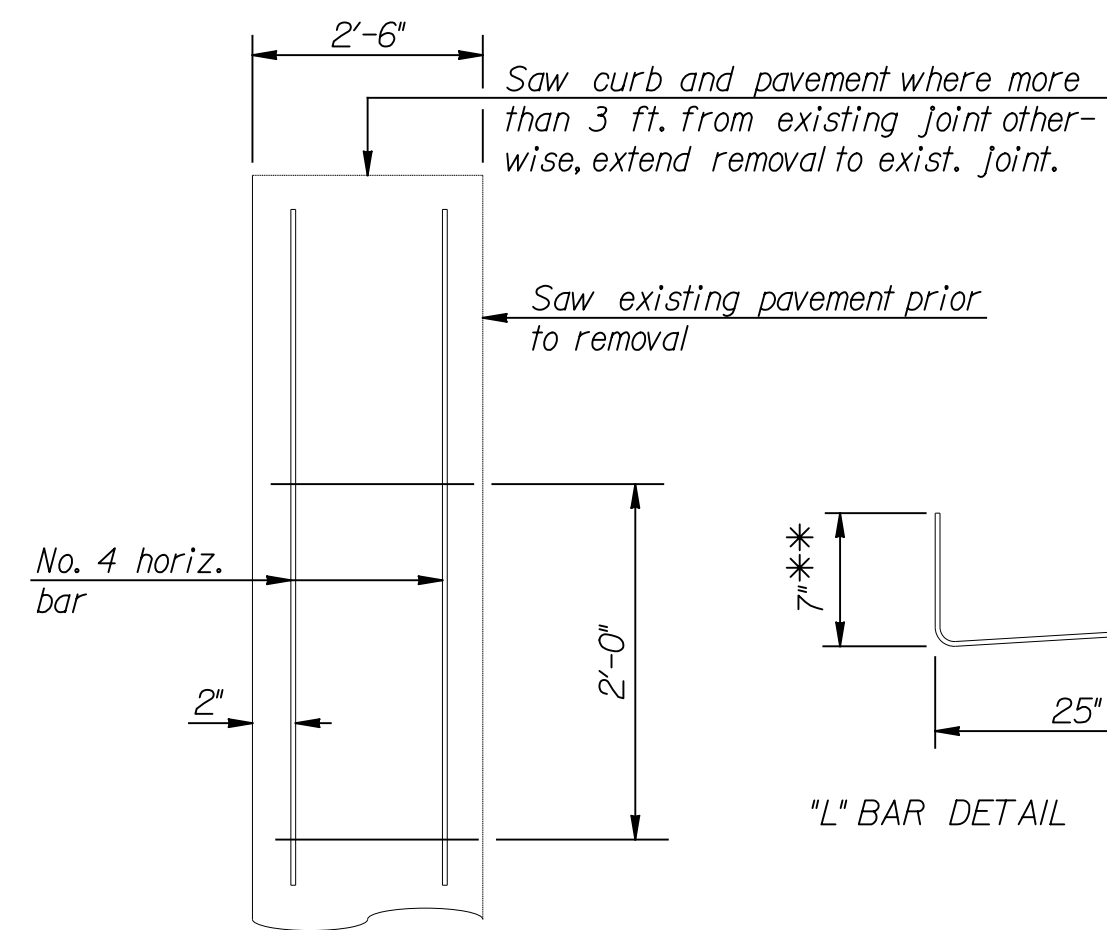
□ The top 6" of all areas to be seeded shall be topsoiled with material suitable for growth of vegetation. Thru cuts, over excavate 6" for placement of topsoil. This work shall be Subsidiary to other earthwork items. In fill, the top 6" of embankment shall be topsoil. Quantities for this work are included in the contract bid items for earthwork. No measurement or payment will be made for material required to replace material excavated during stripping operations.



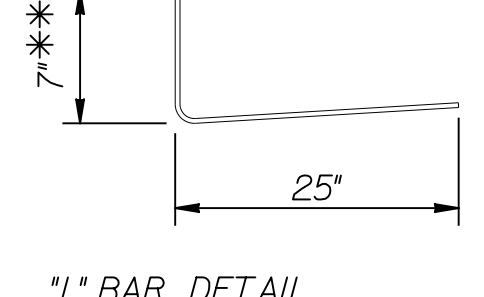
PAVING BRICK (CROSSWALK) DETAILS

*8" Concrete Pavement to be paid as "Concrete Pavement 9" (Reinf.)."

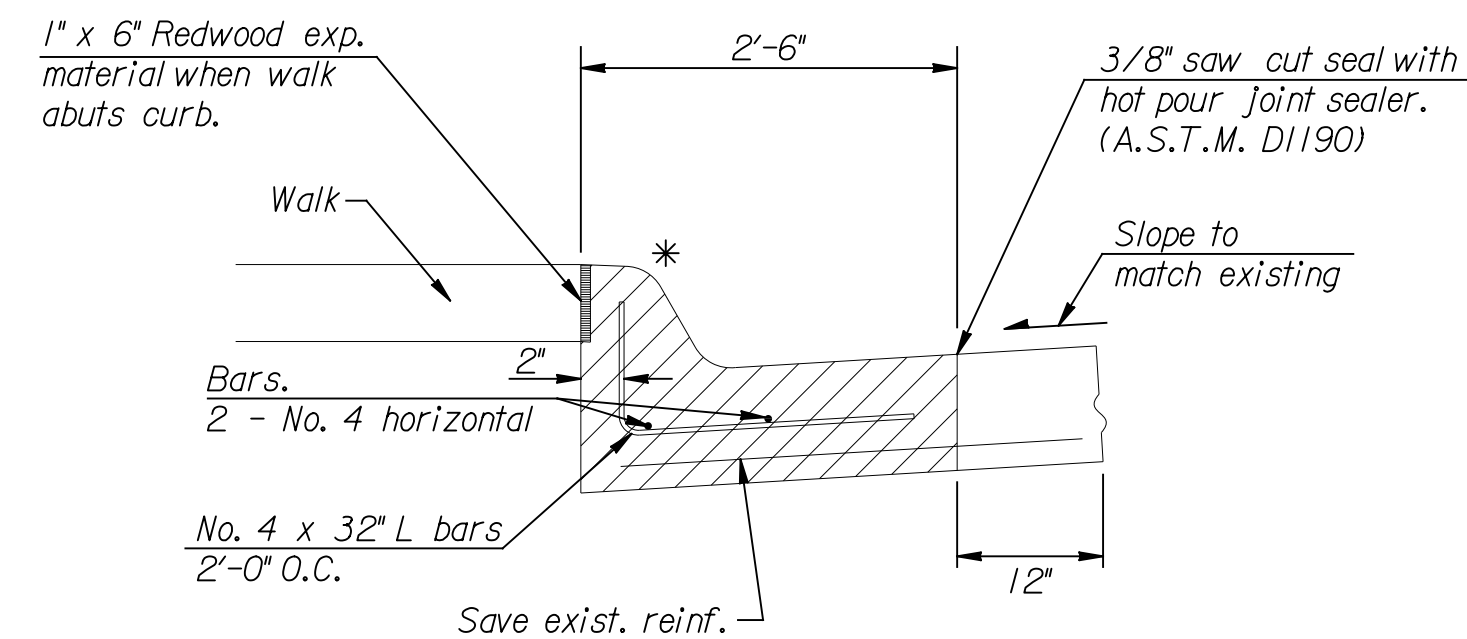
+ Additional Pavement Thickness shall be Subsidiary to "Concrete Pavement 9" (Reinf.)."



PLAN VIEW



"L" BAR DETAIL



SECTION VIEW

If no existing reinf., dowel no. 4 x 2' bars on 2'-0" centers 12" into existing pavement or dowel extended length L bars 7" x 40"

REMOVING & RECONSTRUCTING CURB & GUTTER

Note: Paid for as linear feet "Concrete Curb & Gutter, Type I (6" & 1-1/2")
 *Transition curb shape linearly to match abutting curb/pavement section
 **L* bar height may vary with curb shape
 Detail to be used near entrance at Sta. 198+80.20, See Sh. 8 for plan locations.

CRUSHED ROCK GRADATION REQUIREMENTS

PERCENT OF AGGREGATE RETAINED

2-1/2"	0
3/4"	20-60
#4	50-80
#40	80-94
#200	90-98

Rock quality shall conform to the requirements specified by the KDOT 2007 Edition Standard Specification Subsection 1102 for Durability Class I.

Plotted on: Monday November 07, 2011 02:56 PM
 mbechtel
 Plot Queue: \\ovpwp00\p1\TBWLP
 Plot Scale: 10.000000:0.000000 Pen Table: \\ovpwp00\jobs\4809\Highway\Library\lob\pen\CC-22x35.pen
 Design Filename: \\ovpwp00\jobs\4809\Highway\CD\Detail\Stdg_Typical.dgn



TYPICAL DETAILS		
CITY ENGINEER JAMES L. ARMOUR, P.E., L.S.		
PROJECT NUMBER 472-84817 PHASE I	OCA NUMBER 770005	DATE 11/2011
CITY ENGINEER'S OFFICE CITY HALL - SEVENTH FLOOR 455 NORTH MAIN STREET WICHITA, KANSAS 67202-1620 (316) 268-4501		DESIGN DRAWN SHEET 5 of 113