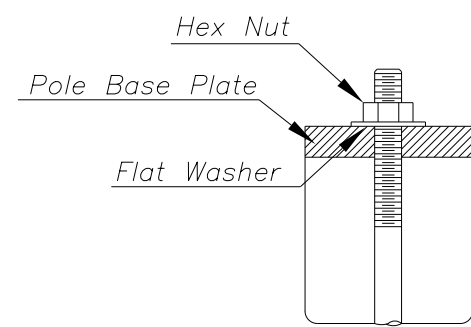
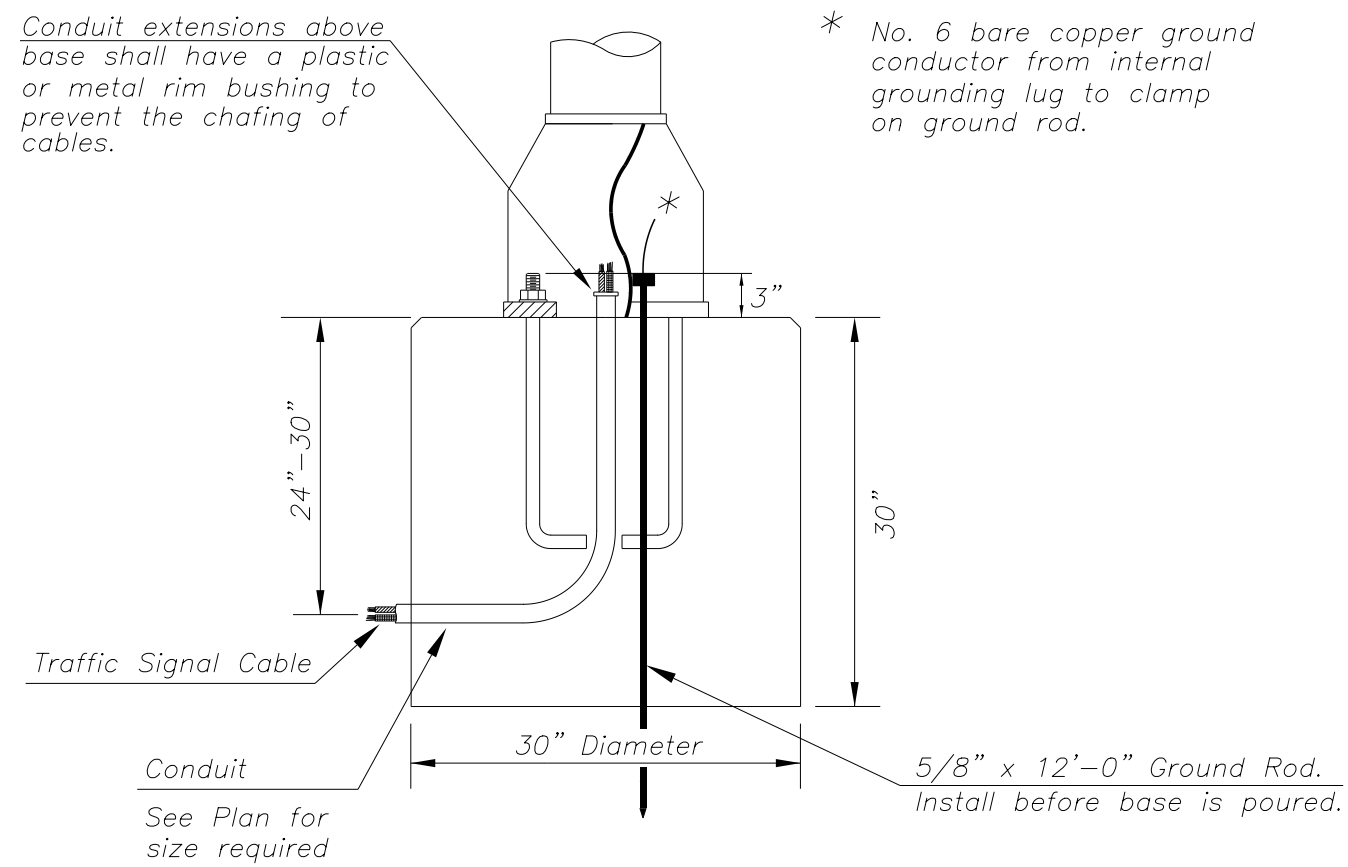
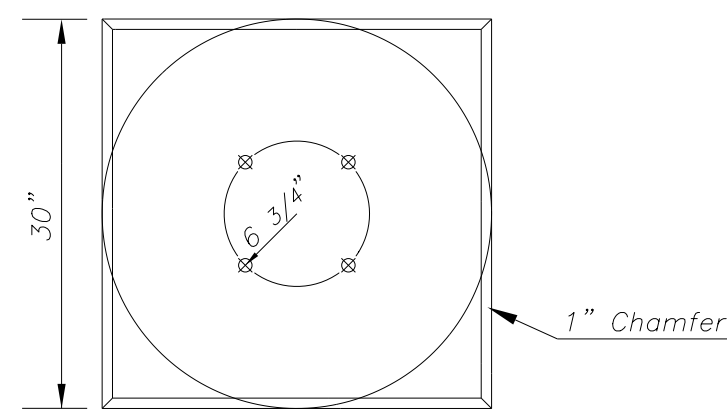


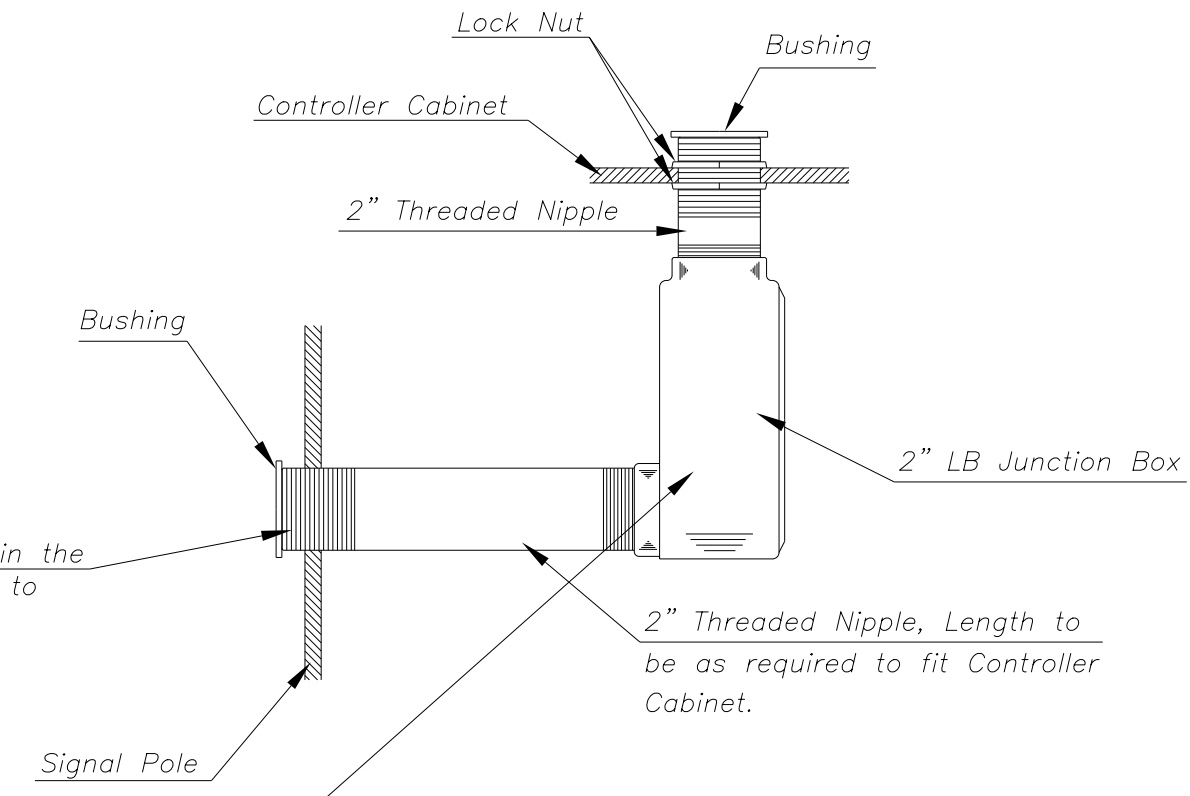
Use Keystone "No-Weld Number 1 Anti-Seize Compound" on all bolts & nuts.



**ANCHOR BOLT
DETAIL**



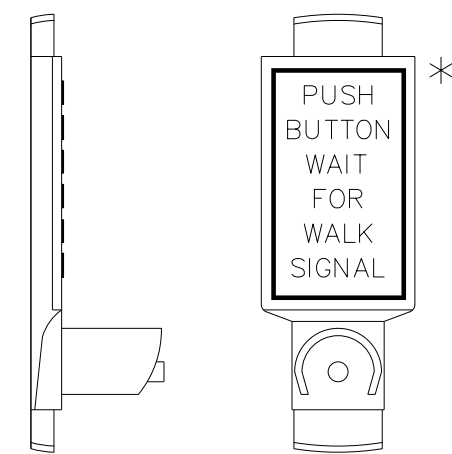
CONCRETE BASE DETAIL



A hole shall be drilled in the signal pole & threaded to receive the 2" nipple.

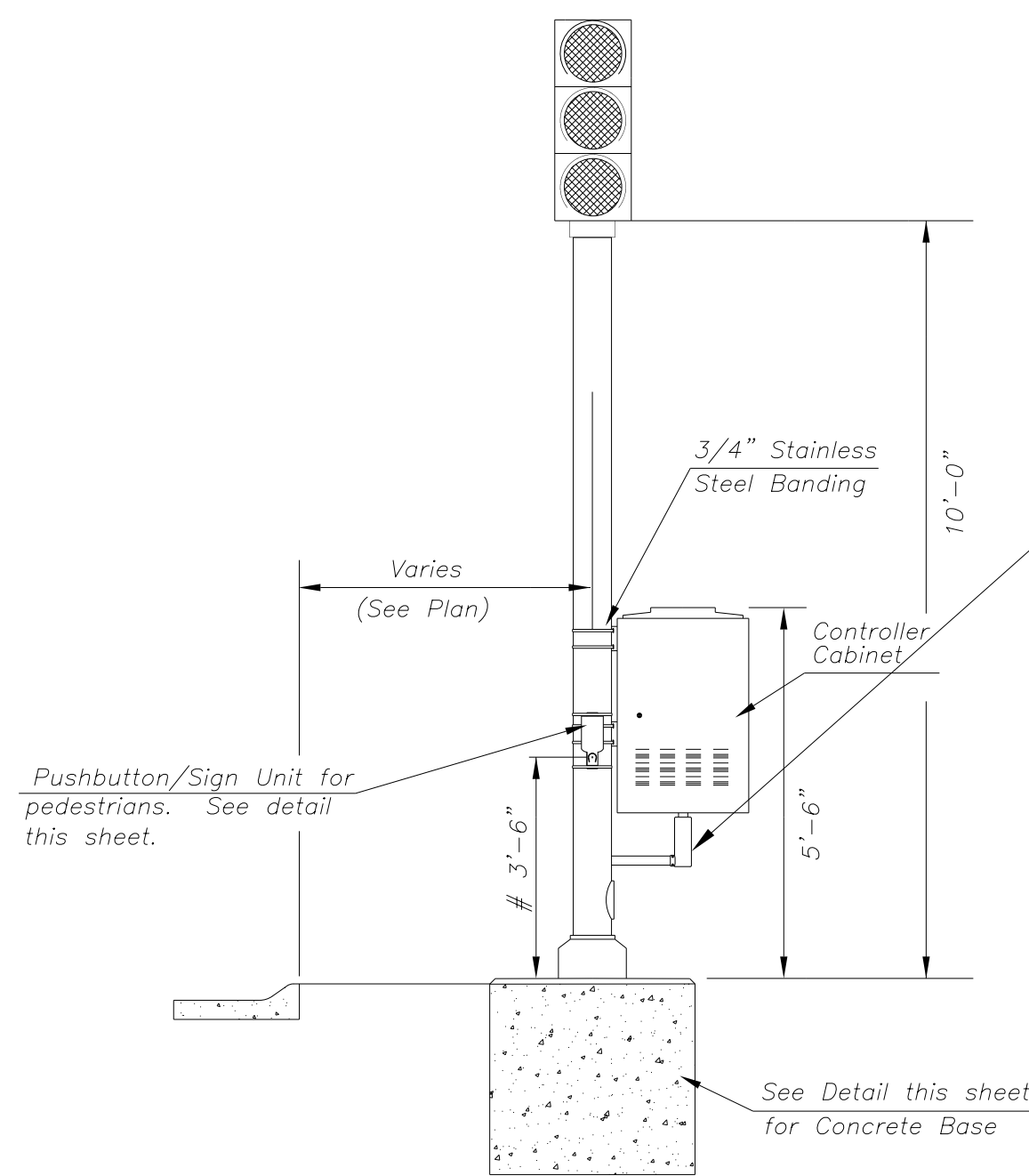
2" Threaded Nipple, Length to be as required to fit Controller Cabinet.

* NOTE: MESSAGE TO BE CAST WITH HOUSING (ONE PIECE)



INSTALL PEDESTRIAN PUSHBUTTON UNDERNEATH CORRESPONDING PEDESTRIAN SIGNAL HEAD ON SIDE OF POLE NEAREST CROSSWALK. UNIT SHALL BE FIRMLY ATTACHED TO THE SIDE OF POLE WITH 3/4" STEEL BANDS. SHARP ENDS SHALL BE FOLDED UNDER TO PREVENT INJURY TO PEDESTRIANS.

**PEDESTRIAN PUSHBUTTON/SIGN
UNIT DETAIL**



From Sidewalk Finish Grade to Center of Pushbutton.

TRAFFIC SIGNAL PEDESTAL

**TRAFFIC SIGNAL PEDESTAL & CONCRETE BASE
DETAIL SHEET**

DESIGNED BY: T.M.	SCALE: NO SCALE	REVISED BY:
DATE: MAY 97		DATE:
CITY OF WICHITA DEPARTMENT OF PUBLIC WORKS		
ENGINEERING DIVISION SCOTT LOGAN, TRAFFIC ENGINEER		



13TH STREET AT RIDGE ROAD
TRAFFIC SIGNAL DETAILS

CITY ENGINEER
JAMES L. ARMOUR, P.E., L.S.

PROJECT NUMBER 472-84817 PHASE I	OCA NUMBER 770005	DATE 11/2011
-------------------------------------	----------------------	-----------------

CITY ENGINEER'S OFFICE CITY HALL - SEVENTH FLOOR 455 NORTH MAIN STREET WICHITA, KANSAS 67202-1620 (316) 268-4501		DESIGN	DRAWN
		SHEET 68 of 113	