

SE 1/4 Sec. 9, T27S, R1W

Matt Lillie Lot 1
SE 1/4 Sec. 9, T27S, R1W

Sta. 199+34, 57' Lt. Adjust
Valve Box Top Elev. (12" Water Valve)
Exist. Top Elev. = 1334.85
Prop. Top Elev. = 1335.5 (Match Finish Grade)
Total Adjustment = +0.65'
(Cost Subsidiary to "Valve Box Adjusted")

Sta. 199+28, 54' Rt. Adjust
Valve Box Top Elev. (16" Water Valve)
Exist. Top Elev. = 1335.47
Prop. Top Elev. = 1335.8 (Match Finish Grade)
Total Adjustment = +0.32'
(Cost Subsidiary to "Valve Box Adjusted")

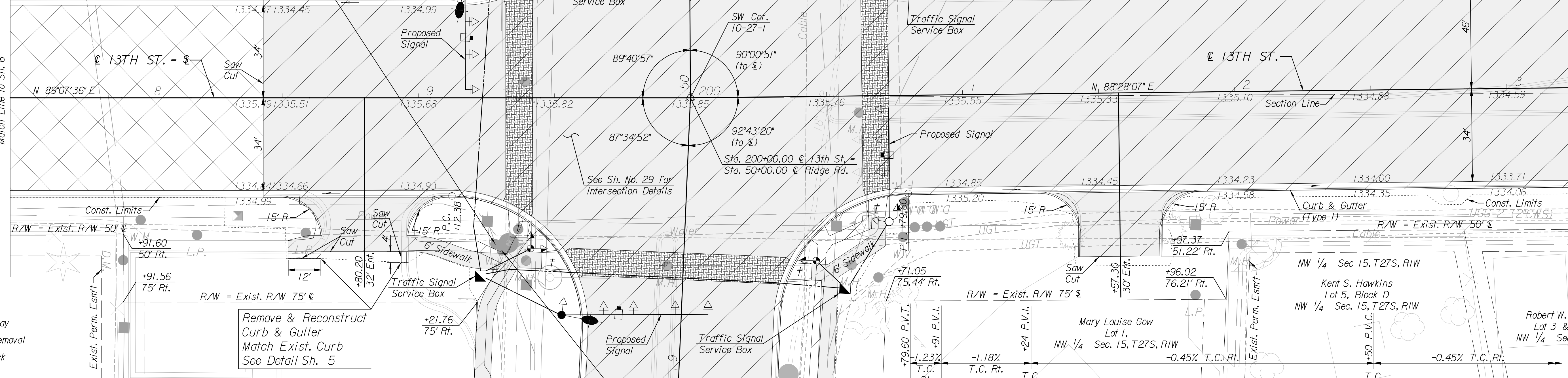
Adjust Existing 7" I.D. Manhole
Existing Rim Elevation = 1335.07
Proposed Rim Elevation = 1335.14

SW 1/4 Sec. 10, T27S, R1W

Sedgwick County ZOO
Block A, Lot 2
SW 1/4 Sec. 10, T27S, R1W

Match Line to Sh. 6

Match Line to Sh. 10



LEGEND

	Asphalt
	Concrete
	Mill & Overlay
	Pavement Removal
	Paving Brick

UTILITY LEGEND

	UGG-1	Kansas Gas Service
	UGG-2	Black Hills Energy
	Water	Wichita Water Utilities
	San. Sew.	Wichita Water Utilities
	Power	Westar Energy
	Cable	Cox Communications
	UGT	AT&T

REMOVAL OF EXISTING STRUCTURES*

STATION	SIDE	ITEM
198+34	RT	Traffic Signal Junction Box
199+31	LT	Traffic Signal Pole, Mast Arm, Signal Heads
199+33	RT	Traffic Signal Pedestal
199+39	LT	Traffic Signal Manhole
199+45	RT	Traffic Signal Pedestal
199+48	RT	Traffic Signal Pole, Mast Arm, Signal Heads
200+53	LT	Traffic Signal Pole, Mast Arm, Signal Heads
200+62	RT	Traffic Signal Manhole
200+62	LT	Traffic Signal Pedestal
200+64	RT	Traffic Signal Pole, Mast Arm, Signal Heads
201+68	LT	Traffic Signal Junction Box
202+79	RT	Sign, 40 MPH
203+08	LT	Traffic Signal Junction Box

Note:
Elevations shown along Curb and Gutter are to the High Edge and Top of Curb at even and +50 stations.
* Wheelchair Ramp with Detectable Warning
For Signal Plans, See Sh. No. 62-71

- SW Cor. Sec. 10, T27S, R1W
Project Coordinate: N 1693808.64 E 1623206.81
- Found #4 rebar in thimble
 - = 13th St. Tangent Sta. 200+00.00
 - Existing NE corner of conc. base traffic signal pole
 - Existing "x" cut on curb 0.43' from joint in curb
 - Existing center of SW bolt in base of traffic signal pole
 - Existing 3 nails in NW face of power pole
 - Existing 3 nails in NE face of power pole
 - Existing "x" cut on curb 5' NE of ramp
 - Existing "x" cut on curb 7' SE of ramp
 - Existing 3 nails in SE face of power pole

Sta. 199+31, 56' Rt. Adjust
Valve Box Top Elev. (20" Water Valve)
Exist. Top Elev. = 1334.87
Prop. Top Elev. = 1335.8 (Match Finish Grade)
Total Adjustment = +0.93'
(Cost Subsidiary to "Valve Box Adjusted")

B.M. #35 COW BM 50' E of E Ridge, 95' N of E 13th St., 14' E of back of curb
94.63' Lt., Sta. 200+50.81 E 13th St. Elev. 1335.51



13TH STREET PLAN
STA. 197+50 TO STA. 203+25

CITY ENGINEER
JAMES L. ARMOUR, P.E., L.S.

PROJECT NUMBER	OCA NUMBER	DATE
472-84817 PHASE I	770005	11/2011

CITY ENGINEER'S OFFICE
CITY HALL - SEVENTH FLOOR
455 NORTH MAIN STREET
WICHITA, KANSAS 67202-1620
(316) 268-4501

DESIGN DRAWN
SHEET
8 of 113

Plotted on: Thursday September 29, 2011 04:26 PM
Plot Queue: \\vopw00\pl\TBWLP
Plot Scale: 20.000000:000000 Pen Table: \\vopw00\jobs\4809\13th\plan\cc-22x36.pen
Design Filename: \\vopw00\jobs\4809\13th\plan\13th_ridge_plan.dgn

