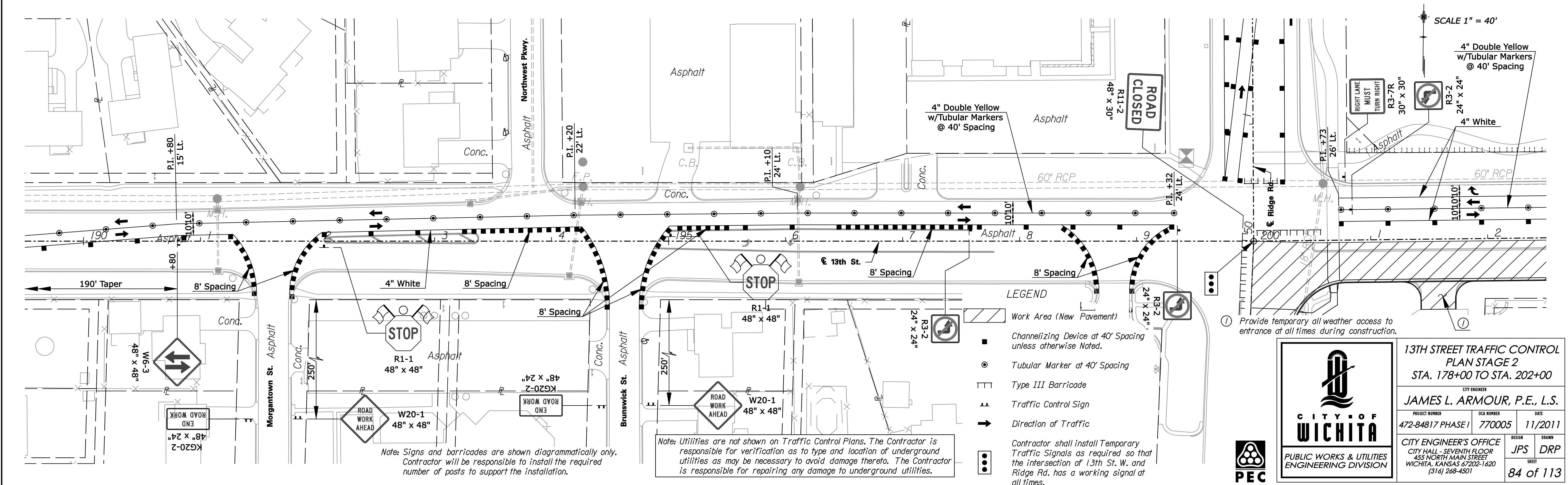


Note: Adjust signing dimensions as conditions allow.



Note: Signs and barricades are shown diagrammatically only. Contractor will be responsible to install the required number of posts to support the installation.

Note: Utilities are not shown on Traffic Control Plans. The Contractor is responsible for verification as to type and location of underground utilities as may be necessary to avoid damage thereto. The Contractor is responsible for repairing any damage to underground utilities.

- LEGEND**
- Work Area (New Pavement)
 - Channelizing Device at 40' Spacing unless otherwise Noted.
 - Tubular Marker at 40' Spacing
 - Type III Barricade
 - ⊥ Traffic Control Sign
 - Direction of Traffic

Contractor shall install Temporary Traffic Signals as required so that the intersection of 13th St. W. and Ridge Rd. has a working signal at all times.



CITY OF WICHITA
PUBLIC WORKS & UTILITIES
ENGINEERING DIVISION

**13TH STREET TRAFFIC CONTROL
PLAN STAGE 2
STA. 178+00 TO STA. 202+00**

CITY ENGINEER
JAMES L. ARMOUR, P.E., L.S.

PROJECT NUMBER: 472-84817 PHASE I
O&A NUMBER: 770005
DATE: 11/2011

CITY ENGINEER'S OFFICE
CITY HALL - SEVENTH FLOOR
455 NORTH MAIN STREET
WICHITA, KANSAS 67202-1620
(316) 268-4501

DESIGN: JPS
DRAWN: DRP
SHEET: 84 of 113