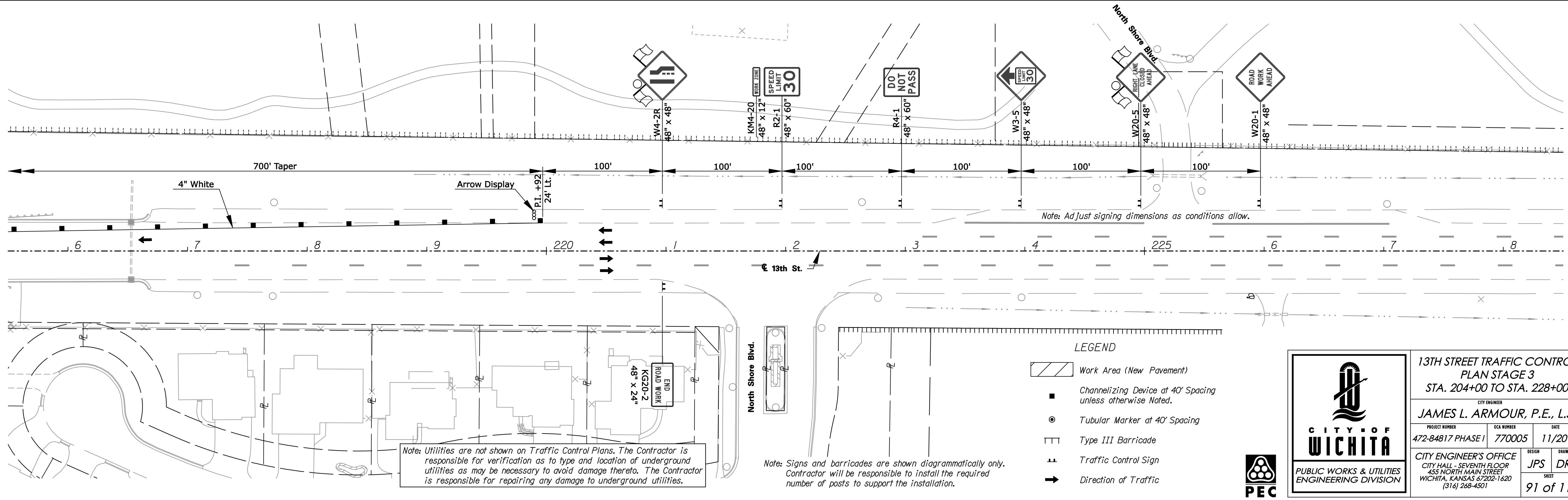
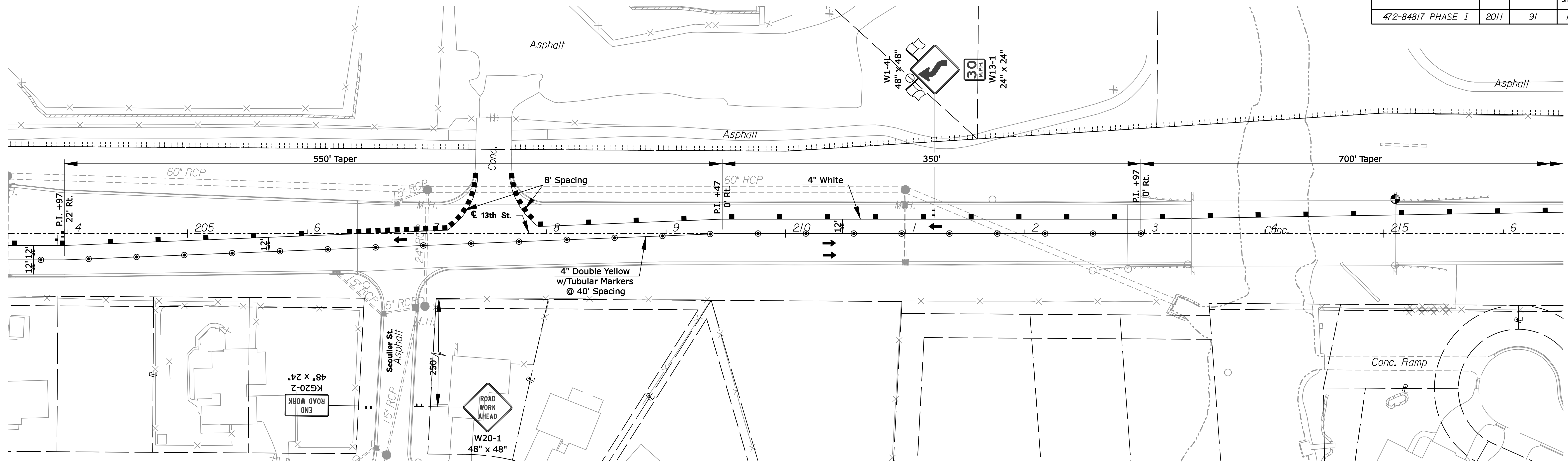


| | | | |
|-------------------|------|-----------|--------------|
| PROJECT NO. | YEAR | SHEET NO. | TOTAL SHEETS |
| 472-84817 PHASE I | 2011 | 91 | 113 |



LEGEND

- Work Area (New Pavement)
- Channelizing Device at 40' Spacing unless otherwise Noted.
- Tubular Marker at 40' Spacing
- Type III Barricade
- Traffic Control Sign
- Direction of Traffic



| | | |
|---|------------|-----------|
| 13TH STREET TRAFFIC CONTROL PLAN STAGE 3 | | |
| STA. 204+00 TO STA. 228+00 | | |
| CITY ENGINEER | | |
| JAMES L. ARMOUR, P.E., L.S. | | |
| PROJECT NUMBER | OCA NUMBER | DATE |
| 472-84817 PHASE I | 770005 | 11/2011 |
| CITY ENGINEER'S OFFICE | | DESIGN |
| CITY HALL - SEVENTH FLOOR | | JPS |
| 455 NORTH MAIN STREET | | DRP |
| WICHITA, KANSAS 67202-1620 | | SHEET |
| (316) 268-4501 | | 91 of 113 |

Drawn By: drp
 Plotted: 13-SEP-2011 14:23
 File: I:\2009\09520-002\Traffic Control\Stage 4\09520-002-13th-v11.dgn