

LAKE EDGE TREATMENT TO SERVE HAMPTON SQUARE SECOND ADDITION & PRAIRIE POINTE

THE CITY OF WICHITA
EDGECOUNTY, KANSAS
JAMES L. ARMOUR, P.E. - CITY ENGINEER

STORM WATER DRAIN NO. 383

PROJECT NO. 468-84762

OCA NO. 751499

MKEC
ENGINEERING
CONSULTANTS, INC.
411 N. WEBB ROAD
WICHITA, KS. 67206
316-684-9600



LAKE EDGE TREATMENT
**HAMPTON SQUARE SECOND
& PRAIRIE POINTE ADDITION**

GENERAL NOTES

1. UNDERGROUND UTILITY SERVICE LINES AND OVERHEAD UTILITY POLE LINES ARE TO BE ADJUSTED AS NECESSARY BY OTHERS PRIOR TO CONSTRUCTION UNLESS THE PLANS CALL FOR THEIR ADJUSTMENT BY THE CONTRACTOR. EXISTING UTILITIES AND THEIR LOCATION AS SHOWN ON THE PLANS, REPRESENT THE BEST INFORMATION OBTAINABLE FOR DESIGN. LOCATION INFORMATION HAS BEEN OBTAINED FROM THE VARIOUS UTILITY COMPANIES AND IS EITHER FROM COMPANY DRAWINGS OR COMPANY PROVIDED FIELD LOCATIONS. THE CONTRACTOR WILL BE REQUIRED TO WORK AROUND EXISTING UTILITIES WITHIN THE RIGHT-OF-WAY WHICH DO NOT CONFLICT WITH PROPOSED CONSTRUCTION.

2. RUBBLE FROM THE REMOVAL OF MISCELLANEOUS STRUCTURES SHALL BE DISPOSED OF ON SITES TO BE PROVIDED BY THE CONTRACTOR AND APPROVED AS NOTED BELOW.

ALL DISPOSAL SITES MUST BE APPROVED BY THE DEPARTMENT OF HEALTH AND ENVIRONMENT. MATERIAL EITHER STOCKPILED OR DISPOSED OF IN A FLOOD PLAIN WOULD REQUIRE A KANSAS STATE BOARD OF AGRICULTURE PERMIT. ANY MATERIAL DUMPED IN WATERS OF THE UNITED STATES OR WETLANDS IS SUBJECT TO U.S. CORPS OF ENGINEERS PERMITTING REGULATIONS. ANY MATERIAL BURIED OR STOCKPILED BEYOND APPROVED CONSTRUCTION LIMITS WOULD REQUIRE ADDITIONAL ARCHEOLOGICAL INVESTIGATIONS UNLESS BURIED BY A PREVIOUSLY APPROVED BORROW LOCATION.

3. CONTRACTOR SHALL SATISFY HIMSELF OF SURFACE AND SUBSURFACE CONDITIONS PRIOR TO BIDDING.

4. CONTRACTOR SHALL PROVIDE A MINIMUM SEVENTY-TWO HOUR ADVANCED NOTICE (EXCLUDING WEEKENDS AND HOLIDAYS) PRIOR TO BEGINNING ANY EXCAVATION, TO KANSAS ONE-CALL SYSTEM, A UTILITY LOCATION SERVICE, AT (316) 687-2470 TO REQUEST THE FOLLOWING UTILITY COMPANIES TO LOCATE ALL EXISTING LINES WITHIN THE PROJECT AREA AQUILA NETWORK, WESTAR ENERGY, AT&T, COX COMMUNICATIONS, CITY OF WICHITA SEWER MAINTENANCE AND CITY OF WICHITA WATER DEPARTMENT.

5. PRIOR TO CONSTRUCTION, THE CONTRACTOR SHALL RE-ESTABLISH CONTROL POINTS AND BENCH MARKS AND VERIFY THEIR ACCURACY.

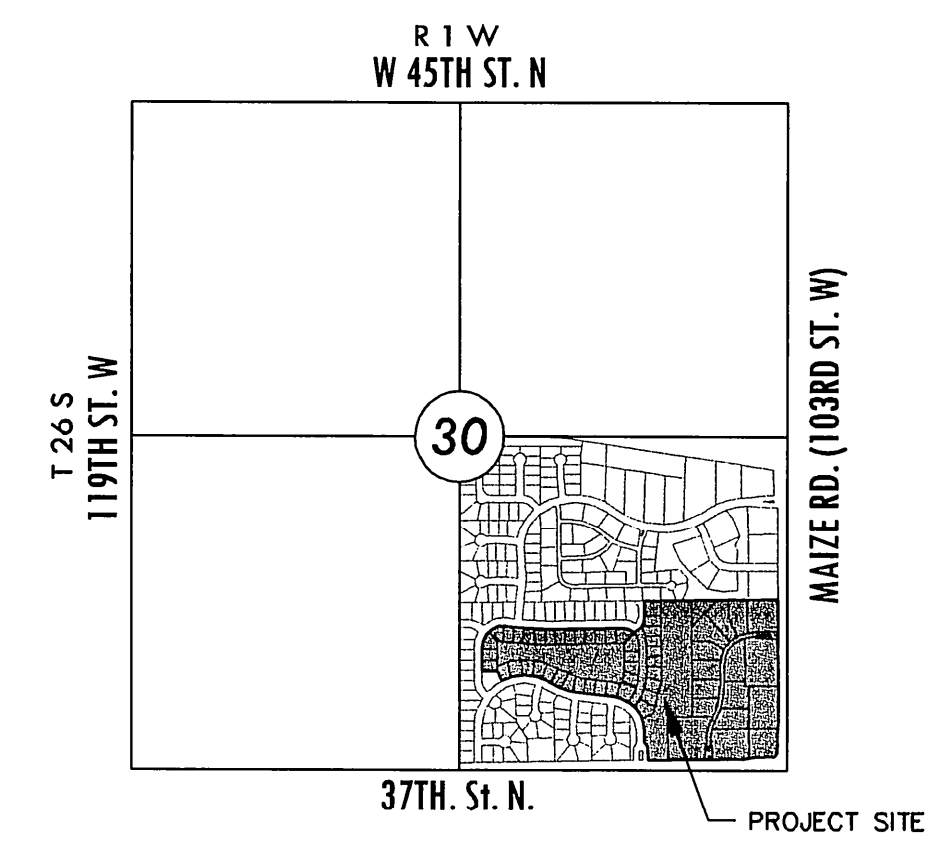
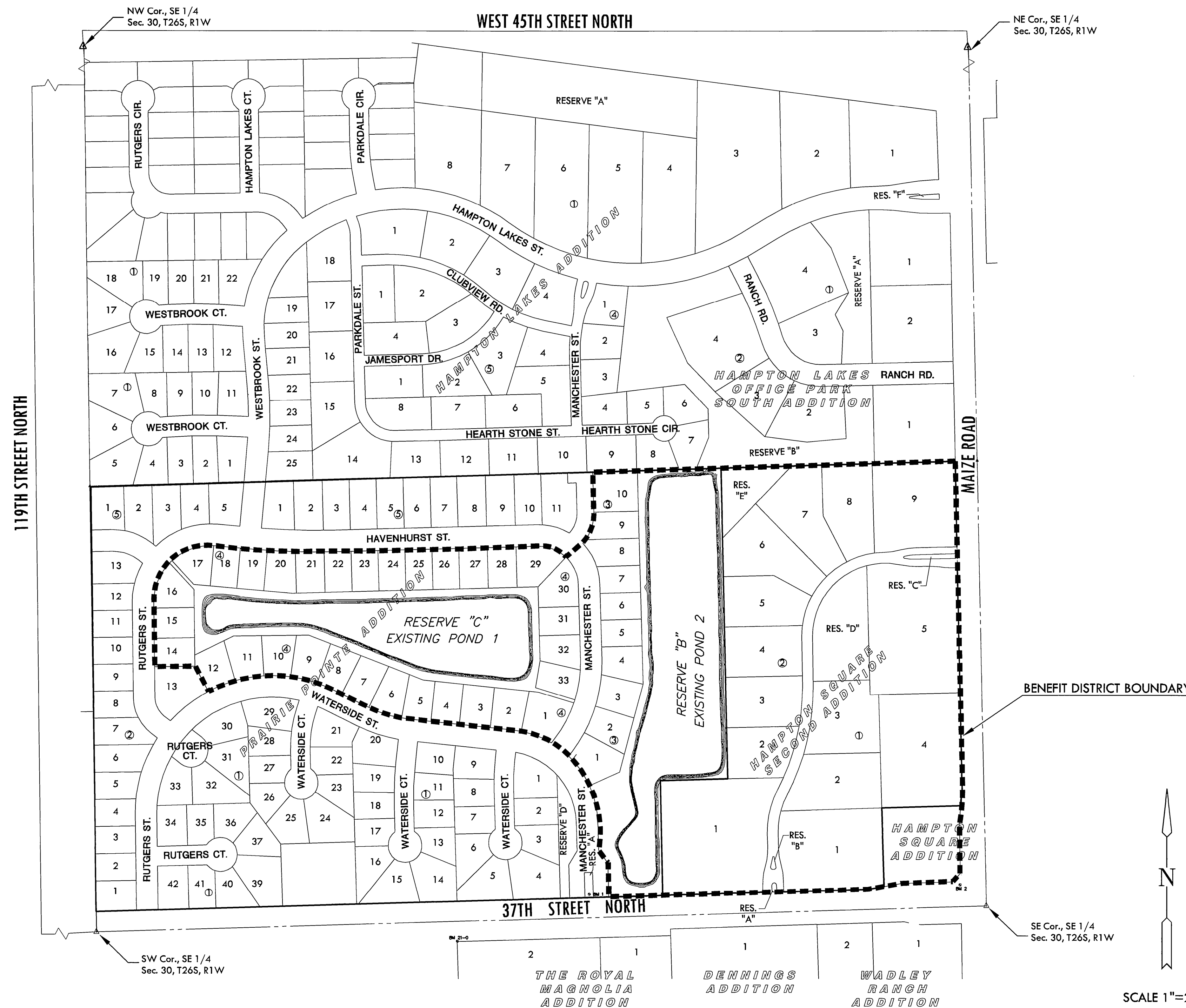
6. THE CONTRACTOR SHALL RESTORE ALL DISTURBED AREAS TO PRE-CONSTRUCTION CONDITION ACCORDING TO THE REQUIREMENTS OF CITY OF WICHITA ADMINISTRATIVE REGULATION 76. THIS WORK SHALL BE PAID FOR AS PART OF THE BID ITEM "SITE RESTORATION".

7. THE CONTRACTOR SHALL REPLACE ANY IRRIGATION RELATED ITEMS (E.G. LINES, HEADS, CONTROL VALVES, ETC.) DAMAGED DURING CONSTRUCTION. COST SUBSIDIARY TO PROJECT.

8. ALL AREAS DISTURBED DURING CONSTRUCTION SHALL BE SEEDED WITH KANSAS PREMIUM BLEND FESCUE AT A RATE OF 8 LBS./1,000 SF. SEEDING SHALL OCCUR DURING THE DATES OF MARCH 1ST THROUGH APRIL 15TH OR SEPTEMBER 1ST THROUGH OCTOBER 15TH.

WASTE EXCAVATION

EXCESS EXCAVATED MATERIAL FROM THIS PROJECT SHALL REMAIN ON SITE AND MAY BE WASTED WITH OWNER'S PERMISSION ON UNDEVELOPED LOTS ALONG THE WESTERN EDGE OF THE SUBDIVISION, OUTSIDE STREET RIGHT-OF-WAY AND EASEMENTS, UNIFORMLY SPREADING SUCH MATERIAL AND SLOPING TO DRAIN. PAYMENT FOR PLACING AND SPREADING OF WASTE EXCAVATION SHALL BE SUBSIDIARY TO OTHER CONTRACT ITEMS OF WORK.



VICINITY MAP

INDEX TO DRAWINGS

SHEET NO.	DESCRIPTION
1	TITLE SHEET
2	EMBANKMENT PROTECTION-POND 1
3	EMBANKMENT PROTECTION-POND 2
4-8	SUPPORTING PLATS
9-11	SUPPORTING PLATS

BENCHMARKS

- BM 21-0 BM-Chiseled square on concrete base of brick fence post on south side of 37th St. 1573 feet west of Maize Rd. ELEV.=1356.01 N.A.V.D. 88
- BM 1 BM-Chiseled square on top of curve at south end of entrance island at 37th St. N and Manchester St. ELEV.=1357.69 NAVD 88
- BM 2 BM-Chiseled square at northwest corner of pad for traffic signal manhole at northwest corner of Maize Rd, and 37th St. ELEV.=1354.49 N.A.V.D. 88

NOTE:
CONTRACTOR TO VERIFY SIZE & DEPTH OF EXISTING UTILITIES PRIOR TO CONSTRUCTION

SCALE 1"=200'

TITLE SHEET

SHEET TITLE
468-84762
PROJECT NUMBER

MKEC | TBK | GJA
DESIGNED DRAWN CHECKED

ISSUED
November 2011

REVISED

SHEET NO.
1 of 11

PLOT DATE: Tuesday, November 08, 2011 @ 04:22PM

L:\PROJECTS\2010\100100582_PREMIER_HAMPTON_SQUARE_2ND-5-CIVIL\CAD\LAKE_EDGE_TREATMENT\TILESHEET.DWG