

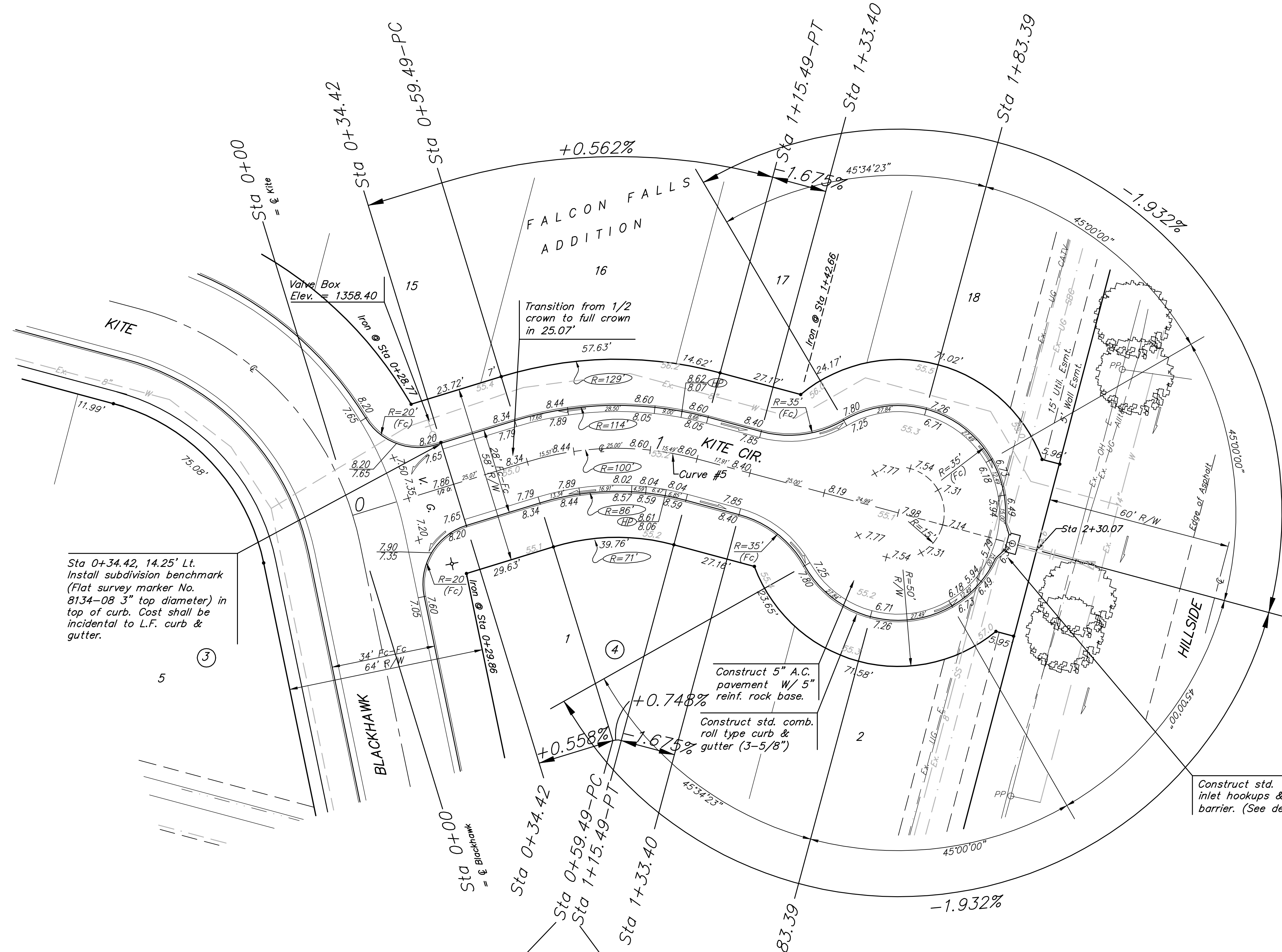
BENCHMARKS:

BM #1: "□" CL face of catch basin, west side of Lot 4, Block 5. Elev. = 1352.47 MSL

BM #2: "□" south end of the south curb return at Kite and Peregrine. Elev. = 1359.85 MSL

P.V.I.
Elev. = 1358.70
35.82' V.C.

Scale: 1" = 20'
• = Iron



Sta 0+34.42, 14.25' Lt. Install subdivision benchmark (Flat survey marker No. 8134-08 3" top diameter) in top of curb. Cost shall be incidental to L.F. curb & gutter.

Construct 5" A.C. pavement w/ 5" reinf. rock base.
Construct std. comb. roll type curb & gutter (3-5/8")

Construct std. type 1A inlet hookups & inlet sediment barrier. (See detail, sheet 19)

P.V.I.
Elev. = 1356.20
30' V.C.

P.V.I.
Elev. = 1358.34
No V.C.

P.V.I.
Elev. = 1358.70
35.82' V.C.

Curve #5
Curve Data Based on Centerline

Rad. = 100' Delta = 32°05' 15" Tangent = 28.76'
Arc = 56' L.C. = 55.27' Defl/Ft. = 17.18973 Min.

Station	Arc	FACE CHORD LENGTHS		Defl.	T. Defl.
		8' Lt.	8' Rt.		
0+59.49	-	-	-	0°00'00"	0°00'00"
0+75.00	15.51'	19.37'	11.62'	4°26'37"	4°26'37"
1+00.00	25.00'	31.17'	18.70'	7°09'44"	11°36'21"
1+15.49	15.49'	19.34'	11.61'	4°26'16"	16°02'37"

NOTE: ROLL TYPE CURB & GUTTER TO BE CONSTRUCTED ON THE PAVEMENT SHOWN ON THIS SHEET. TOP OF CURB ELEVATIONS ARE GIVEN FOR FULL HEIGHT CURB.

	FALCON FALLS ADDITION - PH. II KITE CIR. STA 0+00 TO STA 1+83.39	
	Baughman Company, P.A. 315 Ellis St. Wichita, KS 67211 P 316-262-7271 F 316-262-0149 ENGINEERING SURVEYING PLANNING LANDSCAPE ARCHITECTURE	
PROJECT NUMBER 472-83689	DESIGN TMS	DRAWN TMS
REVISIONS:	APPROVED DATE 12/04	SCALE Noted SHEET 10 OF 26
Falcon Falls/Std4		04-10-E076