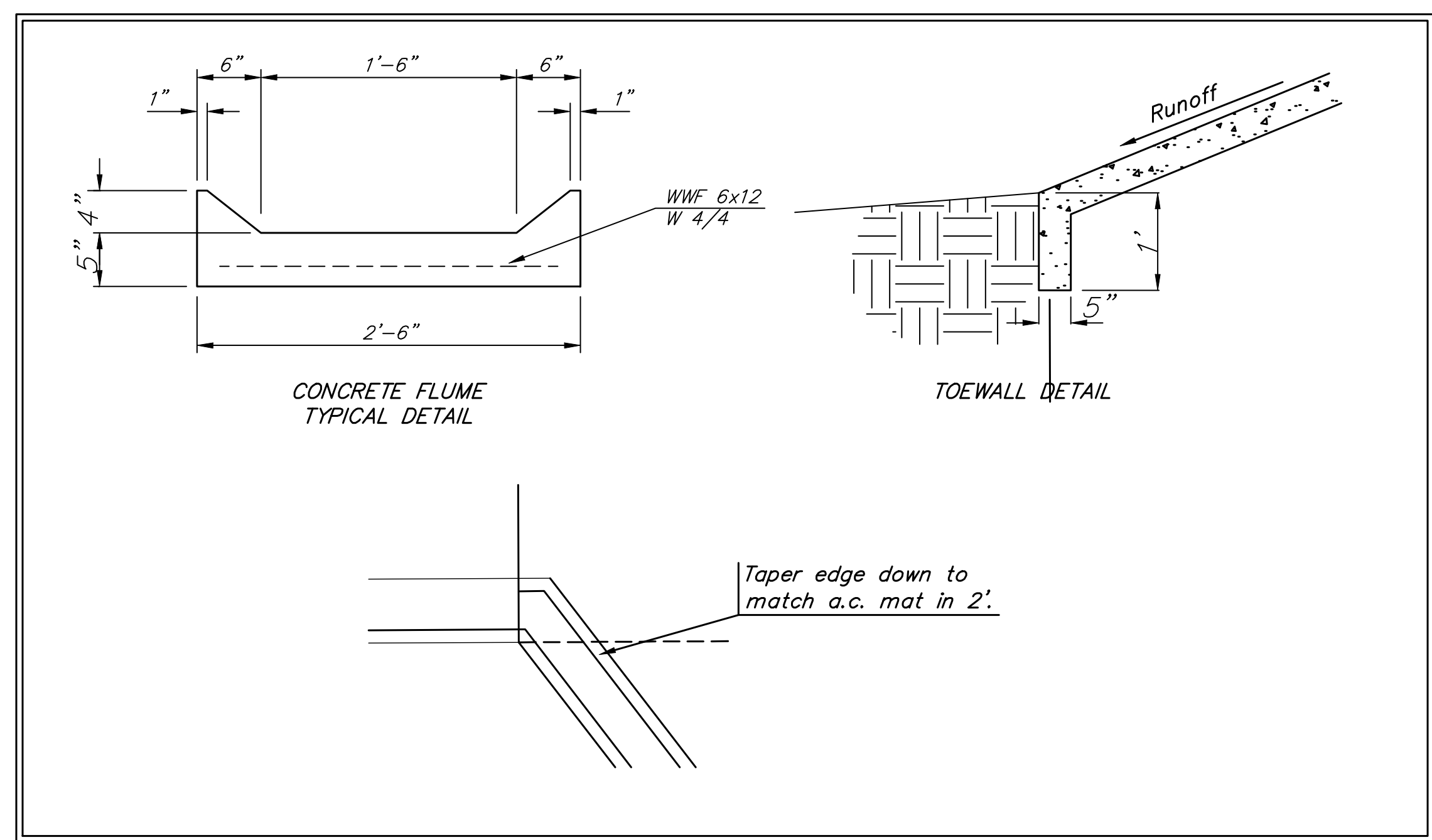
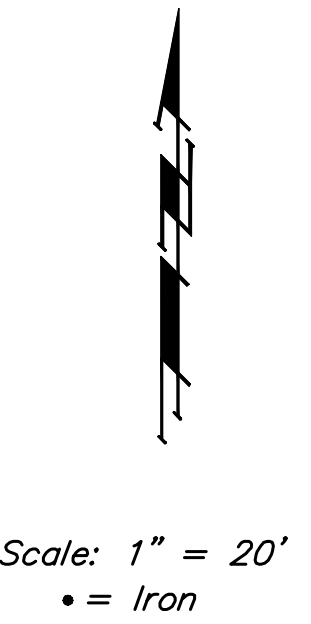


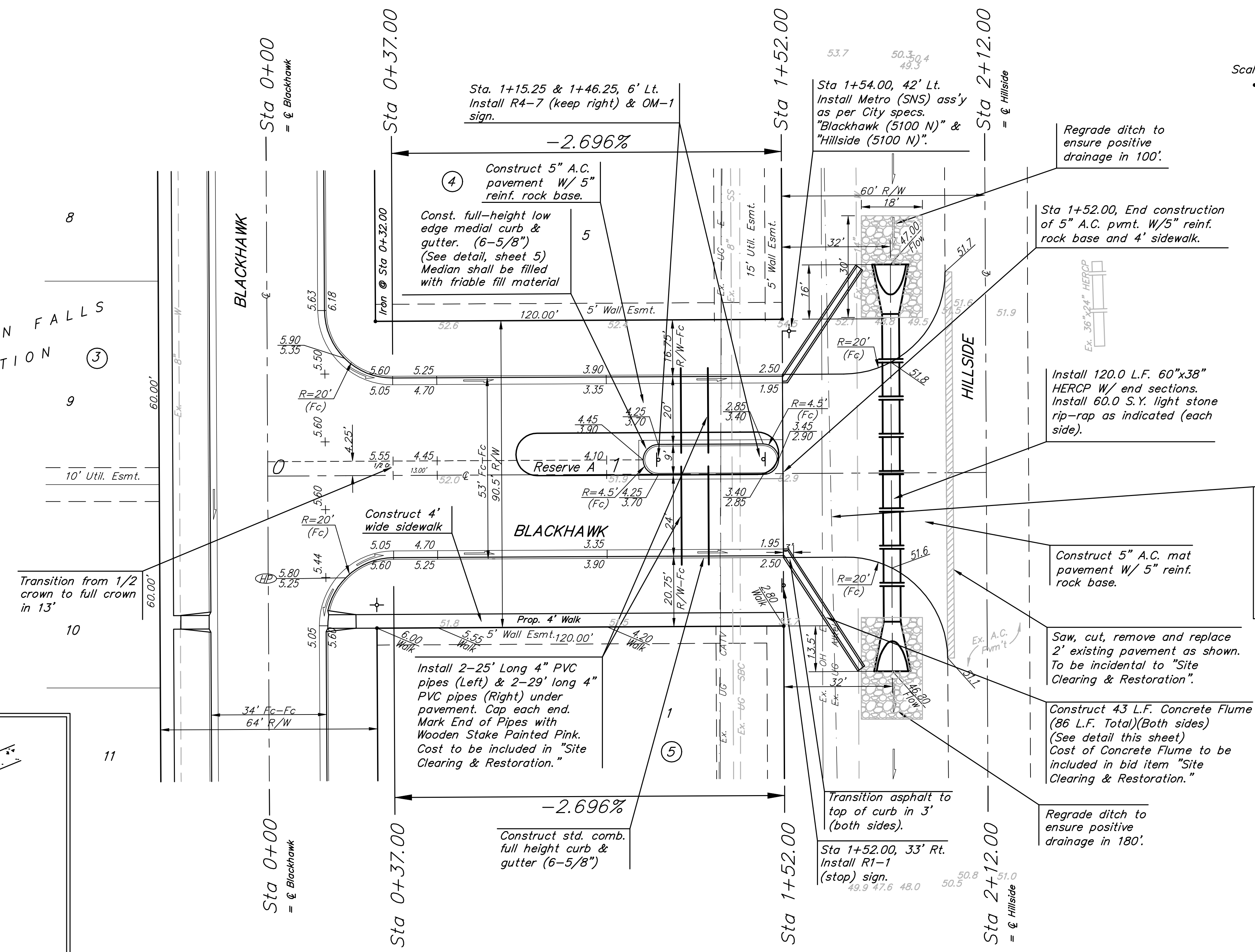
BENCHMARKS:

BM #1: "□" CL face of catch basin, west side of Lot 4, Block 5. Elev. = 1352.47 MSL

BM #2: "□" south end of the south curb return at Kite and Peregrine. Elev. = 1359.85 MSL



FALCON FALLS ADDITION



		FALCON FALLS ADDITION - PH. II BLACKHAWK STA 0+00 TO STA 2+12.00	
Baughman Company, P.A. 315 Ellis St. Wichita, KS 67211 P 316362-7771 F 316262-0149 ENGINEERING SURVEYING PLANNING LANDSCAPE ARCHITECTURE			
PROJECT NUMBER 472-83689	DESIGN TMS	DRAWN TMS	DATE 12/04
REVISIONS:	APPROVED	SCALE Noted	SHEET
			11 OF 26