

BENCHMARKS:

BM #1: "□" CL face of catch basin, west side of Lot 4, Block 5.
Elev. = 1352.47 MSL

BM #2: "□" south end of the south curb return at Kite and Peregrine.
Elev. = 1359.85 MSL

EROSION CONTROL MEASURE	UNITS	QUANTITY
SILT FENCE	L.F.	0
RIPRAP	S.Y.	SEE PLAN
DROP INLET BARRIER	EA.	MAINT.
CURB INLET BARRIER	EA.	1 + MAINT.
STRAW BALE DITCH CHECK	EA.	9 + MAINT.
EARTHEN DIKES	L.F.	0
CURLEX	S.Y.	2864
POND E.C. BLANKET	S.Y.	0
Construction Entrance	EA.	1

QUANTITIES ARE FOR INFORMATION ONLY!
CONTRACTOR SHALL VERIFY QUANTITIES PER SPECIFIC ENGINEERING PLAN SHEET.

EROSION CONTROL PLAN LEGEND
(Installation Details Found in the SWP2 Plan)

- LIGHT STONE RIP-RAP
- DROP INLET PROTECTION
- CURB INLET PROTECTION
- STRAW BALE BARRIERS
- SILT FENCING
- EARTH DIKES
- CURLEX BLANKET

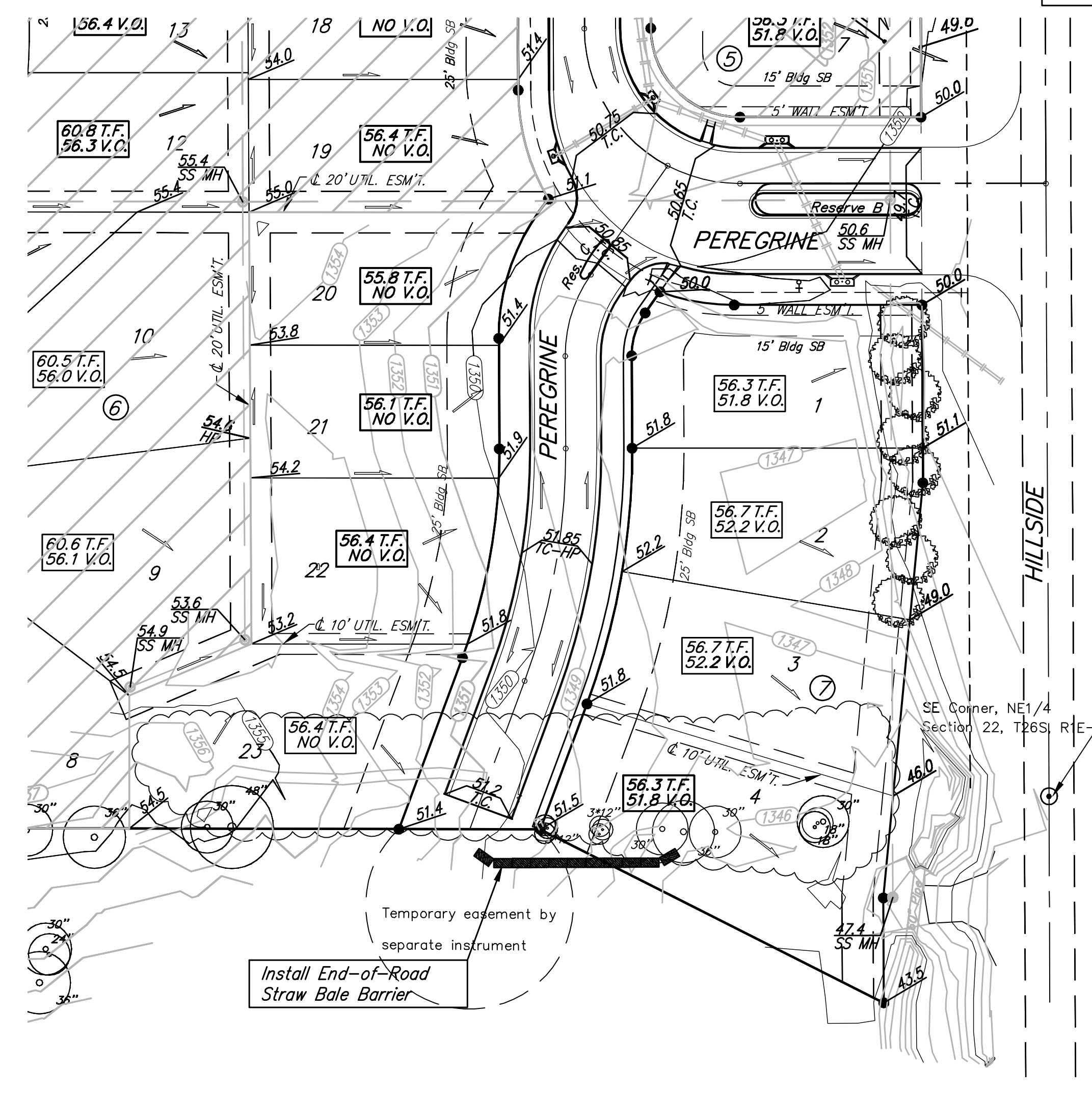
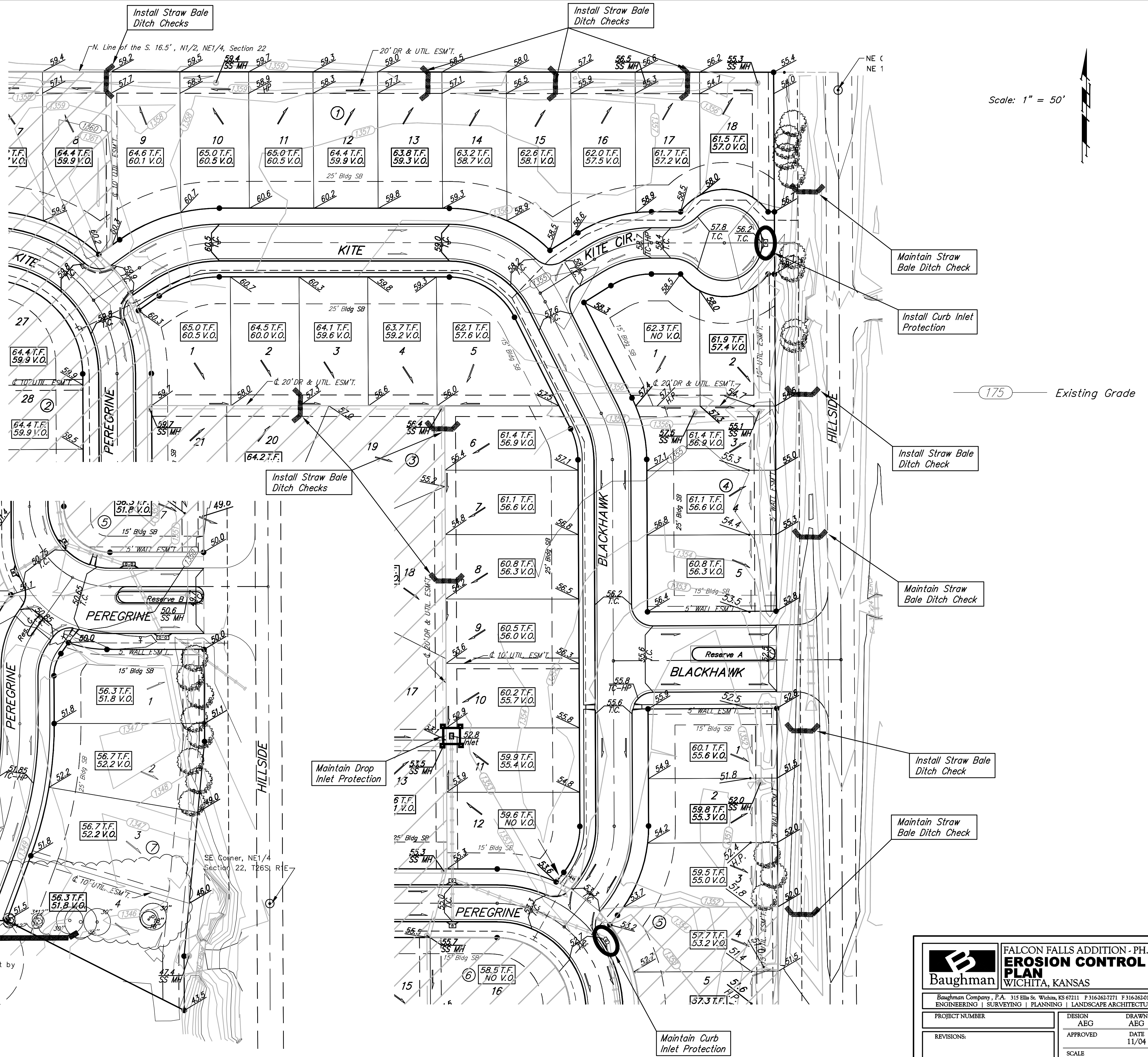
NO SCALE

Hatched area represents Phase 1 of construction activities. Contractor not responsible for erosion control measures in these areas.

- NOTES:**
- This Plan Is Not To Be Used As A Comprehensive Grading Plan. All Spot Elevations Are Proposed & Subject To Change.
 - Each Lot Area Disturbed By Construction Shall Be the Responsibility of Each Individual Homeowner. Owner Responsible to Follow All SWPP Plans & Guidelines For The Area.
 - All Seeding Shall Be Drilled During Spring or Fall Planting Seasons. Fall Seeding Shall Be September 1 thru Mid October. Spring Seeding Shall be From March 15 thru Mid May.

NOTE: Contractor shall remove & replace existing erosion control measures as necessary for construction. Contractor shall be required to maintain all on-site erosion control items until final acceptance by the City of Wichita.

Remove trees ONLY as necessary for construction. Cost of removal to be incidental to lump sum bid item "Site Clearing & Restoration".



Baughman FALCON FALLS ADDITION - PH. IV
EROSION CONTROL PLAN
WICHITA, KANSAS

Baughman Company, P.A. 315 Ellis St. Wichita, KS 67211 P 316-262-7771 F 316-262-0149
ENGINEERING | SURVEYING | PLANNING | LANDSCAPE ARCHITECTURE

PROJECT NUMBER	DESIGN	DRAWN
	AEG	AEG
REVISIONS:	APPROVED	DATE
		11/04
	SCALE	Noted
	SHEET	16 OF 26

Falcon Falls/GradePhaseIV