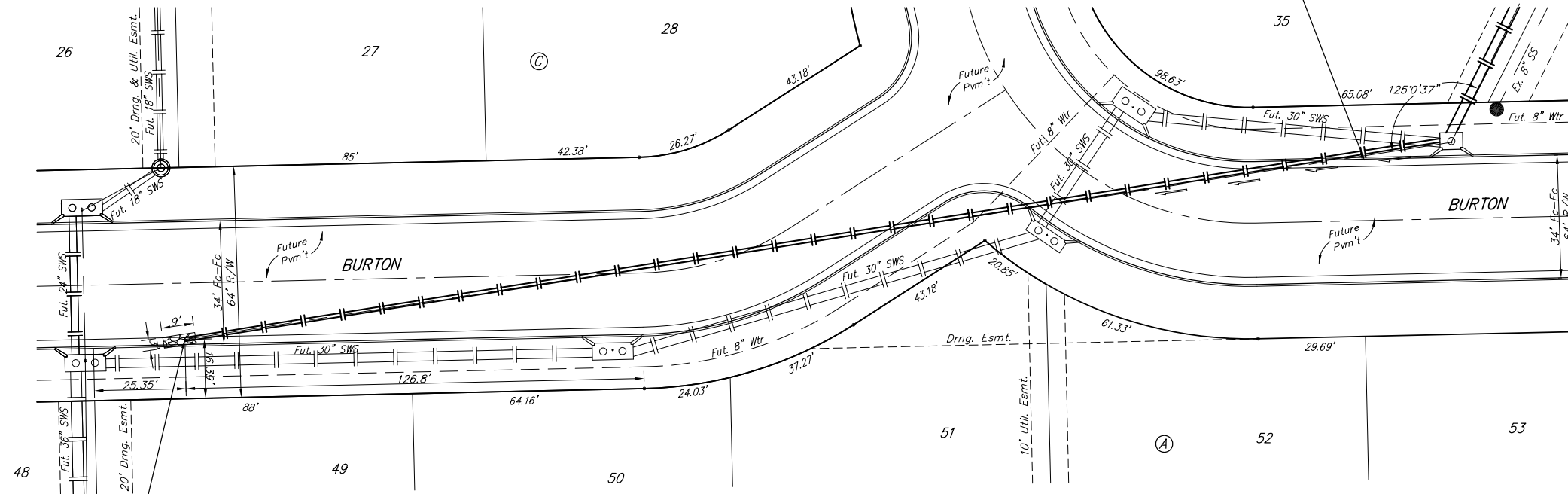


**BENCHMARKS:**  
 "□" Cut in Headwall east side of driveway South R/W Maple, 245' West of centerline of City View. Elev. = 201.41 (City Datum)

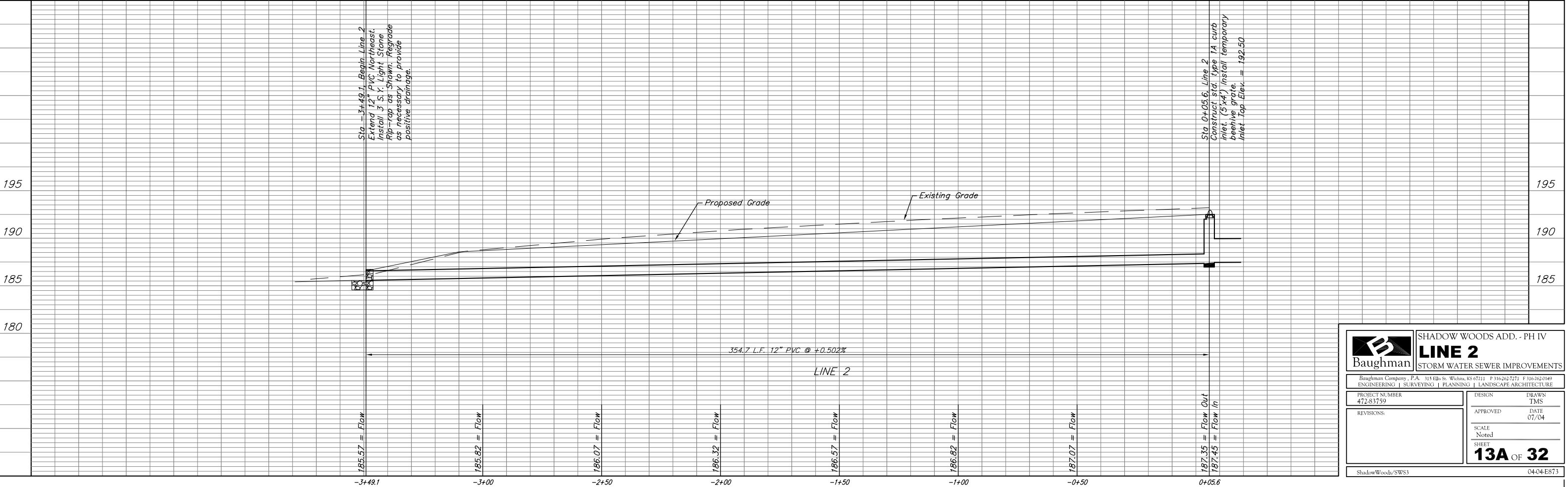
"□" Cut center of north Headwall of RCBC in N. R/W of Maple 570' East of centerline of City View. Elev. = 187.91 (City Datum)



Scale: 1" = 20' Horizontal  
 1" = 5' Vertical  
 • = Iron

Sta -3+49.1, Begin Line 2  
 Extend 12" PVC Northeast.  
 Install 3 S.Y. Light Stone Rip-rap as Shown. Regrade as necessary to provide positive drainage.

12" PVC Pipe to provide temporary drainage from inlet.  
 Overflow shall be through beehive grate in inlet top.



|   |                           |                                |                |
|---|---------------------------|--------------------------------|----------------|
|   |                           | SHADOW WOODS ADD. - PH IV      |                |
|   |                           | <b>LINE 2</b>                  |                |
| ENGINEERING   SURVEYING   PLANNING   LANDSCAPE ARCHITECTURE |                           | STORM WATER SEWER IMPROVEMENTS |                |
| PROJECT NUMBER<br>412-83759                                 | DESIGN<br>TMS             | DATE<br>07/04                  | SCALE<br>Noted |
| REVISIONS:  | SHEET<br><b>13A OF 32</b> |                                |                |
| ShadowWoods/SWS3  |                           | 04-04-E873                     |                |