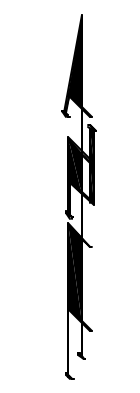
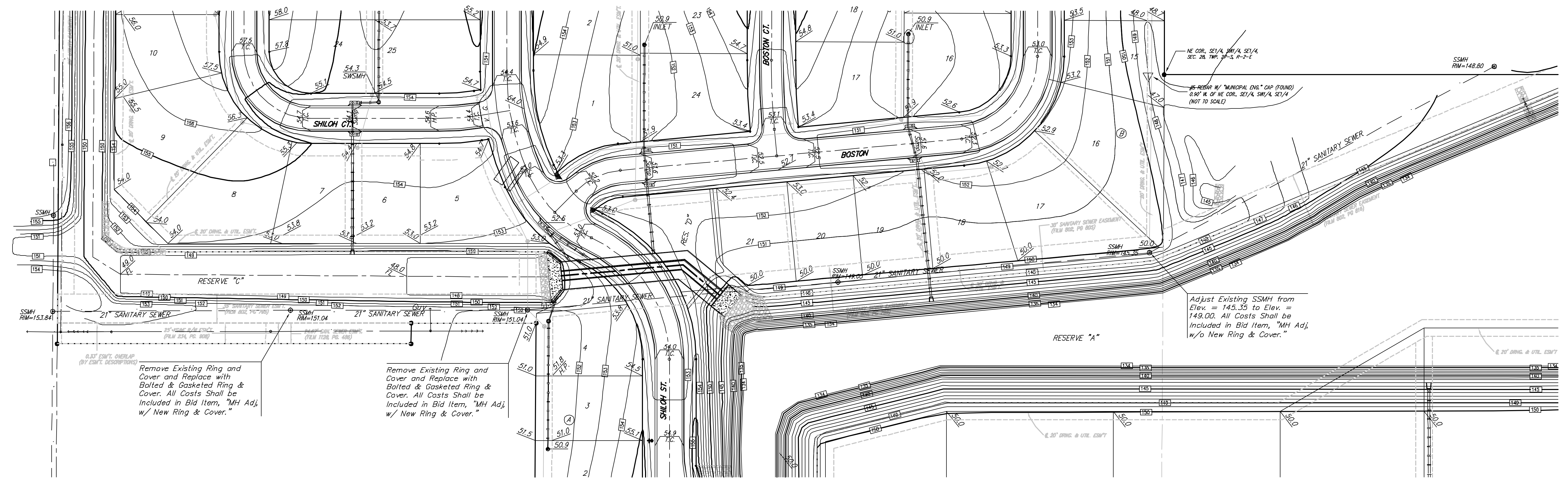


**BENCHMARK:**

- #1. "X" Cut in Sidewalk 519.7 ft. East & 34.0 ft. South of SW Cor. SE 1/4, Sec. 28, Twp. 27-S, R-2, E. Elevation = 154.50 City Datum (1341.90 NGVD29)
- #2. "X" Cut in Sidewalk 536.4 ft. East of Smithmoor & 45.6 ft. South of Harry St. Elevation = 155.14 City Datum (1342.54 NGVD29)



Scale: 1" = 60' Horizontal  
• = Iron



Remove Existing Ring and Cover and Replace with Bolted & Gasketed Ring & Cover. All Costs Shall be Included in Bid Item, "MH Adj, w/ New Ring & Cover."

Remove Existing Ring and Cover and Replace with Bolted & Gasketed Ring & Cover. All Costs Shall be Included in Bid Item, "MH Adj, w/ New Ring & Cover."

Adjust Existing SSMH from Elev. = 145.35 to Elev. = 149.00. All Costs Shall be Included in Bid Item, "MH Adj, w/o New Ring & Cover."

Contractor to coordinate manhole adjustments with C.O.W. SWD #212 Project.

CRYSTAL CREEK ADDITION <b>MANHOLE ADJUSTMENTS</b> WICHITA, KS				
<b>BAUGHMAN COMPANY P.A.</b> ENGINEERING, SURVEYING, & PLANNING 316-282-7271 • 316 ELLIS • WICHITA, KANSAS 67211				
PROJECT NUMBER <b>472-83818</b>				
DESIGN NBW	DRAWN AEC	APPROVED	DATE 1/04	SCALE NOTED
				SHEET <b>27</b> OF <b>57</b>