

Lateral 2, Main 19, FMC  
SANITARY SEWER IMPROVEMENTS  
to serve

**STONEBRIDGE 2ND ADDITION - PH. II**

CITY OF WICHITA, KANSAS

James L. Armour, P.E. City Engineer

Project Number

468-84147

O.C.A. Number

744319

**Benchmarks**

BM #1: "□" Cut on top of curb, east side of Ridgehurst, adjacent to common front lot corner of Lots 6 & 7, Block E, Stonebridge 2nd Addition. ELEV. = 1348.51 NGVD29

BM #2: "□" Cut on top of curb, south side of Sundance, near end of pavement in front of Lot 6, Block 3, Savannah at Castle Rock Ranch 7th Addition. ELEV. = 1347.33 NGVD29

**Sheet Index**

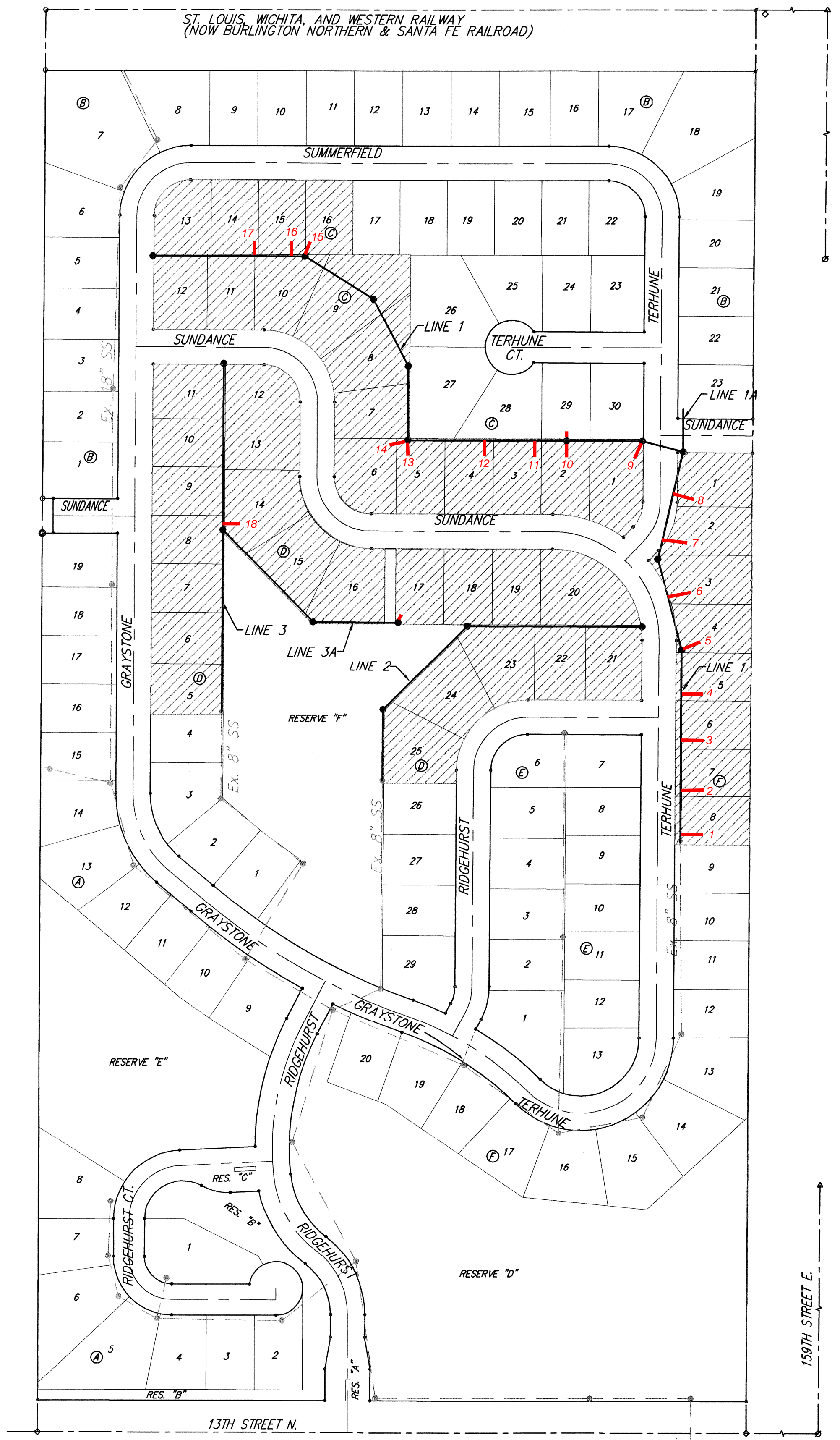
Title Sheet	1
Line 1	2-4
Line 2	5
Line 2A	6
Line 3	7
Standard Manhole Detail	8
Ring & Cover Detail	9
Vertical Riser Detail	10
Erosion Control/Esmt. Grading Plan	11
Erosion Control BMP Details	12-15
Coordinate Sheet	16
Copy of Plat	17

**GENERAL NOTES:**

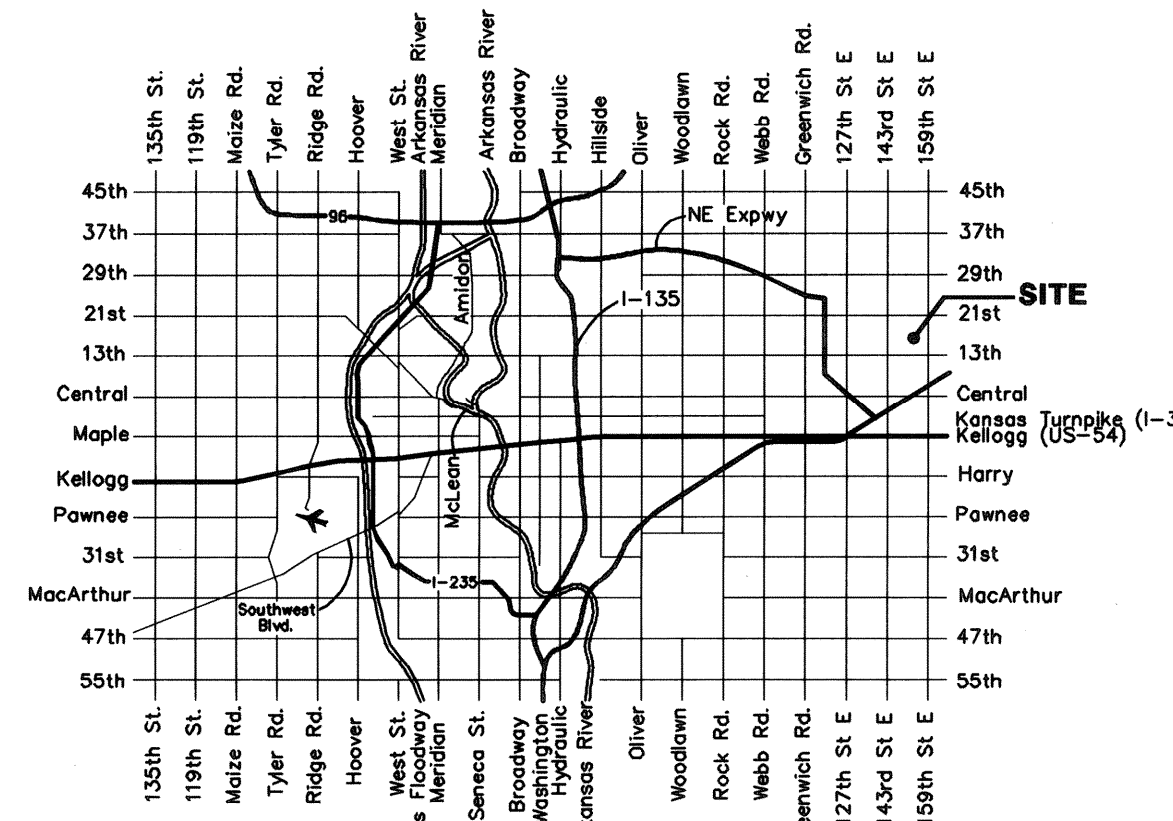
- Contractor will be required to provide notice to utility companies a minimum of seventy-two (72) hours prior to any excavation, as follows:  
  

Kansas One-Call	687-2470
Cox Communications	262-4270
Kansas Gas Service	1-888-482-4950
Westar Energy	383-8650
Black Hills Energy	1-800-303-0357
AT&T	268-2245
City of Wichita Water Dept.	268-4563
City of Wichita Sewer Maint.	268-4024
City of Wichita Storm Sewer Maint.	268-4090
City of Wichita Traffic Maint.	268-4034
Conoco Phillips Pipeline Co.	1-877-267-2290
Southern Star Pipeline Co.	529-6600
Kinder-Morgan Pipeline Co.	1-888-844-5658

The Contractor must notify the following in case of an emergency:
- Utility service lines, poles, valve boxes, meters, and etcetera are to be adjusted as necessary by others prior to construction unless the plans specifically call for their adjustment by the Contractor or unless the plans specifically identify a utility to be adjusted by its owner during construction. Existing utilities and their location, as shown on the plans, represent the best information obtainable for design. The Contractor will be required to work around existing utilities within the right-of-way which do not conflict with proposed construction.
- Rubble from the removal of miscellaneous structures can be disposed of on site. All excess excavation shall remain on site. These sites shall be approved by the Engineer as to suitability, appearance, and site location. Locations, in the opinion of the Engineer, that will leave an unsightly appearance will not be approved. All disposal sites must be approved by the Kansas Department of Health and Environment. Material either stockpiled or disposed of in a flood plain would require a Kansas State Board of Agriculture permit. Any material dumped in waters of the United States or wetlands is subject to U.S. Corps. of Engineers permitting regulations. Any material buried or stockpiled beyond approved construction limits would require additional archaeological investigations unless buried in a previously approved borrow location.
- Trees and shrubs in public right-of-way which are in direct conflict with proposed new construction shall be removed by the Contractor with the Engineer's approval. Trees and shrubs which are not in direct conflict with proposed new construction shall be saved and protected from damage.
- The Contractor shall give all property owners and/or tenants of developed property abutting the construction of this project a minimum of ten (10) days notice prior to start of construction.
- The Contractor shall be responsible for preserving property irons. The Contractor will be required to re-establish any property irons which are damaged or destroyed by his construction operations. Such irons shall be re-established by a licensed land surveyor in accordance with state laws.
- All existing and proposed erosion control measures including silt fencing, erosion control mat, straw bales, inlet barriers, and const. entrance shall be maintained throughout construction by the contractor and until project is accepted by the City of Wichita. The on-site engineer shall complete weekly reports on the status of erosion control measures. The contractor shall be required to comply with maintenance and/or replacement of erosion control measures as determined by the on-site engineer until project is accepted by City of Wichita. Maintenance and/or replacement of erosion control measures to be paid by L.S. bid item "Maintain Existing BMP's".
- The Contractor shall be responsible for maintaining continuous flow of sewage through construction. Contractor's proposed method for maintaining sewage flow shall be approved by the Engineer. Cost of maintaining flow of sewage through construction will not be paid for directly and this cost shall be considered as subsidiary to the other pay items of work.
- All areas disturbed during construction shall be seeded at 300 lbs./acre with Rye Grass immediately following construction in that area. Contractor shall prepare ground per City Specifications.
- The developer for this project is FLKS Land Development (316) 641-3268.



Benefit District



**BENCHMARKS:**  
 BM #1: "□" Cut on top of curb, east side of Ridgehurst, adjacent to common front lot corner of Lots 6 & 7, Block E, Stonebridge 2nd Addition.  
 ELEV. = 1348.51 NGVD29

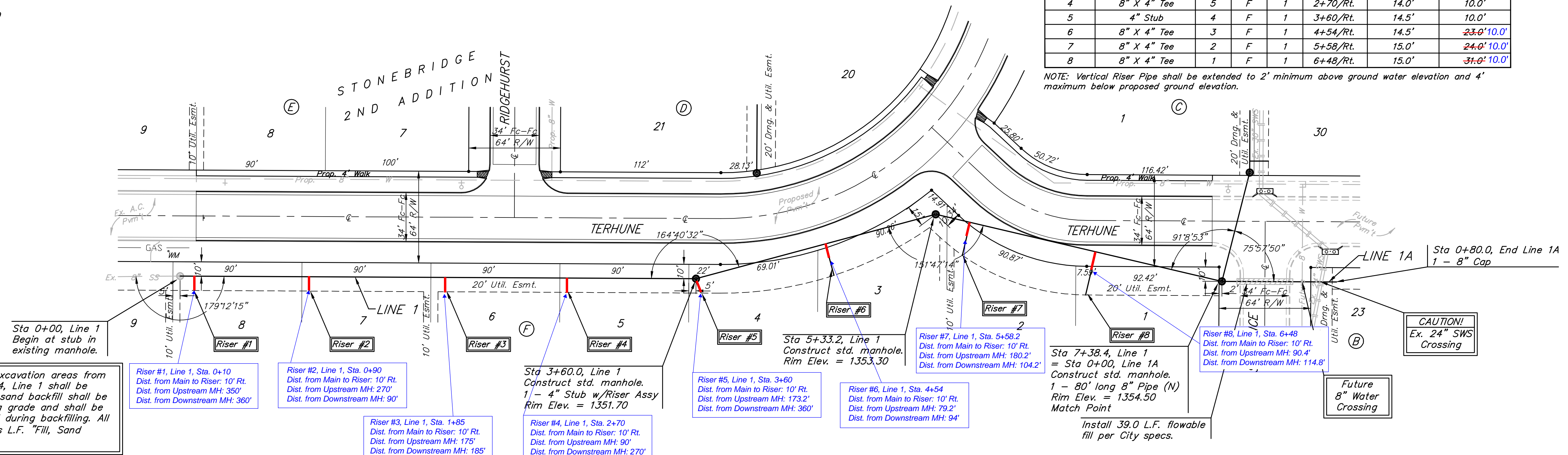
BM #2: "□" Cut on top of curb, south side of Sundance, near end of pavement in front of Lot 6, Block 3, Savannah at Castle Rock Ranch 7th Addition.  
 ELEV. = 1347.33 NGVD29

SEWER SERVICE TABLE

NUMBER	TYPE	LOCATION			FOR INFORMATION ONLY		
		LOT NO.	BLOCK NO.	LINE NO.	STATION \ DIRECTION	APPROXIMATE LENGTH 4" PIPE	
					VERTICAL	HORIZONTAL	
1	8" X 4" Tee	8	F	1	0+10/Rt.	12.0'	10.0'
2	8" X 4" Tee	7	F	1	0+90/Rt.	13.0'	10.0'
3	8" X 4" Tee	6	F	1	1+85/Rt.	13.5'	10.0'
4	8" X 4" Tee	5	F	1	2+70/Rt.	14.0'	10.0'
5	4" Stub	4	F	1	3+60/Rt.	14.5'	10.0'
6	8" X 4" Tee	3	F	1	4+54/Rt.	14.5'	23.0' 10.0'
7	8" X 4" Tee	2	F	1	5+58/Rt.	15.0'	24.0' 10.0'
8	8" X 4" Tee	1	F	1	6+48/Rt.	15.0'	31.0' 10.0'

Scale: 1" = 40' Horizontal  
 1" = 5' Vertical  
 • = Iron

NOTE: Vertical Riser Pipe shall be extended to 2' minimum above ground water elevation and 4' maximum below proposed ground elevation.



All trench and manhole excavation areas from Sta. 0+00 to Sta. 7+38.4, Line 1 shall be backfilled with sand. The sand backfill shall be within two feet of existing grade and shall be water-jetted and vibrated during backfilling. All costs shall be paid for as L.F. "Fill, Sand (Flushed and Vibrated)".

Riser #1, Line 1, Sta. 0+10  
 Dist. from Main to Riser: 10' Rt.  
 Dist. from Upstream MH: 350'  
 Dist. from Downstream MH: 360'

Riser #2, Line 1, Sta. 0+90  
 Dist. from Main to Riser: 10' Rt.  
 Dist. from Upstream MH: 270'  
 Dist. from Downstream MH: 90'

Riser #3, Line 1, Sta. 1+85  
 Dist. from Main to Riser: 10' Rt.  
 Dist. from Upstream MH: 175'  
 Dist. from Downstream MH: 185'

Riser #4, Line 1, Sta. 2+70  
 Dist. from Main to Riser: 10' Rt.  
 Dist. from Upstream MH: 90'  
 Dist. from Downstream MH: 270'

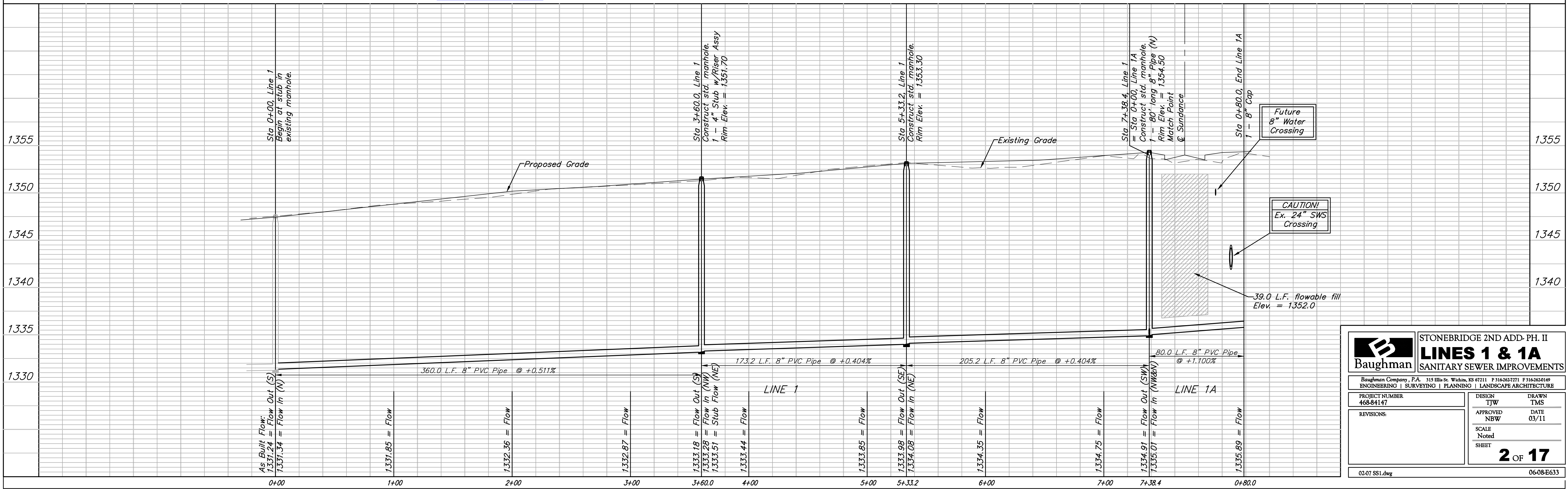
Riser #5, Line 1, Sta. 3+60  
 Dist. from Main to Riser: 10' Rt.  
 Dist. from Upstream MH: 173.2'  
 Dist. from Downstream MH: 360'

Riser #6, Line 1, Sta. 4+54  
 Dist. from Main to Riser: 10' Rt.  
 Dist. from Upstream MH: 79.2'  
 Dist. from Downstream MH: 94'

Riser #7, Line 1, Sta. 5+58.2  
 Dist. from Main to Riser: 10' Rt.  
 Dist. from Upstream MH: 180.2'  
 Dist. from Downstream MH: 104.2'

Riser #8, Line 1, Sta. 6+48  
 Dist. from Main to Riser: 10' Rt.  
 Dist. from Upstream MH: 90.4'  
 Dist. from Downstream MH: 114.8'

Install 39.0 L.F. flowable fill per City specs.



**Baughman** STONEBRIDGE 2ND ADD. PH. II  
**LINES 1 & 1A**  
 SANITARY SEWER IMPROVEMENTS

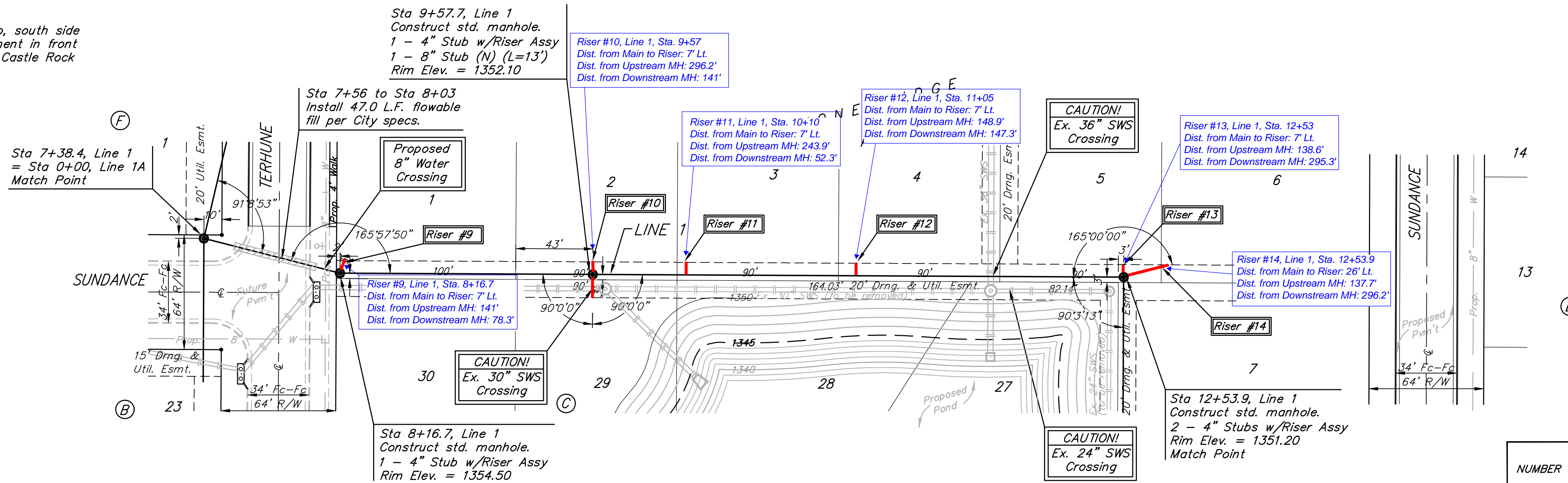
PROJECT NUMBER: 468-84147  
 DESIGN: TJW  
 DRAWN: TMS  
 APPROVED: NBW  
 DATE: 03/11  
 SCALE: Noted  
 SHEET: 2 OF 17

02-07 SS1.dwg 06-08-E633

**BENCHMARKS:**

BM #1: "□" Cut on top of curb, east side of Ridgehurst, adjacent to common front lot corner of Lots 6 & 7, Block E, Stonebridge 2nd Addition.  
ELEV. = 1348.51 NGVD29

BM #2: "□" Cut on top of curb, south side of Sundance, near end of pavement in front of Lot 6, Block 3, Savannah at Castle Rock Ranch 7th Addition.  
ELEV. = 1347.33 NGVD29

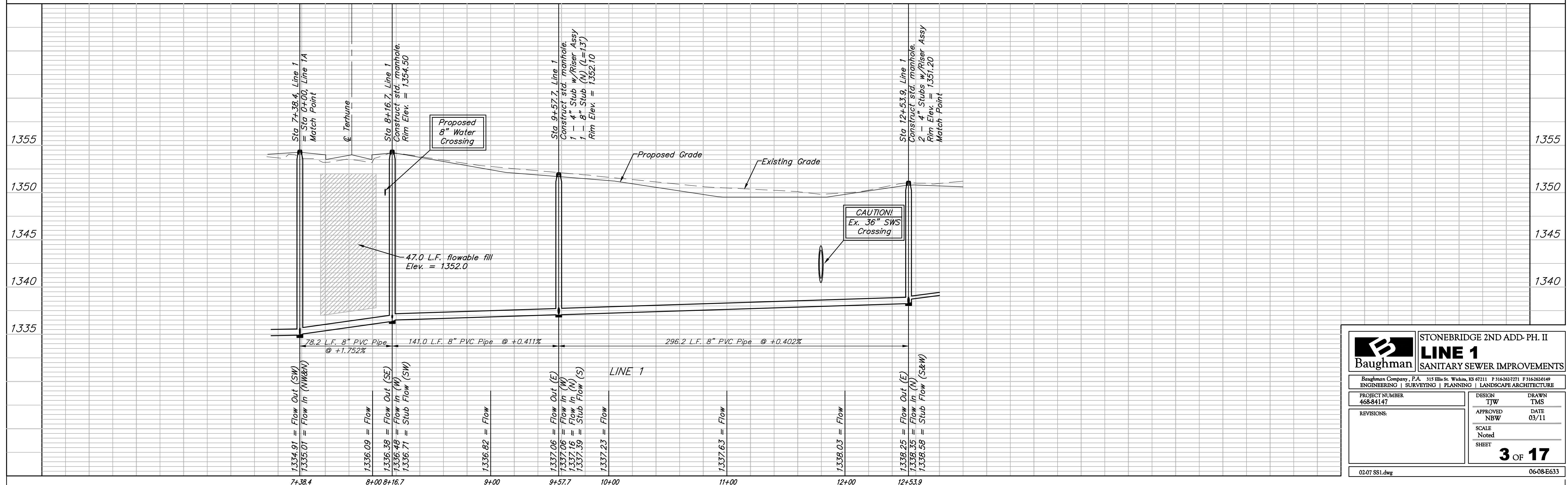


Scale: 1" = 40' Horizontal  
1" = 5' Vertical  
• = Iron

SEWER SERVICE TABLE

NUMBER	TYPE	LOCATION			FOR INFORMATION ONLY		
		LOT NO.	BLOCK NO.	LINE NO.	STATION \ DIRECTION	APPROXIMATE LENGTH 4" PIPE	
9	4" Stub	1	C	1	8+16.7/Lt.	14.0'	7.0'
10	4" Stub	2	C	1	9+57.7/Lt.	10.5'	7.0'
11	8" X 4" Tee	3	C	1	10+10/Lt.	10.5'	7.0'
12	8" X 4" Tee	4	C	1	11+05/Lt.	8.0'	7.0'
13	4" Stub	5	C	1	12+53.9/Lt.	8.5'	7.0'
14	4" Stub	6	C	1	12+53.9/Lt.	8.5'	26.0'

NOTE: Vertical Riser Pipe shall be extended to 2' minimum above ground water elevation and 4' maximum below proposed ground elevation.



**Baughman** ENGINEERING | SURVEYING | PLANNING | LANDSCAPE ARCHITECTURE

STONEBRIDGE 2ND ADD. PH. II  
**LINE 1**  
SANITARY SEWER IMPROVEMENTS

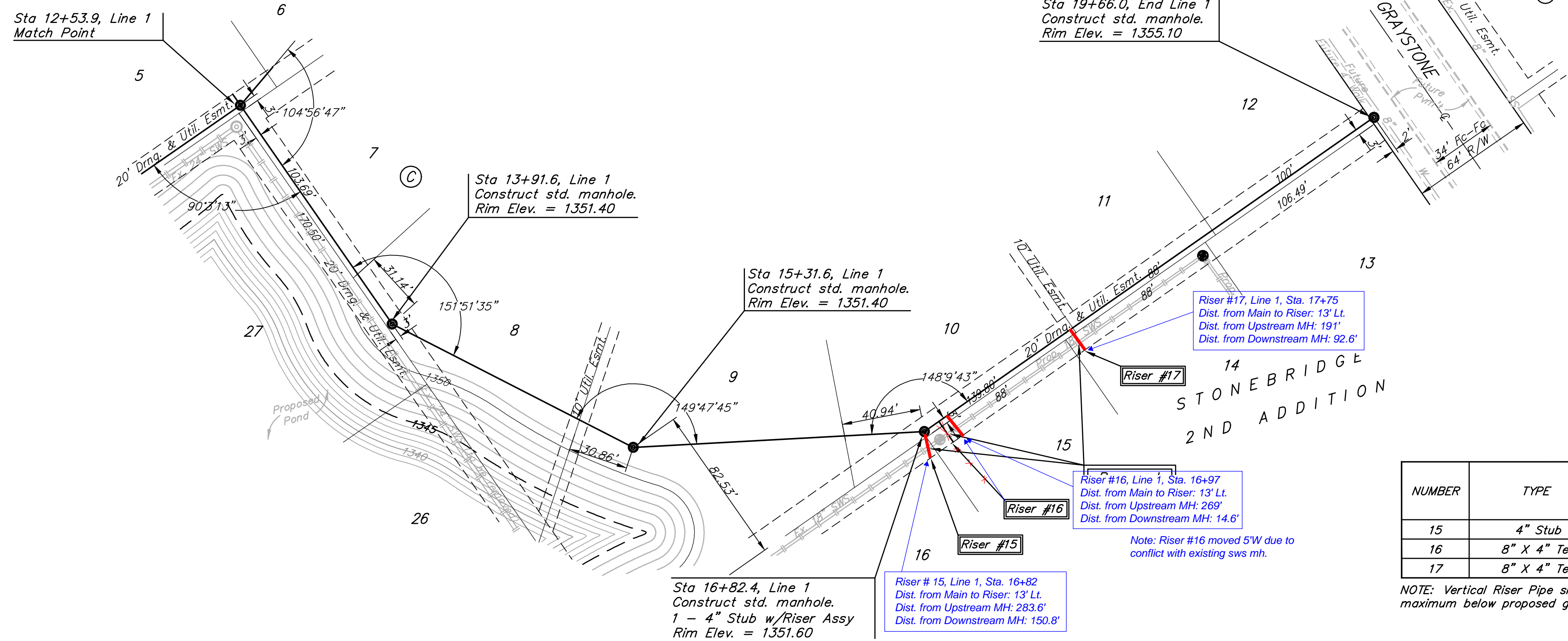
PROJECT NUMBER: 468-84147  
DESIGN: TJW  
DRAWN: TMS  
APPROVED: NBW  
DATE: 03/11  
SCALE: Noted  
SHEET: 3 OF 17

02-07 SS1.dwg 06-08-E633

**BENCHMARKS:**

BM #1: "□" Cut on top of curb, east side of Ridgehurst, adjacent to common front lot corner of Lots 6 & 7, Block E, Stonebridge 2nd Addition.  
ELEV. = 1348.51 NGVD29

BM #2: "□" Cut on top of curb, south side of Sundance, near end of pavement in front of Lot 6, Block 3, Savannah at Castle Rock Ranch 7th Addition.  
ELEV. = 1347.33 NGVD29

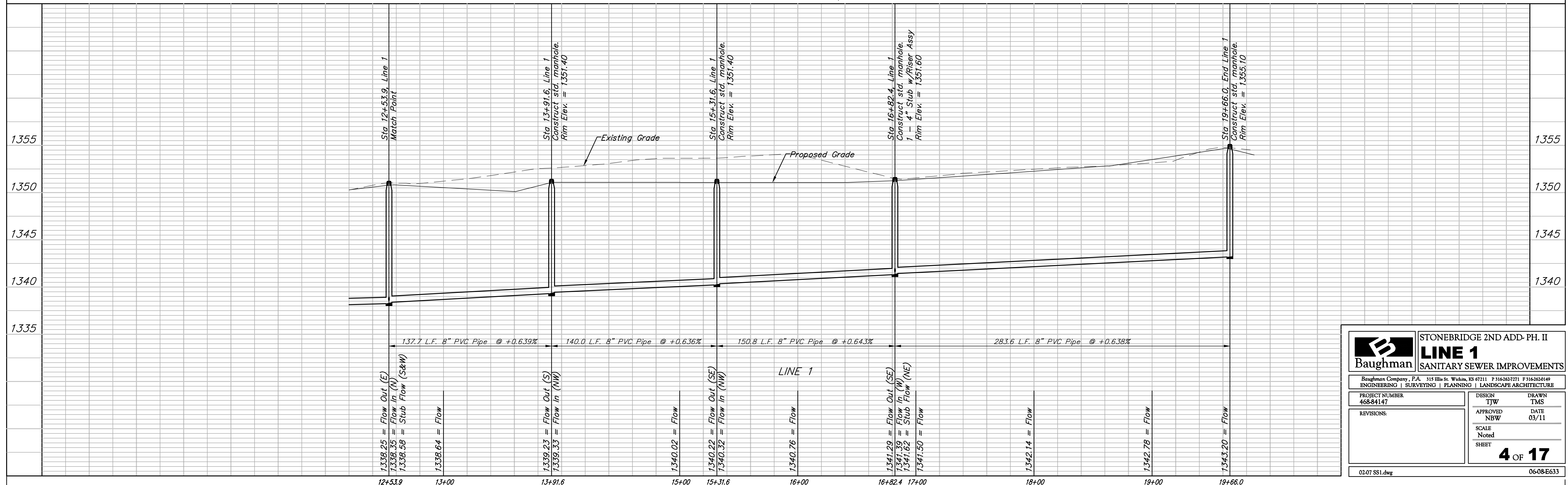


Scale: 1" = 40' Horizontal  
1" = 5' Vertical  
• = Iron

SEWER SERVICE TABLE

NUMBER	TYPE	LOCATION			FOR INFORMATION ONLY	
		LOT NO.	BLOCK NO.	LINE NO. STATION\ DIRECTION	APPROXIMATE LENGTH 4" PIPE	VERTICAL HORIZONTAL
15	4" Stub	16	C	1 16+82.4/Rt.	5.5'	13.0'
16	8" X 4" Tee	15	C	1 16+97 Rt.	5.5'	13.0'
17	8" X 4" Tee	14	C	1 17+75/Rt.	5.5'	13.0'

NOTE: Vertical Riser Pipe shall be extended to 2' minimum above ground water elevation and 4' maximum below proposed ground elevation.



**Baughman** STONEBRIDGE 2ND ADD. PH. II  
**LINE 1**  
SANITARY SEWER IMPROVEMENTS

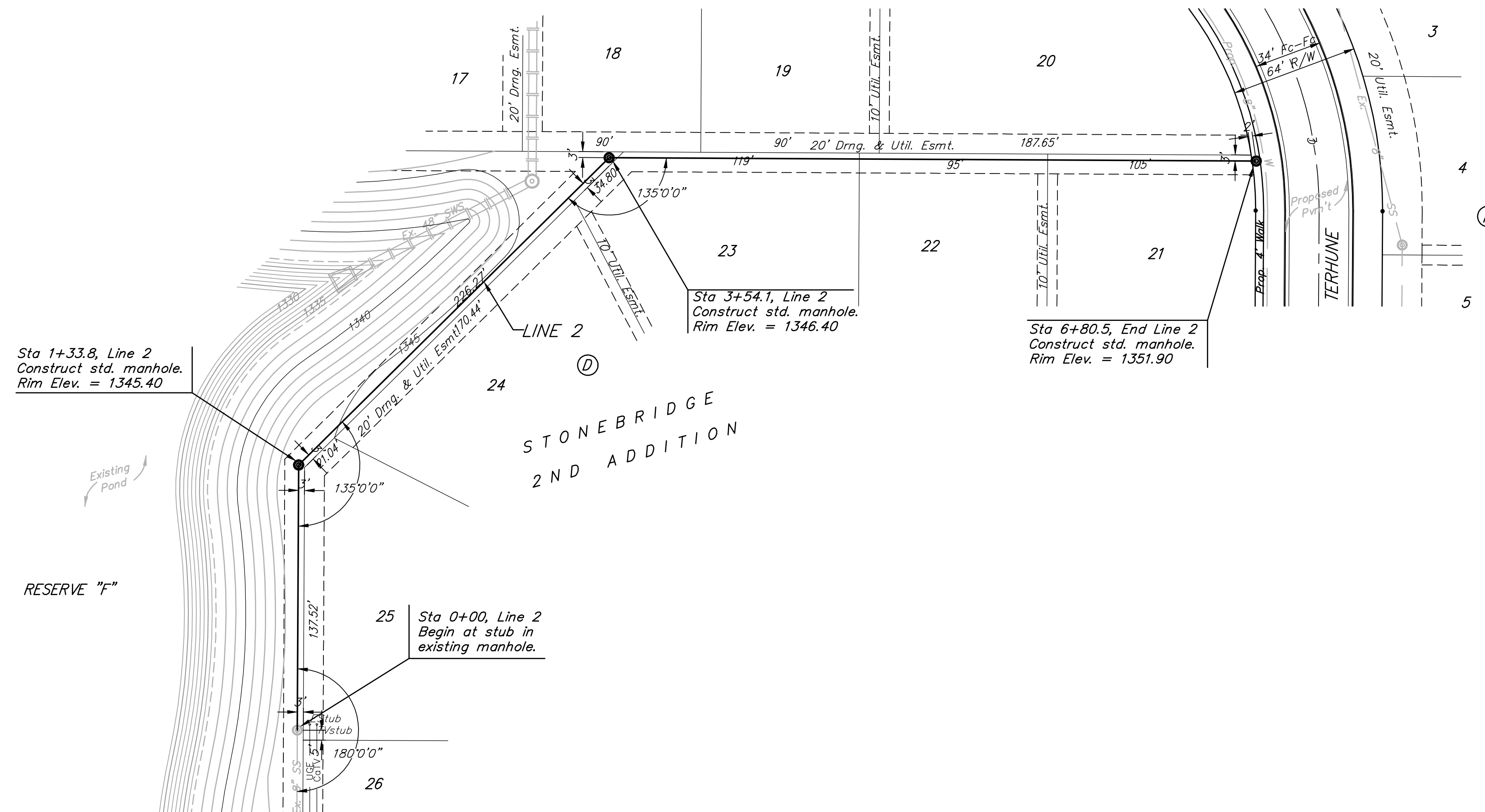
Baughman Company, P.A. 315 Ellis St. Wichita, KS 67211 P 316-262-7271 F 316-262-6149  
ENGINEERING | SURVEYING | PLANNING | LANDSCAPE ARCHITECTURE

PROJECT NUMBER: 468-84147  
DESIGN: TJW  
DRAWN: TMS  
APPROVED: NBW  
DATE: 03/11  
SCALE: Noted  
SHEET: 4 OF 17

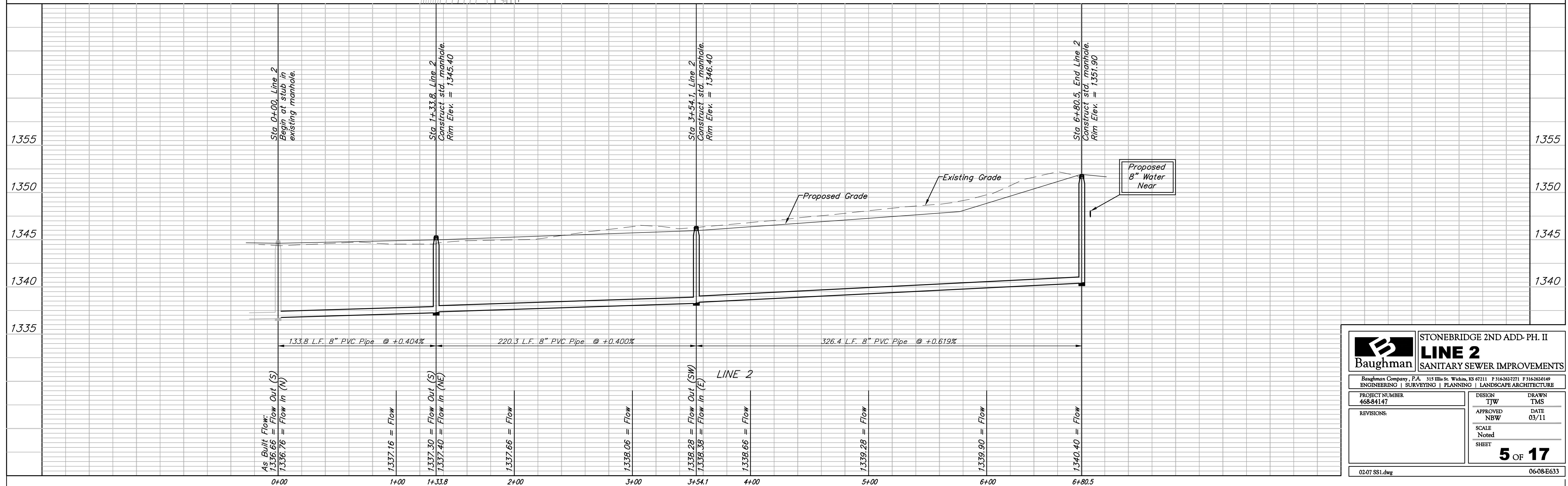
02-07 SS1.dwg 06-08-E633

**BENCHMARKS:**  
 BM #1: "□" Cut on top of curb, east side of Ridgehurst, adjacent to common front lot corner of Lots 6 & 7, Block E, Stonebridge 2nd Addition.  
 ELEV. = 1348.51 NGVD29

BM #2: "□" Cut on top of curb, south side of Sundance, near end of pavement in front of Lot 6, Block 3, Savannah at Castle Rock Ranch 7th Addition.  
 ELEV. = 1347.33 NGVD29



Scale: 1" = 40' Horizontal  
 1" = 5' Vertical  
 • = Iron

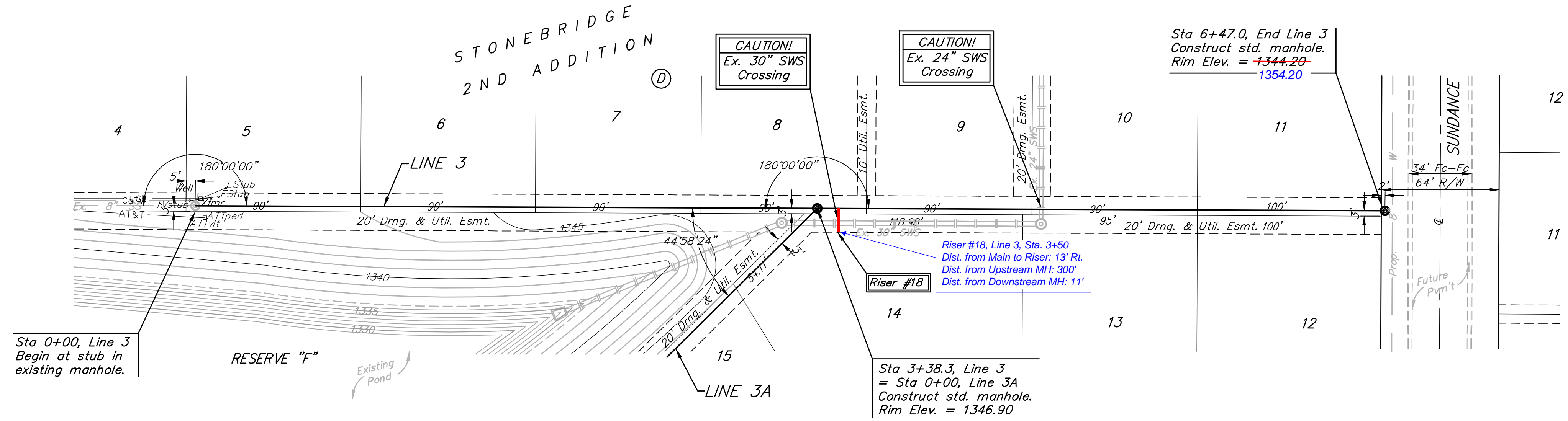


		STONEBRIDGE 2ND ADD- PH. II	
		<b>LINE 2</b>	
PROJECT NUMBER <b>468-84147</b>		DESIGN TJW	
REVISIONS:		APPROVED NBW	
SCALE Noted		DRAWN TMS	
SHEET		DATE 03/11	
02-07 SS1.dwg		<b>5 OF 17</b>	
06-08-E633			

**BENCHMARKS:**  
 BM #1: "□" Cut on top of curb, east side of Ridgehurst, adjacent to common front lot corner of Lots 6 & 7, Block E, Stonebridge 2nd Addition.  
 ELEV. = 1348.51 NGVD29

BM #2: "□" Cut on top of curb, south side of Sundance, near end of pavement in front of Lot 6, Block 3, Savannah at Castle Rock Ranch 7th Addition.  
 ELEV. = 1347.33 NGVD29

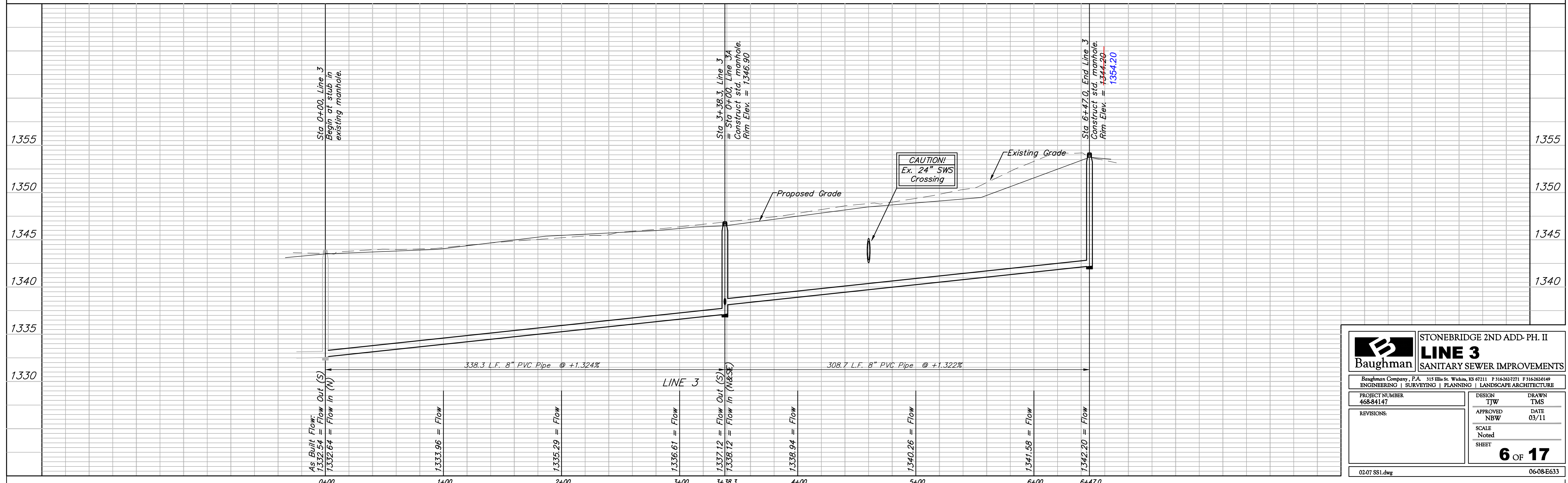
Scale: 1" = 40' Horizontal  
 1" = 5' Vertical  
 • = Iron



SEWER SERVICE TABLE

NUMBER	TYPE	LOCATION			FOR INFORMATION ONLY	
		LOT NO.	BLOCK NO.	LINE NO.	STATION \ DIRECTION	APPROXIMATE LENGTH 4" PIPE
18	8" X 4" Tee	14	D	3	3+50/Rt.	VERTICAL: 4.5' HORIZONTAL: 13.0'

NOTE: Vertical Riser Pipe shall be extended to 2' minimum above ground water elevation and 4' maximum below proposed ground elevation.



**Baughman** STONEBRIDGE 2ND ADD- PH. II  
**LINE 3**  
 SANITARY SEWER IMPROVEMENTS

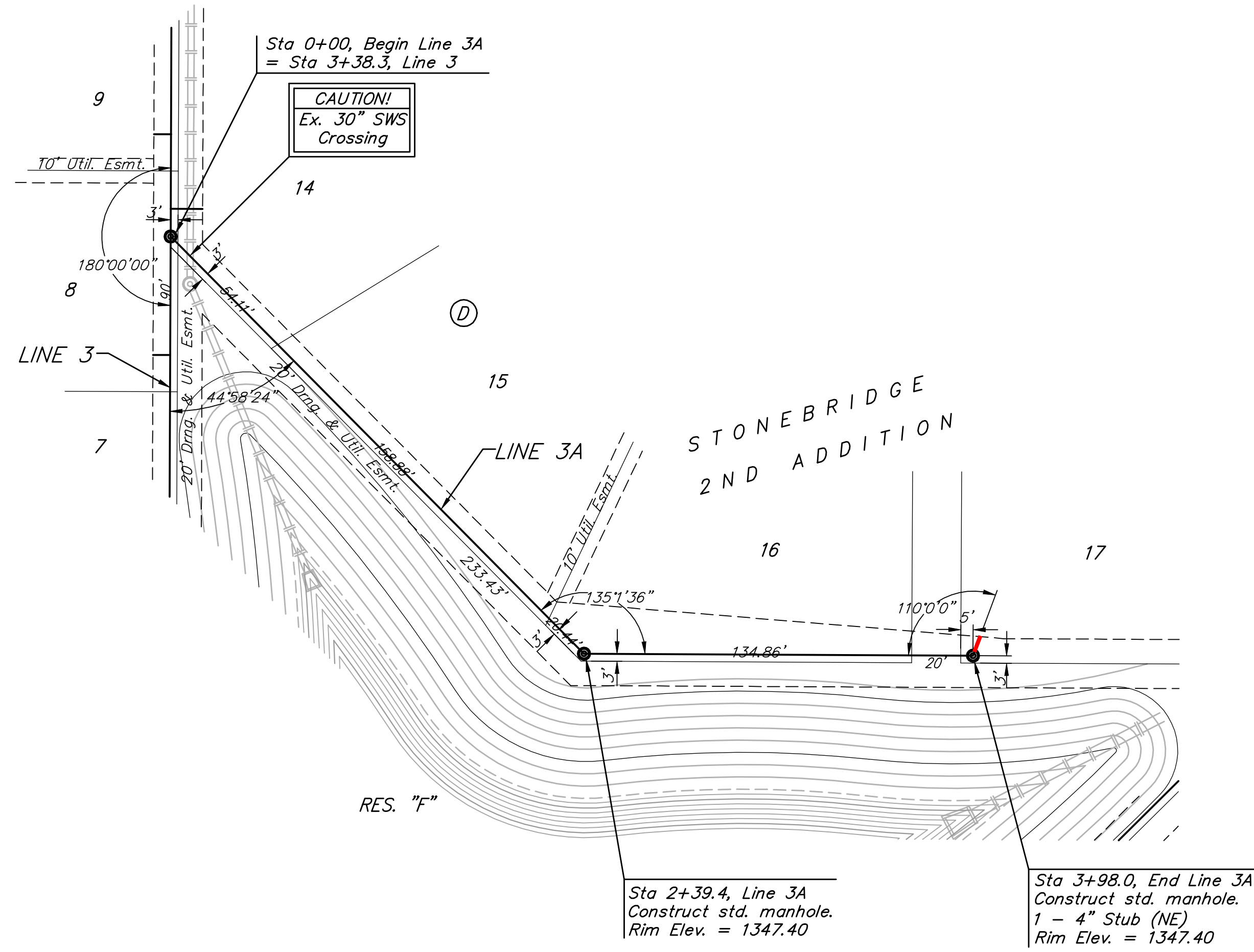
PROJECT NUMBER: 468-84147  
 DESIGN: TJW  
 DRAWN: TMS  
 APPROVED: NBW  
 DATE: 03/11  
 SCALE: Noted  
 SHEET: 6 OF 17

02-07 SS1.dwg 06-08-E633

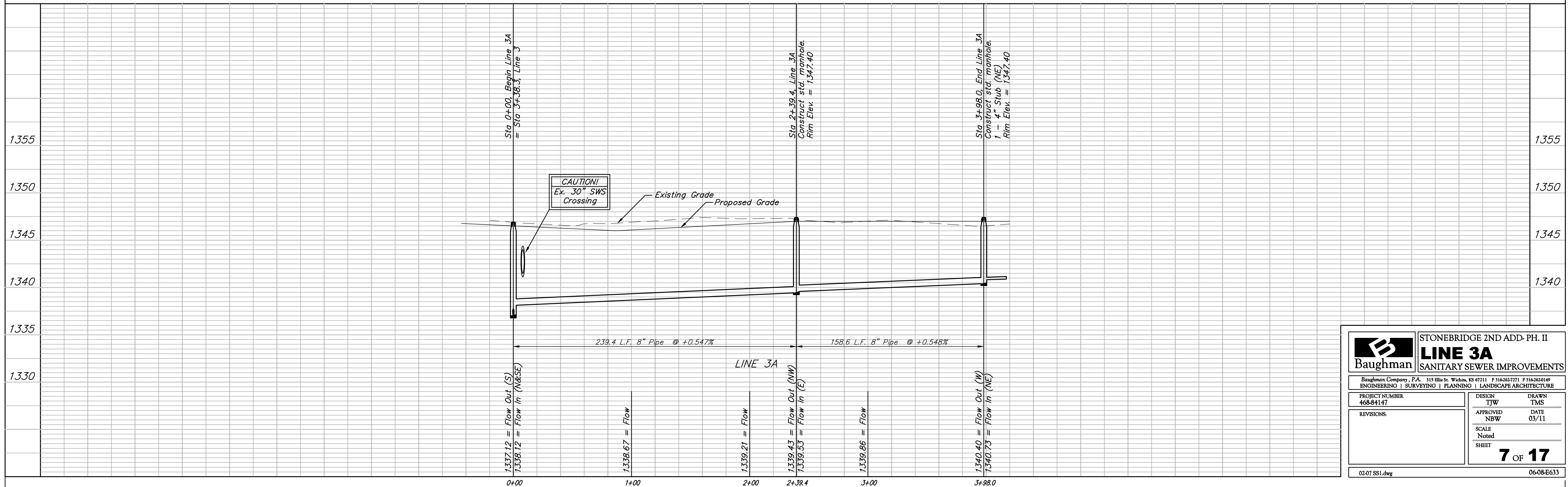
**BENCHMARKS:**

BM #1: "□" Cut on top of curb, east side of Ridgehurst, adjacent to common front lot corner of Lots 6 & 7, Block E, Stonebridge 2nd Addition.  
ELEV. = 1348.51 NGVD29

BM #2: "□" Cut on top of curb, south side of Sundance, near end of pavement in front of Lot 6, Block 3, Savannah at Castle Rock Ranch 7th Addition.  
ELEV. = 1347.33 NGVD29



Scale: 1" = 40' Horizontal  
1" = 5' Vertical  
• = Iron



		<b>STONEBRIDGE 2ND ADD- PH. II</b> <b>LINE 3A</b> SANITARY SEWER IMPROVEMENTS	
<small>Baughman Company, P.A. 315 Ellis St. Wichita, KS 67211 P 316-262-7271 F 316-262-0149          ENGINEERING   SURVEYING   PLANNING   LANDSCAPE ARCHITECTURE</small>			
PROJECT NUMBER <b>468-84147</b>	DESIGN TJW	DRAWN TMS	DATE 03/11
REVISIONS:	APPROVED NBW	SCALE Noted	SHEET <b>7 OF 17</b>
<small>02-07 SS1.dwg</small>		<small>06-08-E633</small>	

