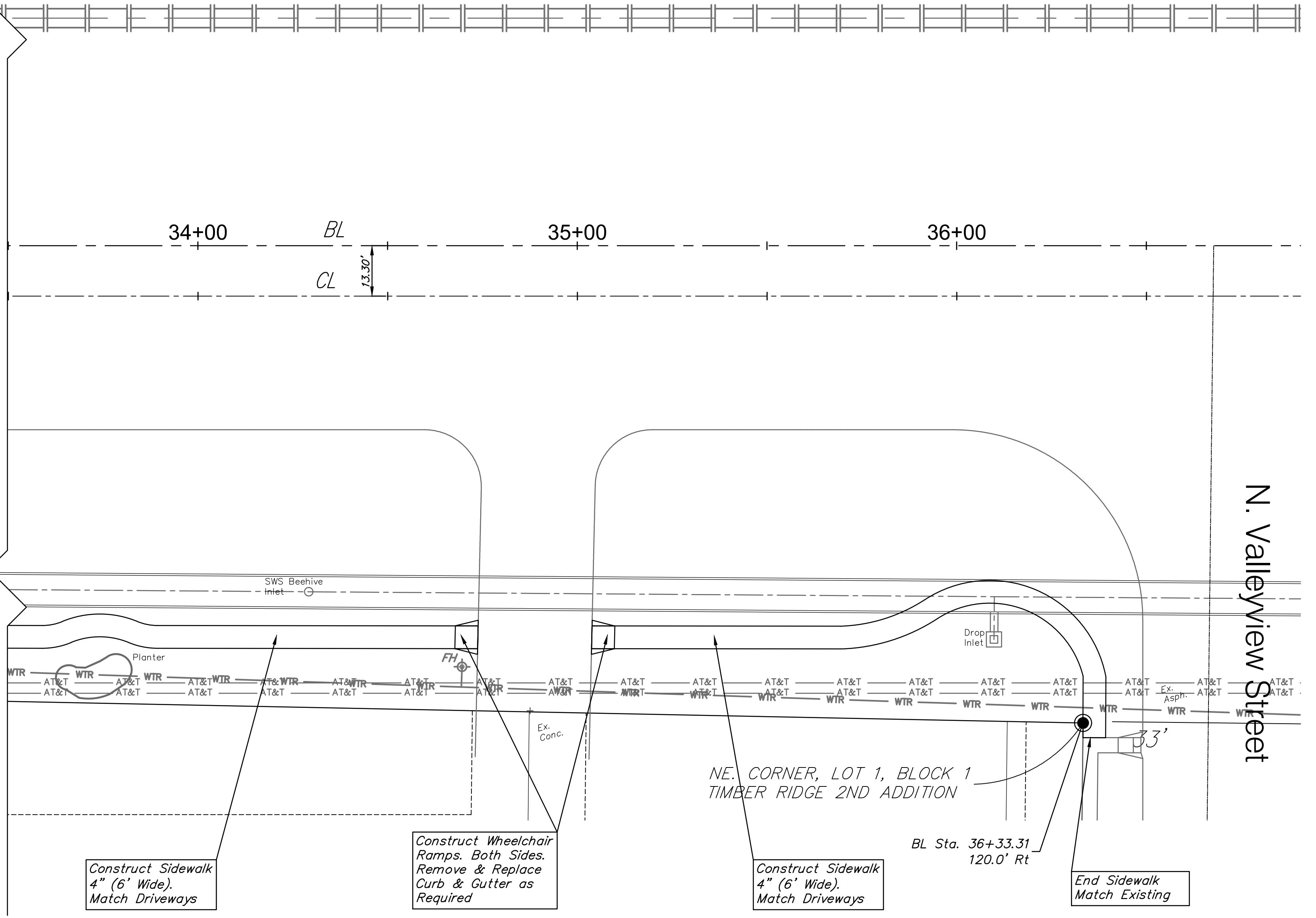


NOTE:
Additional Hand-Form Concrete Work to Dowel & Tie into Proposed Curb Shall be SUBSIDIARY to L.F. Concrete Flume Bid Item.



Note:
Trees/Shrubs to be removed are marked thus:

Note:
Pavement, Sidewalks, and Etc. To Be Removed Are Indicated By:

Drawing File: E:\Projects\21st & Maize_1004E492\Civil 3d\base
 Design: T. Ariere
 Drawn: JDM
 Approved: T. Ariere
 Scale: 1"=20'
 Project No. 1004E492 CAPITAL IMPROVEMENT PROJECT
 21st STREET PAVING
 Sta. 30+00 to Sta. 36+39.26
 21st STREET / MAIZE ROAD INTERSECTION

Baughman Company, P.A.
 315 Ellis St. Wichita, KS 67211 P 316-262-7271 F 316-262-0149
 ENGINEERING | SURVEYING | PLANNING | LANDSCAPE ARCHITECTURE

JANUARY, 2012
 SHEET 18 OF 65