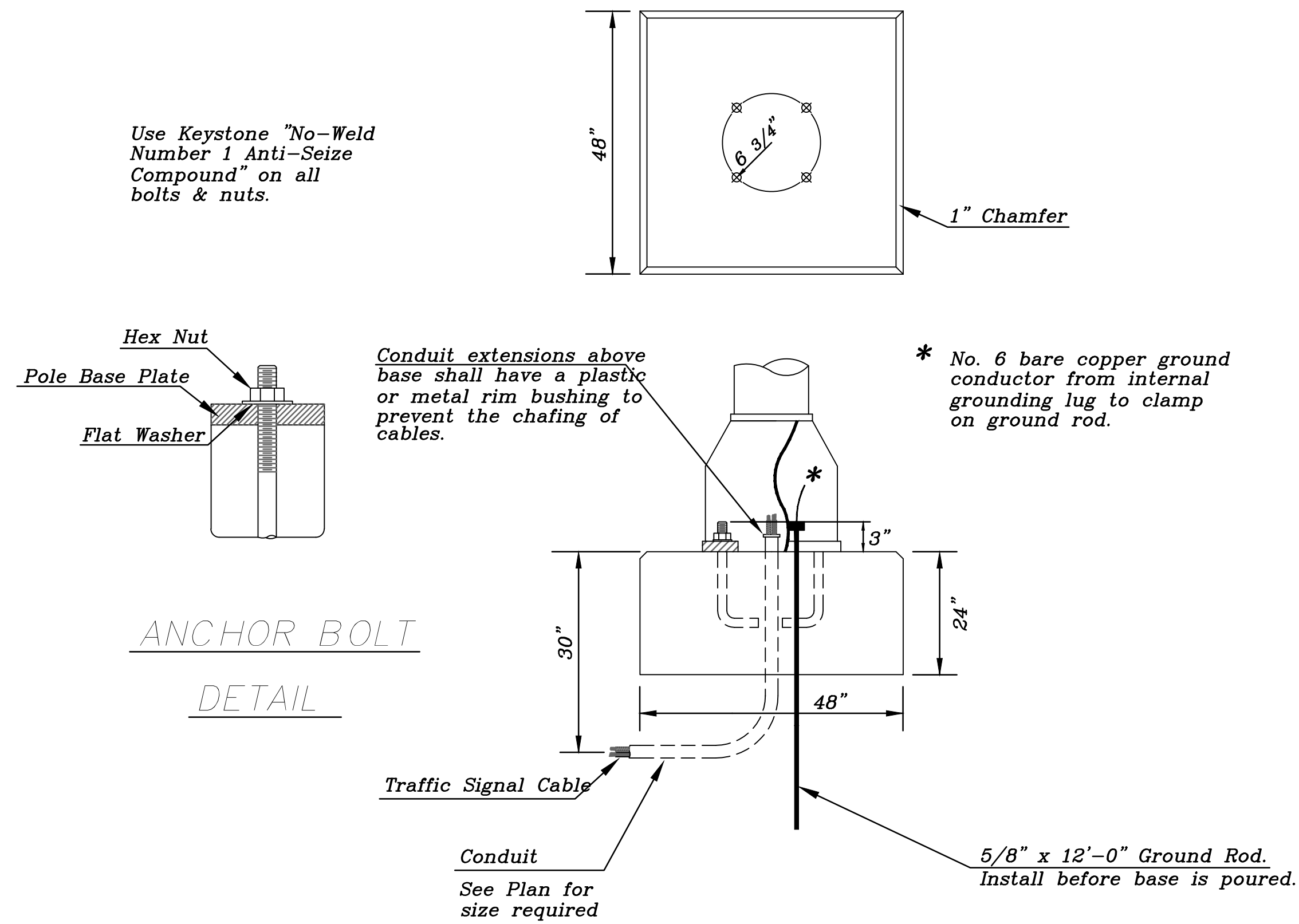
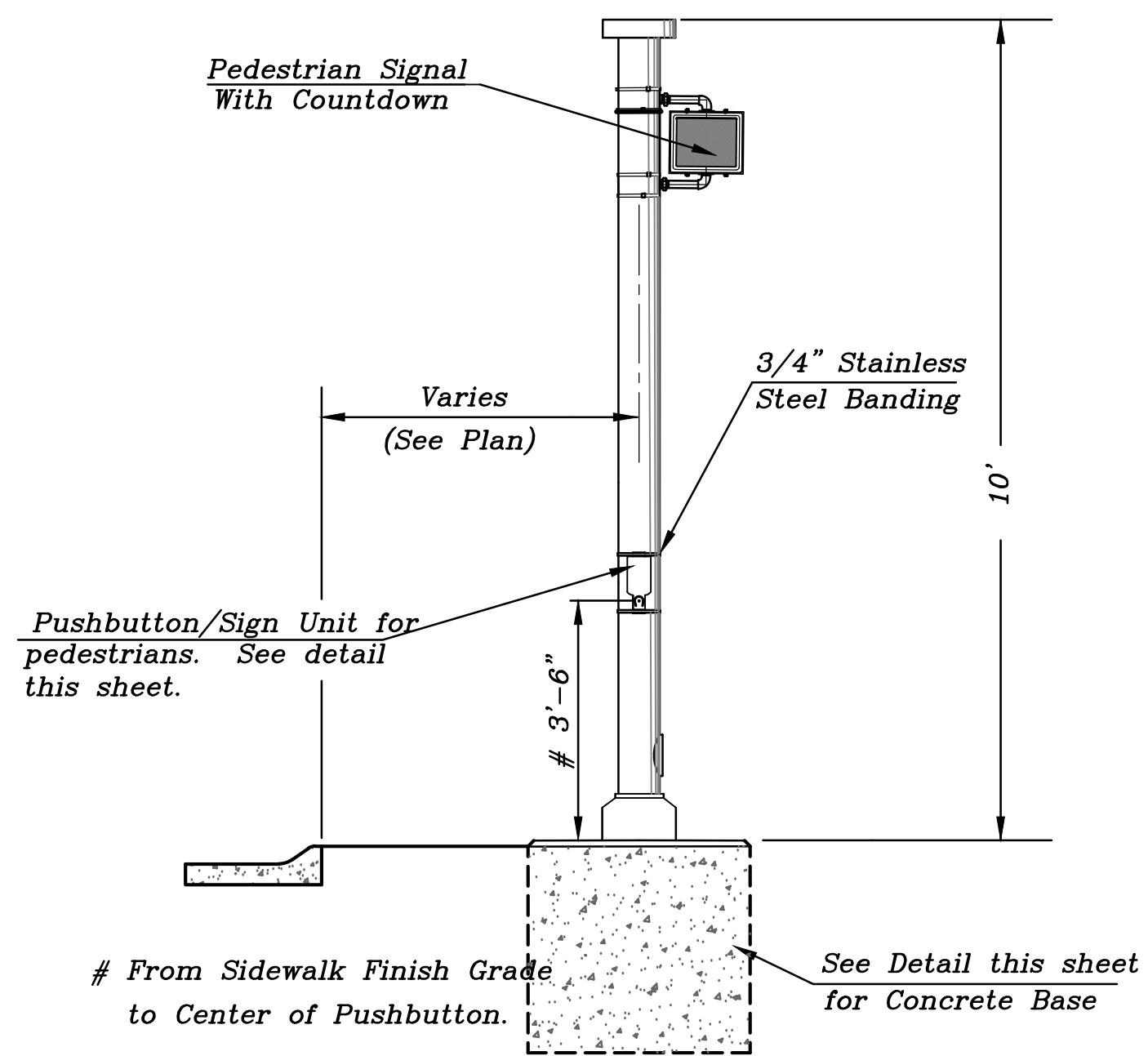
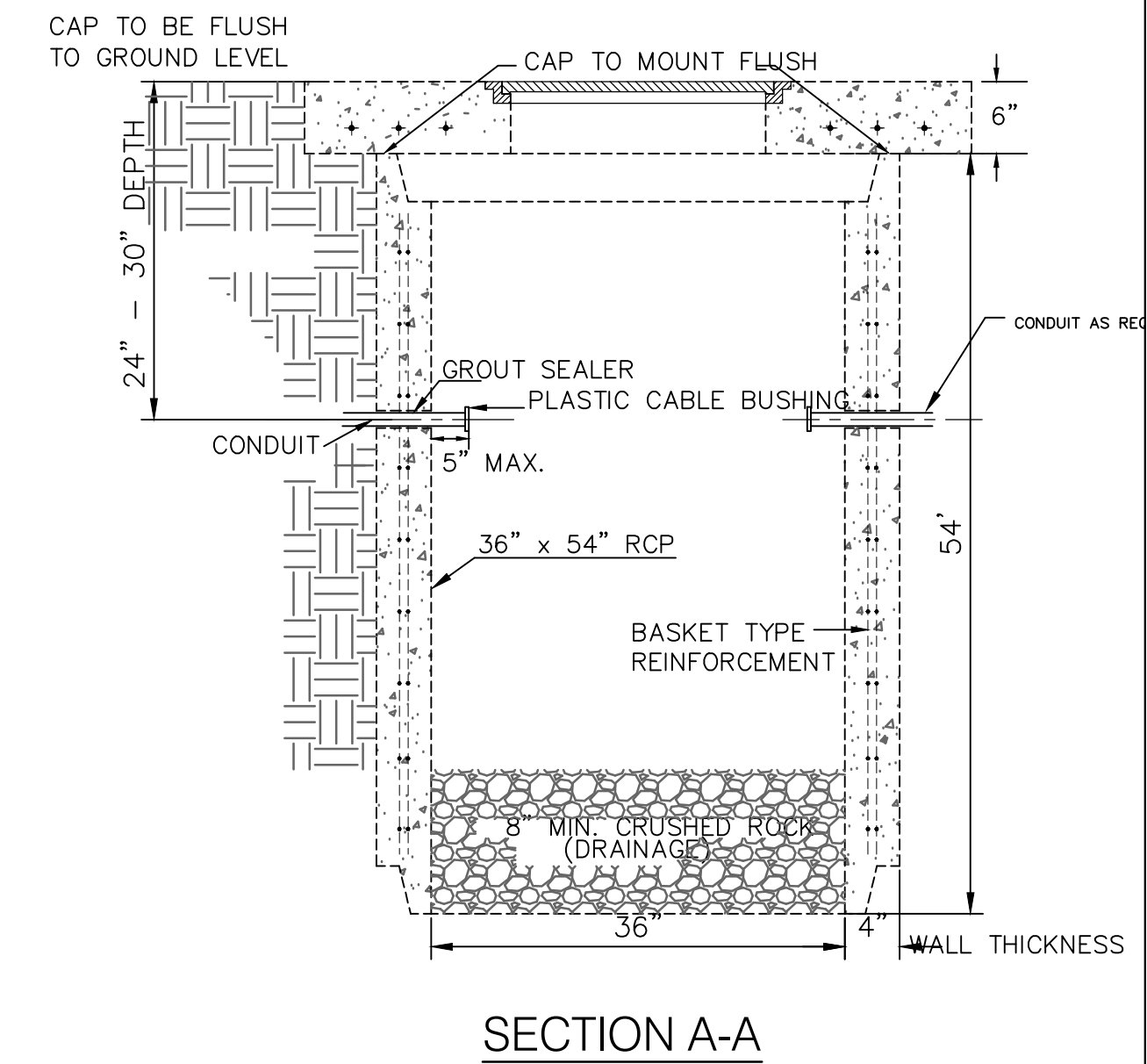
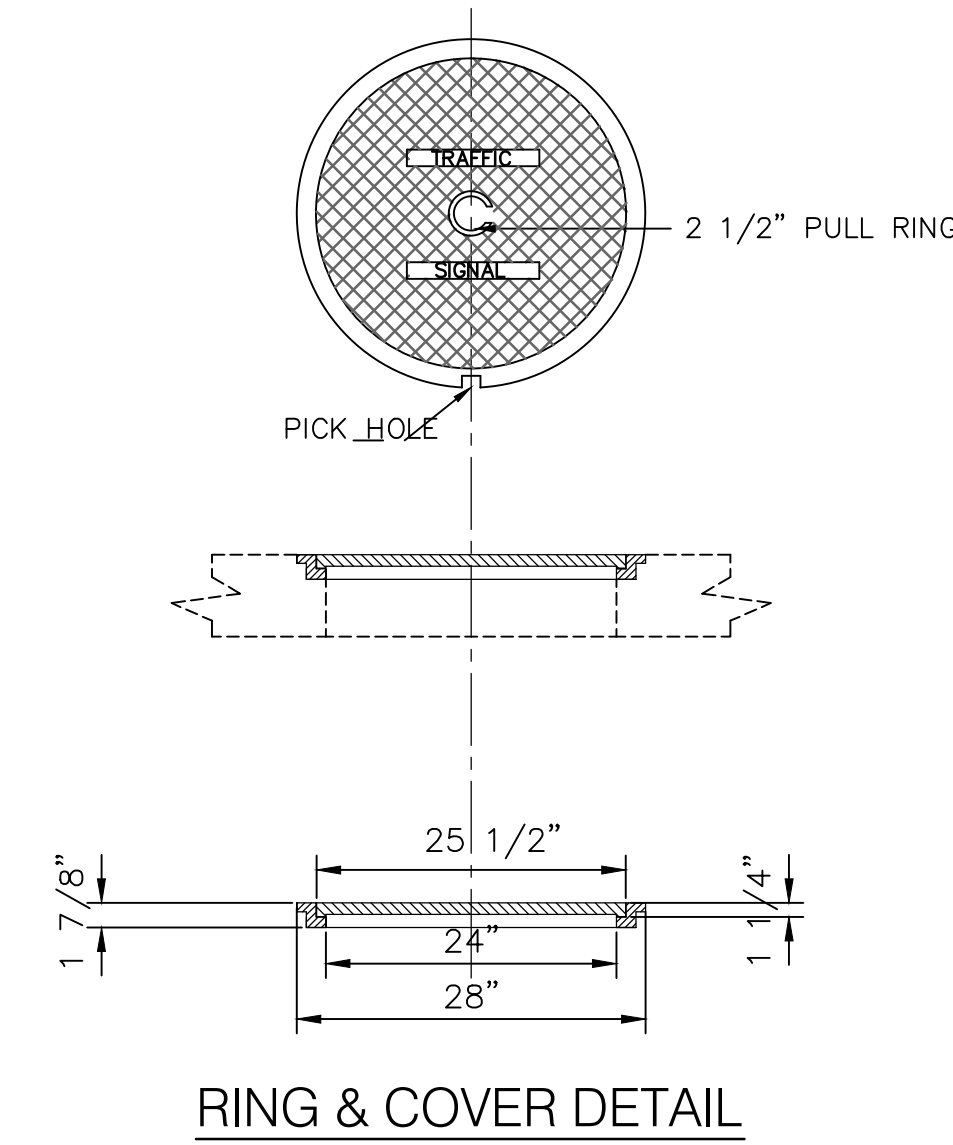
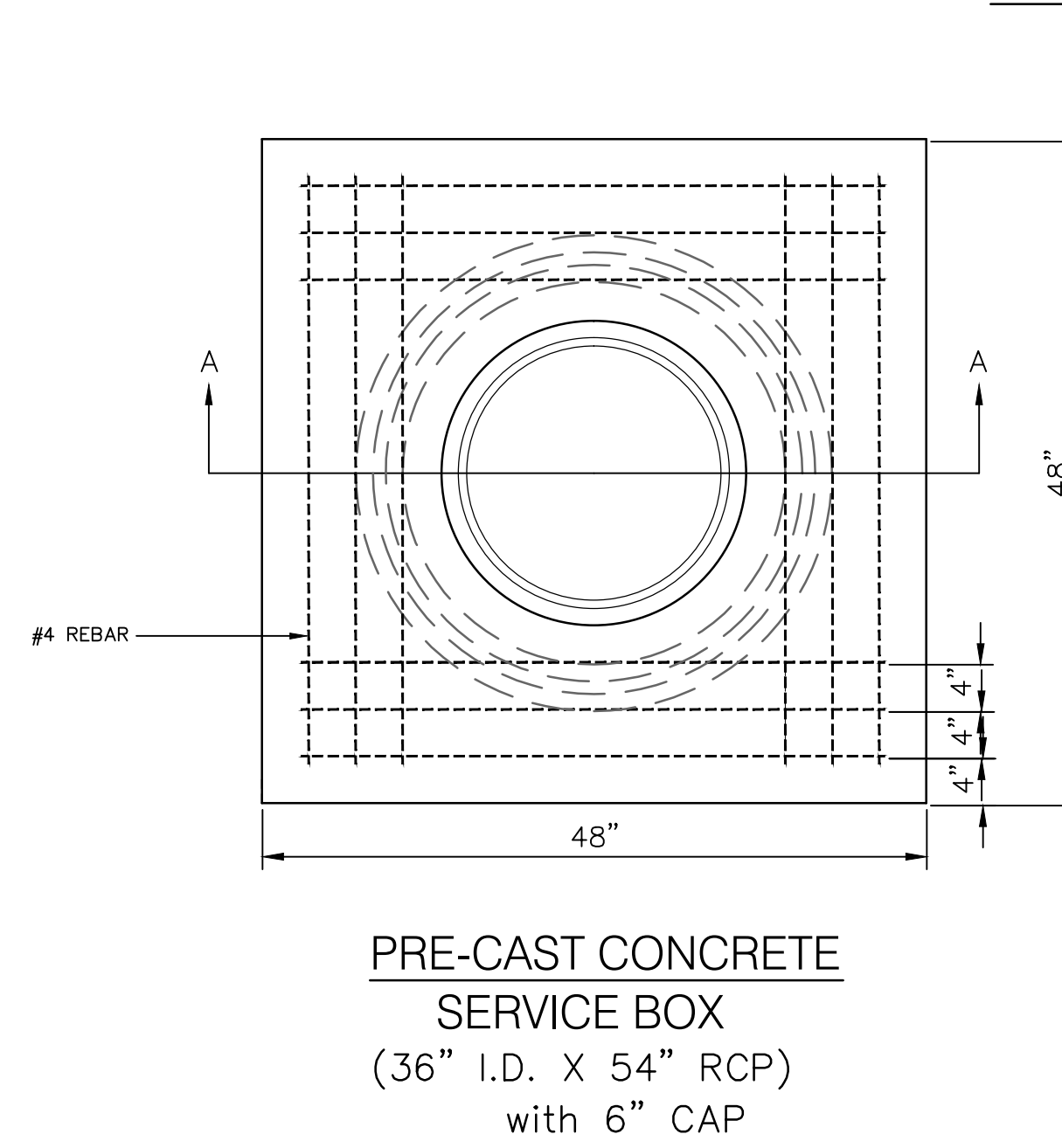


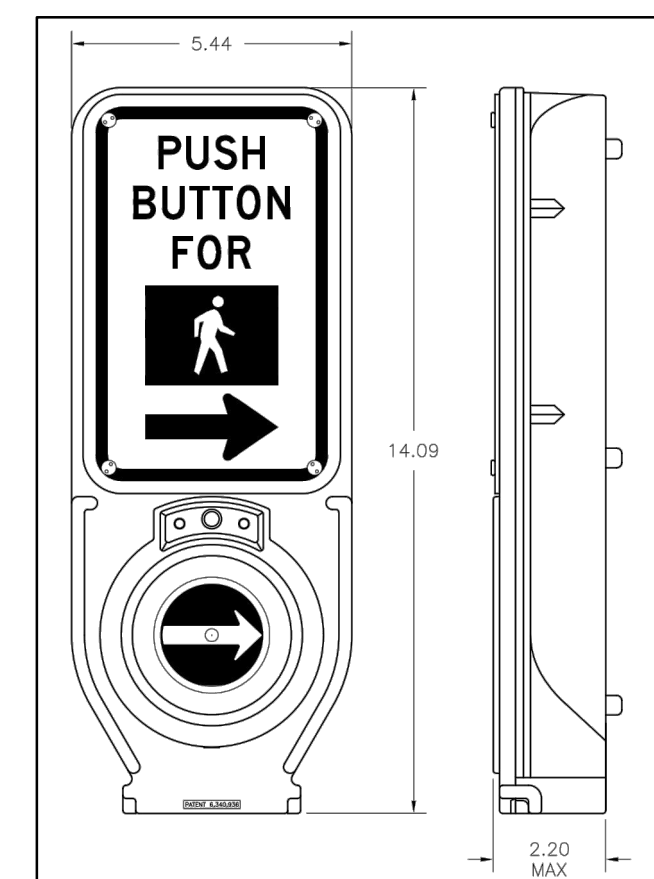
SERVICE BOX CONSTRUCTION/INSTALLATION DETAILS



PEDESTRIAN POLE CONCRETE BASE DETAIL



INSTALL PEDESTRIAN PUSHBUTTON UNDERNEATH CORRESPONDING PEDESTRIAN SIGNAL HEAD ON SIDE OF POLE NEAREST CROSSWALK. UNIT SHALL BE FIRMLY ATTACHED TO THE SIDE OF POLE WITH 3/4" STEEL BANDS. SHARP ENDS SHALL BE FOLDED UNDER TO PREVENT INJURY TO PEDESTRIANS.



PEDESTRIAN PUSHBUTTON/SIGN UNIT DETAIL

NOTES:

SERVICE & JUNCTION BOX:

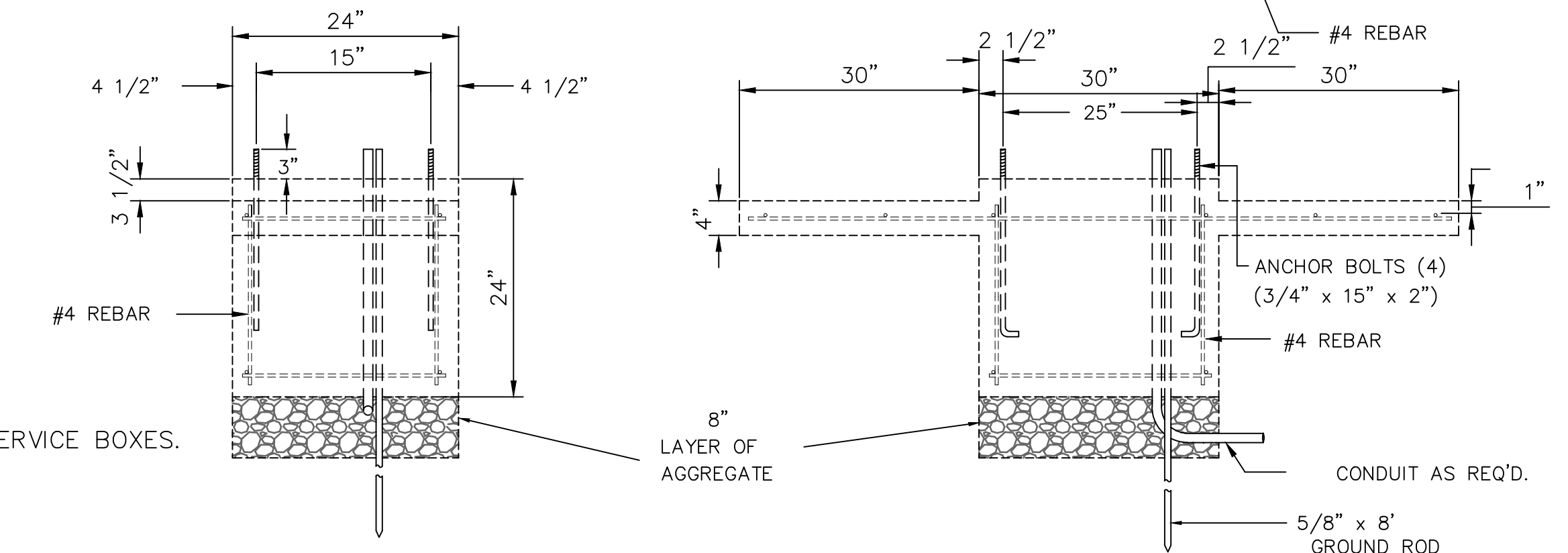
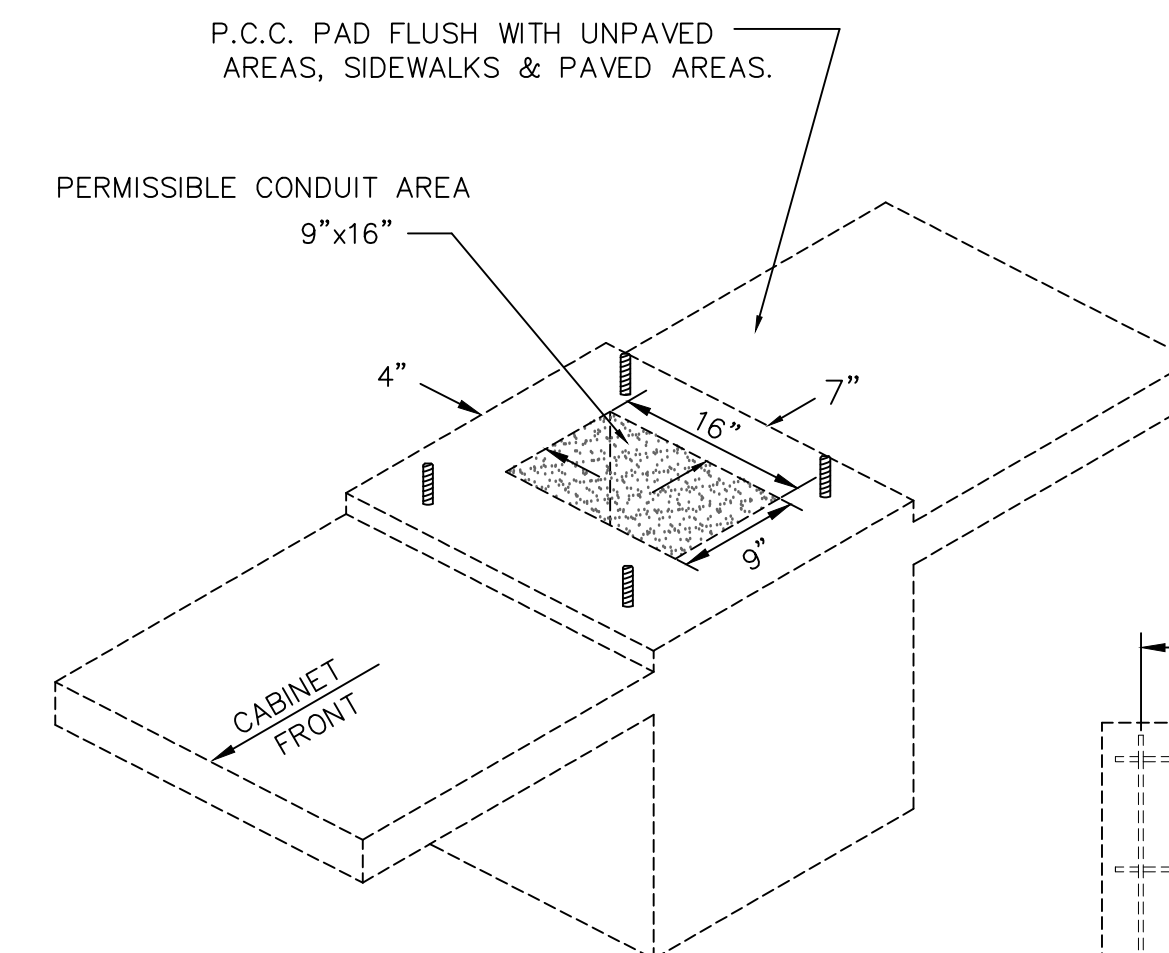
1. CONDUIT CONNECTION TO BE FLUSH TO WITHIN 5" OF INSIDE FACE OF SIDE WALL, CONDUIT TO DRAIN INTO SERVICE BOX.
2. CONDUIT CONNECTIONS TO SERVICE BOX SHALL BE TERMINATED WITH PLASTIC CABLE BUSHING.
3. CONDUIT SHALL BE SEALED WITH APPROVED SEALER AT INSIDE WALL FACE.
4. ALL SERVICE & JUNCTION BOXES TO HAVE 8" OF CRUSHED ROCK.

TRENCHING:

1. DEPTH TO BE 30" MINIMUM WITH ROCK & STUBBLE FREE BACKFILL TO SERVE AS BEDDING MATERIAL. MAINTAIN MINIMUM CONDUIT DEPTH IN TRENCH.
2. BACKFILL TO BE COMPACTED IN 6" LOOSE LIFTS BY HAND OR MECHANICAL TAMPING TO A 95% STANDARD DENSITY.

CONDUIT:

1. SLOPE CONDUIT TO DRAIN AS DIRECTED BY THE ENGINEER.
2. 3" RIGID STEEL CONDUIT BTWN. SERVICE BOXES.  
2" " " " BTWN. SERVICE & SIGNAL POLE  
1 1/2" " " " BTWN. JUNCTION BOXES & SERVICE BOXES.



Drawing File: E:\Projects\21st & Matie\_1004-E492\Details\Signalization Details.dwg

Design: City of Wichita  
Drawn: Staff  
Approved: T. Azicre  
Scale: None

Project No. 1004-E492 CAPITAL IMPROVEMENT PROJECT  
TRAFFIC SIGNALIZATION DETAILS  
21st Street/Matie Road

Baughman Company, P.A.  
315 Ellis St. Wichita, KS 67211 P 316-262-7271 F 316-262-0149  
ENGINEERING | SURVEYING | PLANNING | LANDSCAPE ARCHITECTURE

JANUARY 2012  
SHEET 45 OF 65