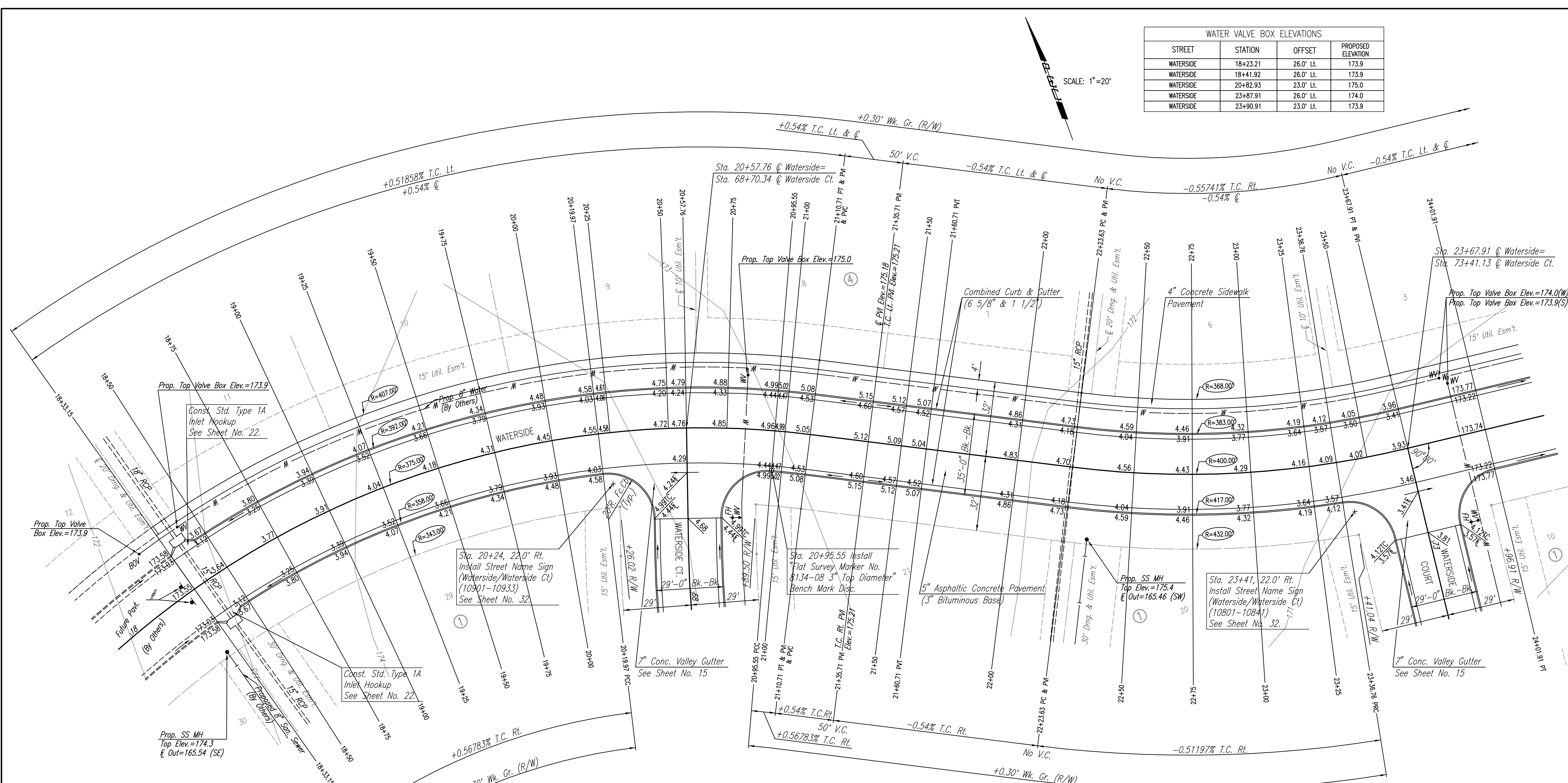


WATER VALVE BOX ELEVATIONS			
STREET	STATION	OFFSET	PROPOSED ELEVATION
WATERSIDE	18+23.21	26.0' Lt.	173.9
WATERSIDE	18+41.92	26.0' Lt.	173.9
WATERSIDE	20+82.93	23.0' Lt.	175.0
WATERSIDE	23+87.91	26.0' Lt.	174.0
WATERSIDE	23+90.91	23.0' Lt.	173.9

SCALE: 1"=20'



① CURVE DATA
 $A=42^{\circ}24'29''$ $D=15' 16" 43.9"$ $R=325.00'$ $L=277.56'$ $T=145.48'$ $E=27.23'$
 CURVE DATA BASED ON ϕ radius $\Delta/2=21^{\circ} 12' 14.5"$

① STATION	① ARC LENGTH	FACE CURB LENGTH		CHORD LENGTH		DEFLECTION ANGLE	① TOTAL DEFLECTION
		LEFT CURB	RIGHT CURB	8' OFF LEFT FACE CURB	8' OFF RIGHT FACE CURB		
18+33.15	16.85'	17.61'	16.09'	17.16'	15.01'	0°00'00.0"	0°00'00.0"
18+50.00	25.00'	26.13'	23.87'	25.45'	22.27'	01°54'35.5"	01°17'14.1"
18+75.00	25.00'	26.13'	23.87'	25.45'	22.27'	01°54'35.5"	03°11'49.6"
19+00.00	25.00'	26.13'	23.87'	25.45'	22.27'	01°54'35.5"	05°06'25.1"
19+25.00	25.00'	26.13'	23.87'	25.45'	22.27'	01°54'35.5"	07°01'6"
19+50.00	25.00'	26.13'	23.87'	25.45'	22.27'	01°54'35.5"	08°55'36.1"
19+75.00	25.00'	26.13'	23.87'	25.45'	22.27'	01°54'35.5"	10°50'11.6"
20+00.00	25.00'	26.13'	23.87'	25.45'	22.27'	01°54'35.5"	12°44'47.1"
20+19.97	19.97'	20.88'	19.06'	20.33'	17.79'	01°31'32.1"	14°16'19.2"
20+25.00	5.03'	5.26'	5.12'	5.12'	5.12'	00°23'03.4"	14°39'22.6"
20+50.00	25.00'	26.13'	23.87'	25.45'	22.27'	01°54'35.5"	16°33'58.1"
20+57.76	7.76'	8.11'	7.90'	7.90'	7.90'	00°35'34.2"	17°09'32.2"
20+75.00	17.24'	18.02'	17.55'	17.55'	17.55'	01°30'11.7"	18°28'33.6"
20+95.55	20.55'	21.48'	20.32'	20.32'	20.32'	01°34'11.7"	20°02'45.2"
21+00.00	4.45'	4.65'	4.25'	4.53'	3.97'	00°20'23.8"	20°23'08.1"
21+10.71	10.71'	11.20'	10.22'	10.91'	9.54'	00°49'05.5"	21°12'14.6"
TOTAL	277.56'	290.14'	192.84'				Defl./ft. = 4.583662 min.

② CURVE DATA
 $A=20^{\circ}39'56''$ $D=14' 19" 26.2"$ $R=400.00'$ $L=144.27'$ $T=72.93'$ $E=6.59'$
 CURVE DATA BASED ON ϕ radius $\Delta/2=10^{\circ} 19' 58"$

② STATION	② ARC LENGTH	FACE CURB LENGTH		CHORD LENGTH		DEFLECTION ANGLE	② TOTAL DEFLECTION
		LEFT CURB	RIGHT CURB	8' OFF LEFT FACE CURB	8' OFF RIGHT FACE CURB		
22+23.63	1.37'	1.31'	1.43'	1.34'	1.52'	0°00'00.0"	0°00'00.0"
22+25.00	25.00'	23.94'	26.06'	24.43'	27.69'	00°05'53.2"	00°05'53.2"
22+50.00	25.00'	23.94'	26.06'	24.43'	27.69'	01°47'25.8"	01°53'19.0"
22+75.00	25.00'	23.94'	26.06'	24.43'	27.69'	01°47'25.8"	03°40'44.8"
23+00.00	25.00'	23.94'	26.06'	24.43'	27.69'	01°47'25.8"	05°28'10.6"
23+25.00	25.00'	23.94'	26.06'	24.43'	27.69'	01°47'25.8"	07°15'36.4"
23+50.00	11.76'	11.26'	12.28'	11.49'	13.03'	00°50'32.1"	08°06'08.4"
23+57.76	13.24'	12.68'	12.28'	12.28'	12.28'	00°56'53.7"	08°03'02.1"
23+67.91	17.91'	17.14'	17.50'	17.50'	17.50'	01°16'55.2"	10°19'58.0"
TOTAL	144.28'	138.14'	117.93'				Defl./ft. = 4.297184 min.

Install Type I Barricade w/E.O.R. Marker. See Sheet No. 32.

No.	Revision	By	Date
	PRAIRIE POINTE-PHASE 1		
	WATERSIDE		
	STA. 18+33.15 TO STA. 24+10.91		
	JAMES L. ARMOUR, P.E.-ACTING CITY ENGINEER		
	CITY OF WICHITA PROJECT NO. 472-84023		
	Professional Engineering Consultants, P.A.		
	303 S. TOPEKA • WICHITA, KANSAS 67202		
	316-262-2691 • FAX 316-262-3003		
Designed by	BDB, BLB	Job No.	35-04171-000
Drawn by	BJS	Date	May 2002
		Sheet	8 of 50

DSNR: BDB OPER: BJS SCALE: 1"=20.00
 C:\2004\04171\000\STR18-24 08-11-2004 02:36:18 pm