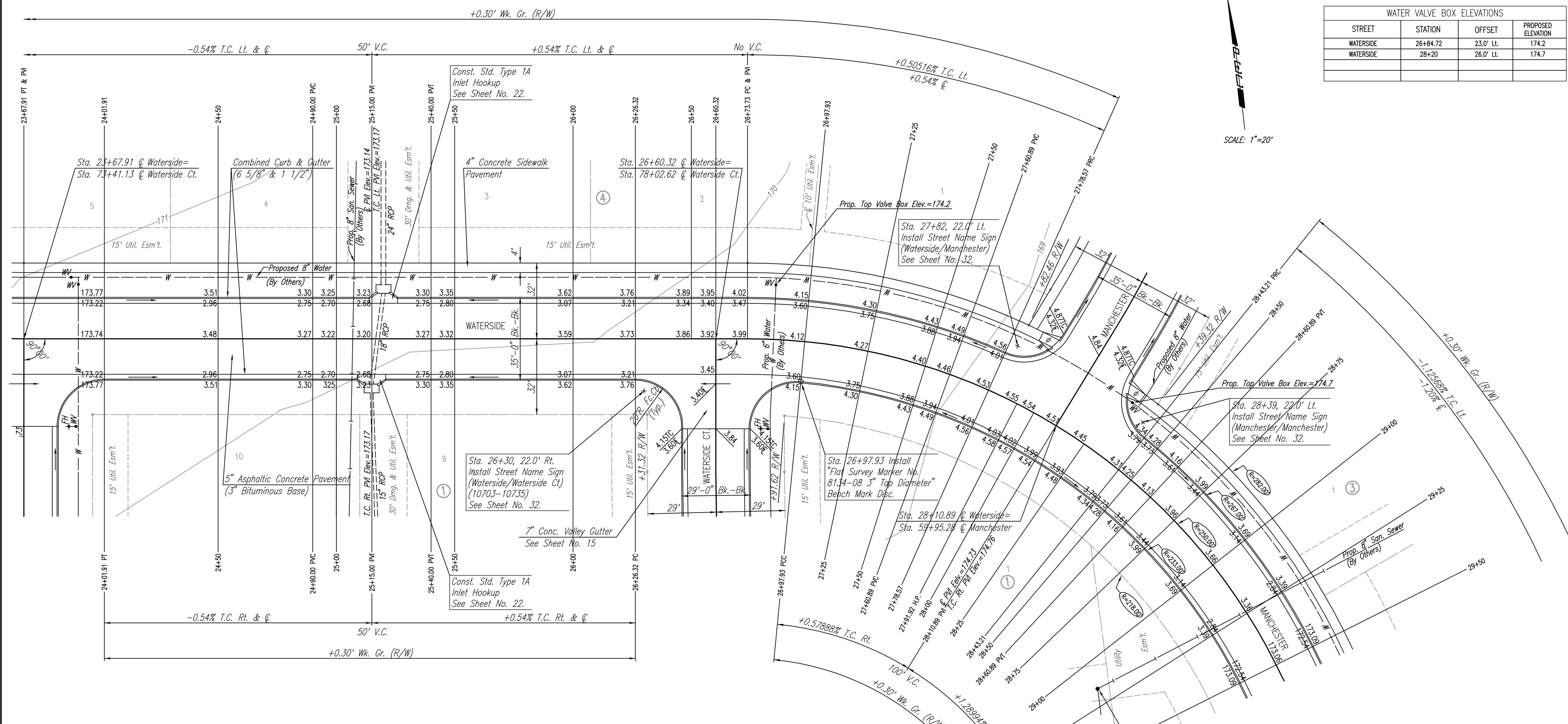


WATER VALVE BOX ELEVATIONS			
STREET	STATION	OFFSET	PROPOSED ELEVATION
WATERSIDE	26+84.72	23.0' Lt.	174.2
WATERSIDE	28+20	26.0' Lt.	174.7

SCALE: 1"=20'



Q CURVE DATA

A=82°31'29"R D=22°55'5.9" R=250.00' L=360.08' T=219.34' E=82.58'

CURVE DATA BASED ON Q radius Δ/2= 41° 15' 44.5"

Q STATION	Q ARC LENGTH	FACE CURB LENGTH		CHORD LENGTH		DEFLECTION ANGLE	Q TOTAL DEFLECTION
		LEFT CURB	RIGHT CURB	8' OFF LEFT FACE CURB	8' OFF RIGHT FACE CURB		
26+73.73						0°00'00.0"	0°00'00.0"
26+75.00	1.27'	1.36'		1.30'		00°08'43.9"	00°08'43.9"
26+97.73	22.73'	24.28'	21.18'	23.30'	19.06'	02°36'16.8"	02°45'7"
27+00.00	2.27'	2.42'	2.12'	2.33'	1.90'	00°15'36.4"	03°00'37.2"
27+25.00	25.00'	26.70'	23.30'	25.62'	20.96'	02°51'53.2"	05°52'30.4"
27+50.00	25.00'	26.70'	23.30'	25.62'	20.96'	02°51'53.2"	08°44'23.7"
27+75.00	25.00'	26.70'	23.30'	25.62'	20.96'	02°51'53.2"	11°36'16.9"
27+85.7	3.57'			3.33'	2.99'	00°24'32.7"	12°00'49.6"
28+00.00	21.43'		19.97'		17.97'	02°27'20.5"	14°28'10.2"
28+10.89	10.89'		10.15'		9.13'	01°14'52.5"	15°43'02.6"
28+25.00	14.11'		13.15'		11.83'	01°37'8"	17°20'03.4"
28+43.21	18.21'		16.97'		15.27'	02°05'12.2"	19°25'15.6"
28+50.00	6.79'	7.25'	6.33'	6.96'	5.70'	00°46'41.1"	20°11'56.7"
28+75.00	25.00'	26.70'	23.30'	25.62'	20.96'	02°51'53.2"	23°03'49.9"
29+00.00	25.00'	26.70'	23.30'	25.62'	20.96'	02°51'53.2"	25°55'43.2"
29+25.00	25.00'	26.70'	23.30'	25.62'	20.96'	02°51'53.2"	28°47'36.4"
29+50.00	25.00'	26.70'	23.30'	25.62'	20.96'	02°51'53.2"	31°39'29.7"
29+75.00	25.00'	26.70'	23.30'	25.62'	20.96'	02°51'53.2"	34°31'22.9"
30+00.00	25.00'	26.70'	23.30'	25.62'	20.96'	02°51'53.2"	37°23'16.2"
30+25.00	25.00'	26.70'	23.30'	25.62'	20.96'	02°51'53.2"	40°15'09.4"
30+33.81	8.81'	9.41'	8.21'	9.03'	7.39'	01°00'34.4"	41°15'44.6"
TOTAL	360.08'	311.72'	334.41'			Defl./ft. = 6.875494 min.	

Construct Std. Wheelchair Ramp

DSNR, BDR OPER, BJS SCALE: 1"=20.00
 Q:\2004\04171\000\STR24-30 08-11-2004 02:37:21 pm

No.	Revision	By	Date
PRAIRIE POINTE-PHASE 1			
WATERSIDE/MANCHESTER			
STA. 24+10.91 TO STA. 29+50 JAMES L. ARMOUR, P.E.-ACTING CITY ENGINEER CITY OF WICHITA PROJECT NO. 472-84023			
Professional Engineering Consultants, P.A. 303 S. TOPKA • WICHITA, KANSAS 67202 316-262-2691 • FAX 316-262-3003			
Designed by	BDB, BLB	Job No.	35-04171-000
Drawn by	BJS	Date	May 2002
			Sheet 9 of 50