

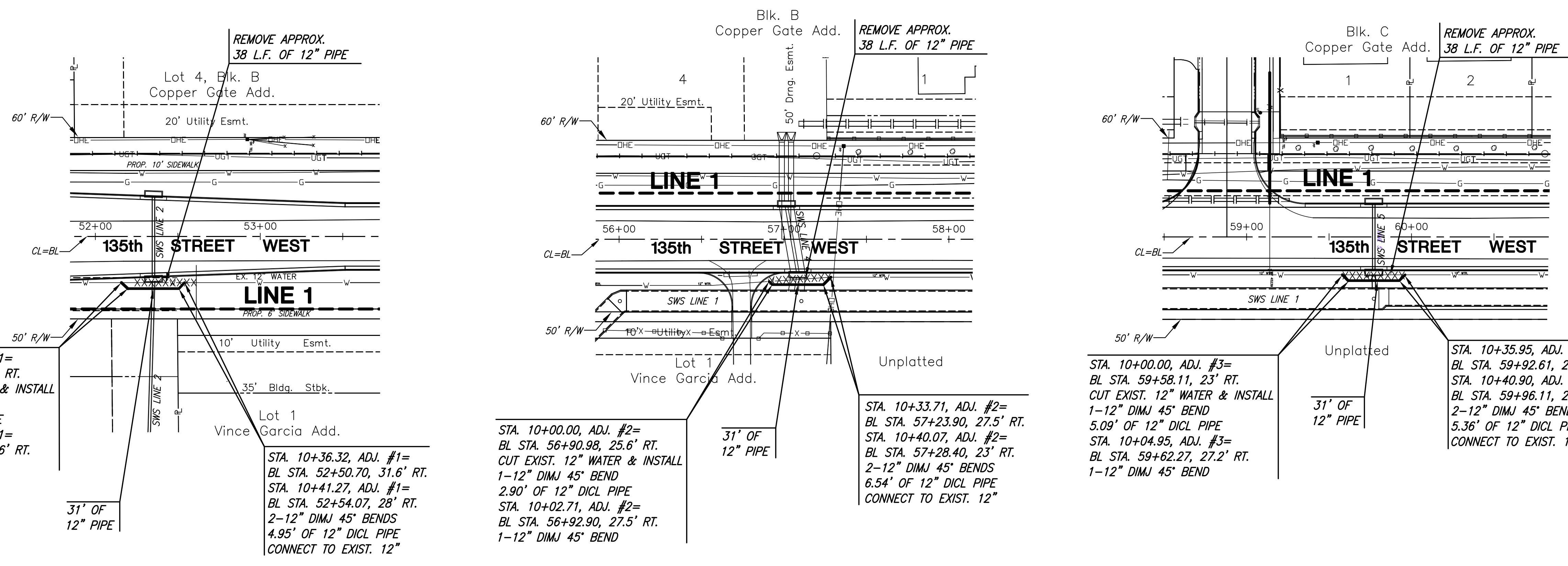
STREET IMPROVEMENTS FOR
135th Street West
from 13th Street to 21st Street North

12" WATERLINE ADJUSTMENTS #1 - #3
SHEET TITLE
MKEC PROJ #10265
PROJECT NUMBER

JRA
DESIGN BY
KKL
DRAWN BY
JRA
CHECKED BY

ISSUED
February 2012
REVISED

SHEET NO.
102 of 231



STA. 10+00.00, ADJ. #1=
BL STA. 52+15.81, 28' RT.
CUT EXIST. 12" WATER & INSTALL
1-12" DIMJ 45° BEND
5.32' OF 12" DICL PIPE
STA. 10+05.32, ADJ. #1=
BL STA. 52+19.70, 31.6' RT.
1-12" DIMJ 45° BEND

STA. 10+36.32, ADJ. #1=
BL STA. 52+50.70, 31.6' RT.
STA. 10+41.27, ADJ. #1=
BL STA. 52+54.07, 28' RT.
2-12" DIMJ 45° BENDS
4.95' OF 12" DICL PIPE
CONNECT TO EXIST. 12"

STA. 10+00.00, ADJ. #2=
BL STA. 56+90.98, 25.6' RT.
CUT EXIST. 12" WATER & INSTALL
1-12" DIMJ 45° BEND
2.90' OF 12" DICL PIPE
STA. 10+02.71, ADJ. #2=
BL STA. 56+92.90, 27.5' RT.
1-12" DIMJ 45° BEND

STA. 10+33.71, ADJ. #2=
BL STA. 57+23.90, 27.5' RT.
STA. 10+40.07, ADJ. #2=
BL STA. 57+28.40, 23' RT.
2-12" DIMJ 45° BENDS
6.54' OF 12" DICL PIPE
CONNECT TO EXIST. 12"

STA. 10+00.00, ADJ. #3=
BL STA. 59+58.11, 23' RT.
CUT EXIST. 12" WATER & INSTALL
1-12" DIMJ 45° BEND
5.09' OF 12" DICL PIPE
STA. 10+04.95, ADJ. #3=
BL STA. 59+62.27, 27.2' RT.
1-12" DIMJ 45° BEND

STA. 10+35.95, ADJ. #3=
BL STA. 59+92.61, 26.5' RT.
STA. 10+40.90, ADJ. #3=
BL STA. 59+96.11, 23' RT.
2-12" DIMJ 45° BENDS
5.36' OF 12" DICL PIPE
CONNECT TO EXIST. 12"

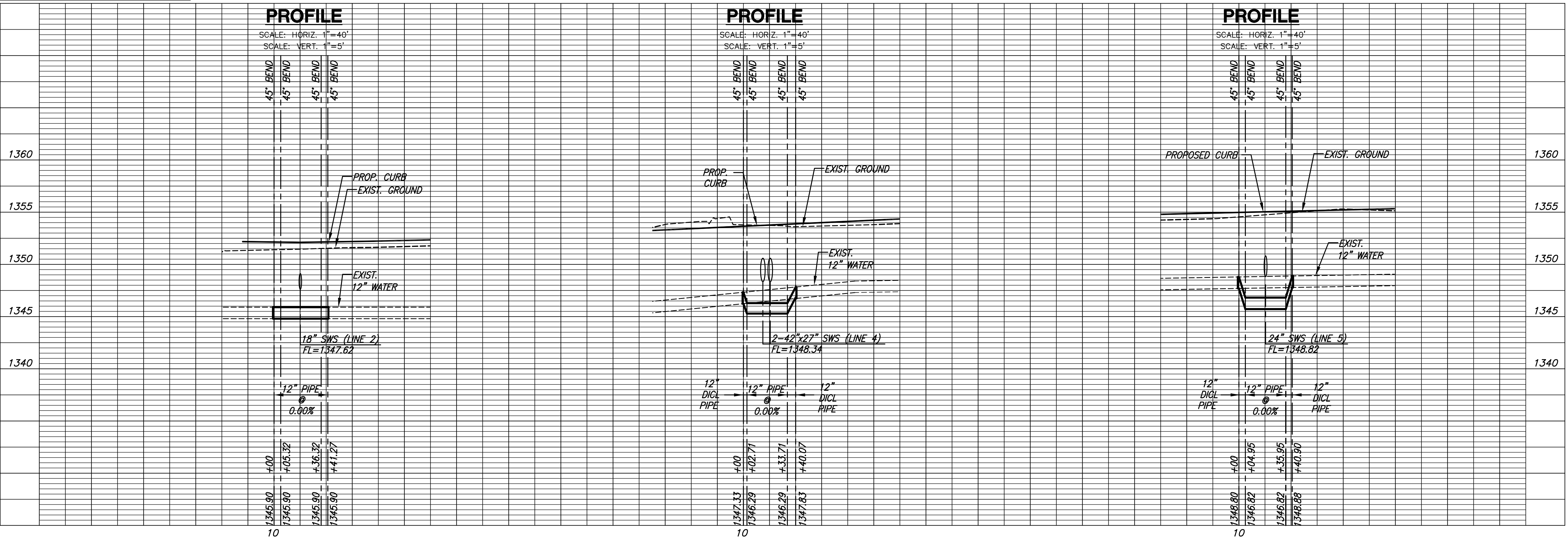
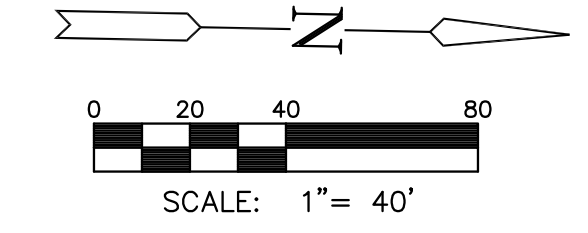
LEGEND
XXXXXXX REMOVE EXIST.
12" WATER LINE.

NOTE:
CONTRACTOR TO VERIFY LOCATION OF
EXISTING WATER LINES AND ALL OTHER
UTILITIES PRIOR TO CONSTRUCTION.

PLAN ADJUSTMENT #1

PLAN ADJUSTMENT #2

PLAN ADJUSTMENT #3



PLOTED: Tuesday, February 21, 2012 @ 04:42PM

J:\Civil\10265\DWG\WTR\10265_007