



STREET IMPROVEMENTS FOR
135th Street West
from 13th Street to 21st Street North

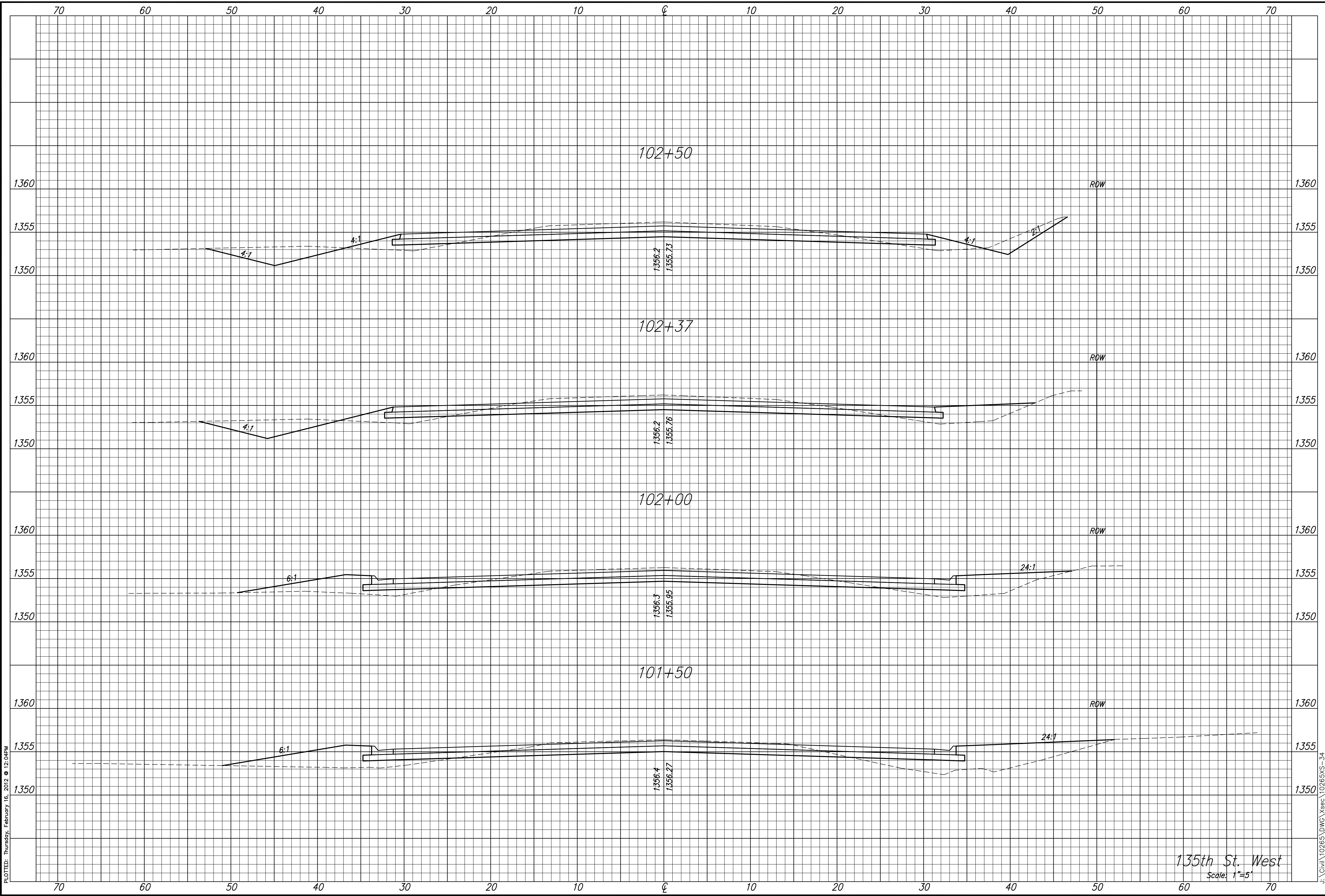
**CROSS SECTIONS
STA. 101+50.00
TO
STA. 102+50.00**

SHEET TITLE
MKEC PROJ #10265
PROJECT NUMBER

DESIGN BY JRA
DRAWN BY DPG
CHECKED BY JRA

ISSUED February 2012
REVISED

SHEET NO.
202 of 231



PLotted: Thursday, February 16, 2012 @ 12:04PM

J:\Civil\10265\DWG\Xsec\10265XS-34

135th St. West
Scale: 1"=5'