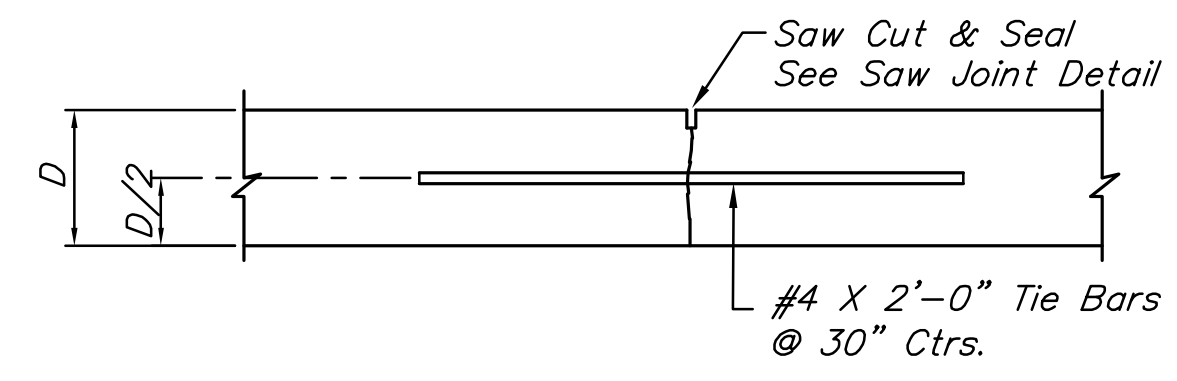
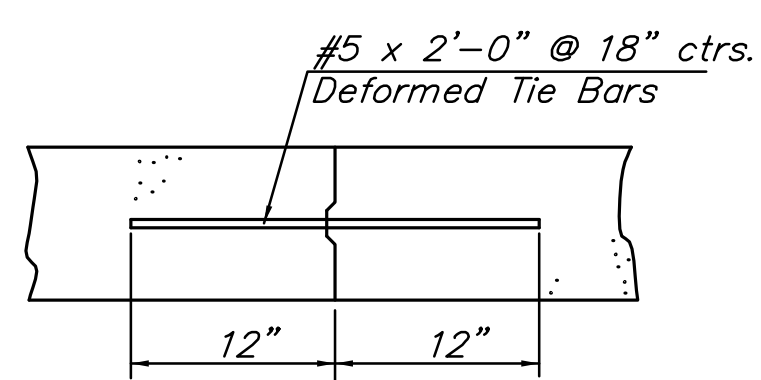


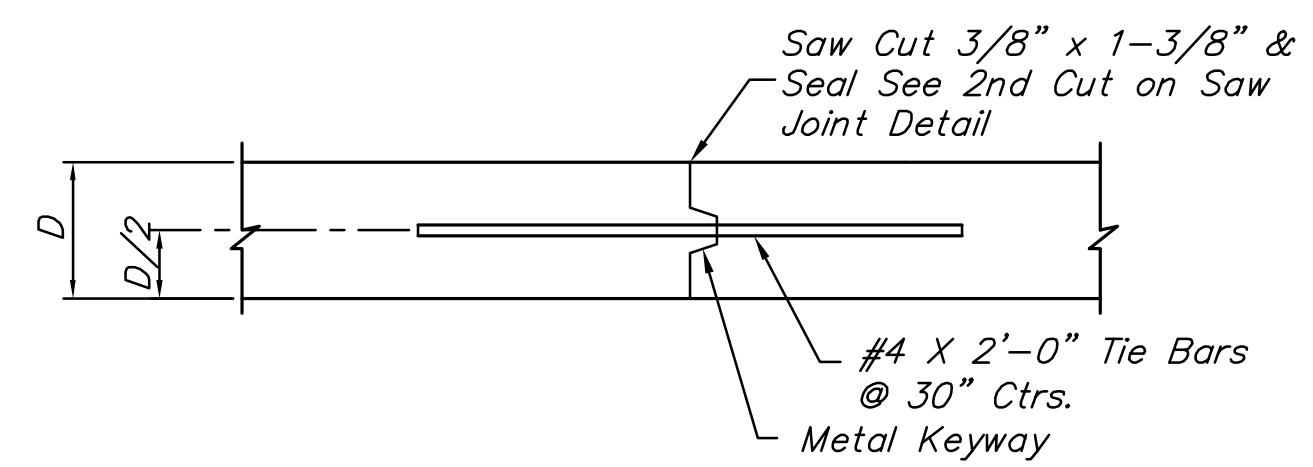
**ISOLATION JOINT (I.J.)**  
(At Structures)



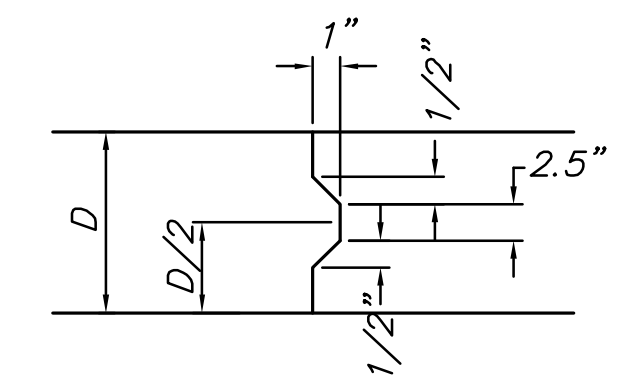
**LONGITUDINAL JOINT DETAIL (L.J.)**



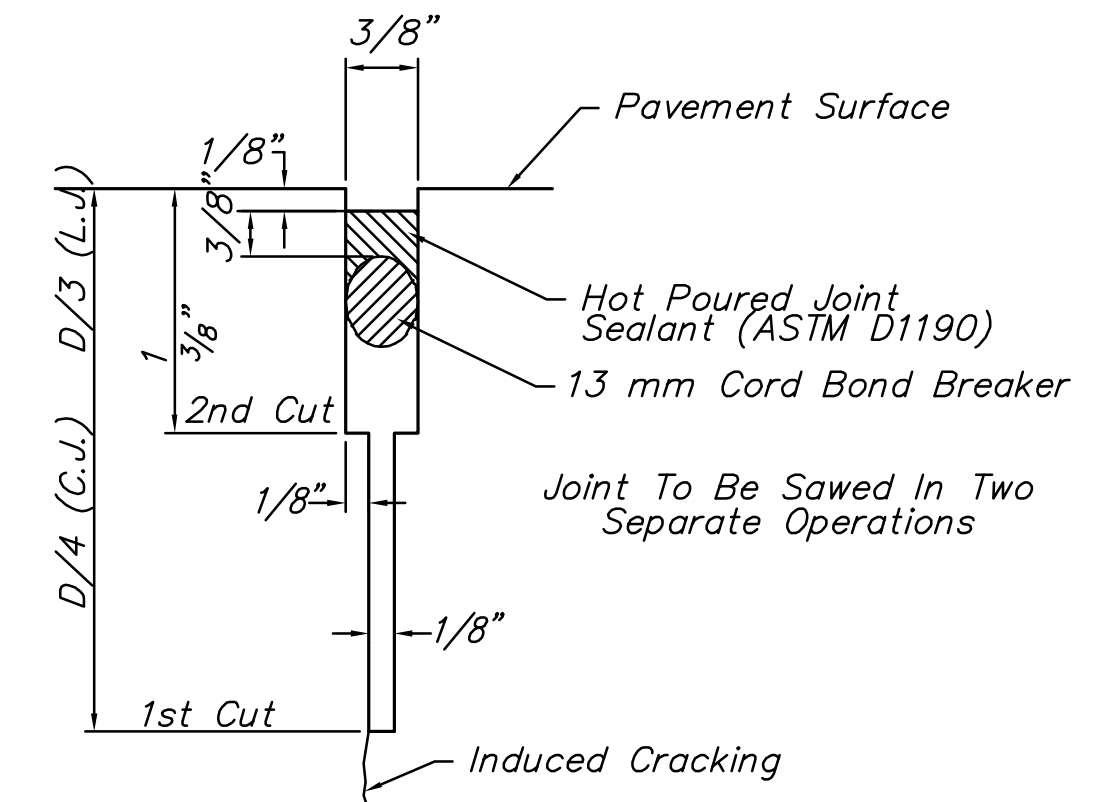
**TIED CONSTRUCTION (T.J.) AND CONTRACTION (C.J.) JOINT DETAIL**



**OPTIONAL LONGITUDINAL JOINT DETAIL (L.J.)**

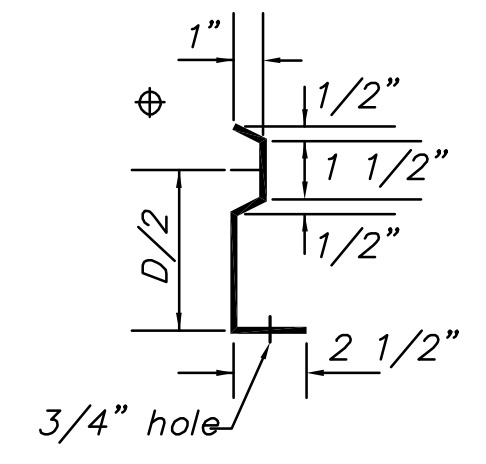


**KEYWAY DETAIL**



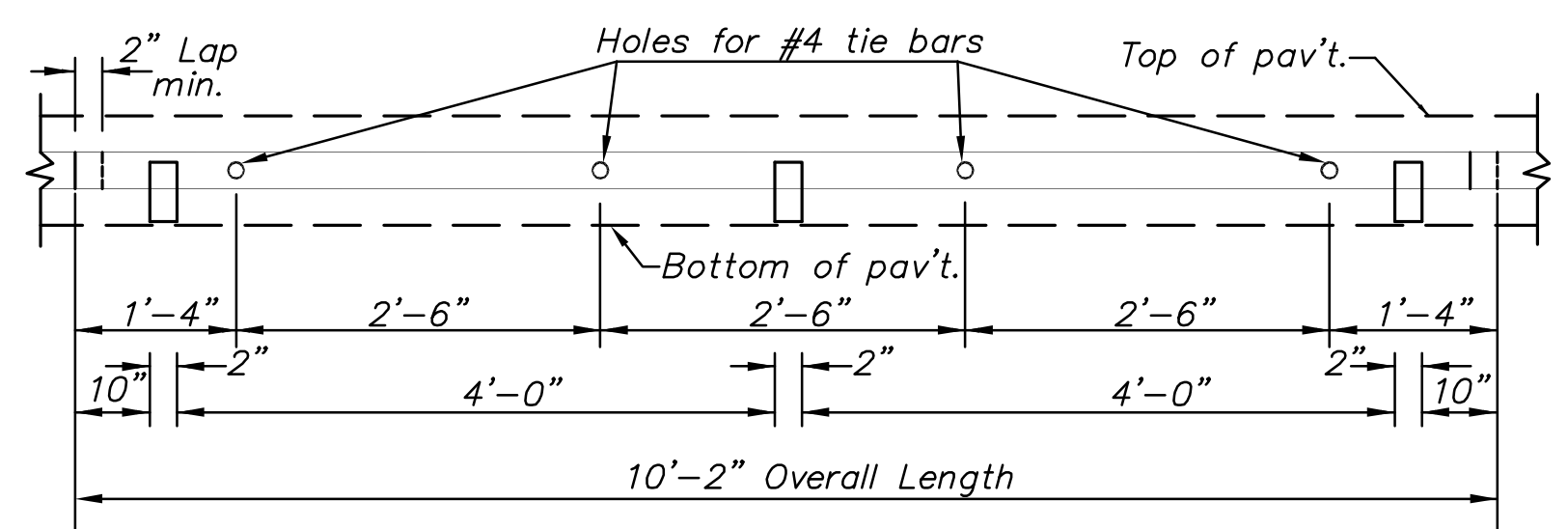
**SAW JOINT DETAIL**

Note: Contraction joints will be constructed at the planned location or as directed by the Engineer. When necessary to interrupt continuous placement for a substantial length of time or at the end of a day's pour, the Contractor has the option of ending placement at a contraction joint or with a construction joint located a minimum of five (5) feet from a contraction joint. Either joint type may be constructed by placing a header at the end of the pour or by paving past the joint location, sawing the joint after the concrete has hardened, and drilling holes for the tie bars and securing into the concrete with epoxy or cement grout.



**SECTION OF RECESSED FORM LEG**

⊕Snap-in leg or other approved designs may be used in lieu of welded leg.



**METAL STRIP FOR LONGITUDINAL CONSTRUCTION JOINT**

To be used only against forms. Shall not extend through contraction or expansion joints. Other types of construction shall be permitted with the approval of the engineer.

**STREET IMPROVEMENTS FOR  
135th Street West**  
from 13th Street to 21st Street North

**CONCRETE PAVEMENT DETAILS**

SHEET TITLE  
MKEC PROJ #10265  
PROJECT NUMBER

DESIGN BY  
DRAWN BY  
CHECKED BY

ISSUED  
February 2012  
REVISED

SHEET NO.  
**58 of 231**