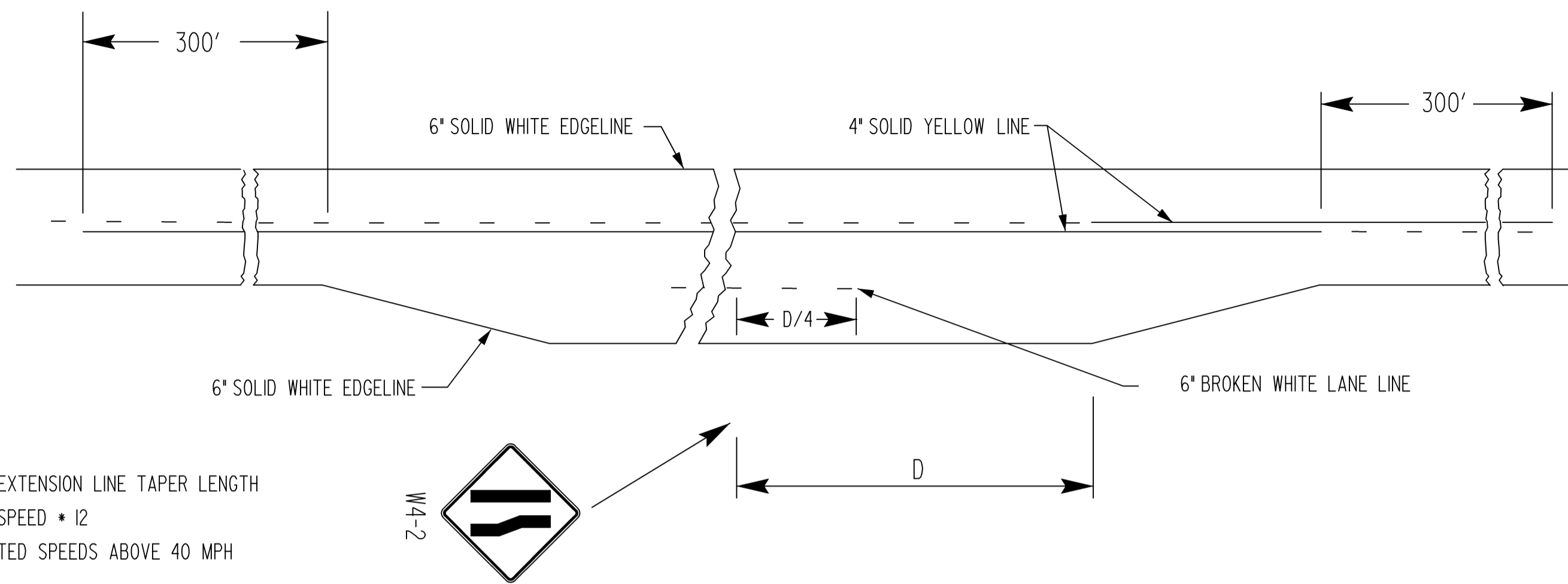


STATE	PROJECT NO.	YEAR	SHEET NO.	TOTAL SHEETS
KANSAS	472-84911		16	36

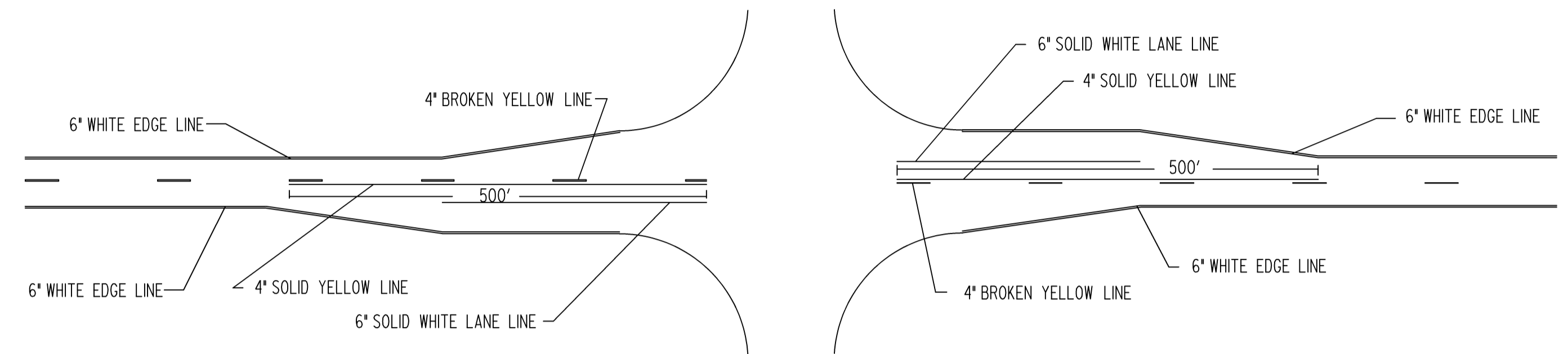


NOTE:
 DOTTED EXTENSION LINE TAPER LENGTH
 POSTED SPEED • 12
 FOR POSTED SPEEDS ABOVE 40 MPH

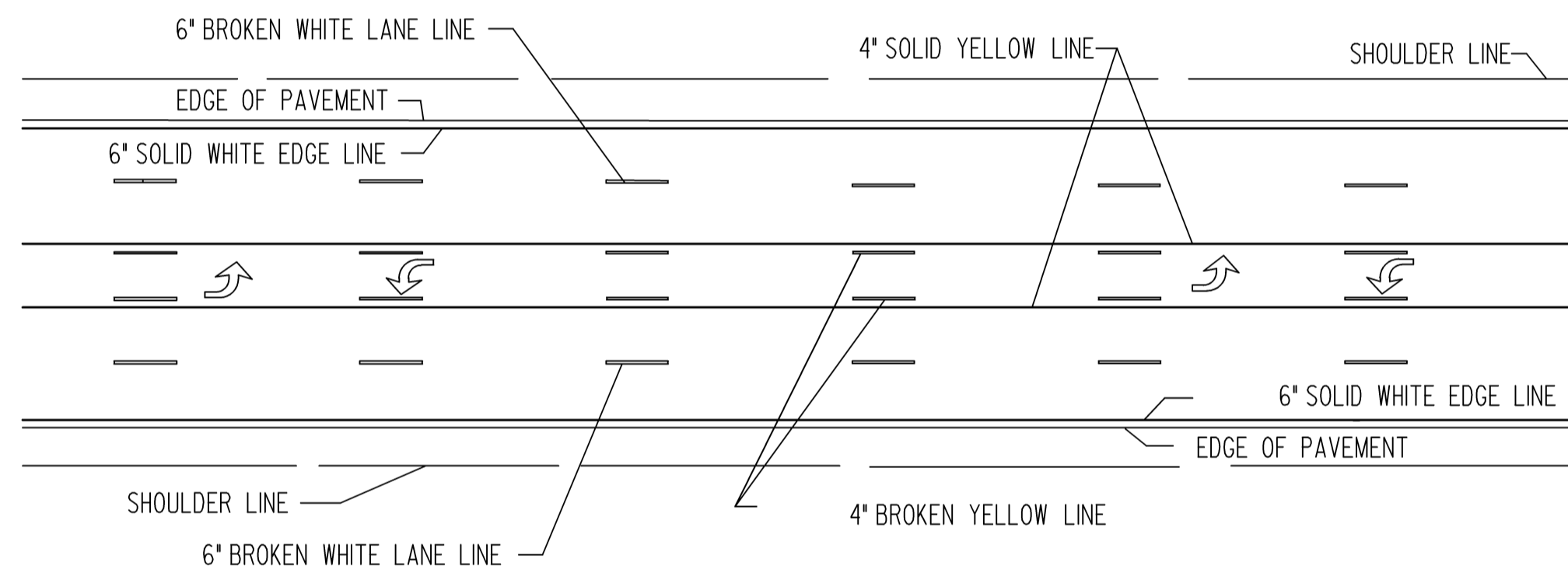
TYPICAL MARKING FOR AUXILIARY PASSING LANE

NOTE: ALL PAVEMENT MARKINGS SHALL BE BROKEN AT CROSS ROADS.

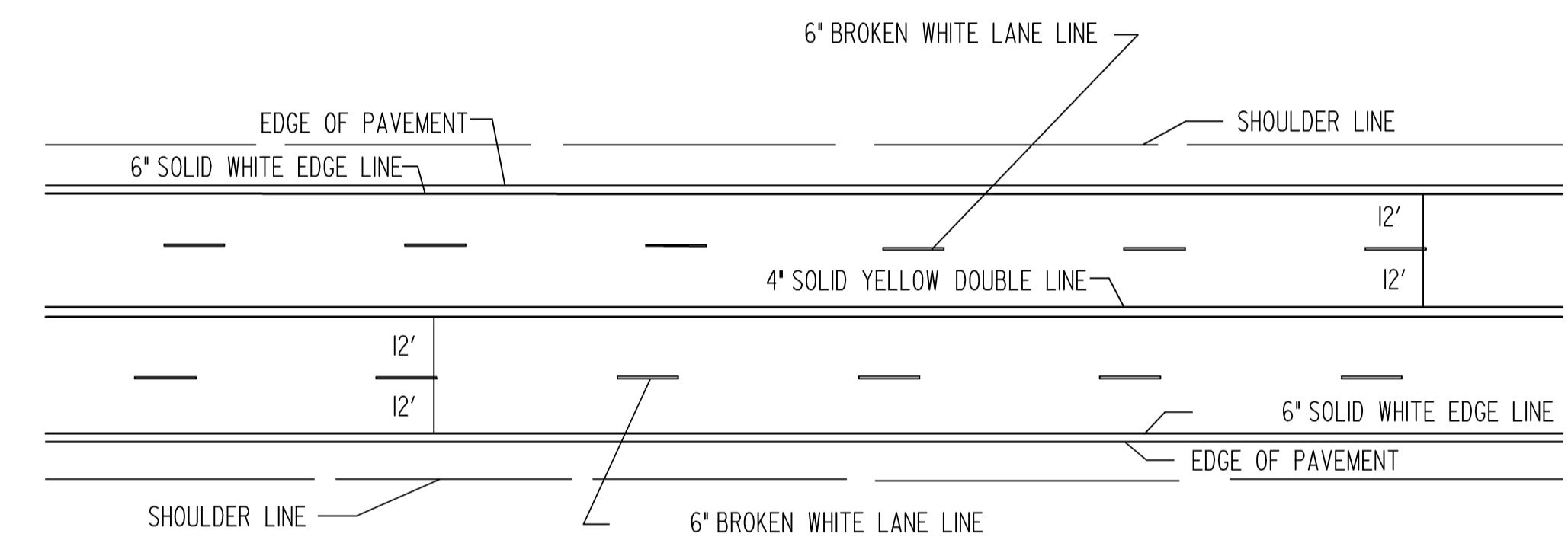
FOR HIGHWAY JUNCTIONS THE NO PASSING ZONE WILL EXTEND 1000' FROM INTERSECTION



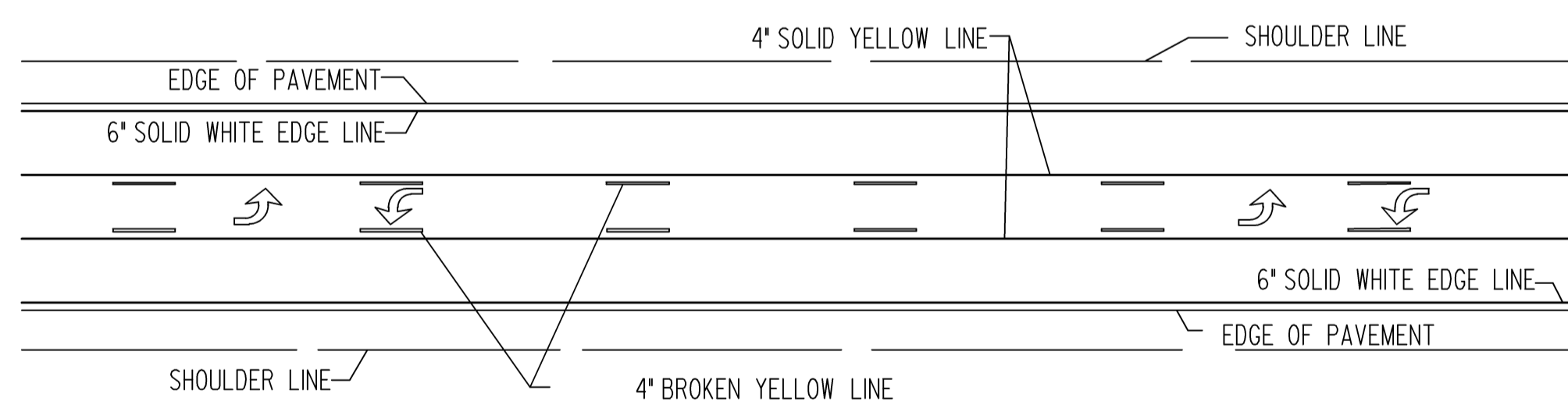
TYPICAL ROAD JUNCTION MARKINGS WITH BYPASS LANES



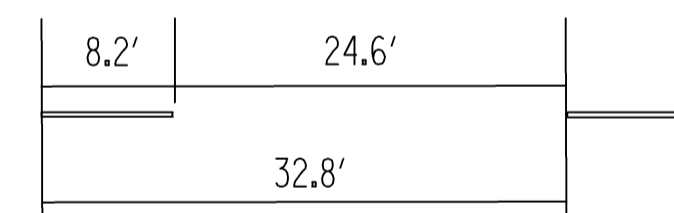
TWO-WAY LEFT TURN DETAIL FOR FIVE LANE ROADWAY



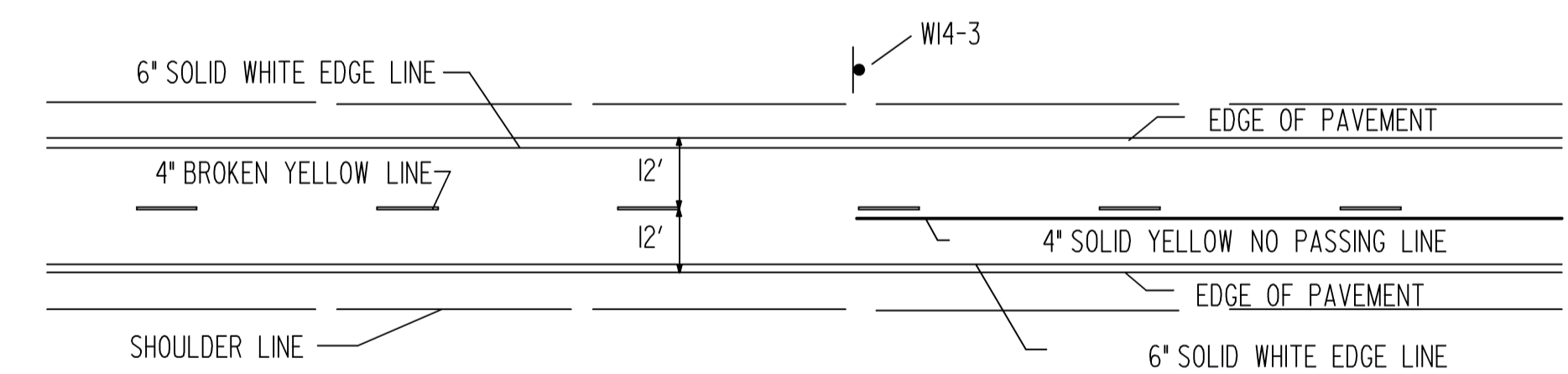
TYPICAL MARKINGS FOR FOUR LANE ROADWAY



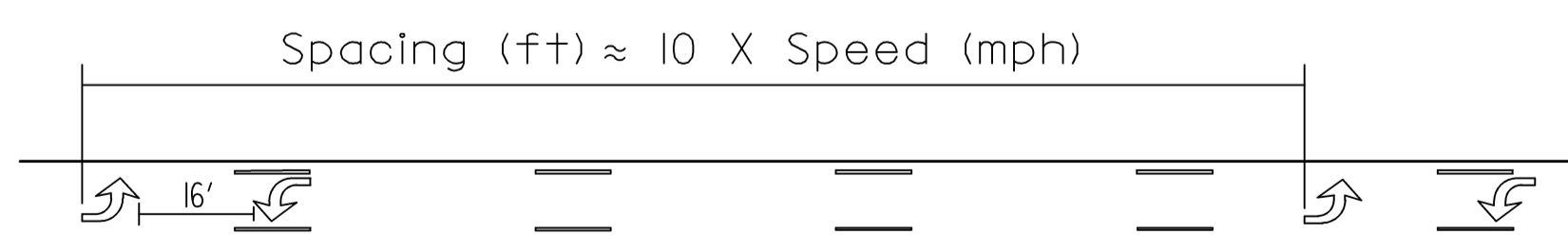
TWO-WAY LEFT TURN DETAIL FOR THREE LANE ROADWAY



TYPICAL SPACING FOR BROKEN LINES UNLESS OTHERWISE NOTED ON PLANS

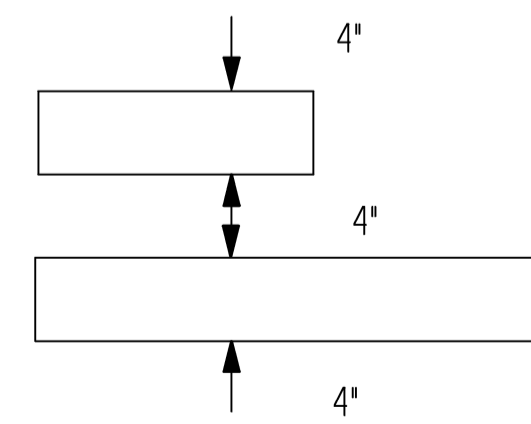


TYPICAL TWO LANE MARKINGS



TWO-WAY LEFT TURN ARROW SPACING DETAIL

NOTE: If arrows are used space the arrows as shown in the spacing detail



TYPICAL SPACING FOR NO PASSING LINES UNLESS OTHERWISE NOTED ON PLANS

NOTE:
 LONGITUDINAL PAVEMENT MARKING LINES SHALL BE OFFSET A MINIMUM OF 2" FROM LONGITUDINAL PAVEMENT JOINTS.

NOTE:
 ON NON I, US, AND K ROUTES, 4" EDGE LINES MAY BE INSTALLED. 6" EDGE LINES ARE NOT REQUIRED ON NON I, US, AND K ROUTES.

Plotted By : \$USERNAME\$
 Plot File : \$\$\$\$DGN\$SPEC\$\$\$\$\$
 Plot Date : \$\$\$\$TIME\$\$\$\$\$

3					
2	09/20/2005	Removed auxiliary passing lane dotted extension line	JFF	BDG	
1	07/26/2005	New FHWA Approval Date	JFF	BDG	
NO.	DATE		BY	APP'D	

KANSAS DEPARTMENT OF TRANSPORTATION
 TYPICAL PAVEMENT MARKING DETAILS FOR UNDIVIDED ROADWAYS
 TE308
 FHWA APPROVAL 07/26/2005 APP'D Brian D. Gower
 DESIGNED JFF DETAILED JFF QUANTITIES TRACED
 DESIGN CK. BDG DETAIL CK. BDG QUAN. CK. TRACE CK.