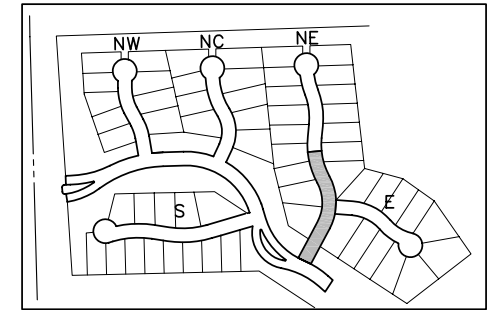
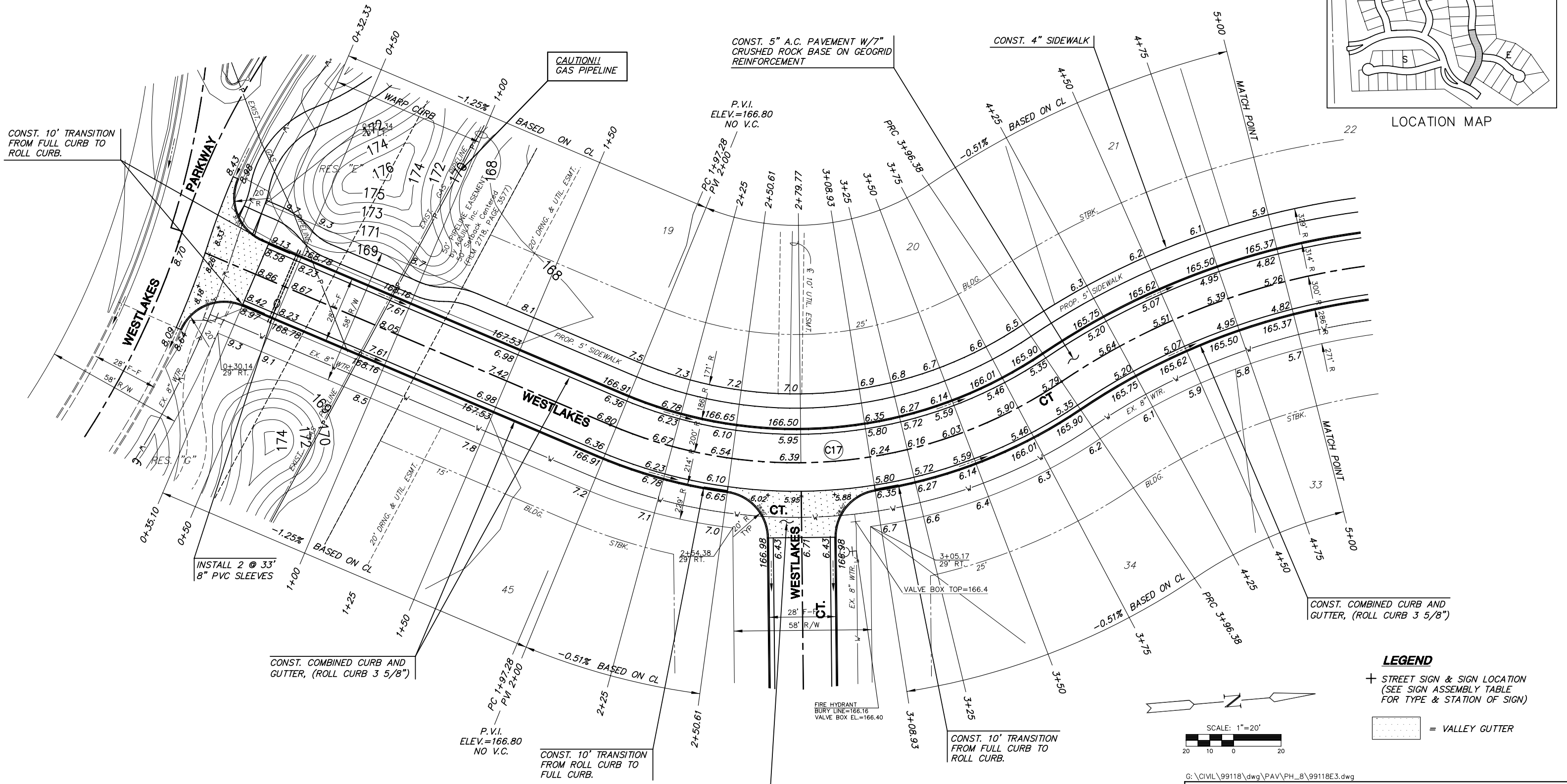


FOX RIDGE ADDITION



LOCATION MAP



CONST. 10' TRANSITION FROM FULL CURB TO ROLL CURB.

CAUTION!! GAS PIPELINE

CONST. 5" A.C. PAVEMENT W/7" CRUSHED ROCK BASE ON GEOGRID REINFORCEMENT

CONST. 4" SIDEWALK

INSTALL 2 @ 33' 8" PVC SLEEVES

CONST. COMBINED CURB AND GUTTER, (ROLL CURB 3 5/8")

CONST. 10' TRANSITION FROM ROLL CURB TO FULL CURB.

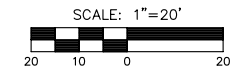
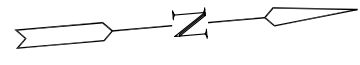
CONST. 7" REINF. CONC. VALLEY GUTTER W/7" CRUSHED ROCK BASE ON GEOGRID REINFORCEMENT

CONST. COMBINED CURB AND GUTTER, (ROLL CURB 3 5/8")

LEGEND

+ STREET SIGN & SIGN LOCATION (SEE SIGN ASSEMBLY TABLE FOR TYPE & STATION OF SIGN)

[Symbol] = VALLEY GUTTER



G:\CIVIL\99118\dwg\PAV\PH\_8\99118E3.dwg

- NOTE:**
1. TOP OF CURB ELEVATIONS SHOWN ARE FOR FULL CURB. CONSTRUCT CURB AS NOTED.
  2. CONTRACTOR SHALL REMOVE ALL TREES WITHIN ROAD RIGHT-OF-WAY.
  3. CURVE DATA FOR CURVES LABELED (C#) MAY BE FOUND ON SHEET 4.

FOX RIDGE ADDITION

<p><b>MKEC</b> ENGINEERING CONSULTANTS 411 N. WEBB ROAD WICHITA, KS. 67206 316-684-9600</p>	<b>FOX RIDGE ADDITION</b>	
	PROJECT NAME	
	<b>WESTLAKES COURT (NE) - PHASE 8</b>	
	SHEET TITLE	
SS DESIGN BY.	DM DRAWN BY.	GA CHECKED BY.
SEPTEMBER 2004	99118E3	16 / 50
DATE	JOB NO.	SHEET/OF