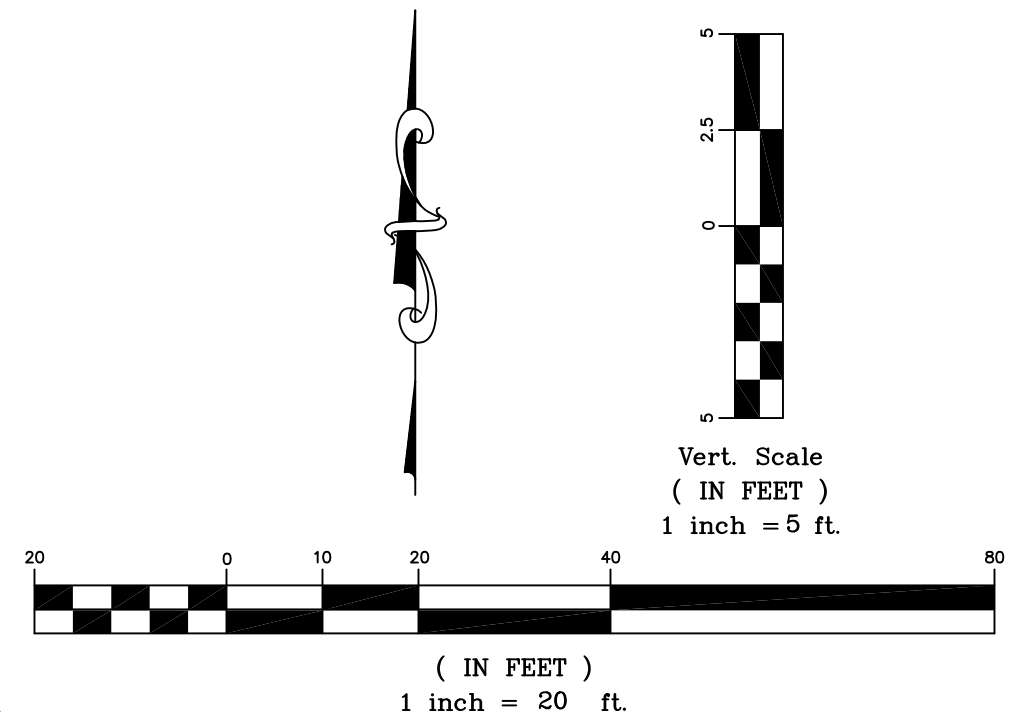
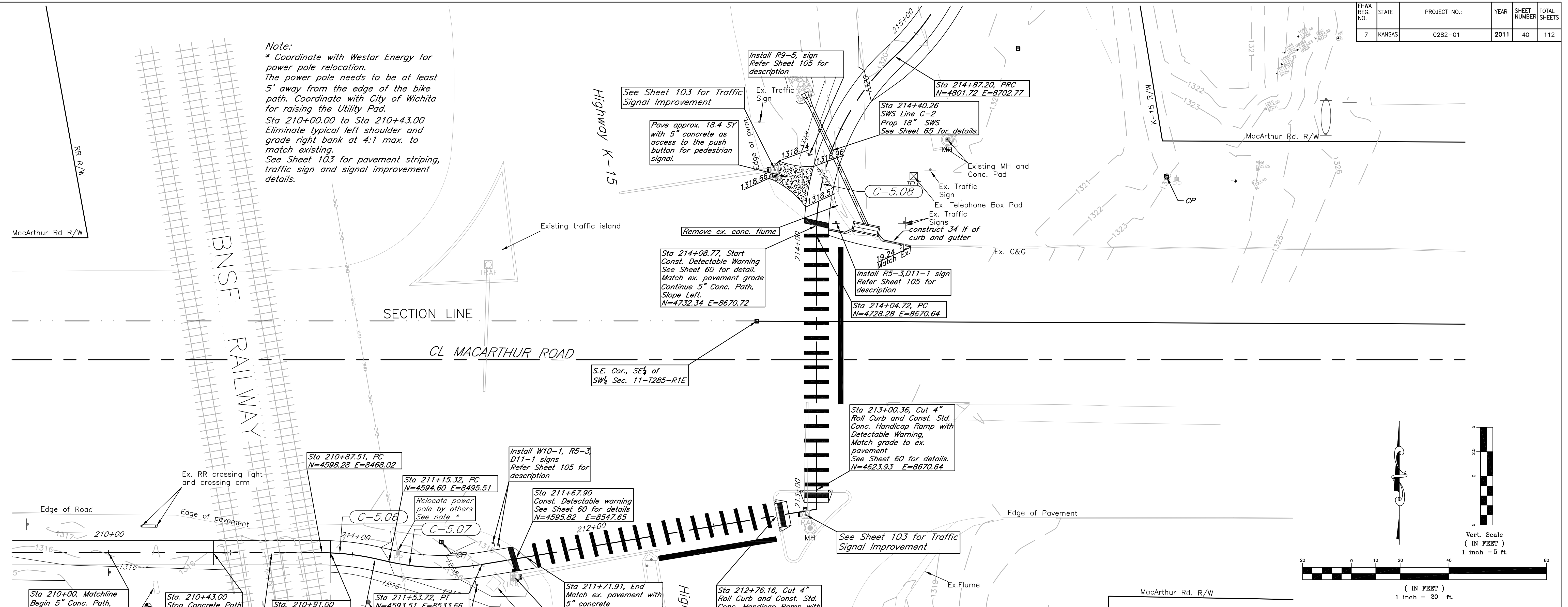
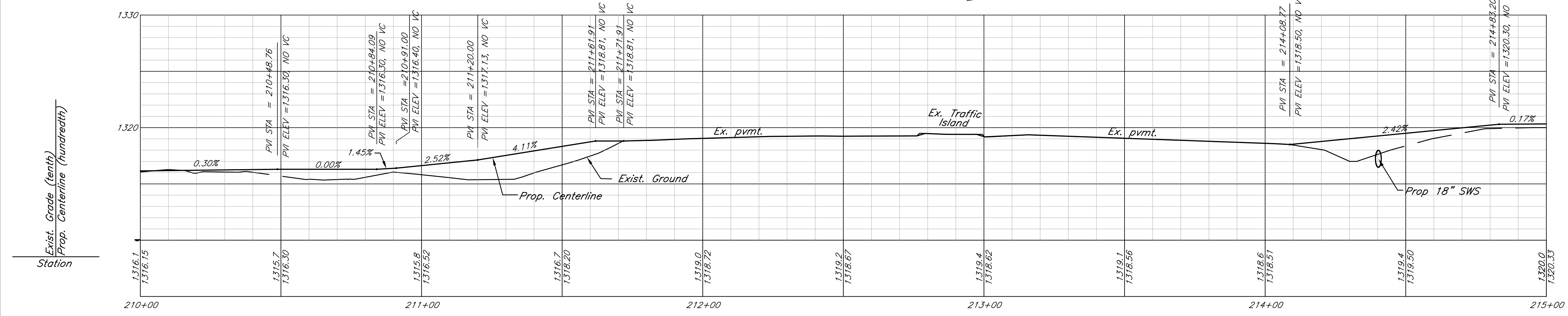


**Note:**  
 \* Coordinate with Westar Energy for power pole relocation. The power pole needs to be at least 5' away from the edge of the bike path. Coordinate with City of Wichita for raising the Utility Pad.  
 Sta 210+00.00 to Sta 210+43.00 Eliminate typical left shoulder and grade right bank at 4:1 max. to match existing. See Sheet 103 for pavement striping, traffic sign and signal improvement details.



CURVE INFORMATION TABLE						
CURVE NAME	BEGINNING STATION	BASIC INFORMATION			CHORD INFORMATION	
		RADIUS	DELTA	LENGTH	DEFLECT	LENGTH
C-5.06	210+87.51	100.00'	12°38'05"	22.05'	06°19'03" Rt	22.01'
C-5.07	211+15.32	100.00'	22°00'17"	38.41'	11°00'08" Lt	38.17'
C-5.08	214+04.72	100.00'	47°15'28"	82.48'	23°37'44" Rt	80.16'



**kemiller engineering**  
 516 S. Market, Wichita, KS 67202  
 316/264-0242

City of Wichita Bike Path Expansion  
**Sta 210+00 to 215+00**  
 Wichita, Kansas  
 PROJECT NUMBER: 472-84932  
 OCA# 707030

KEM NO. 05168	FILE pp1
DESIGN KM	DRAWN CD
DATE 08/2011	REVISED

SHEET 40 OF 112