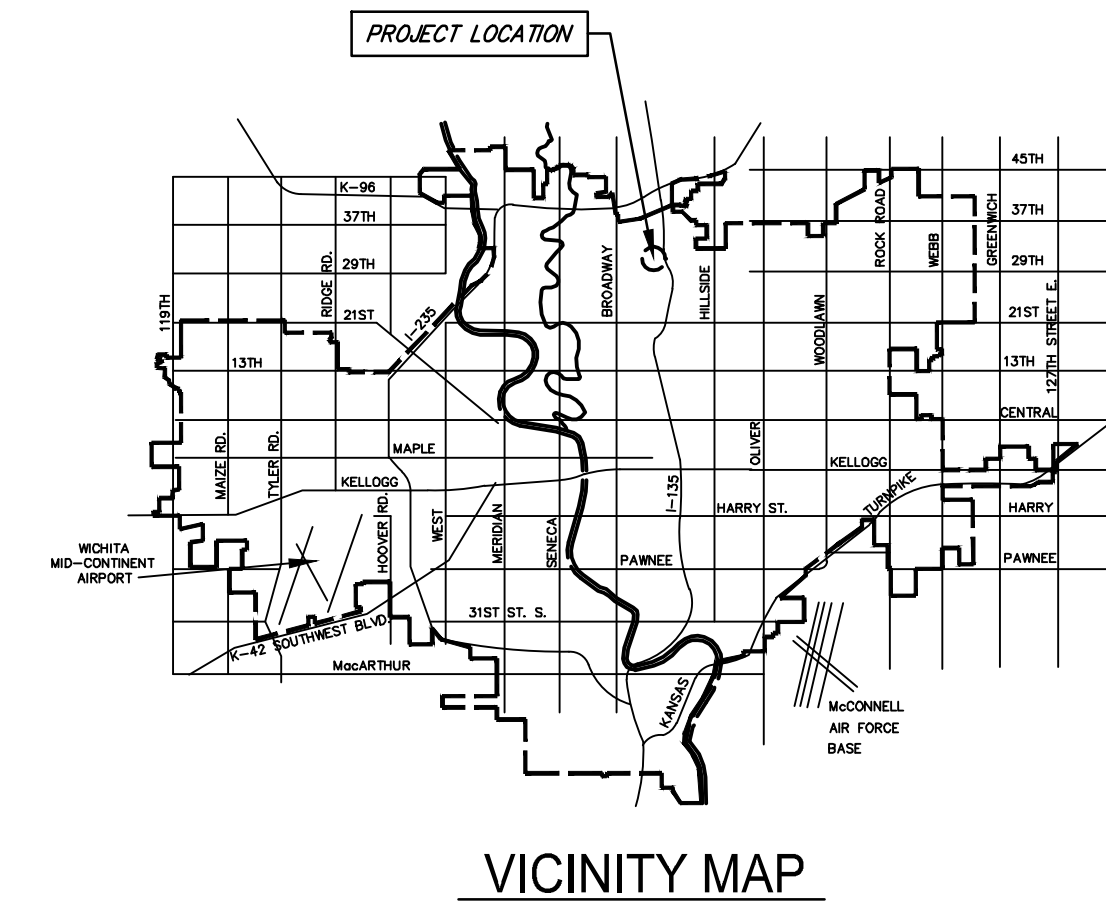


STORMWATER PLAN to Serve TRUCK FUEL STATION PROJECT NUMBER 55 PPD (607861) City of Wichita



TRUCK FUEL STATION
UNIVERSAL MOTOR FUELS
1231 E. 29th NORTH,
WICHITA, KANSAS



ALBERTSON ASSOCIATES L.L.C.
9225 PEPPER TREE WICHITA, KS 67226 316 636-9472 jim@albertson.com



© copyright 2008
ALBERTSON ASSOCIATES L.L.C.
The drawing and all information herein is the exclusive property of, and constitutes the confidential and proprietary work of Albertson Associates, L.L.C. and shall not be copied or used in any way without the express written consent of Albertson Associates L.L.C.

C1.3

REV. DATE	5-16-11
PRINT DATE	5-03-11

BENCHMARKS

SITE BENCH MARK #1:
Square cut top curb 19'W & 10'S
of the NW Corner Lot 1, Maloney Addition.
Elevation = 1314.61 (NAVD88)

SITE BENCH MARK #2:
Square cut top curb 40'W & 22'N
of the NE corner subject Property.
Elevation = 1315.75 (NAVD88)

TREATMENT TRAINS & SITE TREATMENT TOTAL

BASIN A	BASIN C
AREA= 0.37 ACRES	AREA= 0.33 ACRES
1. DRY DETENTION TSS= 60%	1. FILTER STRIP TSS= 50%
BASIN B	2. GRASS LINED SWALE TSS= 50%
AREA= 0.70 ACRES	3. DRY DETENTION TSS= 60%
1. FILTER STRIP TSS= 50%	TSstrains = 50 + 50 - (50 x 50) = 75%
2. GRASS LINED SWALE TSS= 50%	TSstrains = 75 + 60 - (75 x 60) = 90%
3. DRY DETENTION TSS= 60%	TSstrains = 75 + 60 - (75 x 60) = 90%
TSstrains = 50 + 50 - (50 x 50) = 75%	TSstrains = 75 + 60 - (75 x 60) = 90%
TSstrains = 75 + 60 - (75 x 60) = 90%	
SITE TREATMENT TOTAL	
TSS SITE = 0.40(60)+0.7(90)+0.33(90)+0.03(0) = 80%	
1.46	

SITE CALCULATIONS

Site Area 1.46 Acres

PRE-CONSTRUCTION SITE CALCULATIONS

Existing Impervious	0.00 Acres	(0.0% of Site)
Existing Pervious	1.46 Acres	(100.0% of Site)

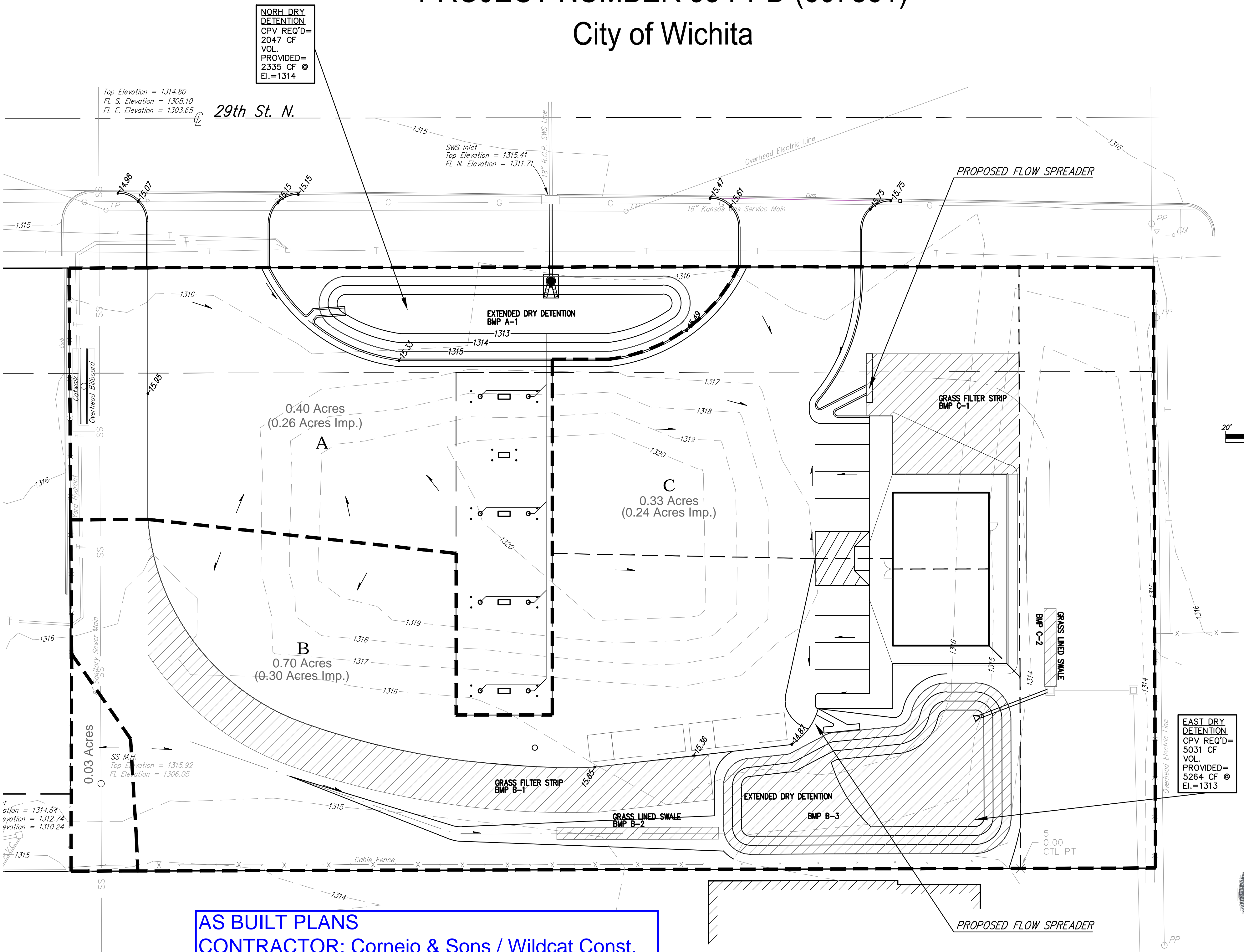
POST-CONSTRUCTION SITE CALCULATIONS

Impervious Area	0.80 Acres	(54.8% of Site)
Pervious Area	0.66 Acres	(45.2% of Site)

LEGEND

- DIRECTION OF FLOW
- ▨ WATER QUALITY BEST MANAGEMENT PRACTICE

Ruggles & Bohm, P.A.
Engineering, Surveying, Land Planning
924 North Main (316) 264-8008
Wichita, Kansas 67203 (316) 264-4621 fax
www.rbkansas.com E-mail: info@rbkansas.com



NORH. DRY DETENTION
CPV REQ'D= 2047 CF
VOL PROVIDED= 2335 CF
EI.=1314

EAST DRY DETENTION
CPV REQ'D= 5031 CF
VOL PROVIDED= 5264 CF
EI.=1313

AS BUILT PLANS
CONTRACTOR: Cornejo & Sons / Wildcat Const.
INSPECTOR: RUGGLES & BOHM
.PDF BY: ALEX LANE, 5-7-2012

APPROVED AS NOTED
BY CITY ENGINEER OF WICHITA

Storm Water Maint *[Signature]* 10-24-11
Engineering *[Signature]* 10-24-11

NOTE TO CONTRACTORS

Inspection and testing for this project are to be provided by a Licensed Consulting Engineering Firm under contract with the Owner/Developer. Said inspection to be in accordance with the City of Wichita standard construction engineering practices and certified by a Licensed Professional Engineer. No work shall be performed in dedicated easements or public right-of-way by the Contractor without such inspection, nor shall any work be commenced without written authorization by the City Engineer.



DWG FILE: ENGINEERING BASE
PROJECT NO. 3805E
June 1, 2011