

WL CURVE DATA				
$\Delta=35^{\circ}6'31''$ Lt D= 31' 28" 52.3' R= 182.00' L= 111.52' T= 57.57' E= 8.89'				
CURVE DATA BASED ON \odot RADIUS $\Delta/2= 17^{\circ} 33' 15.5''$				
WL STATION	WL ARC LENGTH	CHORD LENGTH ON -7' OFFSET Left	DEFLECTION ANGLE	TOTAL DEFLECTION
PC 0+12.52			0°00'00.0"	0°00'00.0"
0+25.00	12.48'	12.00'	1°57'51.9"	01°57'51.9"
0+50.00	25.00'	24.02'	3°56'06.6"	05°53'58.5"
0+75.00	25.00'	24.02'	3°56'06.6"	09°50'05.0"
1+00.00	25.00'	24.02'	3°56'06.6"	13°46'11.6"
PT 1+24.04	24.04'	23.10'	3°47'02.6"	17°33'15.6"
TOTAL	L= 111.52'	Defl./ft.= 9.444359 min.		

WL CURVE DATA				
$\Delta=12^{\circ}19'11''$ Rt D= 25' 21" 7.6' R= 226.00' L= 48.59' T= 24.39' E= 1.31'				
CURVE DATA BASED ON \odot RADIUS $\Delta/2= 6^{\circ} 9' 35.5''$				
WL STATION	WL ARC LENGTH	CHORD LENGTH ON -7' OFFSET Left	DEFLECTION ANGLE	TOTAL DEFLECTION
PC 1+24.04			0°00'00.0"	0°00'00.0"
1+25.00	0.96'	0.99'	0°07'18.1"	00°07'18.1"
1+50.00	25.00'	25.76'	3°10'08.5"	03°17'26.5"
PT 1+72.63	22.63'	23.32'	2°52'06.9"	06°09'35.5"
TOTAL	L= 48.59'	Defl./ft.= 7.605635 min.		

WL CURVE DATA				
$\Delta=80^{\circ}57'2''$ Lt D= 46' 57" 49.5' R= 122.00' L= 172.37' T= 104.11' E= 38.38'				
CURVE DATA BASED ON \odot RADIUS $\Delta/2= 40^{\circ} 28' 31''$				
WL STATION	WL ARC LENGTH	CHORD LENGTH ON -7' OFFSET Left	DEFLECTION ANGLE	TOTAL DEFLECTION
PC 3+72.44			0°00'00.0"	0°00'00.0"
3+75.00	2.56'	2.41'	0°36'04.1"	00°36'04.1"
4+00.00	25.00'	23.52'	5°52'13.7"	06°28'17.8"
4+25.00	25.00'	23.52'	5°52'13.7"	12°20'31.5"
4+50.00	25.00'	23.52'	5°52'13.7"	18°12'45.2"
4+75.00	25.00'	23.52'	5°52'13.7"	24°04'58.9"
FH 4+84.58	9.58'	9.03'	2°14'58.4"	26°19'57.4"
5+00.00	15.42'	14.53'	3°37'15.3"	29°57'12.6"
5+25.00	25.00'	23.52'	5°52'13.7"	35°49'26.3"
PT 5+44.81	19.81'	18.65'	4°39'06.3"	40°28'31.1"
TOTAL	L= 172.37'	Defl./ft.= 14.089126 min.		

\odot N. Chateau Parkway, Sta. 14+89.02=
@ Glengate Circle, Sta. 10+00.00

N: 386,162.6423, E: 2,371,828.5917
@ Glengate Circle, Sta. 10+41.20, 20' Rt.=
WL 1, Sta. 0+00.00
Existing Blowoff Assembly *
Remove 8" CI MJ Cap and begin
new 8" water main installation.

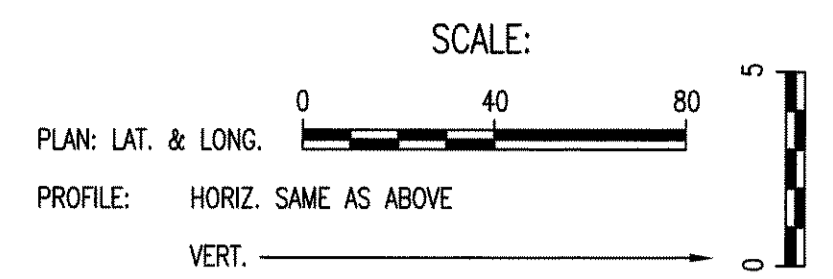
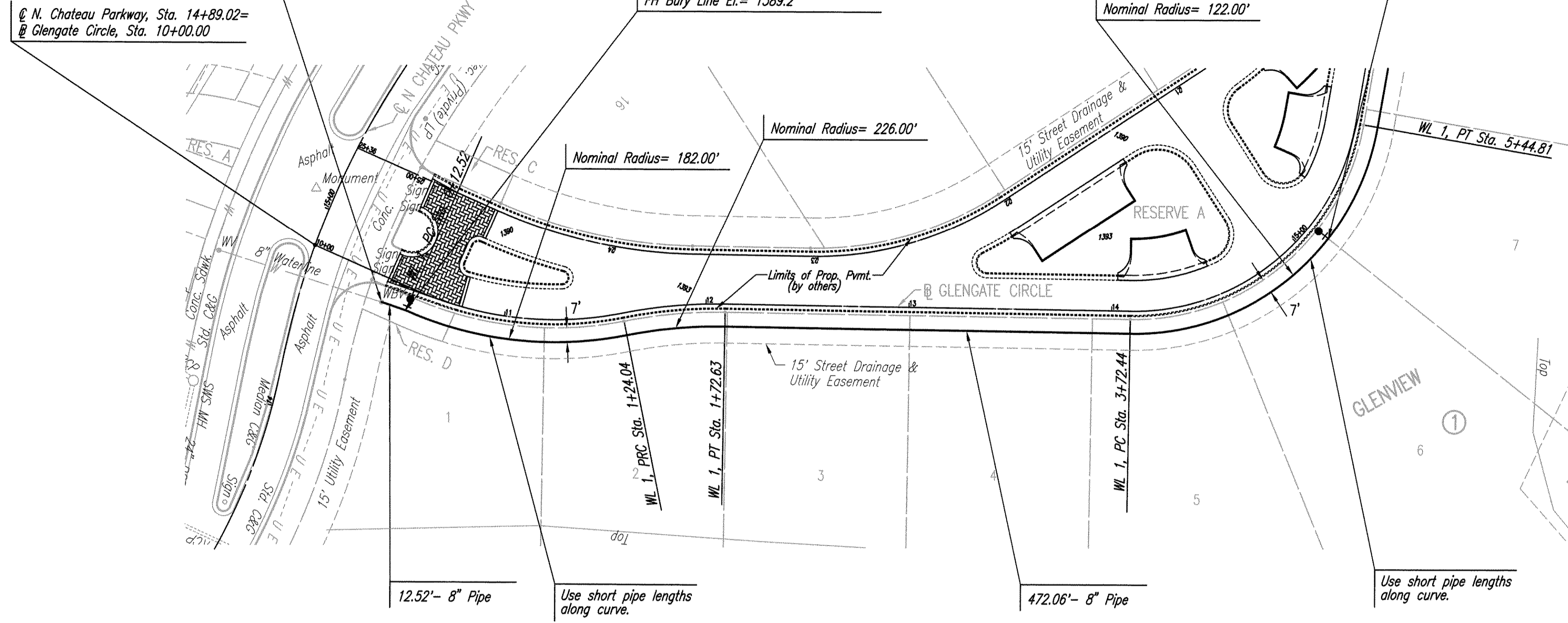
N: 386,158.3590, E: 2,371,842.1326
@ Glengate Circle, Sta. 10+53.67, 11' Rt.=
WL 1, Sta. 0+12.52
1- Fire Hydrant Assembly
L= 4'
Top Valve Box El.= 1389.3
FH Bury Line El.= 1389.2

N: 386,194.9930, E: 2,372,297.0611
@ Glengate Circle, Sta. 15+11.24, 11' Rt.=
WL 1, Sta. 4+84.58
1- Fire Hydrant Assembly
L= 4'
Top Valve Box El.= 1389.5
FH Bury Line El.= 1389.4
1- 8" x 6" CI MJ Reducer (N)

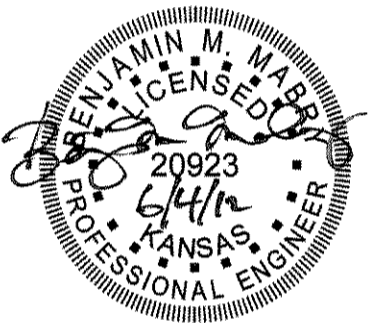
DATE	
BY	
CHECKED	CHECKED
PLAN	CHECKED

DATE	
BY	
CHECKED	CHECKED
PROFILE	CHECKED

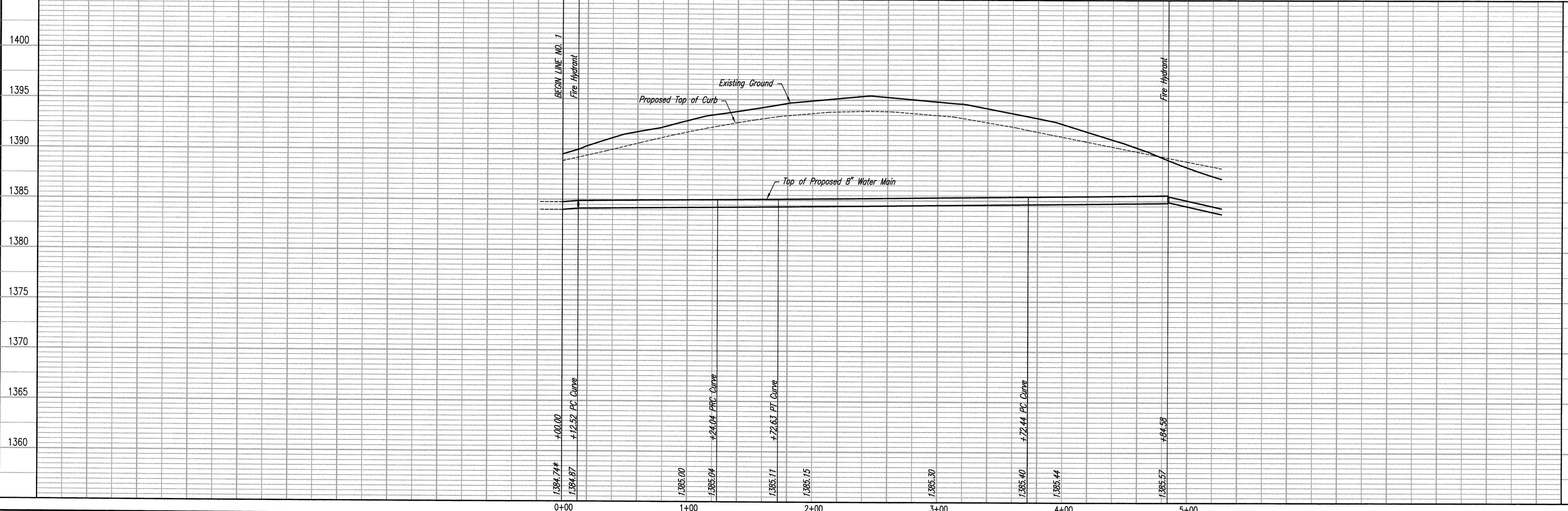
Saved 05-30-2012 10:55:48 AM by RFL
Plot Scale 1:40 06-04-2012 10:40:52 AM by ROB E. JOHNSON
C:\2011\1339\003\1339-003-04-WLPP01



* PRIOR TO BEGINNING CONSTRUCTION, THE CONTRACTOR SHALL EXCAVATE THE EXISTING 8" WATERLINE AT STATION 0+00.00 TO VERIFY PIPE SIZE, TYPE, FITTINGS, AND HORIZONTAL AND VERTICAL LOCATION. THE CONTRACTOR SHALL REPORT HIS FINDINGS TO THE ENGINEER SO THAT ANY NECESSARY PLAN MODIFICATIONS CAN BE MADE. ANY ADDITIONAL LABOR OR MATERIALS NECESSARY TO COMPLETE THE CONNECTION SHALL BE CONSIDERED SUBSIDIARY TO THE PROJECT.



WATERLINE NO. 1



GLENVIEW
WATER DISTRIBUTION SYSTEM IMPROVEMENTS
WATERLINE NO. 1

Professional Engineering Consultants, P.A.
303 S. TOPEKA • WICHITA, KANSAS 67202
316-262-2691 • FAX 316-262-3003

Designed By: MDK
Drawn By: JAN, CSL
Job No.: 35-11339-002
Date: August 2011

GARY JANZEN, P.E. - INTERIM, CITY ENGINEER
CITY OF WICHITA PROJECT NO. 448-90652