

BENCHMARKS:
 BM #1:
 RR Spike in CATV Pole, 85' east and 77' south of SE corner of Woods North 3rd Addition.
 Elev. = 1383.00 NAVD88

BM #2:
 " " cut at centerline of inlet adjacent to Lot 29, Block A, Woods North 2nd Addition.
 Elev. = 1387.12 NAVD88

BM #3:
 Cross cut on north end of west headwall 137.5' south & 12' west of the intersection of 29th St N & 127th St E.
 ELEV. = 1382.45 NAVD88

WOODS NORTH
 ADDITION

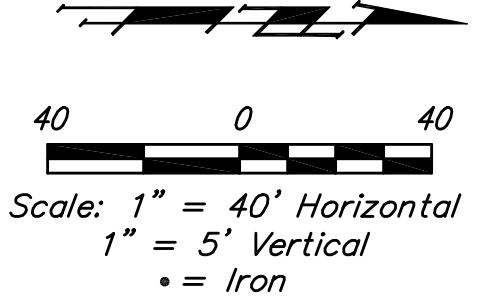
CAUTION!
 Existing Gas Line Near Water Line Connection. Contractor to contact Tanya Kahr, Kansas Gas Service at 832-3178 to coordinate gas line adjustment if necessary.

Existing Concrete Rubble and Washout. Contractor to remove and dispose of existing rubble and washout as necessary for construction. Cost incidental to "Site Clearing."

Remove, Do not replace existing sidewalk as necessary for water line construction. Sidewalk removed shall be removed from site.

WL Sta 0+00, Begin Line 1 = BL Sta 0+99.60, 28.20' Lt. Remove existing blowoff assembly and extend pipe northeast. Contractor to verify depth & location of existing water line prior to construction.

BL = CL Woodridge

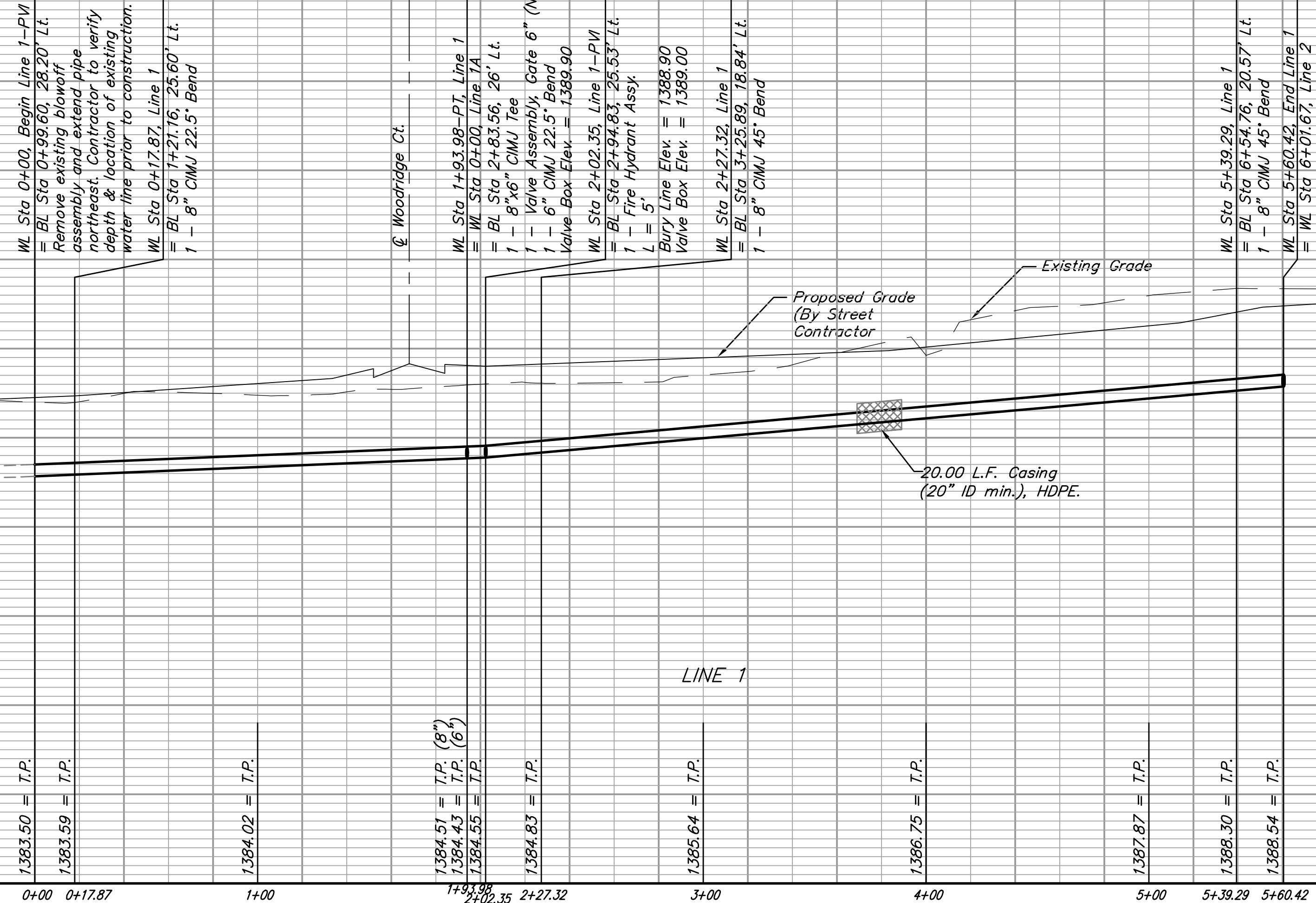


Curve #1
 Curve Data Based on Waterline
 Rad. = 176' Delta = 40.27' Ang. = 64.87'
 Arc = 124.29' L.C. = 121.73' Def./Ft. = 9.76667 Min.

Station	Chord Lengths	Chord	Defl.	Total Defl.
0+99.60	5.31'	5.49'	0.1800"	0.1800"
0+75.00	25.00'	25.83'	4.0410"	4.2210"
1+00.00	25.00'	25.83'	4.0410"	8.2620"
1+25.00	25.00'	25.83'	4.0410"	12.3030"
1+50.00	25.00'	25.83'	4.0410"	16.3440"
1+75.00	25.00'	25.83'	4.0410"	20.3850"
1+93.98	18.98'	19.62'	3.0522"	23.4372"



DEPTH UNKNOWN
 Contractor to Verify Depth & Location of Existing Water Line Prior to Construction.



B Baughman
 WOODS NORTH 3RD ADD. PH. I
LINE 1
 WATER DISTRIBUTION SYSTEM

Baughman Company, P.A. 315 Ellis St. Wichita, KS 67211 P 316-262-7271 F 316-262-0149
 ENGINEERING | SURVEYING | PLANNING | LANDSCAPE ARCHITECTURE

PROJECT NUMBER: 448-90554
 DESIGN: AEG
 DRAWN: TMS
 APPROVED: [Signature]
 DATE: 06/12

REVISIONS:
 SCALE: Noted
 SHEET: 3 OF 13

03-06_Wtr1.dwg 09-12-E427