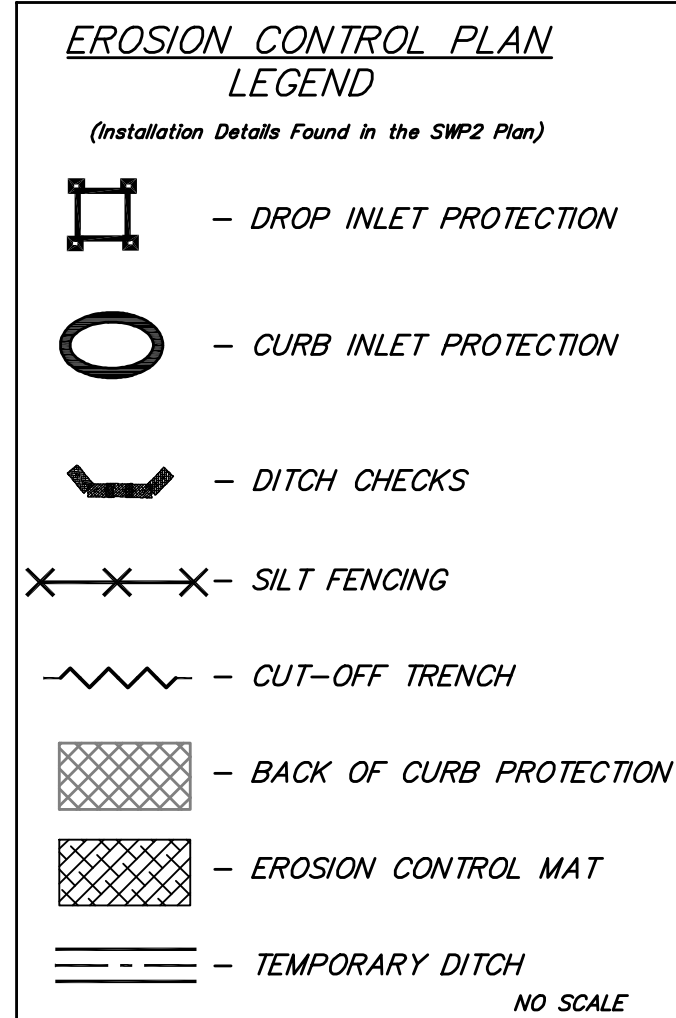


EROSION CONTROL MEASURE	INSTALL	MAINTAIN	REMOVE
BACK OF CURB PROTECTION (LF)	0	0	0
CONSTRUCTION ENTRANCE (EA)	0	1	0
CURB INLET BARRIER (EA)	0	2	0
DITCH CHECK (EA)	0	0	0
DROP INLET PROTECTION (EA)	0	2	0
EROSION CONTROL (LS)	0	0	0
EROSION CONTROL BERM (LF)	0	520	0
SILT FENCE (LF)	0	1,007	0
EROSION CONTROL MAT (SY)	0	0	0

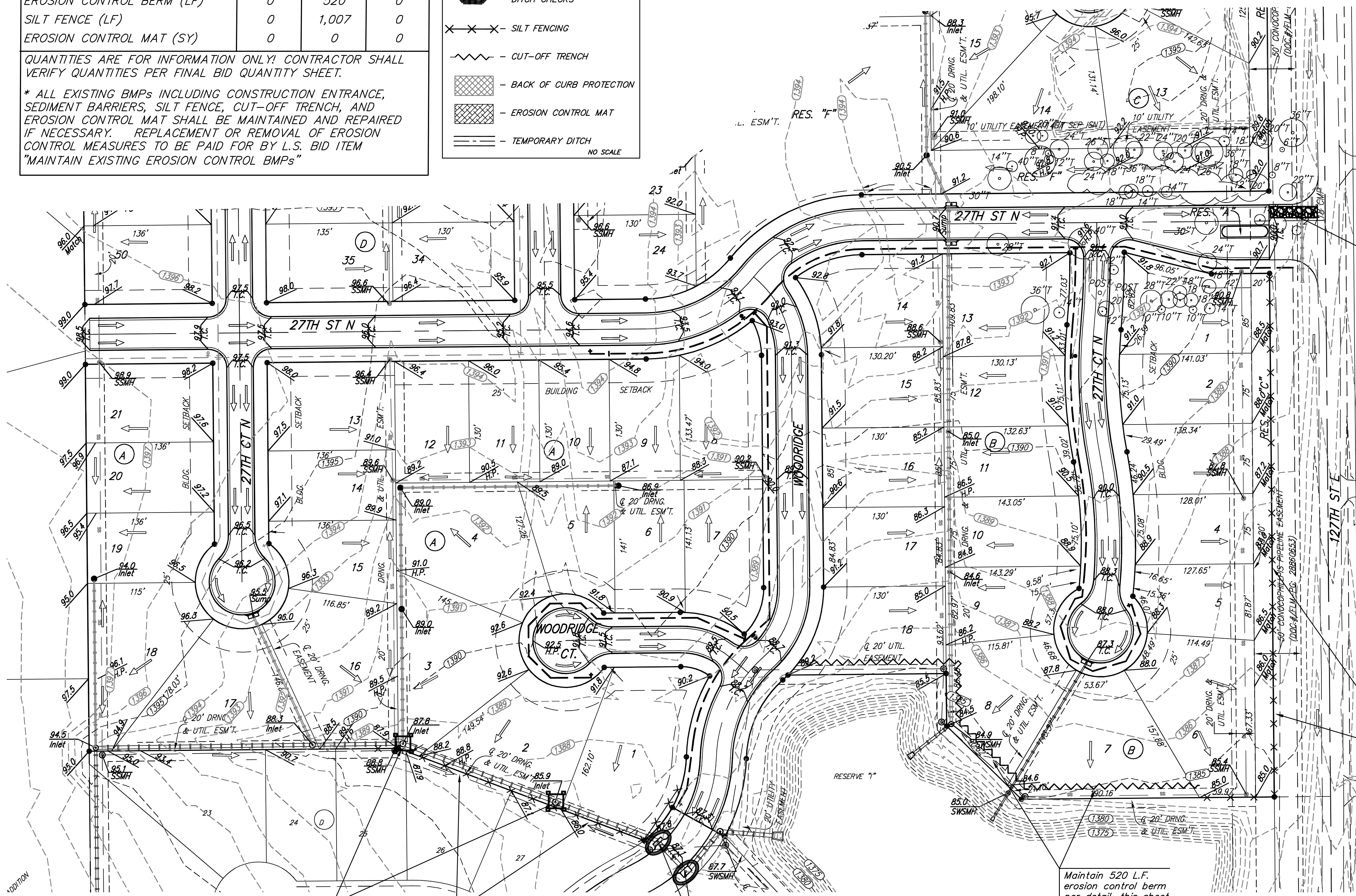
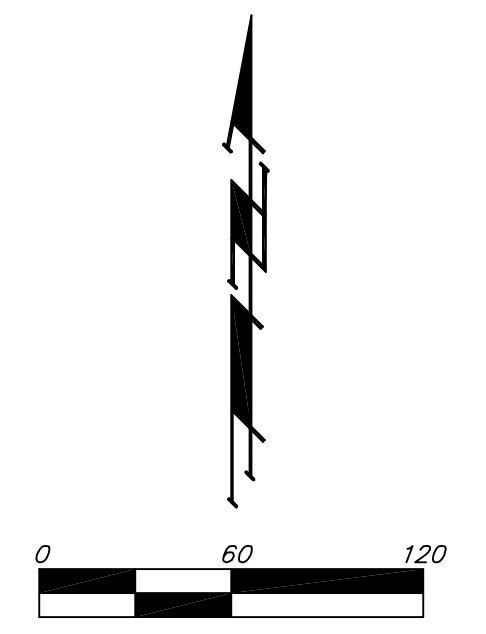
QUANTITIES ARE FOR INFORMATION ONLY! CONTRACTOR SHALL VERIFY QUANTITIES PER FINAL BID QUANTITY SHEET.

\* ALL EXISTING BMPs INCLUDING CONSTRUCTION ENTRANCE, SEDIMENT BARRIERS, SILT FENCE, CUT-OFF TRENCH, AND EROSION CONTROL MAT SHALL BE MAINTAINED AND REPAIRED IF NECESSARY. REPLACEMENT OR REMOVAL OF EROSION CONTROL MEASURES TO BE PAID FOR BY L.S. BID ITEM "MAINTAIN EXISTING EROSION CONTROL BMPs"

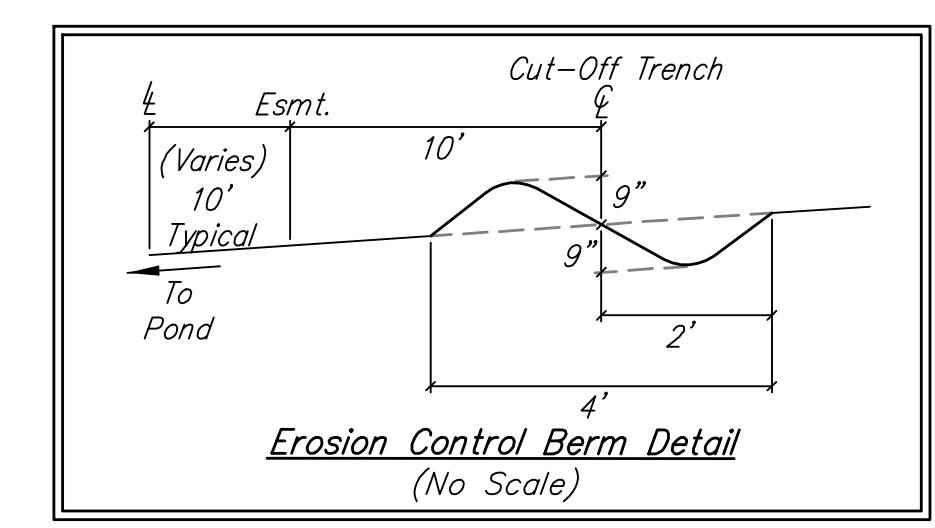


BENCHMARK:  
CROSS CUT ON NORTH END OF WEST HEADWALL  
137.5' SOUTH & 12' WEST OF THE INTERSECTION  
OF 29TH ST N & 127TH ST E.  
ELEV. = 1382.45 NAVD88

---(1395)--- EXISTING CONTOUR



Maintain 50'x12' gravel construction entrance per detail, sheet 8.



Maintain 640 L.F. silt fence per detail, sheet 9.

Maintain 520 L.F. erosion control berm per detail, this sheet.

Maintain drop inlet sediment barriers per detail, sheet 10.

Maintain 367 L.F. silt fence per detail, sheet 9.

Maintain curb inlet sediment barriers per detail, sheet 8.

	WOODS NORTH 3RD ADD. PH. I	
	<b>EROSION CONTROL PLAN</b>	
WATER DISTRIBUTION SYSTEM		
<small>Baughman Company, P.A. 315 Ellis St. Wichita, KS 67211 P 316-262-7271 F 316-262-0149 ENGINEERING   SURVEYING   PLANNING   LANDSCAPE ARCHITECTURE</small>		
PROJECT NUMBER 448-90554	DESIGN AEG	DRAWN TMS
REVISIONS:	APPROVED	DATE 06/12
	SCALE Noted	SHEET
<b>7 OF 13</b>		