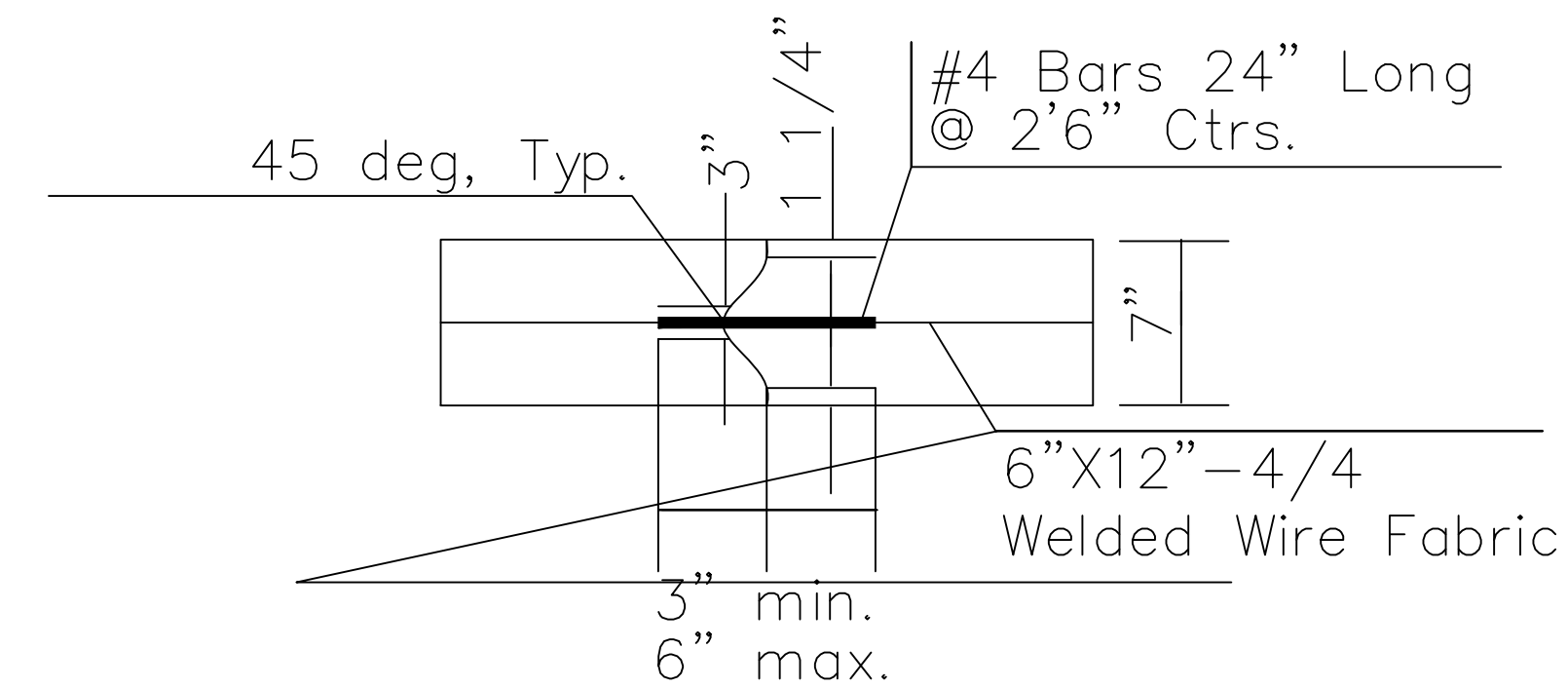
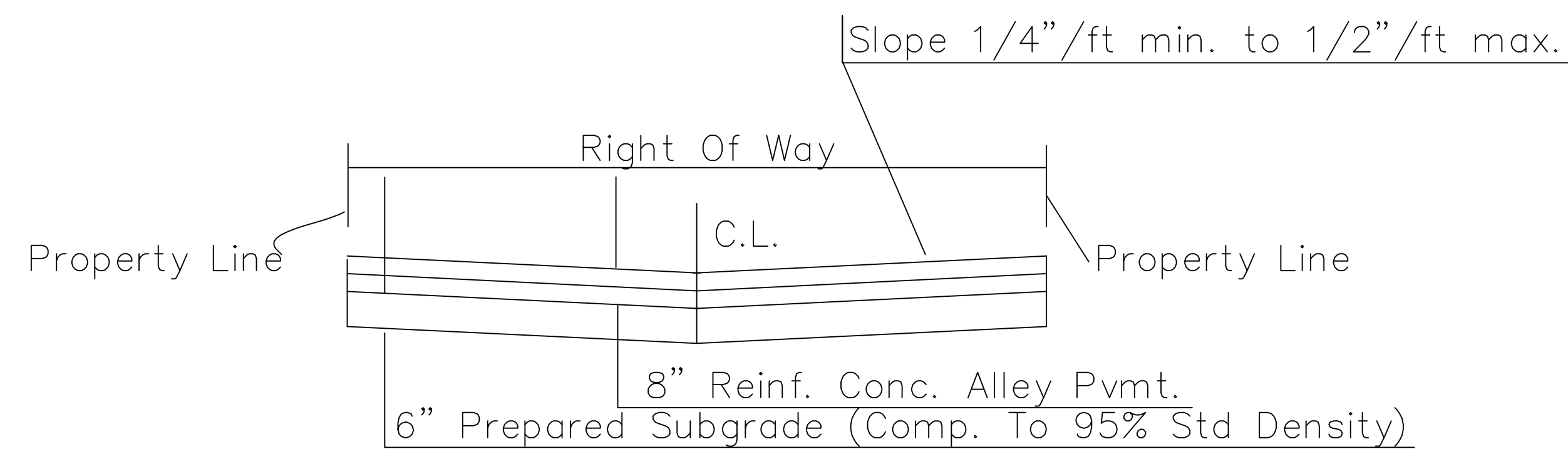


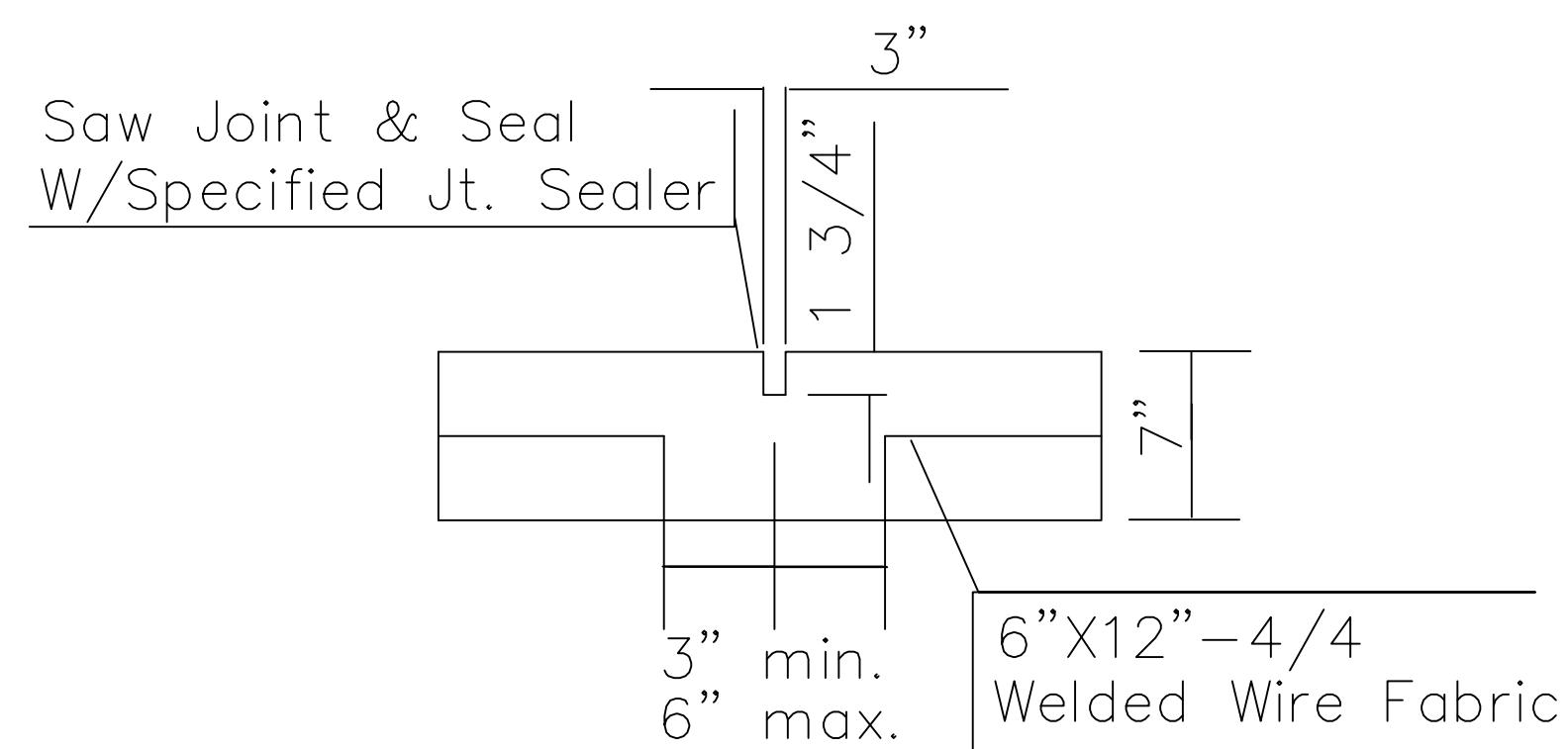
SLAB REINFORCEMENT DETAIL



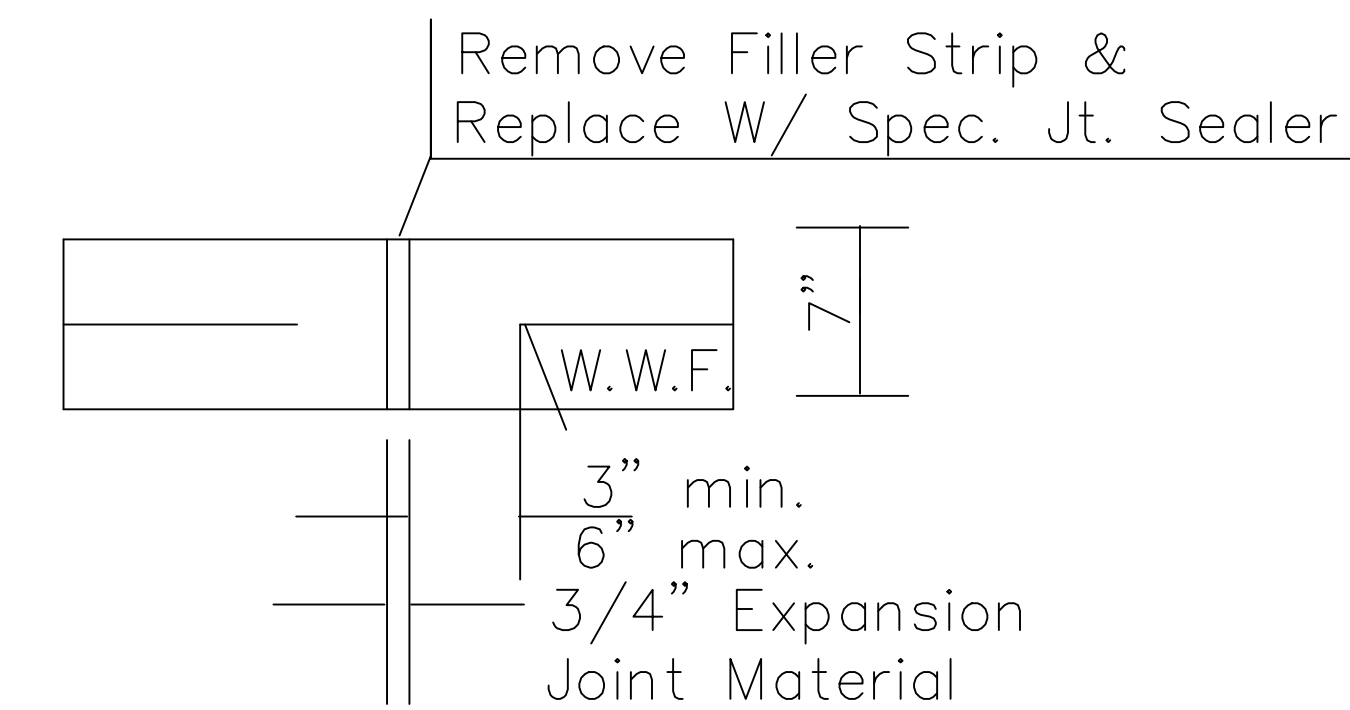
LONGITUDINAL CONSTRUCTION JOINT



TYPICAL PAVEMENT SECTION



CONTRACTION JOINT



EXPANSION JOINT



<b>REINFORCED CONCRETE ALLEY PAVING DETAIL</b>			
CITY ENGINEER <b>JAMES L. ARMOUR, P.E., L.S.</b> ACTING			
PROJECT NUMBER XXX-XXXX	OCA NUMBER XXXXXX	DATE MM/YY	
CITY ENGINEER'S OFFICE CITY HALL - SEVENTH FLOOR 455 NORTH MAIN STREET WICHITA, KANSAS 67202-1620 (316) 268-4501 (316) 268-4114 FAX		DESIGN ABC	DRAWN DEF
SHEET		89 OF 374	

No.	Date	By	Approved	Revision
1				
<b>13th STREET NORTH FROM KANSAS TO OLIVER STREET &amp; DRAINAGE IMPROVEMENTS</b> STANDARD DETAIL SHEET <b>CITY OF WICHITA, KANSAS</b> JAMES L. ARMOUR, P.E. - CITY ENGINEER				
<b>POE &amp; ASSOCIATES, INC.</b> CONSULTING ENGINEERS 5940 E. Central, Suite 200 • Wichita, KS 67208-4242 Phone 316/605-4114 • FAX 316/605-4444				
Designed By: JPD	Drawn By: MLT	Date: March 2012		
Sheet 89 of 374				