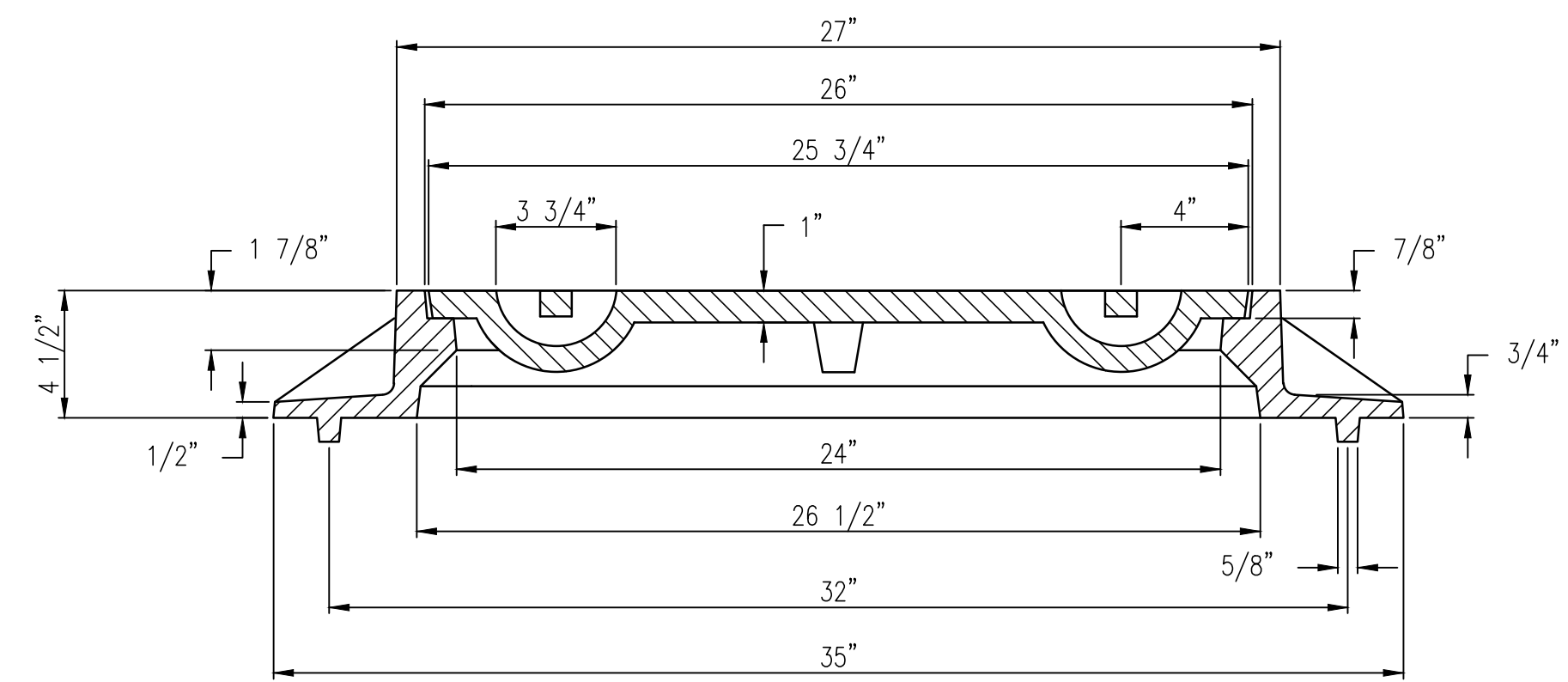
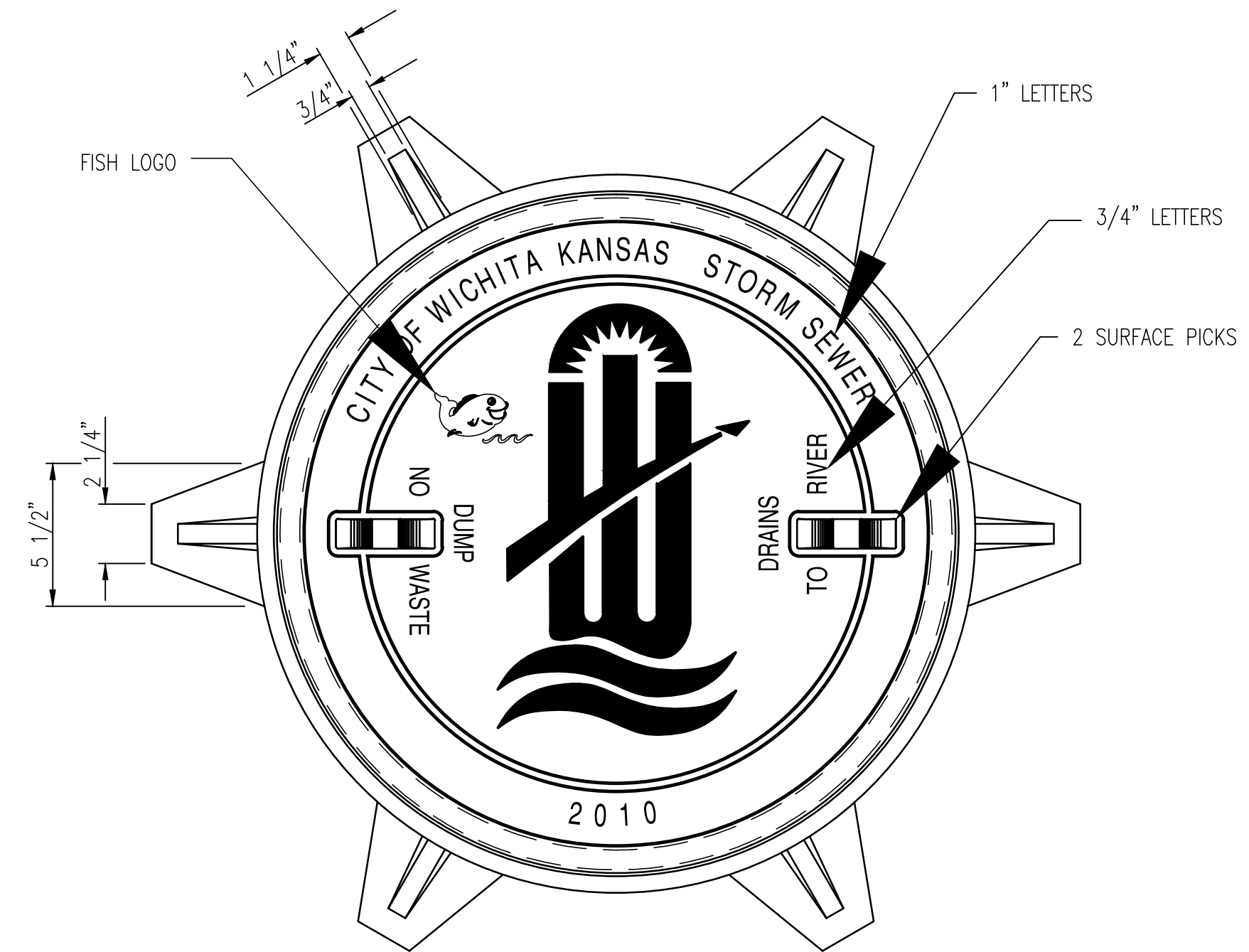


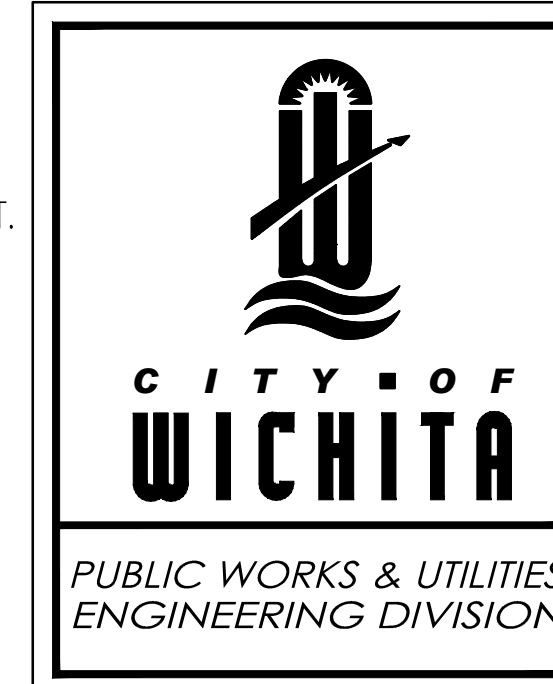
MANHOLE FRAME
DEETER #1261 OR EJIW #1936-Z1

- NOTE:
1. FURNISHED WITH MACHINED HORIZONTAL BEARING SURFACE.
 2. COVER TO BE DEETER #1261 OR EJIW #1936A.



INLET FRAME
DEETER #2014 OR EJIW #1936-Z4

- NOTE:
1. FURNISHED WITH MACHINED HORIZONTAL BEARING SURFACES.
 2. NOT TO BE USED UNDER PAVEMENT.
 3. COVER TO BE DEETER #1261 OR EJIW #1936A.



MANHOLE/INLET FRAME AND COVER (STORM SEWER)		
CITY ENGINEER JAMES L. ARMOUR, P.E., L.S.		
PROJECT NUMBER 472-84320	OCA NUMBER 706933	DATE 03/2012
CITY ENGINEER'S OFFICE CITY HALL - SEVENTH FLOOR 455 NORTH MAIN STREET WICHITA, KANSAS 67202-1620 (316) 268-4501		DESIGN DRAWN SHEET

No.	Date	By	Approved	Revision
<p>13TH STREET NORTH FROM HYDRAULIC TO OLIVER STREET & DRAINAGE IMPROVEMENTS MANHOLE/INLET FRAME & COVER (STORM SEWER) CITY OF WICHITA, KANSAS JAMES L. ARMOUR, P.E., L.S. - CITY ENGINEER C.O.W. Proj.# 472-84320 O.C.A.# 706933</p>				
<p>POE & ASSOCIATES, INC. CONSULTING ENGINEERS 5940 E. Central, Suite 200 ■ Wichita, KS 67208-4242 Phone 316.685.4114 ■ FAX 316.685.4444</p>				
<p>FINAL</p>				
Designed By: J. DICKMAN		Date: March 2012		
Drawn By: M. TUCKER		Sheet		
Poe Job No.: 1871A		100 of 374		