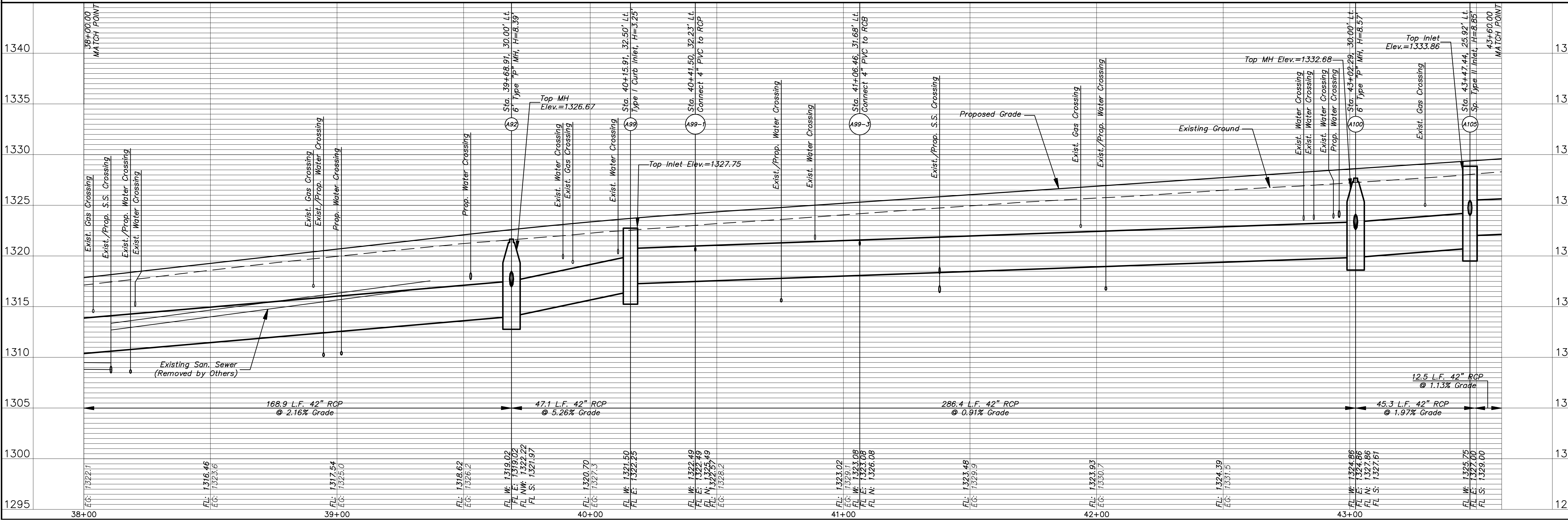
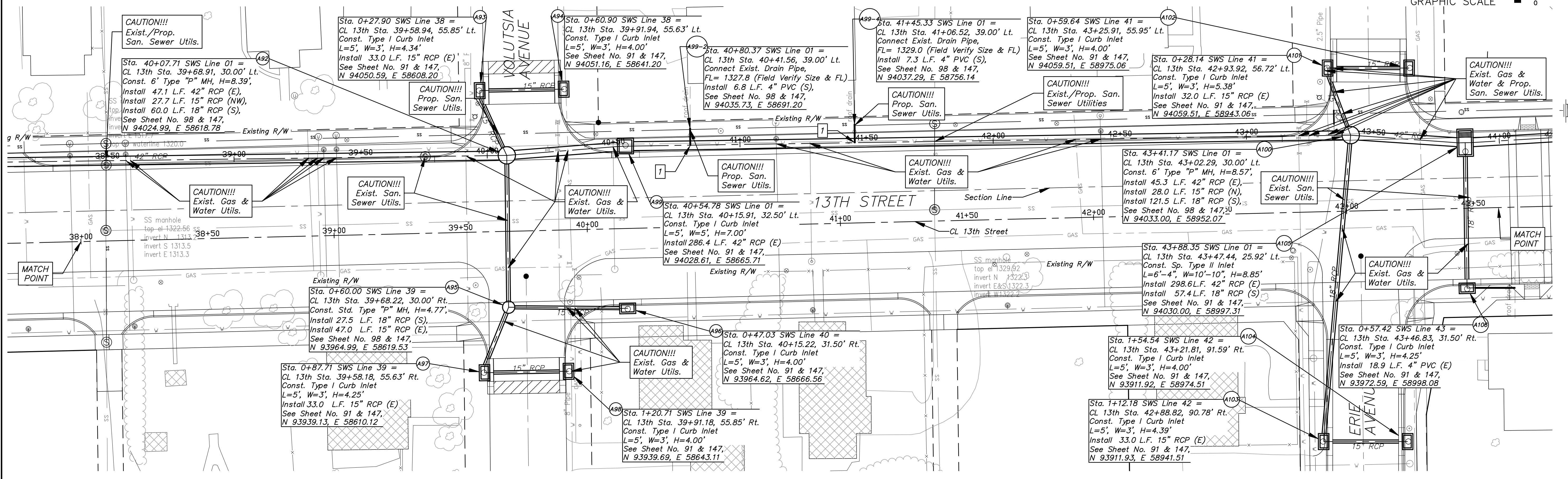
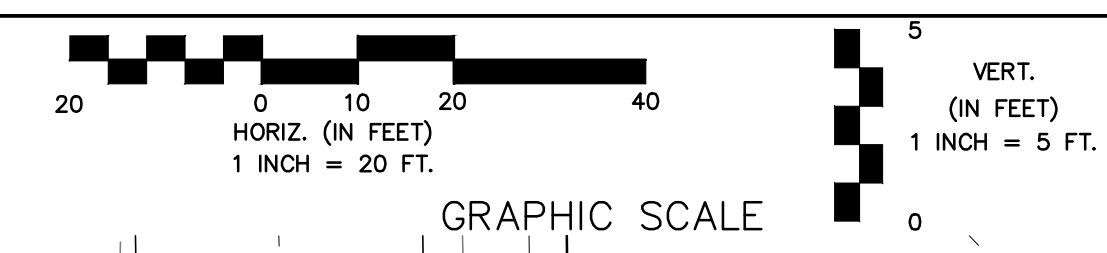


7 Connect SWS to Proposed RCB/RCP as Shown in Profile

Existing Structure to be Removed by Others



FINAL

Designed By: J. DICKMAN
 Drawn By: M. TUCKER
 P.O. Job No.: 1871A
 Date: March 2012

POE & ASSOCIATES, INC.
 CONSULTING ENGINEERS
 5940 E. Central, Suite 200 • Wichita, KS 67208-1242
 Phone 316/685-4114 • FAX 316/685-4444

13TH STREET NORTH FROM HYDRAULIC TO OLIVER
STREET & DRAINAGE IMPROVEMENTS
STORM SEWER PLAN & PROFILE
CITY OF WICHITA, KANSAS
 JAMES L. ARMOUR, P.E., L.S., CITY ENGINEER
 C.O.# 472-8420 O.C.# 709933

Revision: _____
 Date: _____
 By: _____
 Approved: _____

Sheet 109 of 374