

# STORM WATER SEWER PLANS FOR CHICK-FIL-A STORE #3015

LOT 4, PEARSON FARMS 3RD ADDITION  
PROJECT NO. 0060 PPD (607861)


THE CITY OF WICHITA  
JAMES L. ARMOUR, P.E. - CITY ENGINEER

## GENERAL NOTES

- Contractor will be required to provide notice to utility companies a minimum of forty-eight (48) hours prior to any excavation, as follows:  
Kansas One-Call 687-2470
- The Contractor must notify the following in case of an emergency:  
Cox Communications 262-4270  
Kansas Gas Service Company 1-888-482-4950  
Westar Energy (Electric) 383-8650  
Black Hills Energy (Gas) 1-800-303-0357  
Southwestern Bell Telephone Co. 1-800-286-8313  
City of Wichita Water Dept. (Water) 262-6000  
City of Wichita Sewer Maintenance (SS) 262-6000  
City of Wichita Storm Sewer Maintenance 268-4090  
City of Wichita Traffic Maintenance 268-4034
- All disturbed R/W areas not intended for pavement or sidewalk construction shall be seeded with Kansas Premium Fescue Blend at a rate of 8 lb./1000 SF, fertilized with a 16-20-6 ratio at a rate of 4 lb./1000 SF and mulched with Prairie Hay at a rate of 92 lb./1000 SF. Mulch shall be "patted" with forks or punched into soil to reduce loss due to wind.
- Utility service lines, poles, valve boxes, meters, et cetera are to be adjusted as necessary by others prior to construction unless the plans specifically call for their adjustment by the Contractor or unless the plans specifically identify a utility to be adjusted by its owner during construction. Existing utilities and their location, as shown on the plans represent the best information obtainable for design and shall be field verified. The contractor will be required to work around existing utilities within the right-of-way which do not conflict with proposed construction.
- All storm lines and appurtenances shall be installed in accordance with the most recent edition of City of Wichita, Kansas Standard Specifications for the Construction of City Projects.
- Contractor shall furnish the inspector with a copy of the manufacturer's certification for any pipe used on this project after completion of pipe installation. The engineer will not certify the project to the City until pipe certification has been received.
- Properties within the project limits may have underground sprinkler systems which conflict with new construction. Contractor will be required to remove such improvements should they not be removed by their owner at the time of construction. The Contractor will be required to salvage all sprinkler heads and/or valves and give such material to their owner. Portions of underground sprinkler systems not in conflict with new construction shall be protected from damage and shall remain in place. All work in connection with underground sprinkler systems shall be considered as subsidiary to the contract pay items of work.
- Contractor shall not start work on the project until the project inspector is assigned to the project and is present on the site. Contractor shall not start on the project until all necessary bonds and permits have been obtained. Bonds may include but are not limited to Statutory, Performance & Maintenance. Any work done without inspection will be required to be uncovered for inspection.
- Rubble from the removal of miscellaneous structures and excess excavation, which is to be wasted, shall be disposed of on sites to be provided by the Contractor. These sites shall be approved by the Engineer as to suitability, appearance and site location. Locations that, in the opinion of the Engineer, will leave an unsightly appearance will not be approved. All disposal sites must be approved by the Kansas Department of Health and Environment. Material either stockpiled or disposed of in a flood plain would require a Kansas State Board of Agriculture permit. Any material dumped in waters of the United States or wetlands is subject to U.S. Corps. of Engineers permitting regulations. Any material buried or stockpiled beyond approved construction limits would require additional archaeological investigations unless buried in a previously approved borrow location.

REDEVELOPMENT	
TOTAL AREA =	1.46 ACRES
IMPERVIOUS AREA =	1.14 ACRES
WQv =	0.03 AC-FT
CPv =	0.05 AC-FT

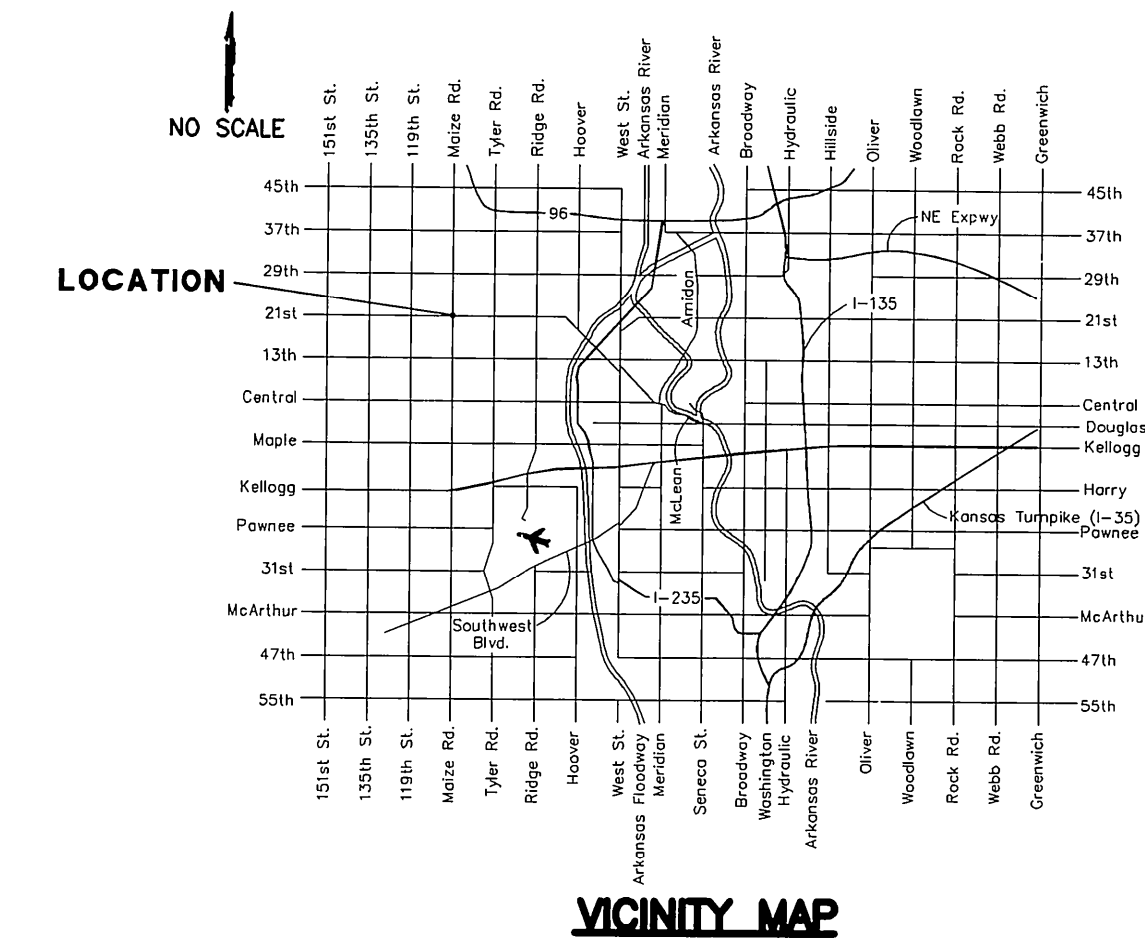
STORAGE & DISCHARGE SUMMARY		
ELEV.	STORAGE (AC-FT)	DISCHARGE (CFS)
1348.6	0.00	0.00
1349.0	0.001	0.00
1350.0	0.004	0.00
1351.0	0.037	0.311
1352.0	0.092	7.34
1352.5	0.137	9.66
1353.0	0.173	21.10

AS BUILT	
Contractor: Ewertz Excavation 7/13/2012	Project Inspector: Larry Gann  518 S. Market Wichita, KS 67202 (316)264-0242

DETENTION AREAS - PLANT SCHEDULE (BELOW 1351 CONTOUR)			
QTY.	COMMON NAME	BOTANICAL NAME	NOTES
250	SWEET FLAG	ACORUS CALAMUS	PLACE @ 2' O.C. BELOW 1351 CONTOUR
250	FRANK'S SEDGE	CAREX FRANKII	" "
250	SOFT RUSH	JUNCUS EFFUSUS	" "
250	BLUE VERVAIN	VERBENA HASTATA	" "

### NOTES:

- PLANTINGS SHALL BE SPORADIC TO CREATE A NATURALIZED APPEARANCE.
- DETENTION AREA PLANTS SHALL BE DEEP-CELL PLUGS
- DETENTION AREAS ABOVE THE 1351 CONTOUR SHALL BE FESCUE SOD.
- BIOSWALE FILL SHALL BE PLACED ON AREA BELOW 1351 CONTOUR.



**SITE BENCH MARK 1**  
CUT BOX ON CAISSON FOR LIGHT STANDARD  
ELEVATION = 1354.52

## INDEX

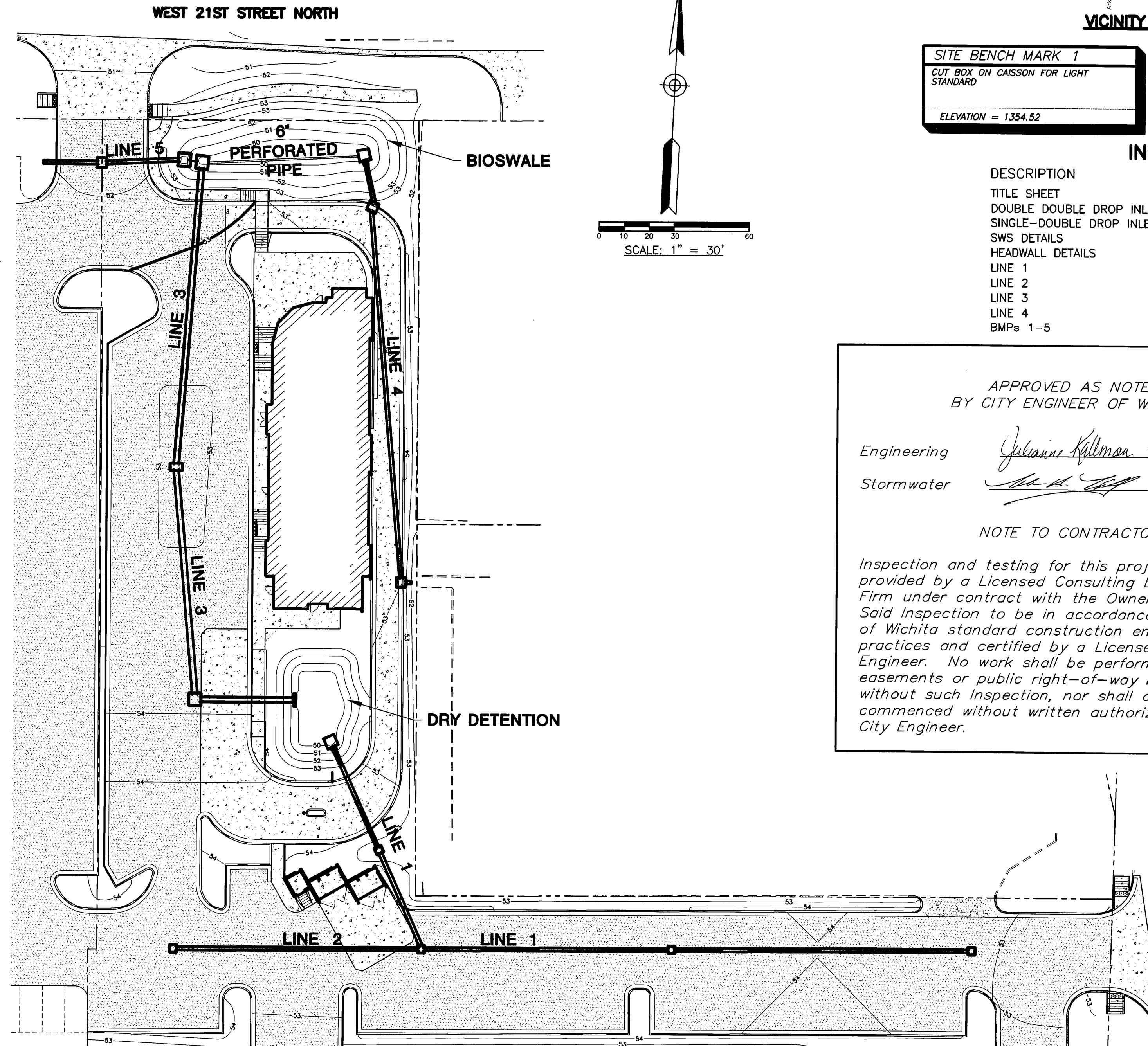
DESCRIPTION	SHEET NO.
TITLE SHEET	1
DOUBLE DOUBLE DROP INLET DETAILS	2
SINGLE-DOUBLE DROP INLET DETAILS	3
SWS DETAILS	4
HEADWALL DETAILS	5
LINE 1	6
LINE 2	7
LINE 3	8
LINE 4	9
BMPs 1-5	10-14

APPROVED AS NOTED  
BY CITY ENGINEER OF WICHITA

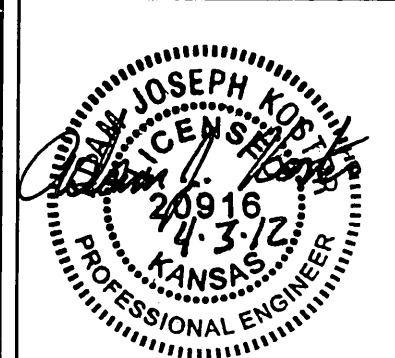
Engineering *Julianne Kellman 4-5-12*  
Stormwater *James L. Armour 4-5-12*

### NOTE TO CONTRACTORS

Inspection and testing for this project are to be provided by a Licensed Consulting Engineering Firm under contract with the Owner/Developer. Said inspection to be in accordance with the City of Wichita standard construction engineering practices and certified by a Licensed Professional Engineer. No work shall be performed in dedicated easements or public right-of-way by the Contractor without such inspection, nor shall any work be commenced without written authorization by the City Engineer.



**MKEC**  
ENGINEERING  
CONSULTANTS, INC.  
411 N. WEBB ROAD  
WICHITA, K.S. 67206  
316-684-9600



STORM WATER SEWER PLANS FOR  
**CHICK-FIL-A**  
WICHITA, KANSAS

### TITLE SHEET

SHEET TITLE  
1201010135  
PROJECT NUMBER

AJK / DM / GJA  
DESIGNED / DRAWN / CHECKED

ISSUED  
March 2012

REVISED

SHEET NO.

1 of 14