

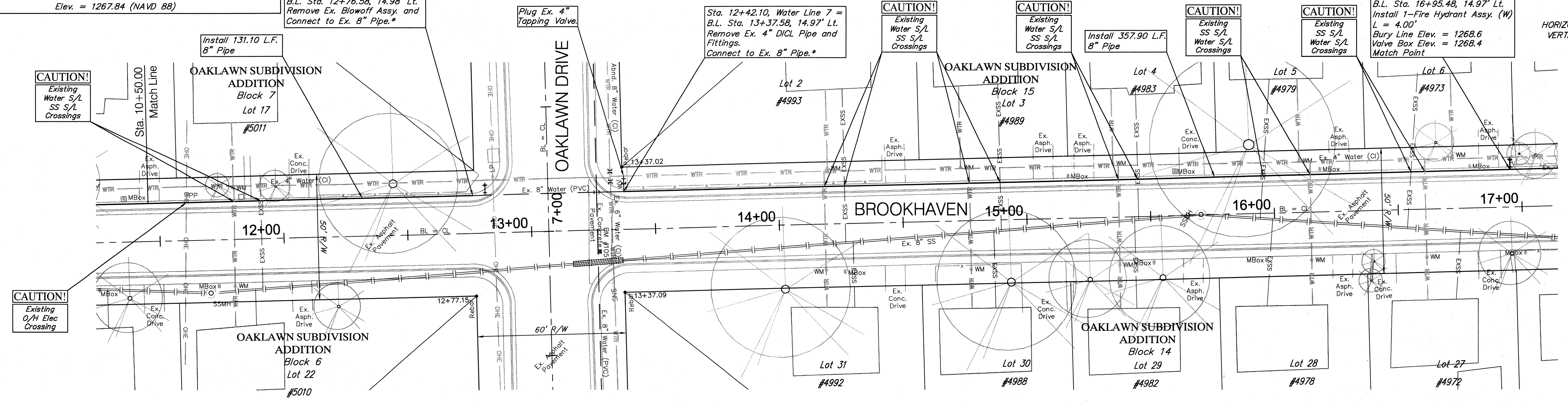
BENCHMARK:  
 BM #105 - Chiseled "+" 8.0' East and 19.7' North of the Centerlines of Both Brookhaven & Oaklawn Drive.  
 Elev. = 1267.84 (NAVD 88)

Sta. 11+81.10, Water Line 7 =  
 B.L. Sta. 12+76.58, 14.98' Lt.  
 Remove Ex. Blowoff Assy. and  
 Connect to Ex. 8" Pipe.\*

Sta. 12+42.10, Water Line 7 =  
 B.L. Sta. 13+37.58, 14.97' Lt.  
 Remove Ex. 4" DI CL Pipe and  
 Fittings.  
 Connect to Ex. 8" Pipe.\*

Sta. 16+00.00, Water Line 7 =  
 B.L. Sta. 16+95.48, 14.97' Lt.  
 Install 1-Fire Hydrant Assy. (W)  
 L = 4.00'  
 Bury Line Elev. = 1268.6  
 Valve Box Elev. = 1268.4  
 Match Point

SCALE:  
 HORIZONTAL: 1" = 20'  
 VERTICAL: 1" = 5'



\* The 8" Water Line between Sta. 11+81.10 and Sta. 12+42.10 was installed with Phase 1 of the Oaklawn Water Main Replacement Project.

Brookhaven B.L. Sta. 13+06.96 =  
 Oaklawn B.L. Sta. 6+99.92



Water Line 7

